

STONE FILL, TYPE I
 STA. 328+53 - STA. 328+67 LT
 STA. 328+59 - STA. 328+90 RT

STONE FILL, TYPE II
 STA. 330+00 - STA. 331+50 LT

GRUBBING MATERIAL (12")
 STA. 330+00 - STA. 331+50 LT

GRUBBING MATERIAL (6")
 STA. 328+59 - STA. 328+90 RT

DURABLE 4 INCH WHITE LINE (SEE OPTION ITEMS)
 STA. 328+25 - STA. 333+00 (SOLID LT & RT)

DURABLE 4 INCH YELLOW LINE (SEE OPTION ITEMS)
 STA. 328+25 - STA. 333+00 (SOLID LT & RT)

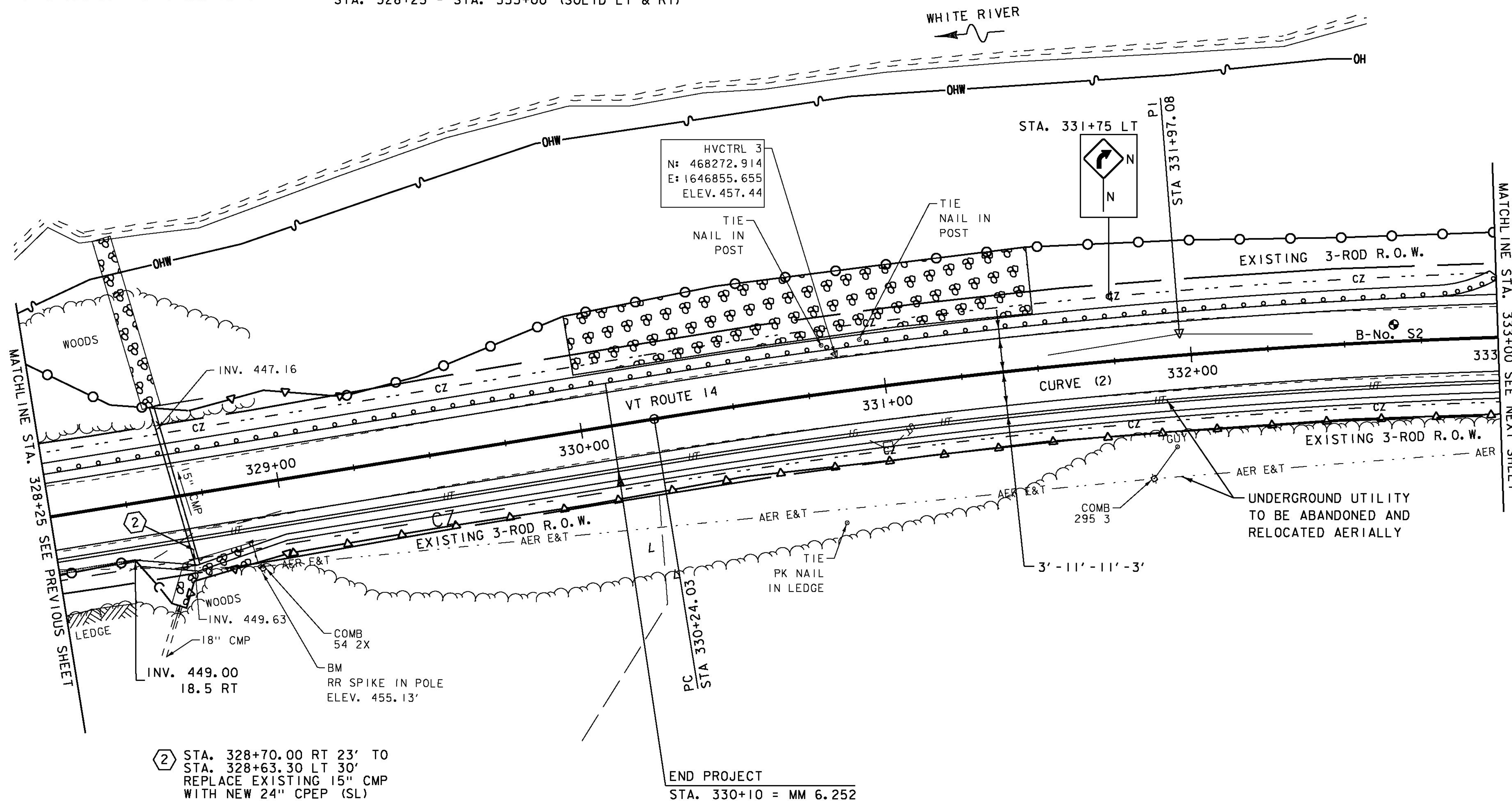
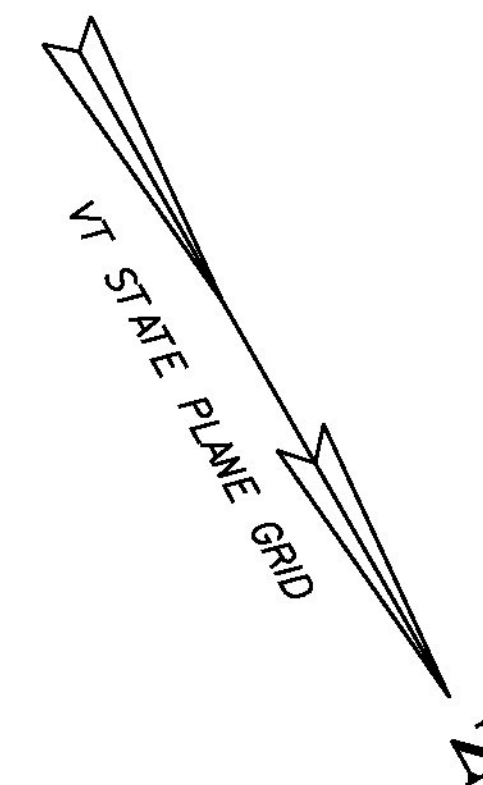
TEMPORARY 4 INCH WHITE LINE, PAINT
 STA. 328+25 - STA. 333+00 (SOLID LT & RT)

TEMPORARY 4 INCH YELLOW LINE, PAINT
 STA. 328+25 - STA. 333+00 (SOLID LT & RT)

REMOVE AND RESET GUARDRAIL
 STA. 328+25 - STA. 333+00 LT

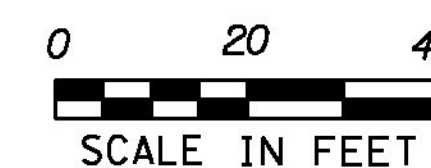
ANCHOR FOR STEEL BEAM RAIL
 STA. 333+00 LT

6 INCH UNDERDRAIN PIPE
 STA. 328+25 - STA. 328+50 RT



② STA. 328+70.00 RT 23' TO
 STA. 328+63.30 LT 30'
 REPLACE EXISTING 15" CMP
 WITH NEW 24" CPEP (SL)
 LENGTH = 54'-0"
 INV. IN = 449.93'
 INV. OUT = 446.77'
 ASKEW ANGLE = 82.9° RT
 CONSTRUCT INLET/OUTLET PROTECTION PADS
 STONE FILL, TYPE I

CURVE (2)
 DELTA = 9° 12' 13"
 D = 2° 39' 54"
 R = 2150.00'
 T = 173.05'
 L = 345.36'
 E = 6.95'
 BANKING = 0.049 FT/FT AT 50 MPH



PROJECT NAME: SHARON
 PROJECT NUMBER: ER STP 0147 (20)

FILE NAME: z12c410bdr.dgn
 PROJECT LEADER: J. TUCKER
 DESIGNED BY: B. BRESLEND
 PLAN SHEET 2

PLOT DATE: 3/31/2015
 DRAWN BY: B. MACK
 CHECKED BY: J. TUCKER
 SHEET 27 OF 66