

BEGIN PROJECT STP 0147 (20)
 STA. 322+50.00 = MM 6.108
BEGIN R.O.W. PROJECT
STP 0147 (20)
STA. 322+91.88
24.75' LT.

STONE FILL, TYPE I
 STA. 326+67 - STA. 327+01 RT

STONE FILL, TYPE II
 STA. 323+50 - STA. 327+50 LT
 STA. 325+75 - STA. 326+16 RT

STONE FILL, TYPE IV
 STA. 323+50 - STA. 328+00 LT

GRUBBING MATERIAL (12")
 STA. 323+50 - STA. 328+00 LT

GRUBBING MATERIAL (6")
 STA. 326+67 - STA. 327+01 RT
 STA. 325+75 - STA. 326+16 RT

TEMPORARY 4 INCH WHITE LINE, PAINT
 STA. 323+00 - STA. 328+25 (SOLID LT & RT)

TEMPORARY 4 INCH YELLOW LINE, PAINT
 STA. 323+00 - STA. 328+25 (SOLID LT & RT)

DURABLE 4 INCH WHITE LINE (SEE OPTION ITEMS)
 STA. 323+00 - STA. 328+25 (SOLID LT & RT)

DURABLE 4 INCH YELLOW LINE (SEE OPTION ITEMS)
 STA. 323+00 - STA. 328+25 (SOLID LT & RT)

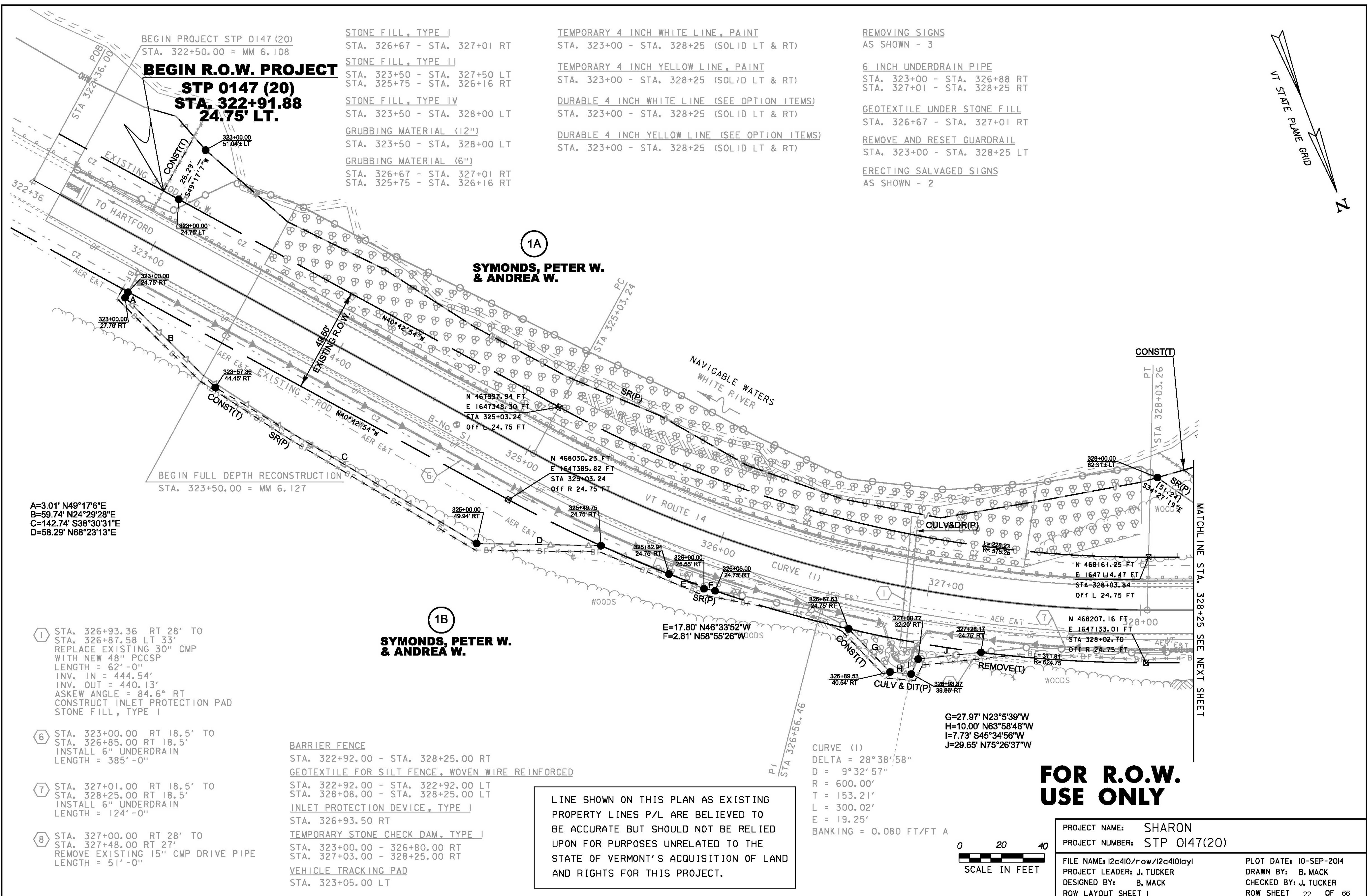
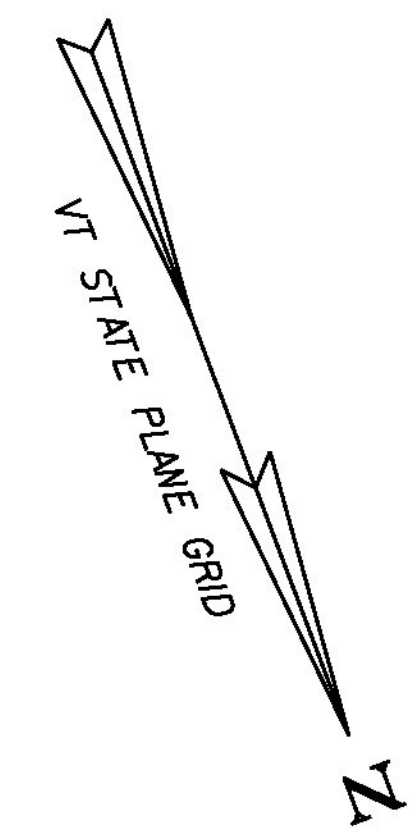
REMOVING SIGNS
 AS SHOWN - 3

6 INCH UNDERDRAIN PIPE
 STA. 323+00 - STA. 326+88 RT
 STA. 327+01 - STA. 328+25 RT

GEOTEXTILE UNDER STONE FILL
 STA. 326+67 - STA. 327+01 RT

REMOVE AND RESET GUARDRAIL
 STA. 323+00 - STA. 328+25 LT

ERECTING SALVAGED SIGNS
 AS SHOWN - 2



A=3.01' N49°17'6"E
 B=59.74' N24°29'28"E
 C=142.74' S38°30'31"E
 D=58.29' N68°23'13"E

BEGIN FULL DEPTH RECONSTRUCTION
 STA. 323+50.00 = MM 6.127

1A
**SYMONDS, PETER W.
 & ANDREA W.**

1B
**SYMONDS, PETER W.
 & ANDREA W.**

1 STA. 326+93.36 RT 28' TO
 STA. 326+87.58 LT 33'
 REPLACE EXISTING 30" CMP
 WITH NEW 48" PCCSP
 LENGTH = 62'-0"
 INV. IN = 444.54'
 INV. OUT = 440.13'
 ASKEW ANGLE = 84.6° RT
 CONSTRUCT INLET PROTECTION PAD
 STONE FILL, TYPE I

6 STA. 323+00.00 RT 18.5' TO
 STA. 326+85.00 RT 18.5'
 INSTALL 6" UNDERDRAIN
 LENGTH = 385'-0"

7 STA. 327+01.00 RT 18.5' TO
 STA. 328+25.00 RT 18.5'
 INSTALL 6" UNDERDRAIN
 LENGTH = 124'-0"

8 STA. 327+00.00 RT 28' TO
 STA. 327+48.00 RT 27'
 REMOVE EXISTING 15" CMP DRIVE PIPE
 LENGTH = 51'-0"

BARRIER FENCE
 STA. 322+92.00 - STA. 328+25.00 RT

GEOTEXTILE FOR SILT FENCE, WOVEN WIRE REINFORCED
 STA. 322+92.00 - STA. 322+92.00 LT
 STA. 328+08.00 - STA. 328+25.00 LT

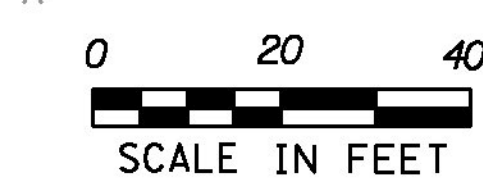
INLET PROTECTION DEVICE, TYPE I
 STA. 326+93.50 RT

TEMPORARY STONE CHECK DAM, TYPE I
 STA. 323+00.00 - 326+80.00 RT
 STA. 327+03.00 - 328+25.00 RT

VEHICLE TRACKING PAD
 STA. 323+05.00 LT

LINE SHOWN ON THIS PLAN AS EXISTING
 PROPERTY LINES P/L ARE BELIEVED TO
 BE ACCURATE BUT SHOULD NOT BE RELIED
 UPON FOR PURPOSES UNRELATED TO THE
 STATE OF VERMONT'S ACQUISITION OF LAND
 AND RIGHTS FOR THIS PROJECT.

CURVE (1)
 DELTA = 28°38'58"
 D = 9°32'57"
 R = 600.00'
 T = 153.21'
 L = 300.02'
 E = 19.25'
 BANKING = 0.080 FT/FT A



**FOR R.O.W.
 USE ONLY**

PROJECT NAME: SHARON	PROJECT NUMBER: STP 0147(20)
FILE NAME: I2c410/row/I2c410lay1	PLOT DATE: 10-SEP-2014
PROJECT LEADER: J. TUCKER	DRAWN BY: B. MACK
DESIGNED BY: B. MACK	CHECKED BY: J. TUCKER
ROW LAYOUT SHEET I	ROW SHEET 22 OF 66