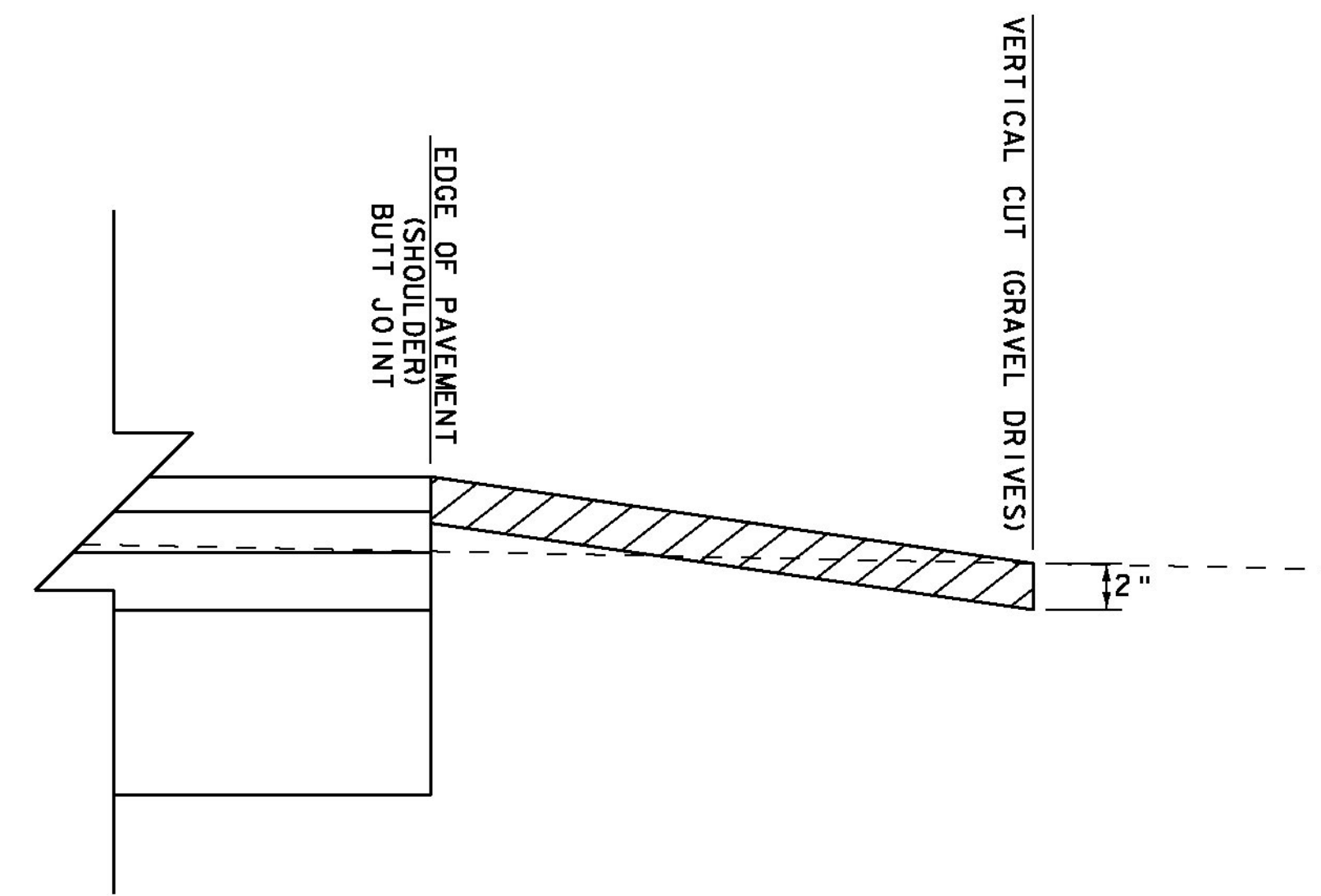
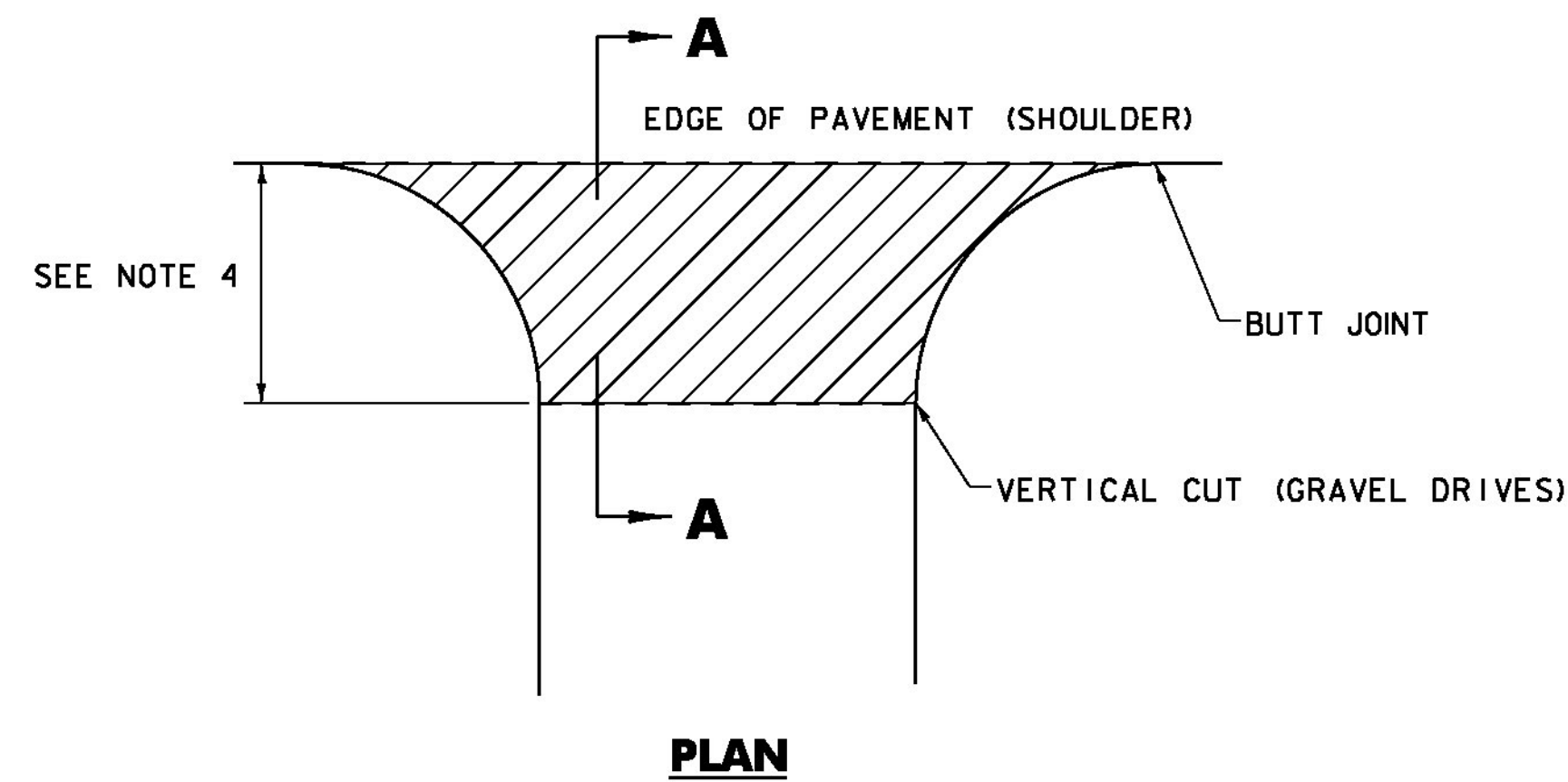


STATION	POSITION	TYPE	QUANTITY (SY)
SHARON			
333+26	LT	FIELD	9.8
333+56	RT	GRAVEL	37.1
342+58	RT	GRAVEL	12.2
		SUBTOTAL =	59.1
		ROUNDING =	0.9
		TOTAL =	60.0



HANDWORK DETAILS FOR DRIVES - GRAVEL DRIVES

NOTES:

- PAVING LIFT NOT TO EXCEED 2 INCHES.
- THE COST OF PLACING SUBBASE MATERIAL, CLEANING EXISTING PAVED SURFACES, INCLUDING POWER EQUIPMENT, AND FOR FILLING JOINTS, CRACKS AND HOLES WILL NOT BE PAID DIRECTLY BUT WILL BE CONSIDERED INCIDENTAL TO ITEM 900.675 "SPECIAL PROVISION (HAND-PLACED BITUMINOUS CONCRETE MATERIAL, DRIVES)".
- EXCAVATION OR FILL NEEDED TO ACHIEVE PROPER DRIVE SLOPES WILL NOT BE PAID DIRECTLY BUT WILL BE CONSIDERED INCIDENTAL TO ITEM 900.675 "SPECIAL PROVISION (HAND-PLACED BITUMINOUS CONCRETE MATERIAL, DRIVES)".
- FIELD DRIVES 2'-0"; RESIDENTIAL AND COMMERCIAL DRIVES 4'-0"; OR AS DIRECTED BY THE ENGINEER.

LEGEND



ITEM 900.675 "SPECIAL PROVISION (HAND-PLACED BITUMINOUS CONCRETE MATERIAL, DRIVES)"

DETAILS ARE NOT TO SCALE

PROJECT NAME: SHARON	
PROJECT NUMBER: ER STP 0147 (20)	
FILE NAME: z12c410.dgn	PLOT DATE: 3/31/2015
PROJECT LEADER: J. TUCKER	DRAWN BY: B. MACK
DESIGNED BY: B. BRESLEND	CHECKED BY: A. SANZ
HANDWORK DETAILS FOR DRIVES	SHEET 12 OF 66