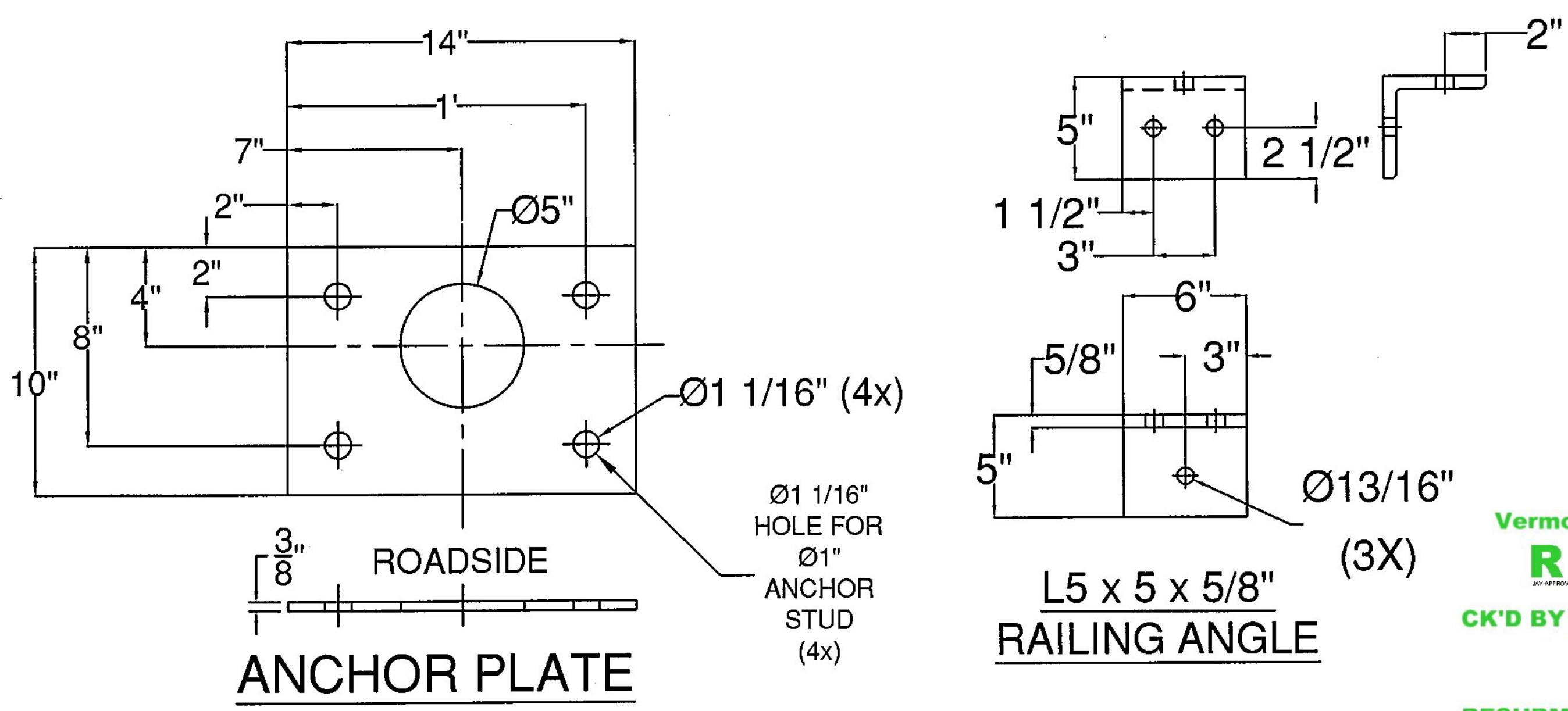


| ITEM # | QTY | PART # | DESCRIPTION | ASTM DESIGNATION |
|--------|-----|------------|-----------------------------------|------------------|
| 1 | 19 | 0033.03610 | W6x25, THREE RAIL POST @ 2'-9\"/> | |



APPROVED: Approval of drawings and/or procedures indicates concurrence with the information presented and does not relieve the Contractor or Fabricator of compliance with all specifications and code requirements.

APPROVED AS NOTED

REVISE AND RESUBMIT

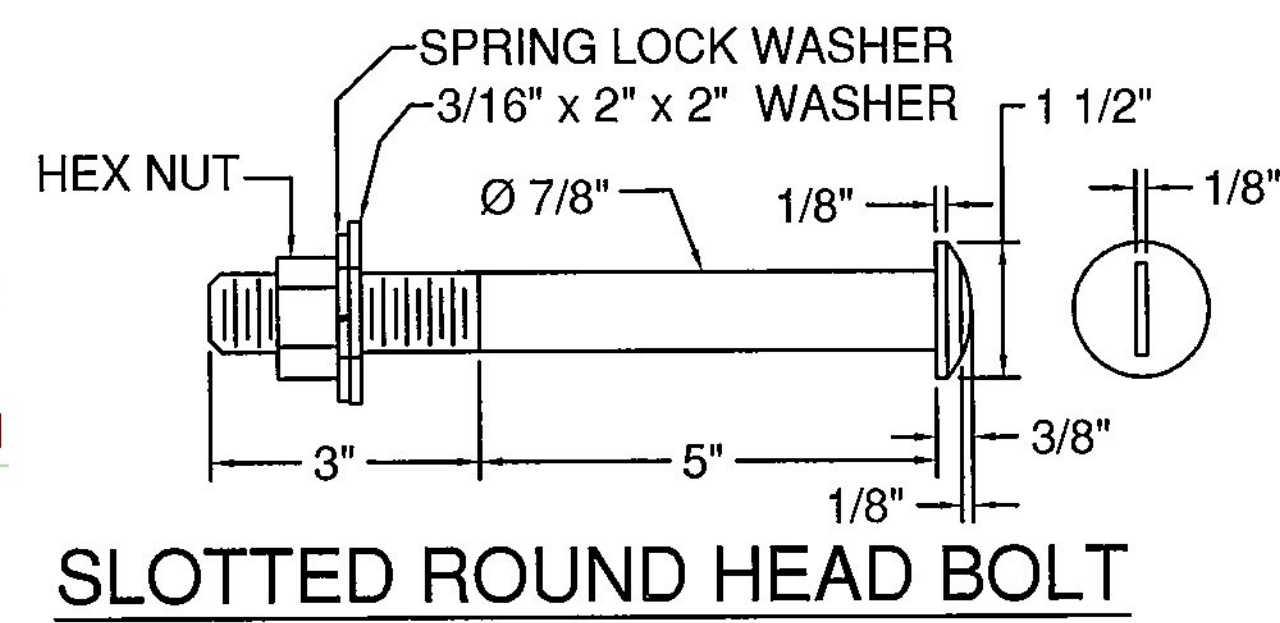
NOT REVIEWED

Date: 02/21/17

By: Michael J. Chenette

This review by Stantec Consulting Services Inc. is for the sole purpose of ascertaining conformance with the general design concept. This review shall not mean that Stantec Consulting Services Inc. approves the detail design inherent in the shop drawings, responsibility for which shall remain with the Contractor. Submitting same, and such review shall not relieve the Contractor of its responsibility for errors or omissions in the shop drawing or of its responsibility for meeting all requirements of the Contract Documents. The contractor is responsible for dimensions to be confirmed and correlated at the job site, for information that pertains solely to the fabrication processes or to techniques of construction and installation and for coordination of the work of all subtrades.

Stantec



| ITEM # | FUNCTION |
|--------|--|
| 20 | ANCHOR STUDS, (4) PER POST ON BASE (ITEM #1) |
| 21 | (2) PER ANCHOR STUD |
| 22 | (1) PER ANCHOR STUD |
| 23 | (1) PER ANCHOR STUD |
| 24 | BOLT TOP & BOTTOM RAIL TO PAST (ITEM #1), (4) PER POST |
| 25 | BOLT CENTER RAIL TO SHELF ANGLES (ITEM #21) |
| 26 | BOLT RAILING ANGLE (ITEM #21) TO POST (ITEM #1) |
| 27 | BOLT THRU RAILING & TUBE SPLICES (ITEM #9) |
| 28 | BOLT THRU RAILING & BAR SPLICES (ITEM #8) |

- GENERAL NOTES:
- 1) ALL RAILING IS TO BE FABRICATED AND ERECTED ACCORDING TO SECTION 525 OF THE STANDARD SPECIFICATIONS.
 - 2) PRIOR TO GALVANIZING THE ASSEMBLED POST, GRIND ALL EDGES TO A MINIMUM RADIUS OF 1/16\"/>

Vermont Agency of Transportation

RECEIVED

CK'D BY RFOSTER/CHENETTE OK'D BY WBP

February 15, 2017

RESUBMIT NO Approved AsNoted

BY WPELLETIER DATE 02/21/2017

ITEM #: 525.335

STRUCTURAL STEEL TO COMPLY W/ ASTM A6

TOLERANCE UNLESS OTHERWISE NOTED:

FRACTIONS = ± 1/16\"/>

SHEET 1 OF 3

BRIDGE RAIL DETAILS SHEET

VT ROUTE 242 (RURAL MAJOR COLLECTOR) BRIDGE # 10

TOWN OF JAY, COUNTY OF ORLEANS, VT.

| R NO. | DATE | DESCRIPTION | BY | R NO. | DATE | DESCRIPTION | BY |
|-------|--------|-----------------------------|------|-------|------|-------------|----|
| E 1 | 2/8/17 | REVISED PER 12/22/17 MARKUP | D.K. | E | | | |

ELDERLEE, INC.

OAKS CORNERS, NEW YORK 14518

email: dlong@elderlee.com / epeek@elderlee.com

Tel: 315-789-6670 Fax: 315-789-6615

CERTIFIED FABRICATOR

ORTHOGONOGRAPHIC PROJECTION

DRAWN D.K. 12/7/16

CHECKED E.P. 12/7/16

APPROVED D.L. 12/9/16

SCALE SCHEMATIC

DRAWING NO. F.R. LAFAYETTE-JAY