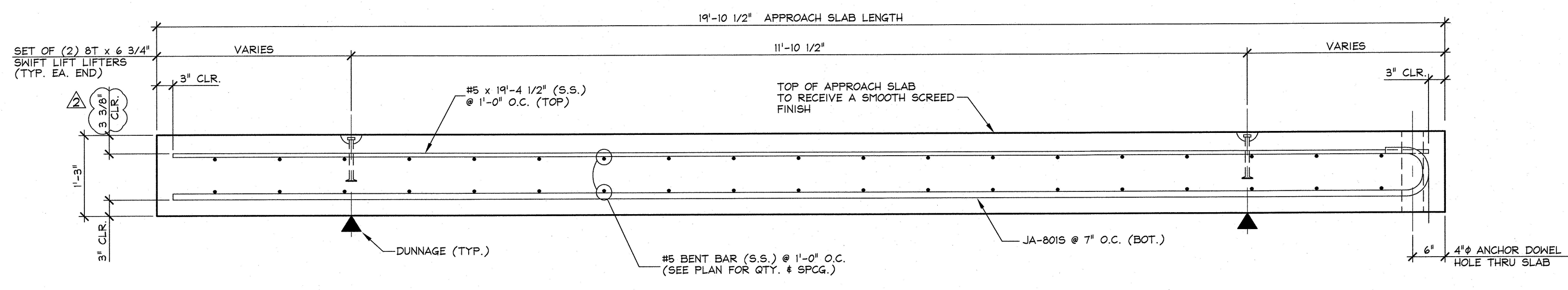
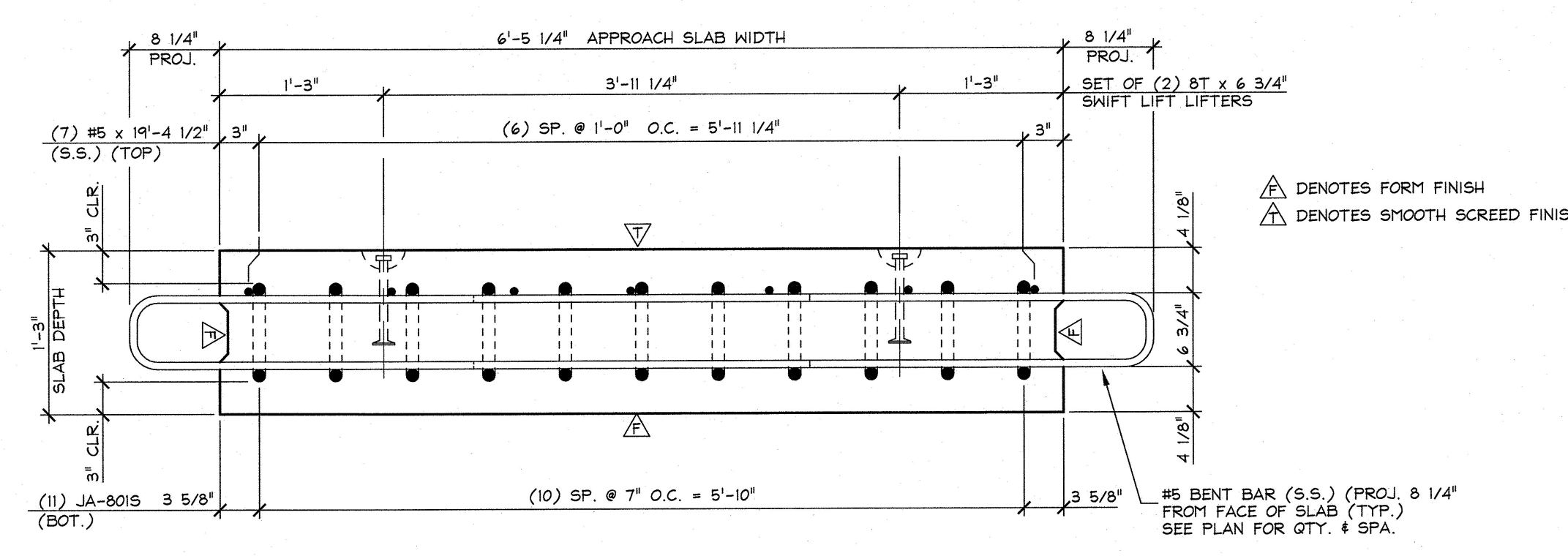


**1 PLAN VIEW IN FORM**  
 AS3  
 3/8" = 1'-0"

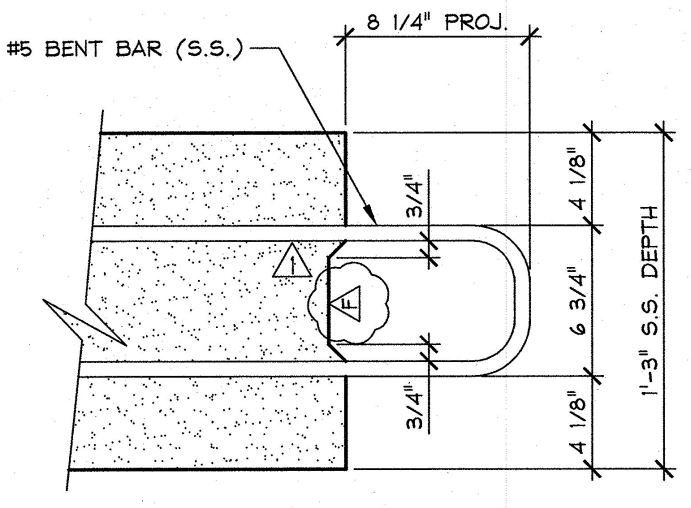
SHOP NOTE: ADJUST REINF. TO CLEAR ANCHOR DOVEL HOLES



**A LONGITUDINAL SECTION**  
 AS3  
 3/4" = 1'-0"



**B SECTION**  
 AS3  
 1" = 1'-0"



**SHEAR KEY DETAIL**  
 1/2" = 1'-0"

APPROVED: Approval of drawings and/or procedures indicates concurrence with the information presented and does not relieve the Contractor or Fabricator of compliance with all specifications and code requirements  
 APPROVED AS NOTED  
 REVISE AND RESUBMIT  
 NOT REVIEWED  
 Date: 12/12/16  
 By: Michael J. Chenette  
 This review by Stantec Consulting Services Inc. is for the sole purpose of ascertaining conformance with the general design concept. This review shall not mean that Stantec Consulting Services Inc. approves the detail design inherent in the shop drawings, responsibility for which shall remain with the Contractor. Submitting same, and such review shall not relieve the Contractor of his responsibility for errors or omissions in the shop drawing or of his responsibility for meeting all requirements of the Contract Documents. The contractor is responsible for dimensions to be confirmed and correlated at the job site, for information that pertains solely to the fabrication processes or to techniques of construction and installation and for coordination of the work of all trades.



SUBMITTED

DEC 6 2016

J.P. CARRARA & SONS, INC.  
 MIDDLEBURY, VT 05753

SHOP NOTE:  
 f'c = 5,000 PSI  
 f'ci = 3,000 PSI  
 MIX #445MSCC

MATERIAL LIST / APPROACH SLAB			
ITEM	MARK	DESCRIPTION	QTY.
1	JA-5075	#5 BENT BAR (STAINLESS STEEL)	30
2	JA-5085	#5 BENT BAR (STAINLESS STEEL)	4
3	JA-5095	#5 BENT BAR (STAINLESS STEEL)	2
4	JA-5105	#5 BENT BAR (STAINLESS STEEL)	2
5			
6			
7	JA-8015	#8 BENT BAR (STAINLESS STEEL)	11
8			
9		#5 x 19'-4 1/2' (STAINLESS STEEL)	7
10		#5 x 6'-4' (STAINLESS STEEL)	2
11			
12			
13			
14		DAYTON BT x 6 3/4" SWIFT LIFT (DOMESTIC)	4
15			

APPROVAL STAMP:

**J.P. CARRARA & SONS INC.**  
 Precast & Prestress Manufacturer  
 2464 CASE ST., MIDDLEBURY, VERMONT 05753 Phone: (802)388-6361 Fax: (802)388-9010

**A.L. St. Onge**  
 CONTRACTOR  
 MONTGOMERY, VERMONT

STATE OF VERMONT AGENCY OF TRANSPORTATION  
 COUNTY OF ORLEANS

TOWN OF JAY  
 VT. RTE 242, RURAL MAJOR COLLECTOR  
 BRIDGE NO.: 10 PROJECT NO.: BHF 0278 (3)

DATE: OCT. 14, 2016  
 SCALE: NOTED  
 CHKD: DFTM: T.D.  
 JOB NO: 23500-016  
 DWG. NO: AS3

12/6/16 REVISED AS PER ENGINEERS COM. T.D.  
 11/21/16 REVISED AS PER ENGINEERS COM. T.D.