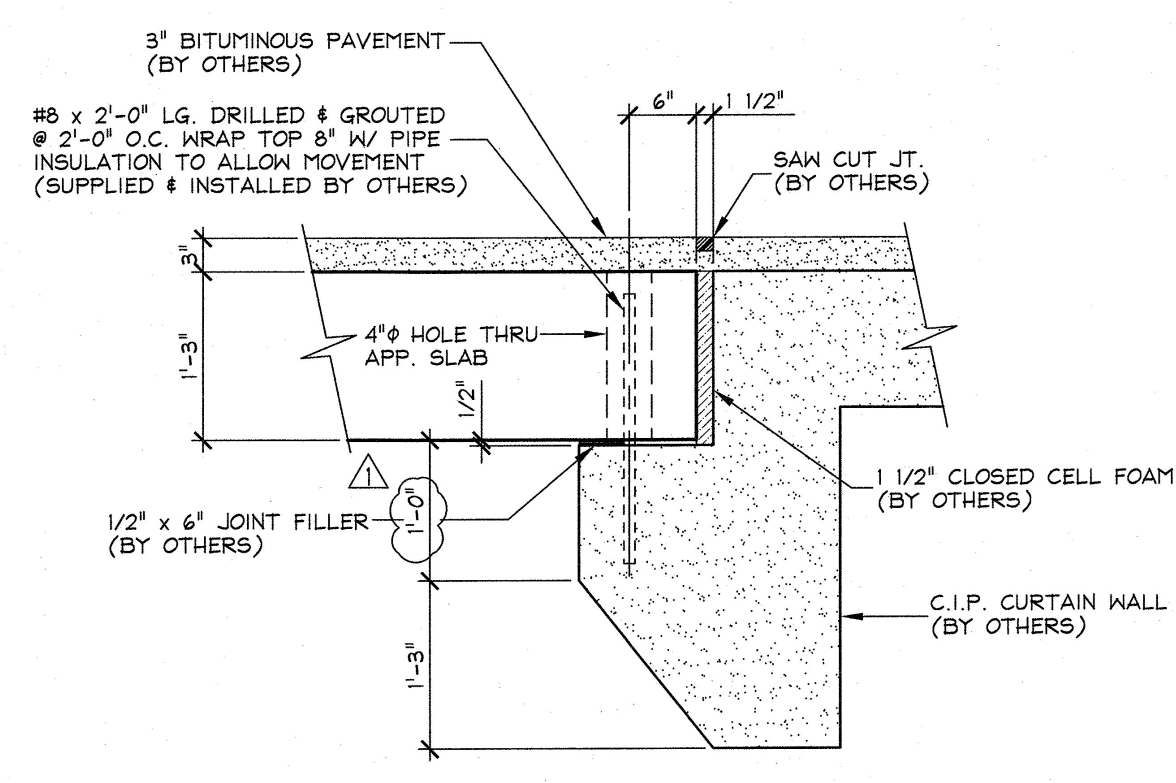
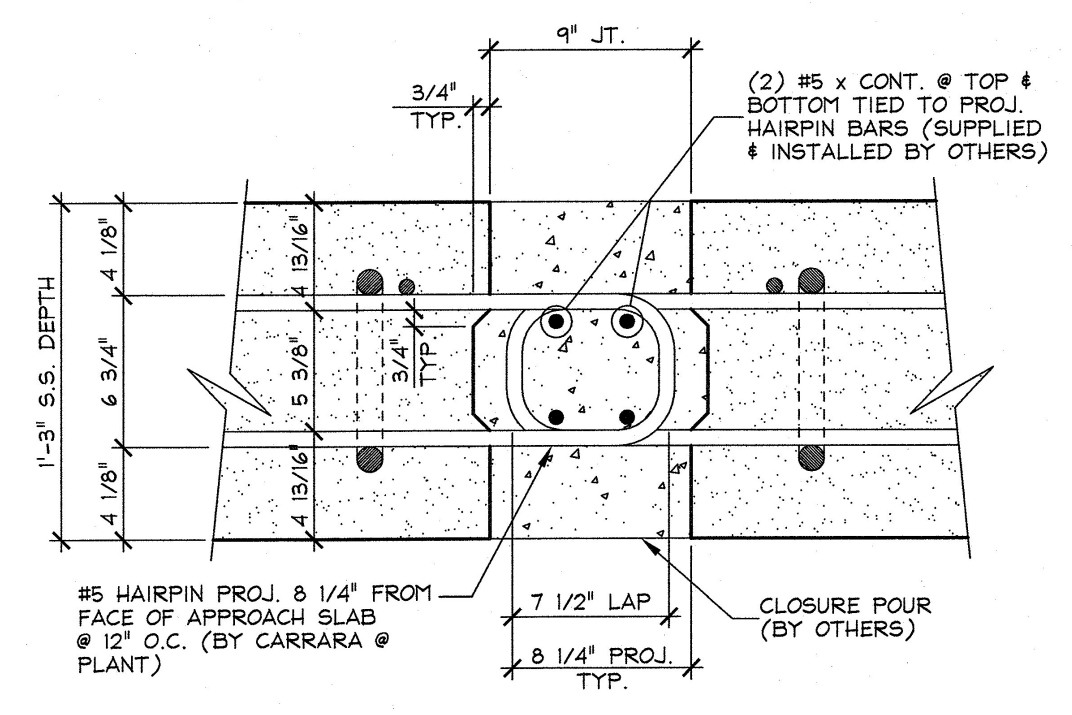


A APPROACH SLAB NO. 1 PLAN LAYOUT
 F1 3/8" = 1'-0"

B APPROACH SLAB NO. 2 PLAN LAYOUT
 F1 3/8" = 1'-0"



1 APPROACH SLAB BEARING DETAIL
 F1 3/4" = 1'-0"



2 APPROACH SLAB CLOSURE POUR
 F1 1 1/2" = 1'-0"

- APPROACH SLAB GENERAL NOTES**
- MIN. CONCRETE STRENGTH AT 28 DAYS SHALL BE 5,000 PSI.
 - MIN. CONCRETE STRENGTH FOR HANDLING SHALL BE 3,000 PSI (UNLESS NOTED OTHERWISE).
 - REINFORCING STEEL SHALL BE GR-620, ASTM A651 STAINLESS STEEL (2024 DUPLEX UNS-32304).
 - THE TOP OF APPROACH SLABS SHALL RECEIVE A SMOOTH SCREED FINISH (UNLESS NOTED OTHERWISE).
 - APPROACH SLABS SHALL BE HANDLED AND ERECTED USING THE LIFTING INSERTS ONLY. THE MINIMUM SLING ANGLE FROM THE HORIZONTAL SHALL BE 60°. APPROACH SLABS SHALL BE STORED & TRANSPORTED WITH TIMBER SUPPORTS AT 5th POINTS, UNLESS APPROVED BY J.P. CARRARA & SONS, INC.
 - MATERIAL SPECIFICATION AND MIX DESIGN SHALL CONFORM TO VERMONT SPEC. PS40.02 AND PS40.05 RESPECTIVELY.
 DESIGN BY: J.P.C. BRIDGE MIX #445MSC
 APPROVAL DATE: JUNE 6 2016
 - QUALITY CONTROL PROCEDURES ARE IN ACCORDANCE WITH PCI REQUIREMENTS. J.P. CARRARA & SONS, INC. IS A PCI CERTIFIED PLANT.
 - CURING METHOD: AS SOON AS THE TOP OF APPROACH SLABS ARE FINISHED, A COVER OF POLY WILL BE PLACED OVER THE APPROACH SLAB. NATURAL CURE WITH NO EXTERNAL HEAT APPLIED. UNITS SHALL NOT BE EXPOSED TO TEMPERATURE DIFFERENTIAL GREATER THAN 40°F. UNITS SHALL NOT BE EXPOSED TO TEMP < 36° UNTIL DESIGN STRENGTH IS ACHIEVED.
 - SHEAR KEY SURFACES SHALL BE FORM FINISH AS PER CONTRACT DRAWINGS.

APPROVED Approval of drawings and/or procedures indicates concurrence with the information presented and does not relieve the Contractor or specifier of compliance with all specifications and code requirements.	X
APPROVED AS NOTED	
REVISE AND RESUBMIT	
NOT REVIEWED	
Date: 12/12/16	
By: Michael J. Chenette	
<p>This review by Stantec Consulting Services Inc. is for the sole purpose of ascertaining conformance with the general design concept. This review shall not mean that Stantec Consulting Services Inc. approves the detail design inherent in the shop drawings, responsibility for which shall remain with the Contractor, Submitting same, and such review shall not release the Contractor of his responsibility for errors or omissions in the shop drawing or of his responsibility for meeting all requirements of the Contract Documents. The contractor is responsible for dimensions to be confirmed and correlated at the job site, for information that pertains solely to the fabrication processes or to techniques of construction and installation and for coordination of the work of all subtrades.</p>	

REVIEWED
 By Nick Van Den Berg (nick.vandenbergh@vermont.gov) at 8:30 pm, Dec 08, 2016

Vermont Agency of Transportation
RECEIVED
 CK'D BY WPELLETIER OK'D BY
 December 7, 2016
 RESUBMIT NO Accepted
 BY WPELLETIER DATE 12/7/2016

SUBMITTED
 DEC 6 2016
 J.P. CARRARA & SONS, INC.
 MIDDLEBURY, VT 05753

APPROVAL STAMP:	J.P. CARRARA & SONS INC. Precast & Prestress Manufacturer 2484 CASE ST., MIDDLEBURY, VERMONT 05753 Phone: (802)388-6361 Fax: (802)388-9010	A.L. St. Onge CONTRACTOR MONTGOMERY, VERMONT
STATE OF VERMONT AGENCY OF TRANSPORTATION COUNTY OF ORLEANS		DATE: OCT. 14, 2016 SCALE: NOTED
TOWN OF JAY VT. RTE 242, RURAL MAJOR COLLECTOR BRIDGE NO.: 10 PROJECT NO.: BHF 0278 (3)		CHKD: DFTM: T.D. JOB NO: 23500-016
APPROACH SLAB LAYOUT		DWG. NO: F1

12/6/16 REVISED AS PER ENGINEERS COM'N. T.D.
 11/21/16 REVISED AS PER ENGINEERS COM'N. T.D.