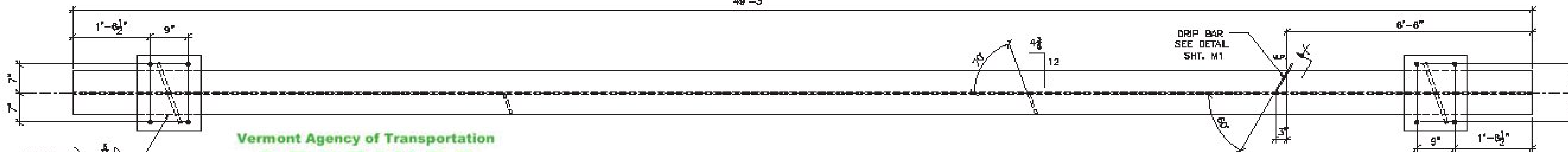
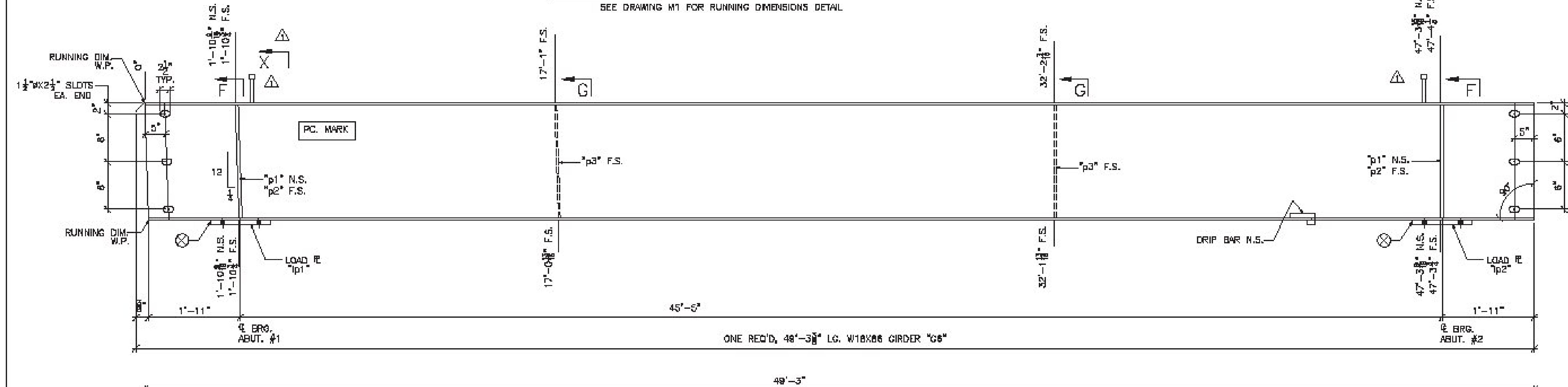
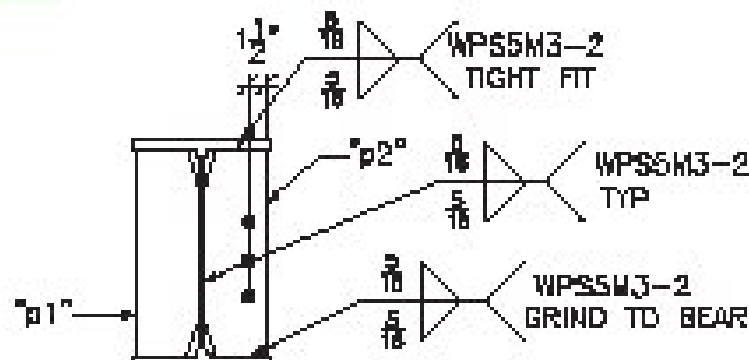


SHOP NOTE:
SEE DRAWING M1 FOR RUNNING DIMENSIONS DETAIL



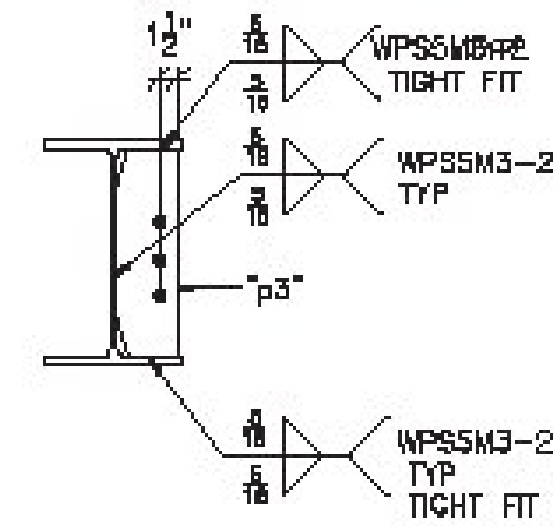
Vermont Agency of Transportation
RECEIVED
CK'D BY foster OK'D BY WBP
April 20, 2017
RESUBMIT NO Approved
BY WPELLETIER DATE 04/20/2017

BILL OF MATERIAL						
SHIP	SHIP MARK	NO. PCS.	PIECE MARK	DESCRIPTION	LENGTH	REMARKS
1	G6			GIRDER		4484
		1		W18X33	49'-3 3/8"	CVN 4238
		2	p1	SEE SHT. M1		
		2	p2	SEE SHT. M1		
		2	p3	SEE SHT. M1		
		1	dp1	3/4" THK. DRIP BAR SEE SHT. M1		
		1	lp1	1 1/4" LOAD PLATE SEE SHT. M1		
		1	lp2	1 1/4" LOAD PLATE SEE SHT. M1		
		122	st1	3/8" SHEAR STUDS	0'-7"	

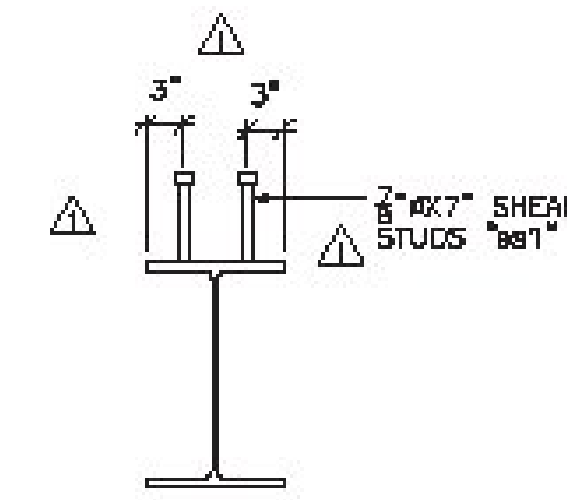


SECTION F

Stantec logo and disclaimer text.



SECTION G



SECTION X

SEE SHEET M1 FOR CAMBER AND SECTIONS & DETAILS NOT SHOWN

SHOP NOTE:
ENTIRE TOP FLANGE IS IN COMPRESSION
ENTIRE BOTTOM FLANGE IS IN TENSION

FINISH			
FINISH	GRAVELLED		
MATERIAL	ASHTO M220 (ASTM A709) 68.50 U.S. L. GAL.		
HOLES	10/18" U.S. L. GAL.		
ELECTRODES			
WELDS	PER AWS		
SURFACE PREP	SPFO SFS		
NO.	DATE	DESCRIPTION	BY
		4/18/17	ADDED SHEAR STUDS JWC
REVISIONS			
		ADVANCED RESOURCES & CONST. ENTERPRISES, INCORPORATED P.O. BOX 120 KINGFIELD, ME 04847 PHONE: (207) 866-2846 - FAX: (207) 263-1064	
DRAWN	JWC	STRINGER DETAILS, G6	PROJECT NO. 16-165
DATE	3/8/17	TOWN OF JAY, VT RTE 242 (RURAL MARKET COLLECTOR)	DWG. NO. 16-165
CHECKED	JS	PROJECT NUMBER BH7 0278(3)	
DATE	3/9/17	BY: AL ST. ONGE CONTRACTOR INC.	7