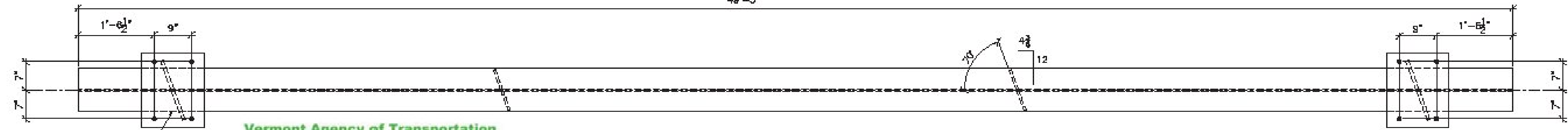
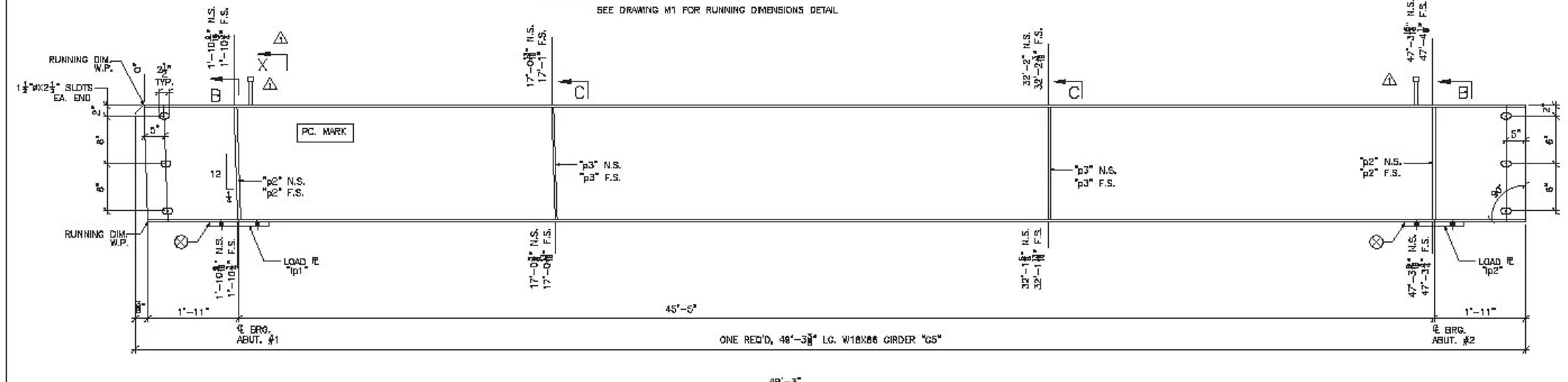
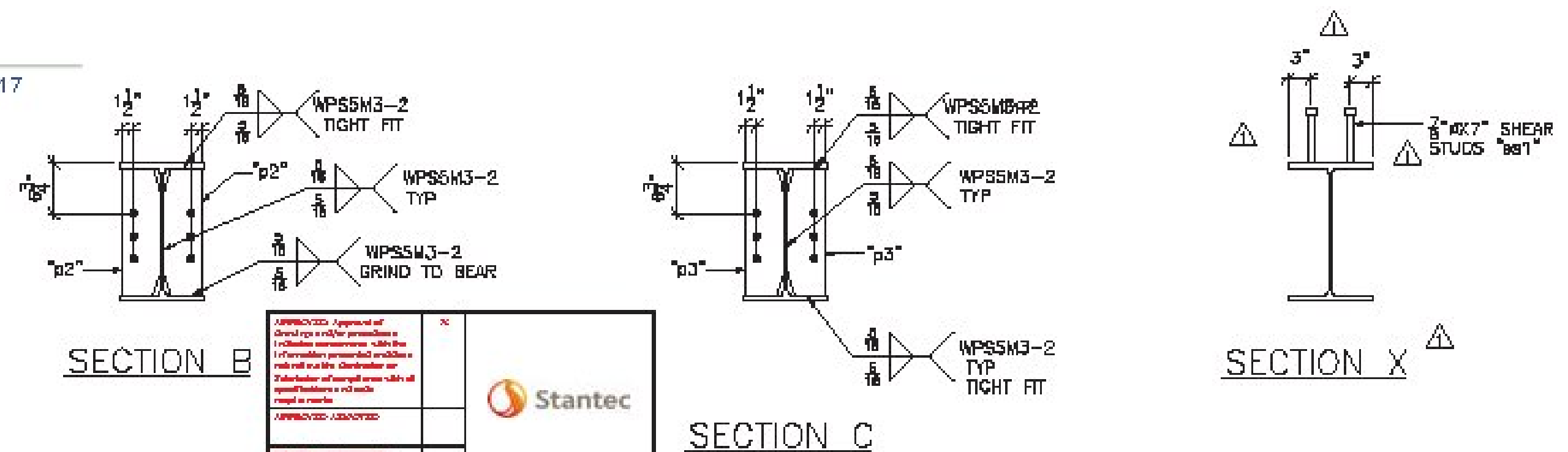


SHOP NOTE:
SEE DRAWING M1 FOR RUNNING DIMENSIONS DETAIL



Vermont Agency of Transportation
RECEIVED
CK'D BY rfooster OK'D BY WBP
April 20, 2017
RESUBMIT NO Approved
BY WPELLETIER DATE 04/20/2017

BILL OF MATERIAL							
SHIP	SHIP MARK	NO. PCS.	PIECE MARK	DESCRIPTION	LENGTH	REMARKS	WT.
1	G5			GIRDER			4896
		1		W18X88	49'-3 3/8"	CVN	4238
		4	p2	SEE SHIT. M1			
		4	p3	SEE SHIT. M1			
		1	lp1	1 1/2" LOAD PLATE SEE SHIT. M1			
		1	lp2	1 1/2" LOAD PLATE SEE SHIT. M1			
		122	st1	3/8" SHEAR STUDS	0'-7"		



APPROVED: Approved of design and/or construction
DESIGNED: Approved of design and/or construction
CHECKED: Approved of design and/or construction
DATE: 3/9/17

Stantec

SHOP NOTE:
ENTIRE TOP FLANGE IS IN COMPRESSION
ENTIRE BOTTOM FLANGE IS IN TENSION

NO.	DATE	DESCRIPTION	BY
1	4/18/17	ADDED SHEAR STUDS	JYC

ARC
ADVANCED RESOURCES & CONST. ENTERPRISES, INCORPORATED
P.O. BOX 120 KINGFIELD, ME 04847
PHONE: (207) 866-2848 - FAX: (207) 285-1064

DRYER JYC DATE 3/9/17 PROJECT NO. 16-165
CHECKED JS DATE 3/9/17 PROJECT NUMBER BH7 0278(3) DWG. NO. 6
AL ST. ONCE CONTRACTOR INC.

SEE SHEET M1 FOR CAMBER AND SECTIONS & DETAILS NOT SHOWN