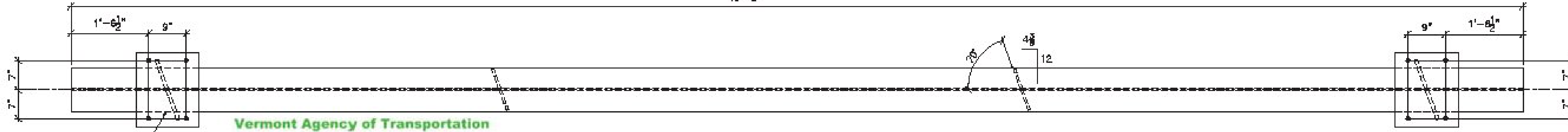
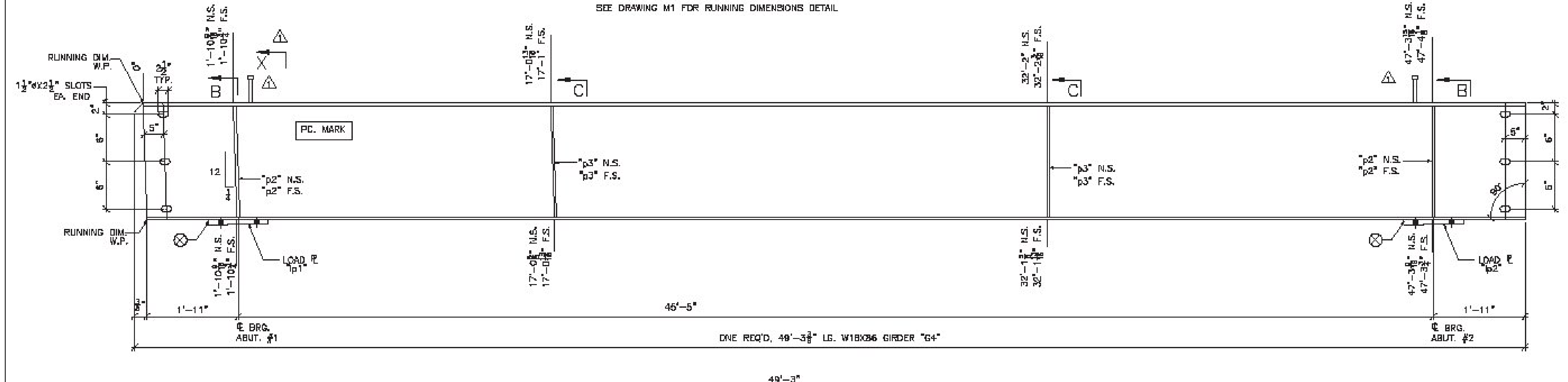


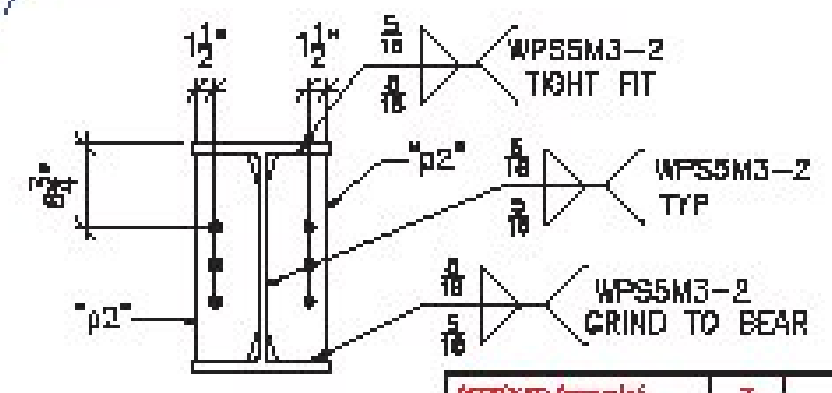
SHOP NOTE:
SEE DRAWING M1 FOR RUNNING DIMENSIONS DETAIL

TOP VIEW



Vermont Agency of Transportation
RECEIVED
CK'D BY foster OK'D BY WBP
April 20, 2017
RESUBMIT NO Approved
BY WPELLETIER DATE 04/20/2017

BILL OF MATERIAL							
SHIP	SHIP MARK	NO. POS.	PIECE MARK	DESCRIPTION	LENGTH	REMARKS	WT.
1	G4			GIRDER			4936
		1		W18X36	48'-3 3/8"	CVN	4236
		4	p2	SEE SHT. M1			
		4	p3	SEE SHT. M1			
		1	b1	1 1/2" LOAD PLATE SEE SHT. M1			
		1	b2	1 1/2" LOAD PLATE SEE SHT. M1			
		128	s1	3/8" SHEAR STUDS	0'-7"		



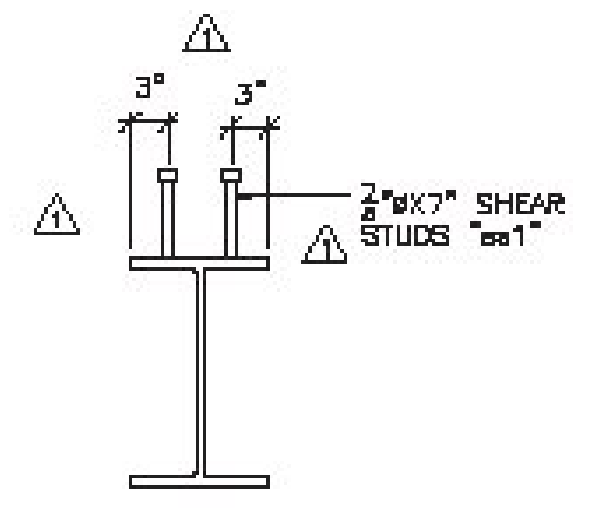
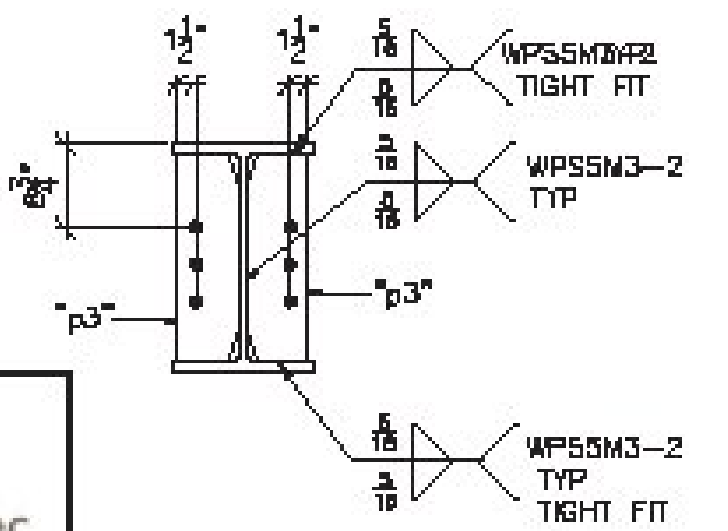
Stantec

APPROVED FOR CONSTRUCTION

DATE: 04/20/17

BY: Michael J. Givens

THIS REVIEW IS LIMITED TO THE TECHNICAL ASPECTS OF THE DRAWING AND DOES NOT CONSTITUTE A GUARANTEE OF THE ACCURACY OF THE INFORMATION PROVIDED. THE USER OF THIS DRAWING SHALL BE RESPONSIBLE FOR VERIFYING THE ACCURACY OF THE INFORMATION PROVIDED AND FOR OBTAINING NECESSARY PERMITS AND APPROVALS FROM THE APPROPRIATE AGENCIES.



SHOP NOTE:
ENTIRE TOP FLANGE IS IN COMPRESSION
ENTIRE BOT. FLANGE IS IN TENSION

FINISH	CHALKWASH			
MATERIAL	AASHTO M270 (ASTM A308) CP. 50 U.S.G.			
HOLES	15/16" U.S.G.			
ELECTRICITIES				
WELDS	PER AWS			
SURFACE PREP	SSPC SP6			

ARC
ADVANCED RESOURCES & CONST. ENTERPRISES, INCORPORATED
P.O. BOX 120 KENNELBROOK, MD 20887
PHONE: (301) 283-2646 - FAX: (301) 283-4089

PROJECT NO. 16-185
DWS. NO. 5

DATE: 3/8/17
CHECKED: JS
DATE: 3/8/17

STRINGER DETAILS, G4
TOWN OF JAY, VT RTE. 242 (RURAL WATER COLLECTOR)
PROJECT NUMBER BHP 0278(S)
AL ST. ONGE CONTRACTOR INC.

SEE SHEET M1 FOR GAMBER AND SECTIONS & DETAILS NOT SHOWN