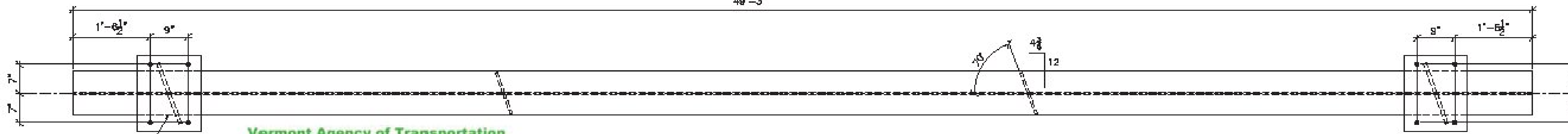
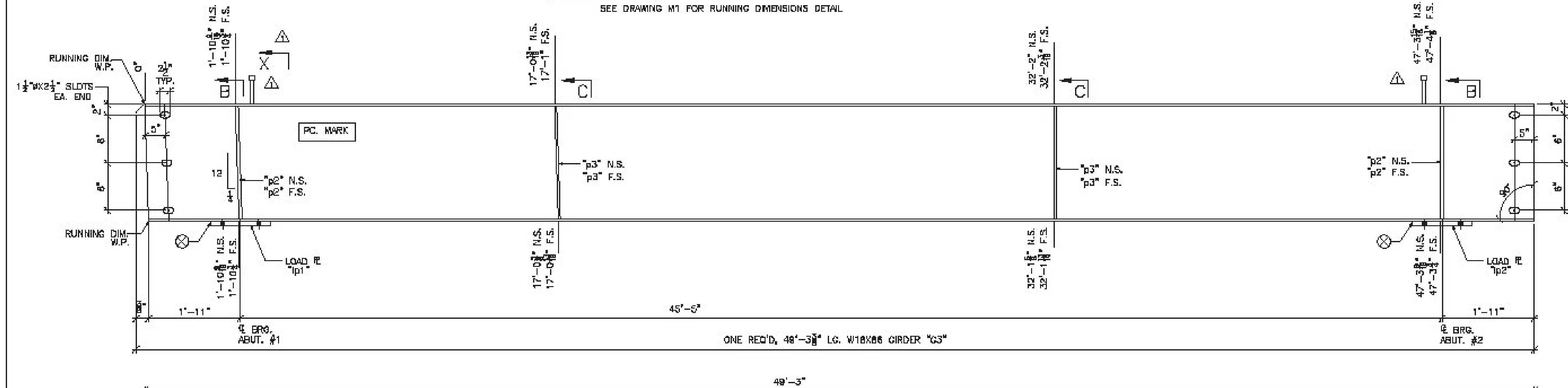
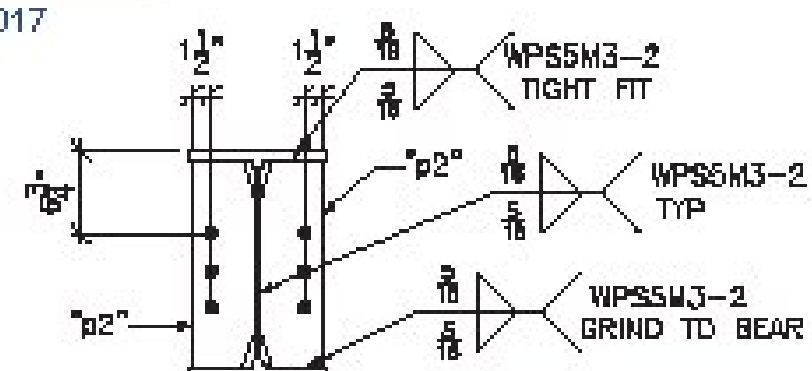


SHOP NOTE:
SEE DRAWING M1 FOR RUNNING DIMENSIONS DETAIL



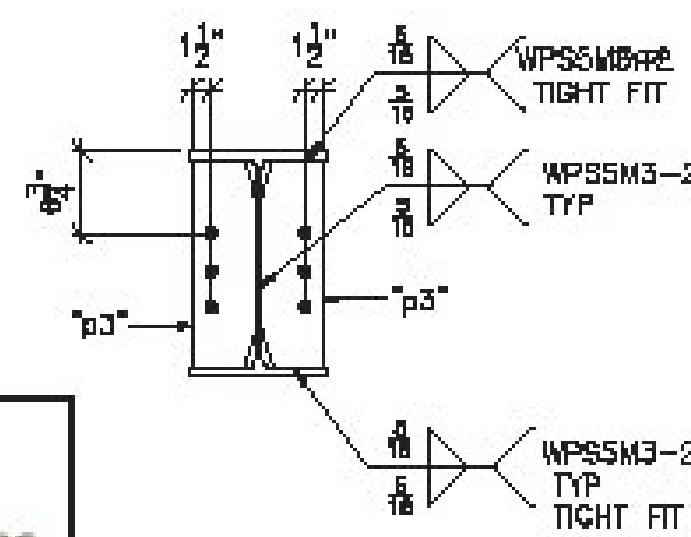
Vermont Agency of Transportation
RECEIVED
CK'D BY rfoster OK'D BY WBP
April 20, 2017
RESUBMIT NO Approved
BY WPELLETIER DATE 04/20/2017

| BILL OF MATERIAL | | | | | | | |
|------------------|-----------|----------|------------|-------------------------------|------------|---------|------|
| SHIP | SHIP MARK | NO. PCS. | PIECE MARK | DESCRIPTION | LENGTH | REMARKS | WT. |
| 1 | G3 | | | GIRDER | 49'-3 3/8" | CVN | 4238 |
| | | 1 | | W18X86 | | | 4238 |
| | | 4 | p2 | SEE SHT. M1 | | | |
| | | 4 | p3 | SEE SHT. M1 | | | |
| | | 1 | lp1 | 1 1/2" LOAD PLATE SEE SHT. M1 | | | |
| | | 1 | lp2 | 1 1/2" LOAD PLATE SEE SHT. M1 | | | |
| | | 122 | st1 | 3/8" SHEAR STUDS | 0'-7" | | |

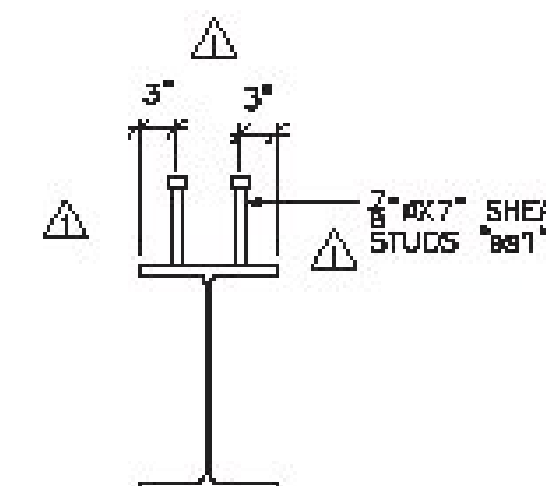


SECTION B

Stantec
Project: STRINGER DETAILS, G3
Date: 3/9/17



SECTION C



SECTION X

SEE SHEET M1 FOR CAMBER AND SECTIONS & DETAILS NOT SHOWN

SHOP NOTE:
ENTIRE TOP FLANGE IS IN COMPRESSION
ENTIRE BOTTOM FLANGE IS IN TENSION

| REVISIONS | | | |
|-----------|---------|-------------------|-----|
| NO. | DATE | DESCRIPTION | BY |
| 1 | 4/18/17 | ADDED SHEAR STUDS | JYC |

ARC
ADVANCED RESOURCES & CONST. ENTERPRISES, INCORPORATED
P.O. BOX 120 KINGFIELD, ME 04847
PHONE: (207) 866-2848 - FAX: (207) 263-1064

| | |
|--------------|--|
| DRAWN BY JYC | PROJECT NO. 16-165 |
| DATE 3/9/17 | TOWN OF JAY, VT RTE 242 (RURAL MARKET COLLECTOR) |
| CHECKED JS | PROJECT NUMBER BH7 0278(3) |
| DATE 3/9/17 | BY: AL ST. ONGE CONTRACTOR INC. |
| | DWG. NO. 4 |