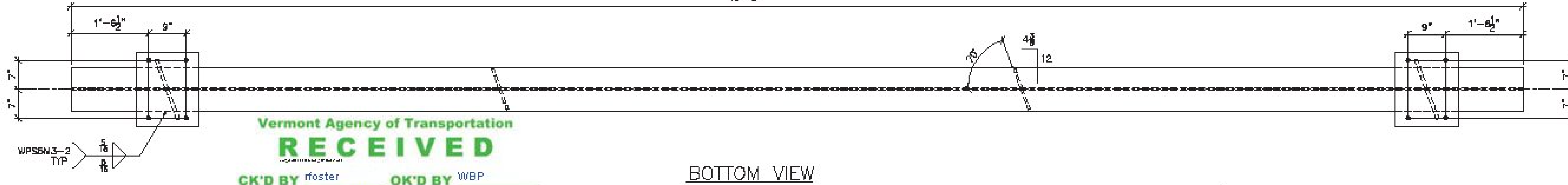
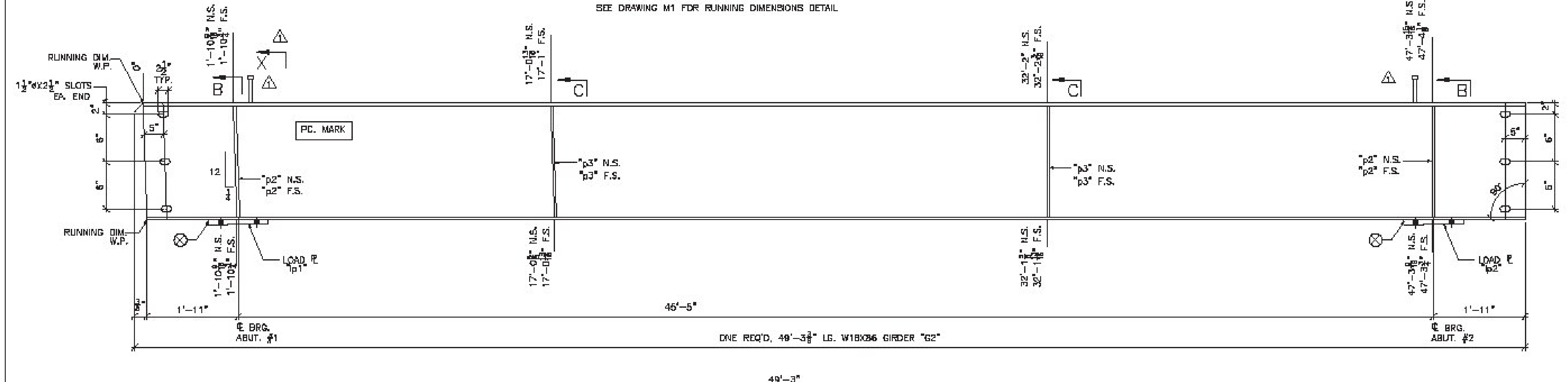
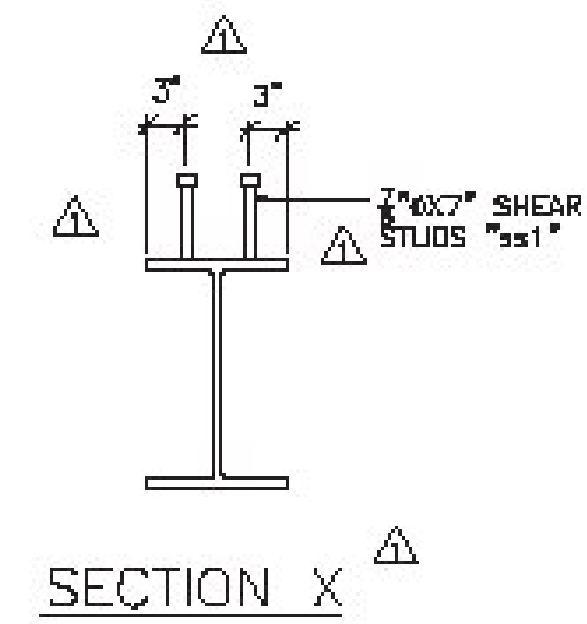
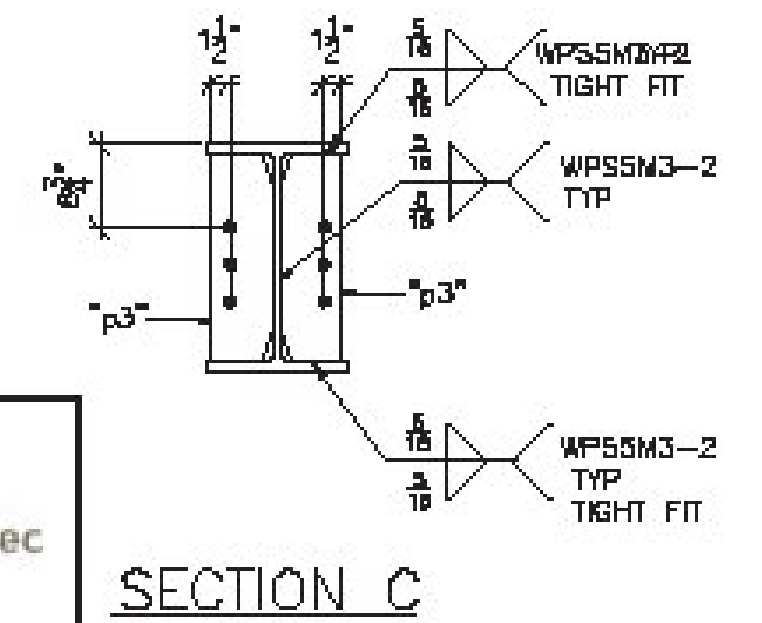
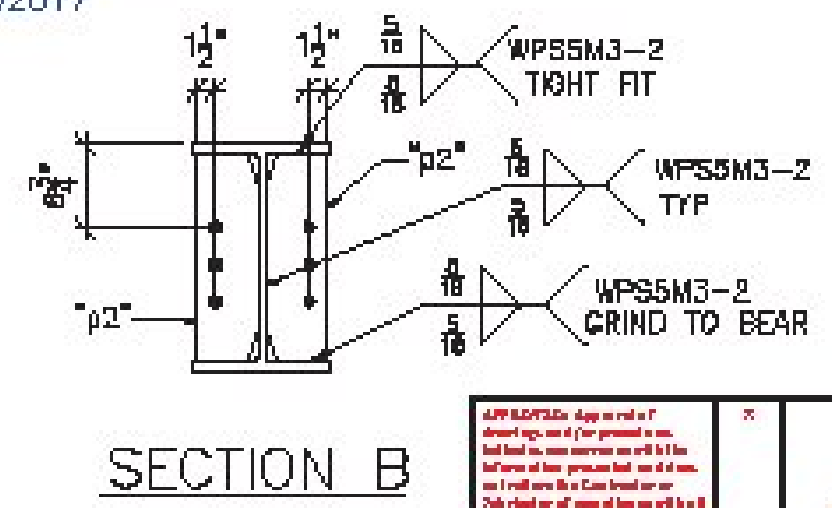


SHOP NOTE:
SEE DRAWING M1 FOR RUNNING DIMENSIONS DETAIL



Vermont Agency of Transportation
RECEIVED
CK'D BY foster OK'D BY WBP
April 20, 2017
RESUBMIT NO Approved
BY WPELLETIER DATE 04/20/2017

BILL OF MATERIAL							
SHIP	SHIP MARK	NO. POS.	PIECE MARK	DESCRIPTION	LENGTH	REMARKS	WT.
1	G2			GIRDER			4936
		1		WIRKAB	48'-3 3/8"	CVN	4236
		4	p2	SEE SHT. M1			
		4	p3	SEE SHT. M1			
		1	b1	1 1/2" LOAD PLATE SEE SHT. M1			
		1	b2	1 1/2" LOAD PLATE SEE SHT. M1			
		128	s1	5/8" SHEAR STUDS	0'-7"		



Stantec
APPROVED AS SHOWN
DATE 4/20/17
BY [Signature]

SHOP NOTE:
ENTIRE TOP FLANGE IS IN COMPRESSION
ENTIRE BOT. FLANGE IS IN TENSION

FINISH	CHALKWASH			
MATERIAL	AASHTO M270 (ASTM A308) CR. 50 U.S.G.			
HOLES	15/16" U.S.G.			
ELECTRICIENS				
WELDS	PER WPS			
SURFACE PREP	SSPC SP6			

ARC
ADVANCED RESOURCES & CONST. ENTERPRISES, INCORPORATED
P.O. BOX 120 KIMBELO, ME 04847
PHONE: (207) 263-2646 - FAX: (207) 263-4084

DESIGNER: JAC	PROJECT NO: 16-185
DATE: 3/8/17	TOWN OF JAY, VT RTE. 242 (RURAL WATER COLLECTOR)
CHECKED: JS	PROJECT NUMBER: BHP 0278(S)
DATE: 3/8/17	AL ST. ONGE CONTRACTOR INC.

SEE SHEET M1 FOR CAMBER AND SECTIONS & DETAILS NOT SHOWN