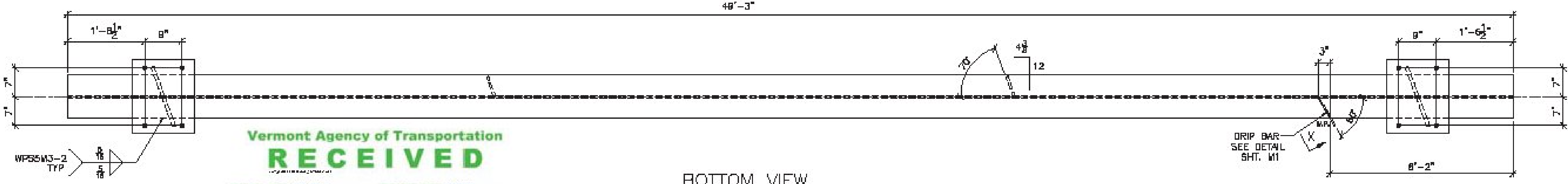
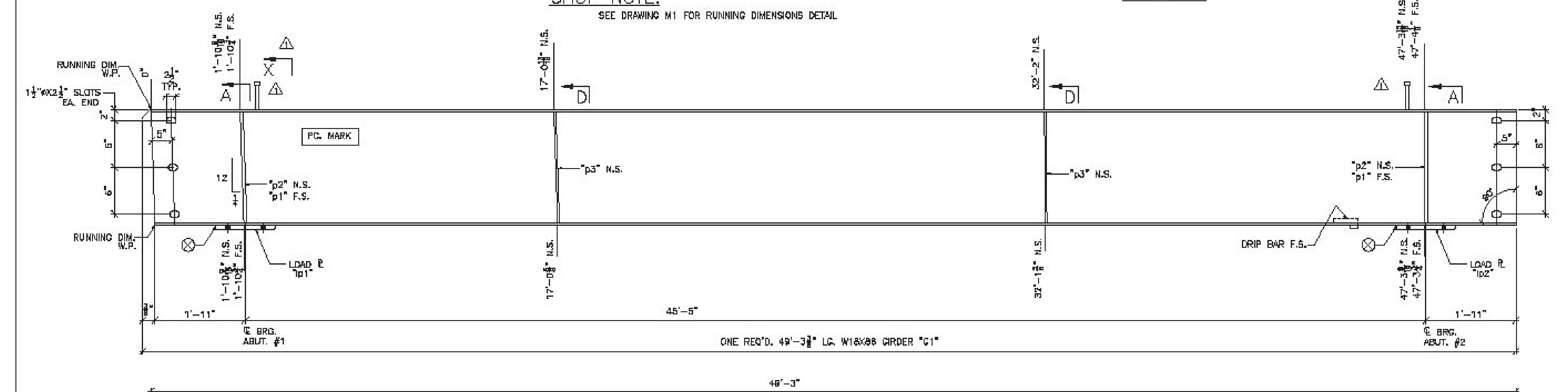
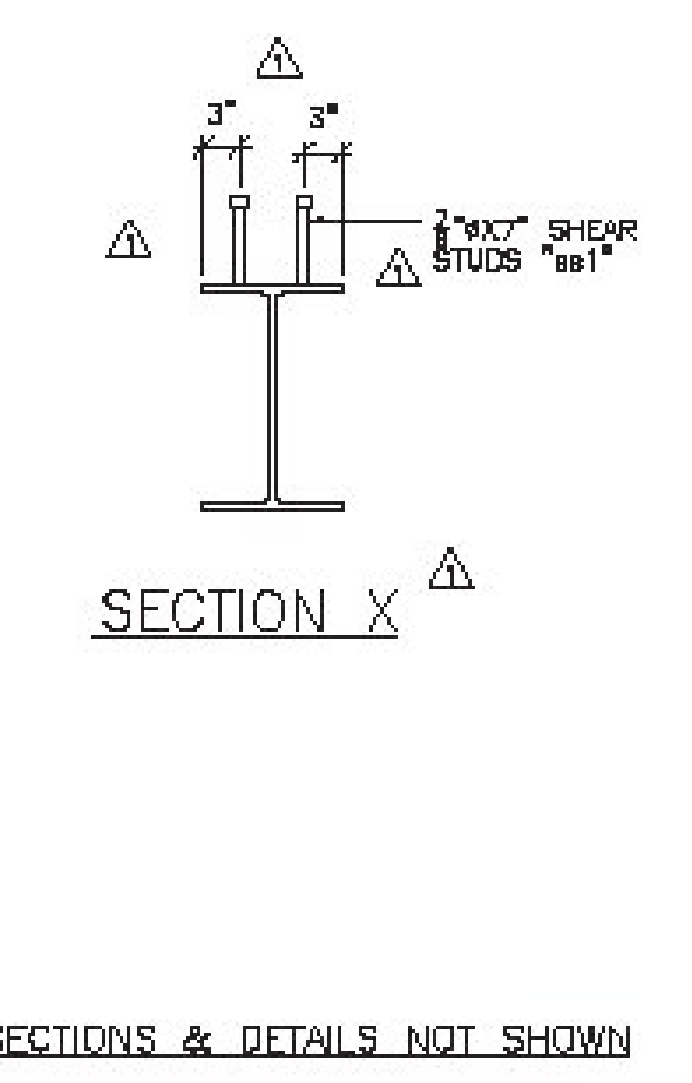
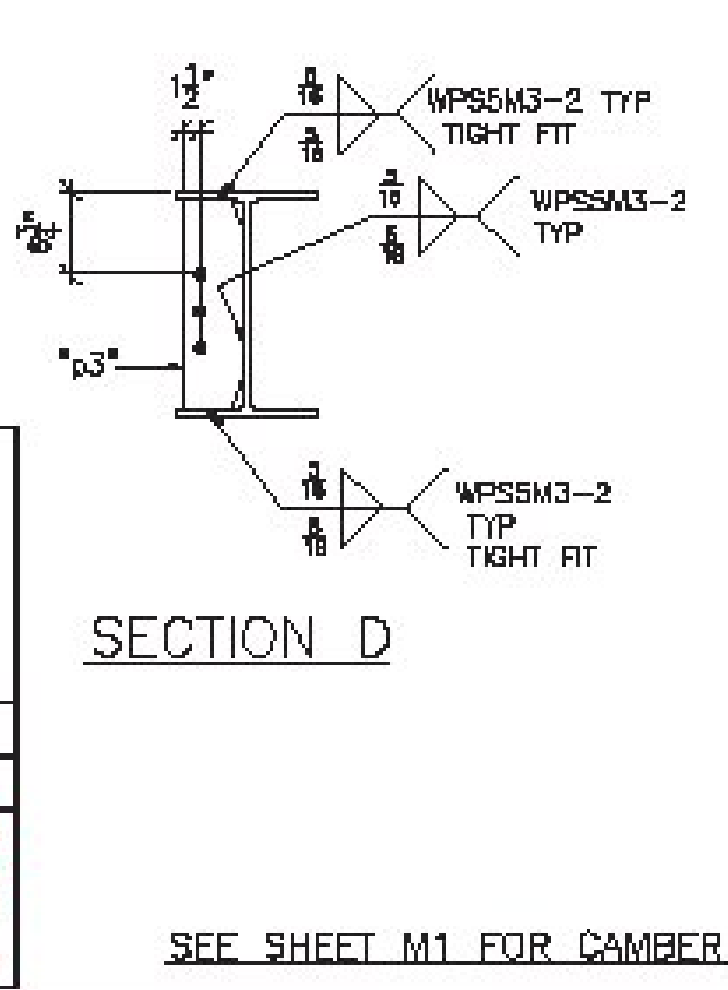
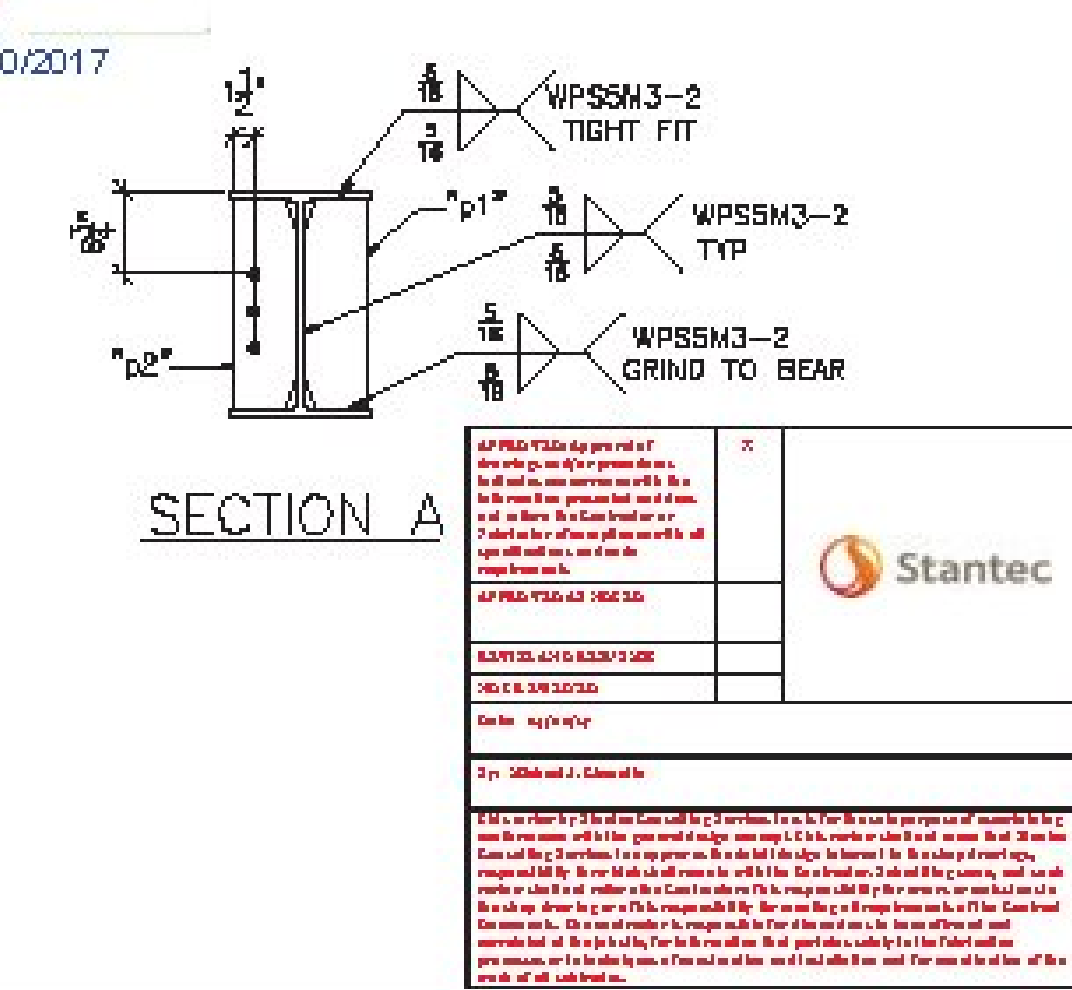


SHOP NOTE:  
SEE DRAWING M1 FOR RUNNING DIMENSIONS DETAIL



Vermont Agency of Transportation  
**RECEIVED**  
CK'D BY rfooster OK'D BY WBP  
April 20, 2017  
RESUBMIT NO Approved  
BY WPELLETIER DATE 04/20/2017

BILL OF MATERIAL							
SHIP MARK	SHIP MARK	NO. PCS.	PIECE MARK	DESCRIPTION	LENGTH	REMARKS	WT.
1	G1	1		GRIDER	48'-3 3/8"	CVN	4484
		2	p1	SEE SHT. M1			4230
		2	p2	SEE SHT. M1			
		2	p3	SEE SHT. M1			
		1	dp1	1/2" THK. DRIP BAR SEE SHT. M1			
		1	lp1	12" x 12" LOAD PLATE SEE SHT. M1			
		1	lp2	12" x 12" LOAD PLATE SEE SHT. M1			
		122	st1	3/8" SHEAR STUDS	D'-7		



SHOP NOTE:  
ENTIRE TOP FLANGE IS IN COMPRESSION  
ENTIRE BOTTOM FLANGE IS IN TENSION

FINISH	RAW/BLANK		
MATERIAL	A36/50 (ASTM A572) GR. 50 U.S.G.A.		
HOLE	15/16" U.S.G.		
ELECTRODES			
WELDS	PER WPS		
SURFACE PREP	SAFC SP6	4/18/17	ADDED SHEAR STUDS
		ND	DATE

REVISIONS

NO.	DATE	DESCRIPTION	BY

ARC  
ADVANCED RESOURCES & CONST. ENTERPRISES, INCORPORATED  
P.O. BOX 120 KENNESAW, NE 04047  
PHONE: (207) 265-2848 - FAX: (207) 265-4054

DRAWN	JWC	STRINGER DETAILS, G1	PROJECT NO.
DATE	3/8/17	TOWN OF ZEPH. VT. PTE. S&E (RURAL NAIDE COLLECTION)	16-165
CHECKED	JS	PROJECT NUMBER BHP 0274(3)	DWG. NO.
DATE	3/8/17	B/C AL ST. ONCE CONTRACTOR INC.	2

SEE SHEET M1 FOR CAMBER AND SECTIONS & DETAILS NOT SHOWN