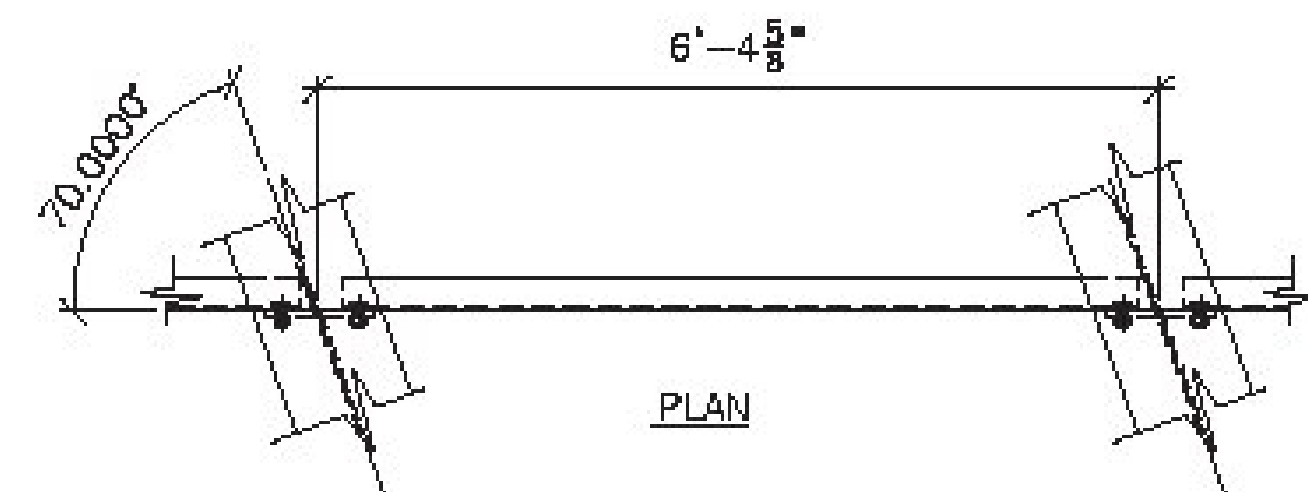
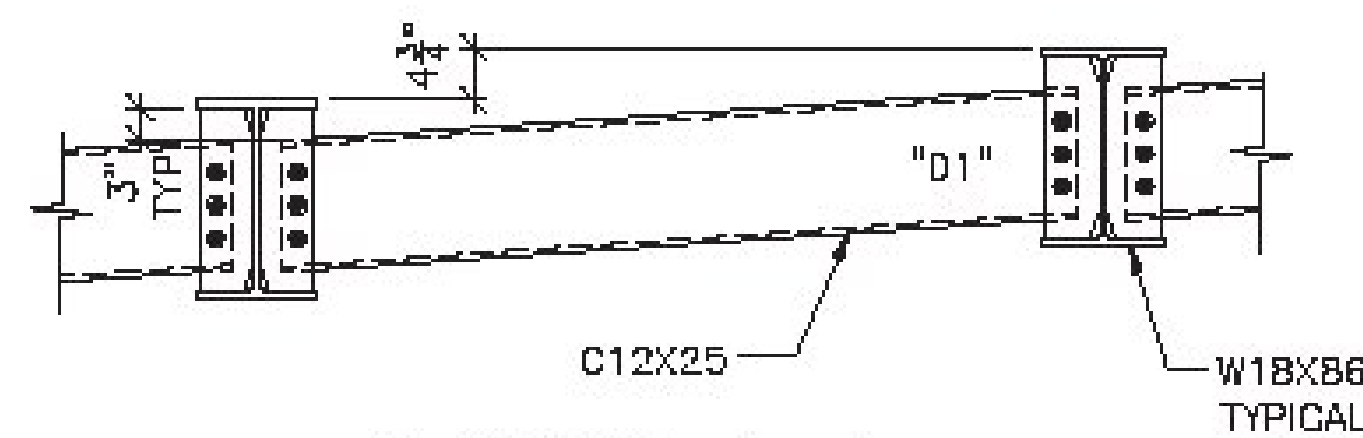


FRAMING PLAN



PLAN



SECTION A-A

GENERAL NOTES:

ALL MATERIALS AND CONSTRUCTION SHALL CONFORM TO STATE OF VERMONT AGENCY OF TRANSPORTATION'S STANDARD SPECIFICATIONS FOR CONSTRUCTION, DATED 2011, AND IT'S LATEST REVISIONS, AND THE AASHTO LRFD BRIDGE DESIGN SPECIFICATIONS, 7TH EDITION AND IT'S LATEST REVISIONS.

ALL MATERIAL SHALL CONFORM TO AASHTO M270 (ASTM A709) GRADE 50. ALL MATERIAL NOTED "CMN" SHALL MEET THE CHARPY V-NOTCH TESTING REQUIREMENTS OF ZONE 2, H FREQUENCY: 15 FT.-LB AT 40° F. NOT MUST BE ACCORDING TO ANSI/AASHTO/AWS D1.5, SECTION 6

ALL BOLTS SHALL BE 3/4" IN 1 1/8" HOLES AND CONFORMING TO ASTM A325, TYPE 1 WITH RO-CAP TESTING AND MECHANICALLY GALVANIZED. INCLUDING ADDITIONAL BOLT TESTING PER VTRANS SUBSECTION 714.05

ALL STEEL SHALL BE GALVANIZED IN ACCORDANCE WITH VTRANS SUBSECTION 726.08 AFTER FABRICATION.

PLEASE NOTE THAT THE SHEAR STUDS NEED TO BE INSTALLED ON THE BEAMS PRIOR TO GALVANIZING

FIELD BOLT LIST

MARK	QTY.	DESCRIPTION	LOCATION
FB3	120	3/4" X 2 1/4"	DIAPH. TO CONN. R
	120	DIRECT TENSION INDICATORS + THREE (3) TEST ASSEMBLIES	

Vermont Agency of Transportation
RECEIVED

CK'D BY rfooster OK'D BY WBP

April 20, 2017

RESUBMIT NO Approved
BY WPELLETIER DATE 04/20/2017

APPROVED: Approval of drawings is given in full or partial only to those persons on file with the State of Vermont. This approval does not constitute a warranty or endorsement of any product or service. The State of Vermont is not responsible for any errors or omissions in these drawings. The State of Vermont is not responsible for any errors or omissions in these drawings. The State of Vermont is not responsible for any errors or omissions in these drawings.

APPROVED AS NOTED

REVIEW AND PREPARED BY: WBP

DATE: 04/20/17

By: Michael J. Chen et al.

THIS DOCUMENT IS THE PROPERTY OF STANTEC INC. IT IS TO BE USED ONLY FOR THE PROJECT AND SITE SPECIFICALLY IDENTIFIED HEREIN. IT IS NOT TO BE REPRODUCED, COPIED, OR TRANSMITTED IN ANY FORM OR BY ANY MEANS, ELECTRONIC OR MECHANICAL, INCLUDING PHOTOCOPYING, RECORDING, OR BY ANY INFORMATION STORAGE AND RETRIEVAL SYSTEM, WITHOUT THE WRITTEN PERMISSION OF STANTEC INC.

FINISH	DATE	BY	DESCRIPTION
MATERIAL			SEE DETAIL SHEETS
HOLE			
ELECTRODES			
WELDS			PER WPS
SURFACE PREP			

NO.	DATE	BY	DESCRIPTION
1	4/18/17	WBP	PER APPROVAL

 ARC ADVANCED RESOURCES & CONST. ENTERPRISES, INCORPORATED P.O. BOX 180 WINDFELD, ME 04947 PHONE: (207) 869-2546 - FAX: (207) 225-4004	FRAMING PLAN TOWN OF JAY, VT. Rte. 242 (RURAL MAJOR COLLECTOR) PROJECT NUMBER: BH1 0270(5)	PROJECT NO. 18-185 DWG. NO. 1
---	---	--

J.A.C. DRAFTING/SUBSET 1/1