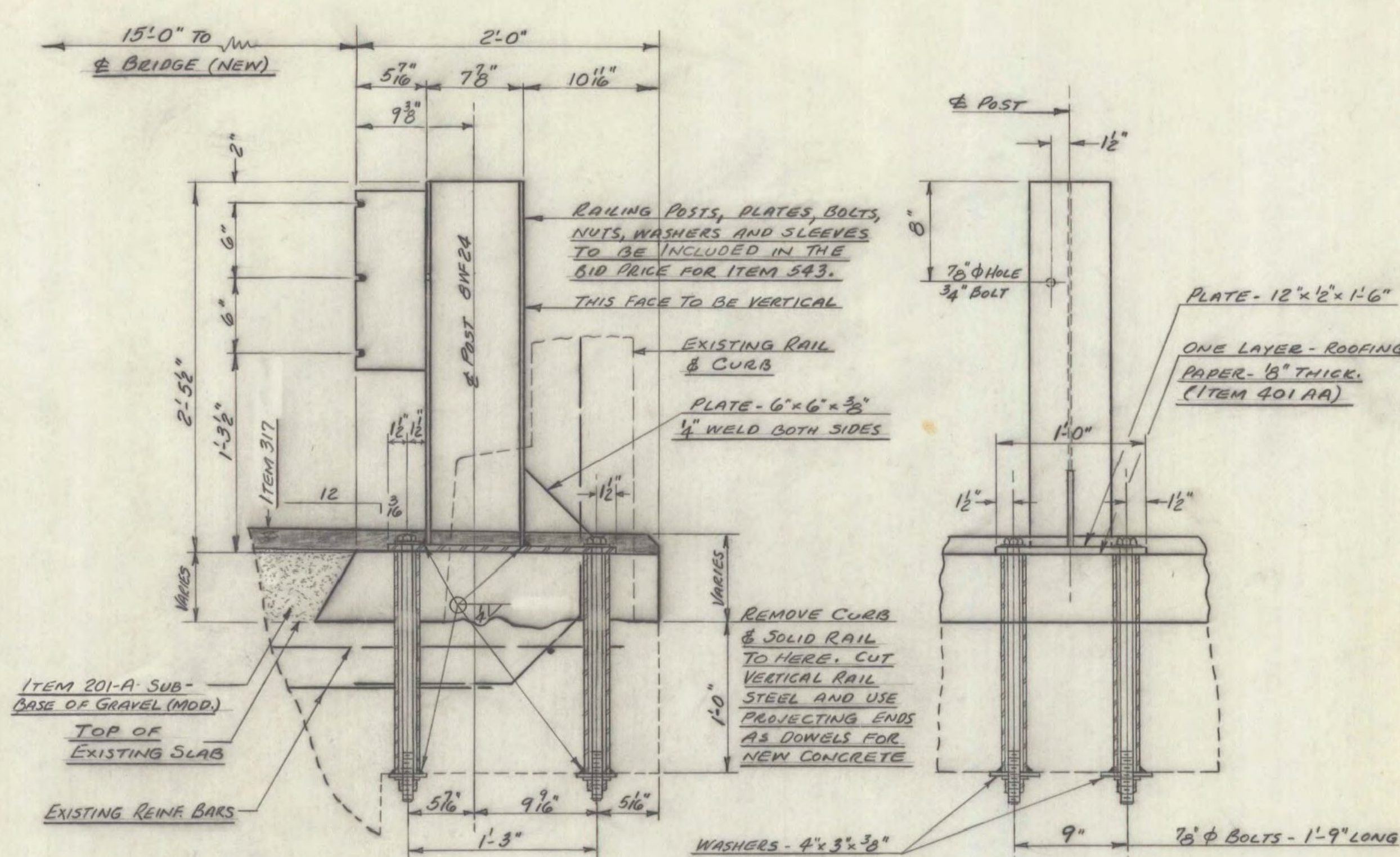
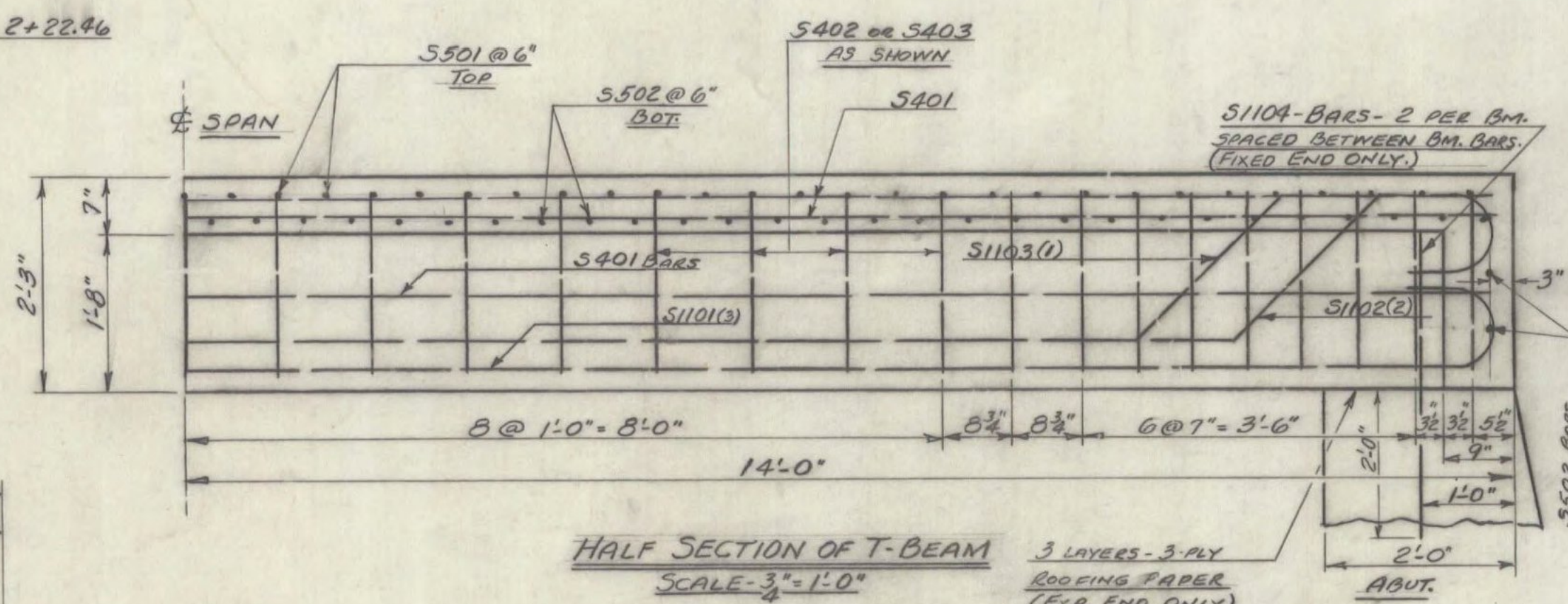


PLAN
SCALE 3/8" = 1'-0"

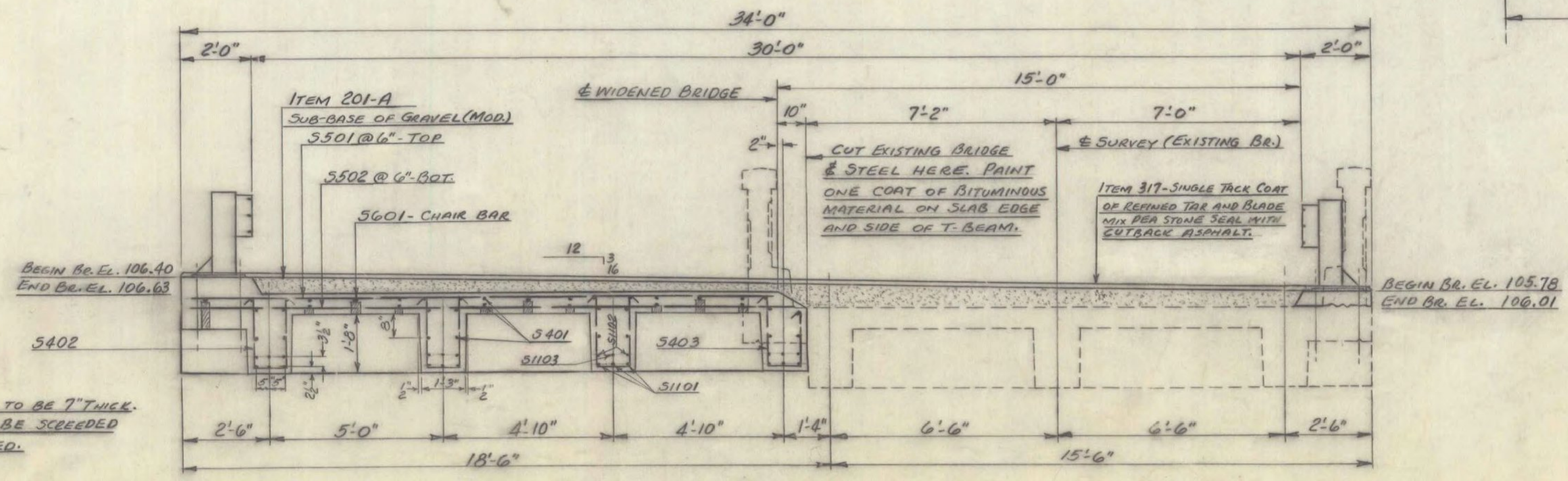


DETAIL OF GUARD RAIL POST (DOWNSTREAM)
SCALE 1 1/2" = 1'-0"
(UPSTREAM POSTS SIMILAR)

- NOTES**
1. FOR ADDITIONAL RAILING DETAILS SEE STD. DWS. G-3. RAILING POSTS TO BE NORMAL TO GRADE.
 2. RAIL POSTS, AND ALL RELATED HARDWARE, TO BE GALVANIZED.



HALF SECTION OF T-BEAM
SCALE 3/4" = 1'-0"



SECTION A-A
SCALE 3/8" = 1'-0"

ITEM NO.	ITEM	UNIT	NET	OVERRUN	TOTAL	FINAL
105-A	CHAN. EXCAV. OF EARTH	C.Y.				
106-B	CHAN. EXCAV. OF ROCK	C.Y.				
106-C	UNCLASS. CHAN. EXCAV.	C.Y.				
107	STRUCT. EXCAV.	C.Y.				
401-AA	CONC. CLASS AA (MOD.)	C.Y.			26	
402	REINF. STEEL (SEE REINF. STEEL DETS)	LBS.				
407	ASPHALTIC-ASB. COATING	S.Y.				
502-B	TREATED TIMBER PILING	L.F.				
503	SPLICES FOR STEEL PILING	EA.				
504	STEEL PILING	L.F.				
502-A	UNTREATED TIMBER PILING	L.F.				
201-A	SUB-BASE OF GRAVEL (MOD.)	C.Y.			18	
317	SINGLE THICK COAT OF REF. TAR & BLADE MIX PER STONE SEAL WITH OUTSIDE ASPHALT	Sq. Yd.			1258	
543	THREE CHAIR GUARD RAIL WITH STEEL POSTS (MOD.)	L.F.			56	
574	PREPARING SUPERSTRUCTURE FOR WIDENING	L.S.			1	

**JAY-BHF 0278(3)
SHEET 69 OF 72
FOR REFERENCE ONLY**

STATE OF VERMONT
DEPARTMENT OF HIGHWAYS

TOWN OF JAY
ROUTE No. JAY-TRAY LOG STA. 98+98

SUPERSTRUCTURE DETAILS
JAY PEAK BRIDGE

SCALE AS NOTED

SURVEYED BY BURLEY

DRAWN BY RTB 1/2" CHECKED BY RND

PROJECT No. STATE MAINT. 1222-474
SHEET 4 OF 12