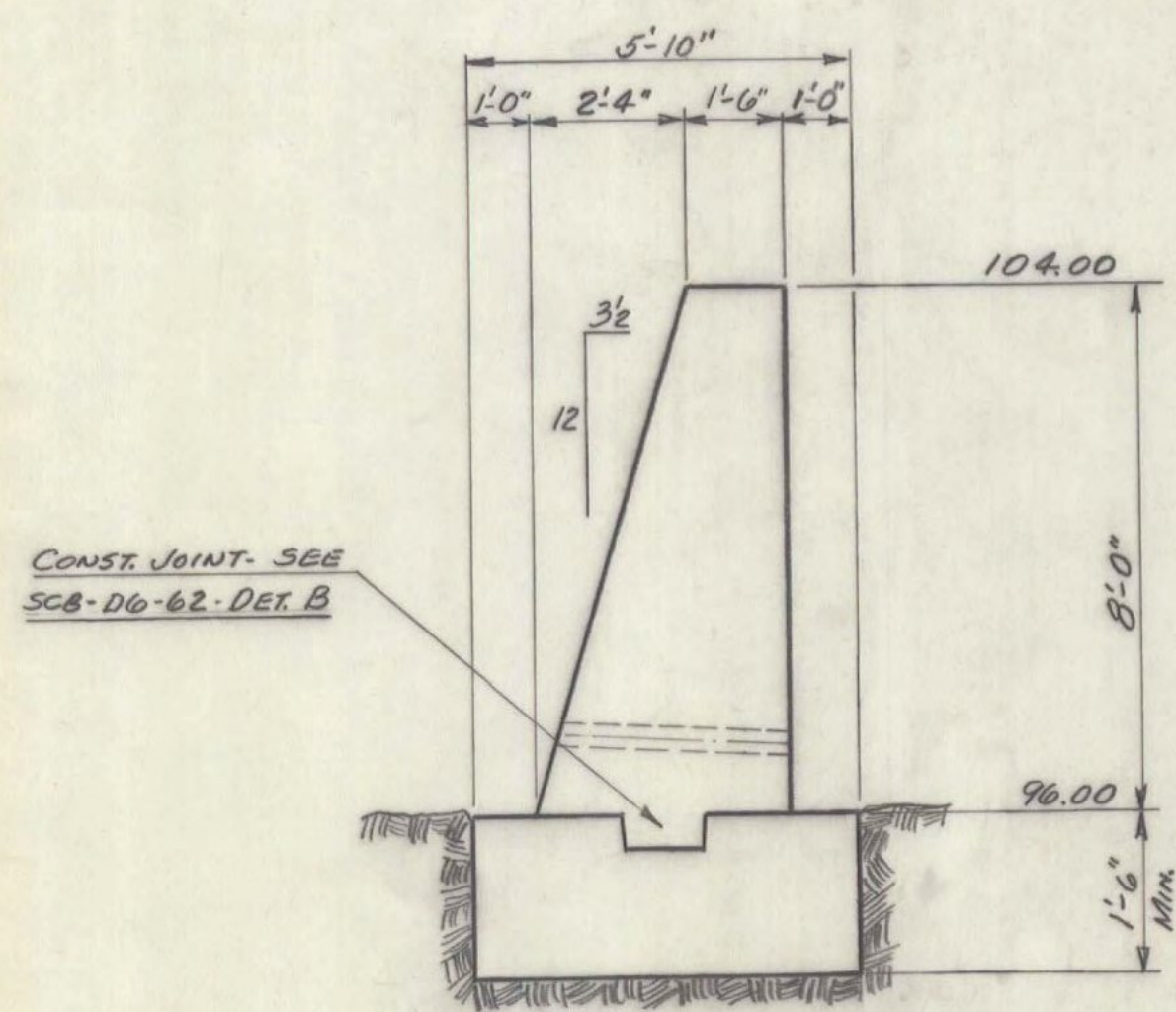
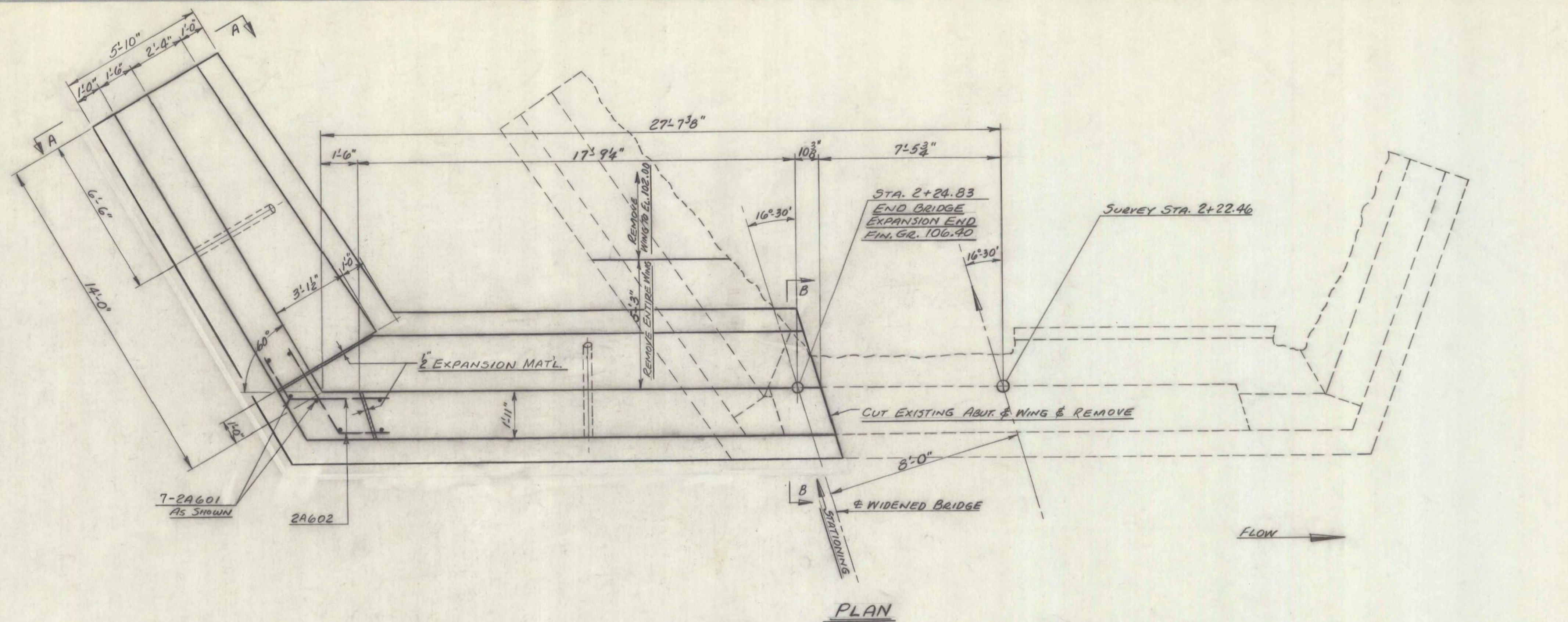


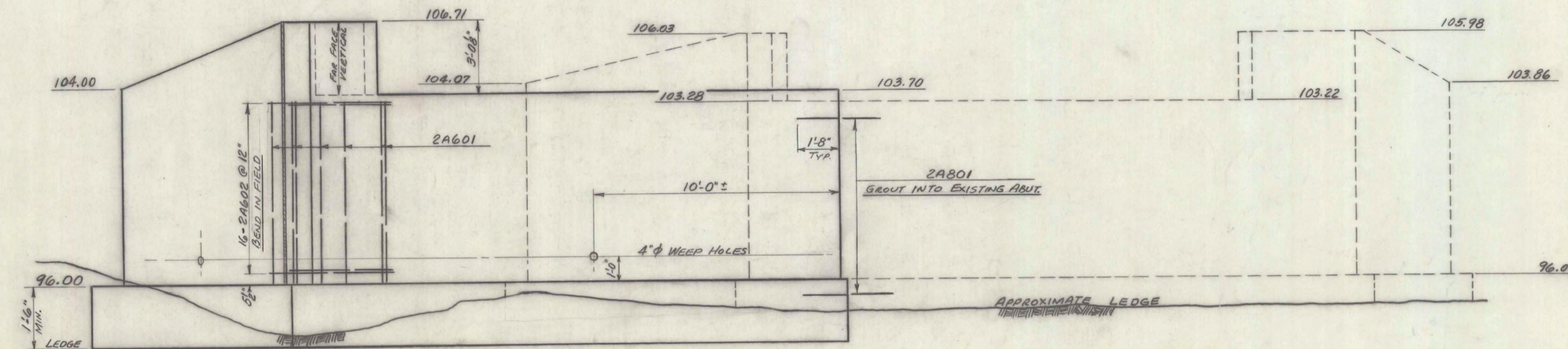
SECTION B-B



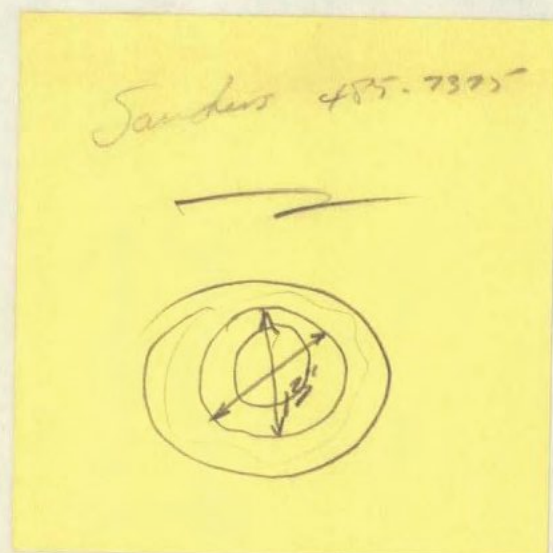
VIEW A-A



PLAN



ELEVATION



**JAY-BHF 0278(3)
SHEET 68 OF 72
FOR REFERENCE ONLY**

ITEM NO.	ITEM	UNIT	NET	OVERRUN	TOTAL	FINAL
106-A	CHAN. EXCAV. OF EARTH	C.Y.				
106-B	CHAN. EXCAV. OF ROCK	C.Y.				
106-C	UNCLASS. CHAN. EXCAV.	C.Y.				
107	STRUCT. EXCAV.	C.Y.			39	
401-B	CONC. CLASS B (MOD.)	C.Y.			39	
402	REINF. STEEL (SEE REINF. STEEL DETS)	LBS.				
407	ASPHALTIC-ASB. COATING	S.Y.				
502-B	TREATED TIMBER PILING	L.F.				
503	SPLICES FOR STEEL PILING	EA.				
504	STEEL PILING	L.F.				
502-A	UNTREATED TIMBER PILING	L.F.				
101-B	SOLID ROCK EXCAVATION	C.Y.			6	
521	STONE FILL (HEAVY TYPE)	C.Y.			6	

STATE OF VERMONT
DEPARTMENT OF HIGHWAYS

TOWN OF JAY
ROUTE NO. JAY TROY HIGHWAY LOG STA. 98+98

DETAILS OF ABUTMENT NO. 2
JAY PEAK BRIDGE

SCALE 3/8" = 1'-0"

SURVEYED BY BURLEY

DRAWN BY RTB 7/63 CHECKED BY RND

PROJECT NO. STATE MAINT. 1222-494

SHEET 3 OF 12