

BOX BEAM GUARDRAIL
 STA. 167+19.4 TO 167+40.4, RT
 STA. 167+69.1 TO 167+73.3, LT
 STA. 168+85.6 TO 168+89.8, RT
 STA. 168+90.1 TO 169+35.1, LT

APPROACH SECTION, GALVANIZED 3 RAIL BOXBEAM
 STA. 167+40.4 TO 167+72.4, RT
 STA. 167+73.3 TO 168+05.3, LT
 STA. 168+53.6 TO 168+85.6, RT
 STA. 168+58.1 TO 168+90.1, LT

MANUFACTURED TERMINAL END SECTION, TANGENT
 STA. 167+05.4 TO 167+19.4, RT
 STA. 169+35.1 TO 169+49.1, LT

DURABLE 4 INCH YELLOW LINE
 STA. 166+00.0 TO STA. 170+50.0, CL (DOUBLE)
 DURABLE 4 INCH WHITE LINE
 STA. 166+00.0 TO STA. 170+50.0, LT
 STA. 166+00.0 TO STA. 170+50.0, RT

REMOVAL AND DISPOSAL OF GUARDRAIL
 STA. 167+53.7 TO 168+10.5, RT
 STA. 167+62.3 TO 168+18.6, LT
 STA. 168+39.4 TO 168+59.0, RT
 STA. 168+50.7 TO 169+54.9, LT

RELOCATE MAILBOX SINGLE SUPPORT
 STA. 169+83.9, LT

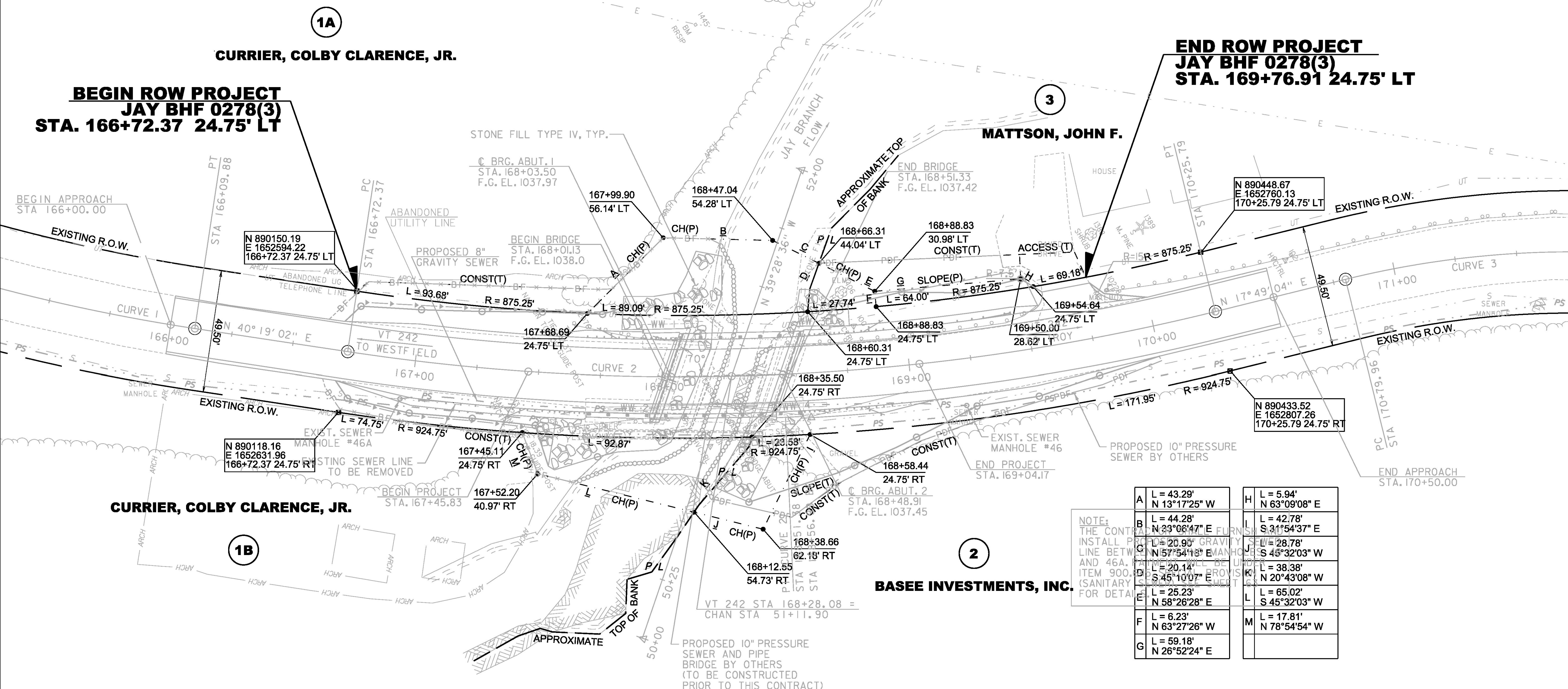
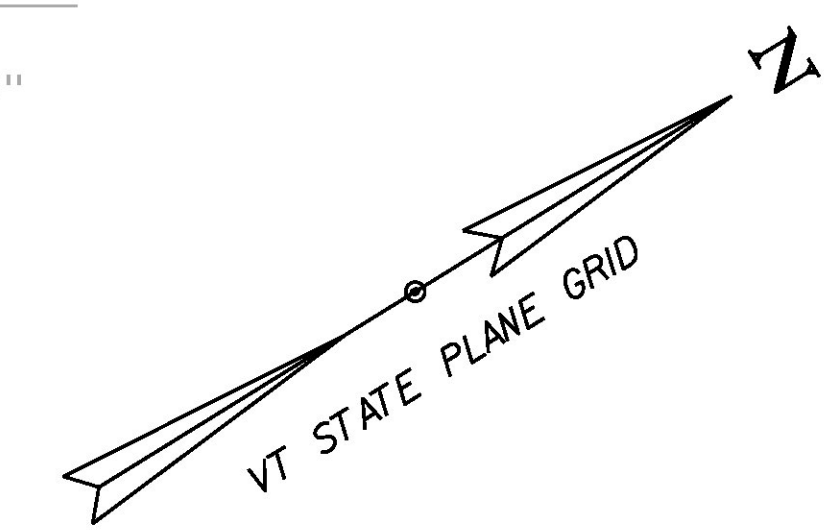
CONSTRUCT DRIVE
 STA. 169+67, LT (PAVED)

PLAN REFERENCES
 - HIGHWAY PROJECT JAY SK4 (1959)
 - SURVEY FOR BASEE INVESTMENTS, INC.,
 BY GEORGE W. RUMERY, DATED 6/2008.

CURVE 1 DATA
 PC = 162+40.92
 DELTA = 27°48'56"
 D = 7°32'20"
 R = 760.00'
 T = 188.19'
 L = 368.96'
 E = 22.95'

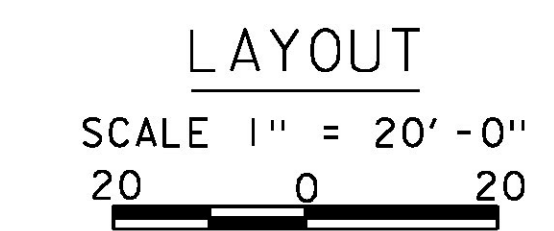
CURVE 2 DATA
 DELTA = 22°29'57"
 D = 6°21'58"
 R = 900.00'
 T = 179.02'
 L = 353.42'
 E = 17.63'

CURVE 3 DATA
 PT = 173+33.55
 DELTA = 38°14'08"
 D = 15°04'40"
 R = 380.00'
 T = 131.72'
 L = 253.59'
 E = 22.18'



LINES SHOWN ON THIS PLAN AS EXISTING PROPERTY LINES (P/L) ARE BELIEVED TO BE ACCURATE BUT SHOULD NOT BE RELIED UPON FOR PURPOSES UNRELATED TO THE STATE OF VERMONT'S ACQUISITION OF LAND AND RIGHTS FOR THIS PROJECT.

EXISTING BRIDGE INFO
 CONCRETE T-BEAM BRIDGE
 28' SPAN, 34'-6" WIDE
 BUILT 1927,
 RECONSTRUCTED 1964



FOR R.O.W. USE ONLY

NOTE: THE CONTRACTOR SHALL FURNISH AND INSTALL PRESSURE SEWER LINE BETWEEN MANHOLE #46 AND 46A. SEE ITEM 900.0 (SANITARY SEWER) OF THE SPECIFICATIONS FOR DETAILS.

A	L = 43.29' N 13°17'25" W	H	L = 5.94' N 63°09'08" E
B	L = 44.28' N 33°08'47" E	I	L = 42.78' S 31°54'37" E
C	L = 20.90' N 57°54'13" E	J	L = 28.78' S 45°32'03" W
D	L = 20.14' S 45°10'07" E	K	L = 38.38' N 20°43'08" W
E	L = 25.23' N 58°26'28" E	L	L = 65.02' S 45°32'03" W
F	L = 6.23' N 63°27'26" W	M	L = 17.81' N 78°54'54" W
G	L = 59.18' N 26°52'24" E		

PROJECT NAME: JAY
 PROJECT NUMBER: BHF 0278(3)
 FILE NAME: z12ci54bdr_ROW.dgn
 PROJECT LEADER: M. CHENETTE
 DESIGNED BY: H. PETROVS
 LAYOUT SHEET - R.O.W.
 PLOT DATE: 8/16/2016
 DRAWN BY: L. BUXTON
 CHECKED BY: M. CHENETTE
 SHEET 65 OF 72

