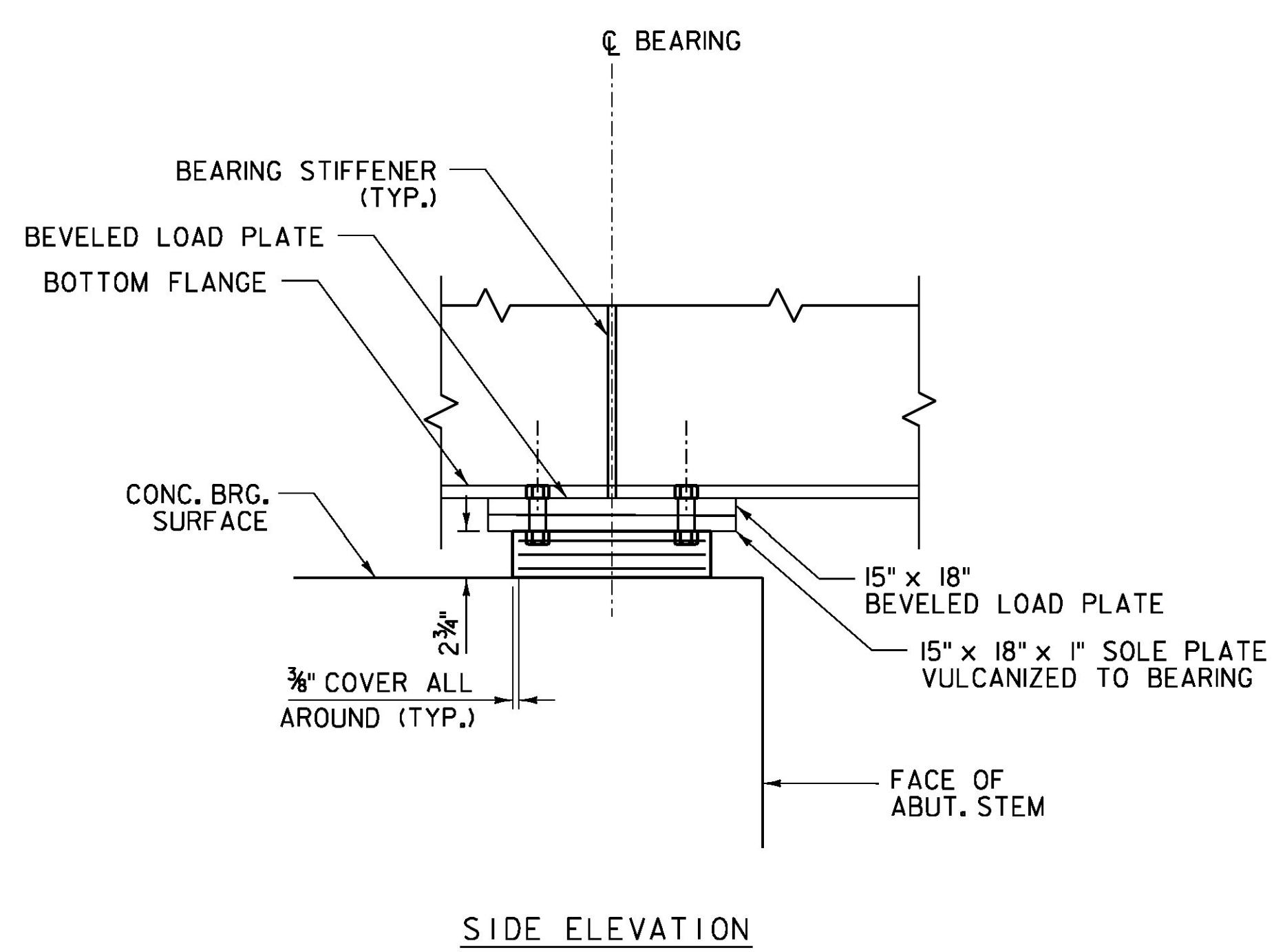
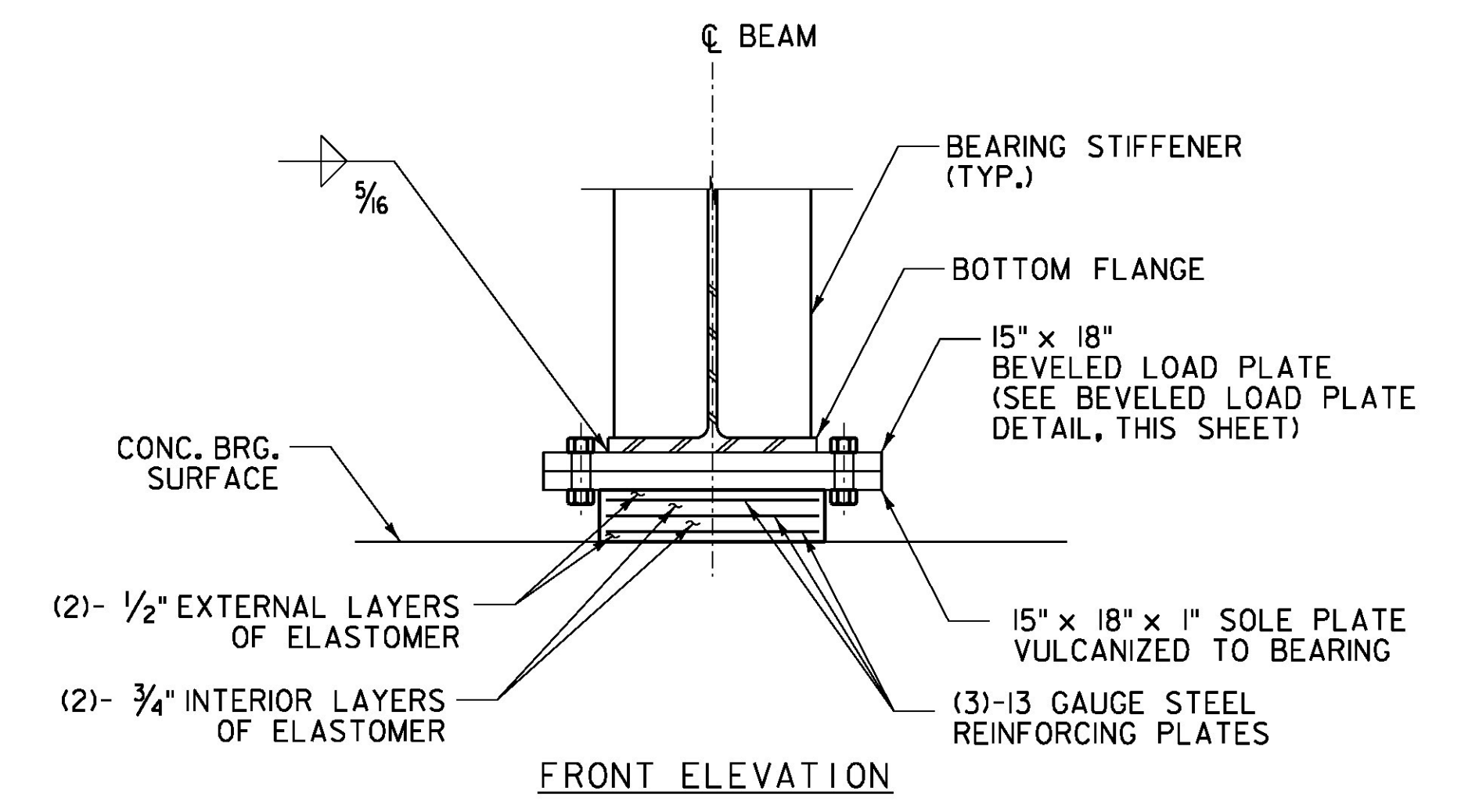


ELASTOMERIC BEARING PLAN

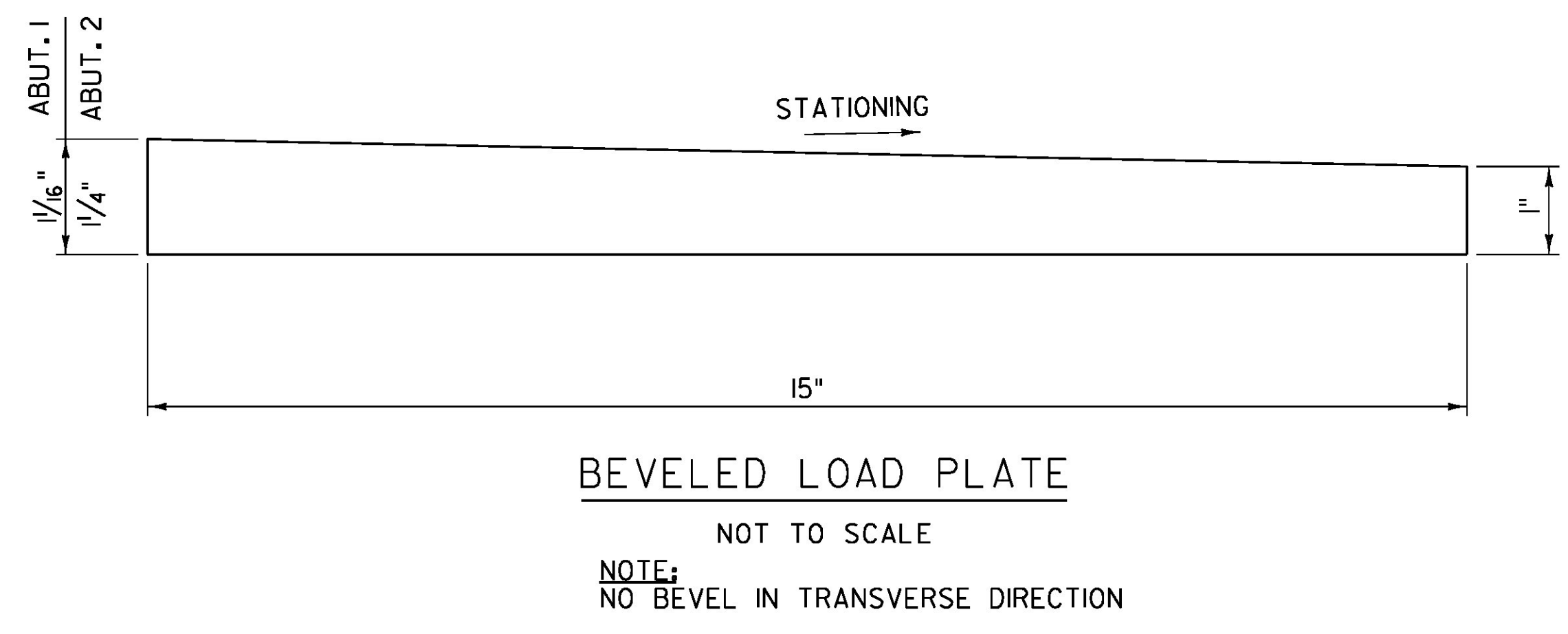


SIDE ELEVATION



FRONT ELEVATION

ELASTOMERIC BEARING ASSEMBLY  
SCALE 1/2" = 1'-0"



BEVELED LOAD PLATE

NOT TO SCALE  
NOTE:  
NO BEVEL IN TRANSVERSE DIRECTION

- BEARING NOTES:**
1. BEARINGS SHALL CONFORM TO APPLICABLE SUBSECTIONS OF THE STANDARD SPECIFICATION SECTIONS 531 AND 731.
  2. ELASOTMERIC BEARINGS AND SOLE PLATE SHALL BE PAID FOR UNDER ITEM 531.8. LOAD PLATE AND CONNECTION HARDWARE ARE TO BE PAID FOR AS STRUCTURAL STEEL.
  3. FABRICATION DRAWINGS INCLUDING BONDING AND VULCANIZING PROCEDURES SHALL BE SUBMITTED IN ACCORDANCE WITH SUBSECTION 531.03.
  4. THE CONCRETE SURFACE UNDER THE BEARING DEVICE SHALL BE LEVEL.
  5. DECK POUR ADJUSTMENT: THE BOTTOM FLANGE IS ANTICIPATED TO ELONGATE LESS THAN 1/4" DUE TO PLACEMENT OF THE CONCRETE DECK AND THE BEARINGS ARE DESIGNED TO ACCOMODATE THIS MOVEMENT. THE TEMPERATURE SETTING RANGE FOR INSTALLATION OF THE ELASTOMERIC BEARINGS WITHOUT THE NEED FOR ADJUSTMENT IS 20 TO 70 DEGREES F.
  6. THE SHEAR MODULUS OF THE ELASTOMER SHALL BE BETWEEN 130 AND 175 psi.
  7. VULCANIZING ELASTOMER TO STEEL PLATES SHALL BE DONE DURING PRIMARY MOLD PROCESS.
  8. AN 1/8" GAP SHALL BE LEFT BELOW THE NUT. THE ANCHOR BOLT THREADS SHALL BE BURRED TO PREVENT REMOVAL OF THE NUTS (TYP.)
  9. STEEL REINFORCED ELASTOMERIC BEARINGS WERE DESIGNED PER METHOD = A.
- ELASTOMERIC BEARING DESIGN CRITERIA:
- ABUTMENT 1 AND 2 BEARINGS - SERVICE LOADS
- A. DESIGN DEAD LOAD REACTION = 22.9 KIPS/BEARING
  - B. DESIGN LIVE LOAD REACTION = 38.0 KIPS/BEARING
  - C. ROTATION CAPACITY = 0.015 RADIAN
10. ALL STEEL IN BEARING DEVICES SHALL BE AASHTO M 270M/M 270, (ASTM A-709) GRADE 36 (MIN.).



PROJECT NAME: JAY	PLOT DATE: 8/16/2016
PROJECT NUMBER: BHF 0278(3)	DRAWN BY: L. BUXTON
FILE NAME: z12ci54brg-det.dgn	DESIGNED BY: N. TIRK
PROJECT LEADER: M. CHENETTE	CHECKED BY: T. KNIGHT
BEARING DETAILS	SHEET 27 OF 72