

BOX BEAM GUARDRAIL

STA. 167+19.1 TO 167+37.1, RT
 STA. 167+68.8 TO 167+73.6, LT
 STA. 168+88.9 TO 168+93.7, RT
 STA. 168+90.4 TO 169+26.4, LT

APPROACH SECTION, GALVANIZED 3 RAIL BOXBEAM

STA. 167+37.1 TO 167+69.1, RT
 STA. 167+73.6 TO 168+05.6, LT
 STA. 168+54.9 TO 168+88.9, RT
 STA. 168+56.4 TO 169+90.4, LT

MANUFACTURED TERMINAL END SECTION, TANGENT

STA. 167+02.1 TO 167+19.1, RT
 STA. 169+26.4 TO 169+43.4, LT

DURABLE 4 INCH YELLOW LINE

STA. 166+00.0 TO STA. 170+50.0, CL (DOUBLE)

DURABLE 4 INCH WHITE LINE

STA. 166+00.0 TO STA. 170+50.0, LT
 STA. 166+00.0 TO STA. 170+50.0, RT

REMOVAL AND DISPOSAL OF GUARDRAIL

STA. 167+53.7 TO 168+10.5, RT
 STA. 167+62.3 TO 168+18.6, LT
 STA. 168+39.4 TO 168+59.0, RT
 STA. 168+50.7 TO 169+54.9, LT

RELOCATE MAILBOX SINGLE SUPPORT

STA. 169+83.9, LT

CONSTRUCT DRIVE

STA. 169+67, LT (PAVED)

CURVE 1 DATA

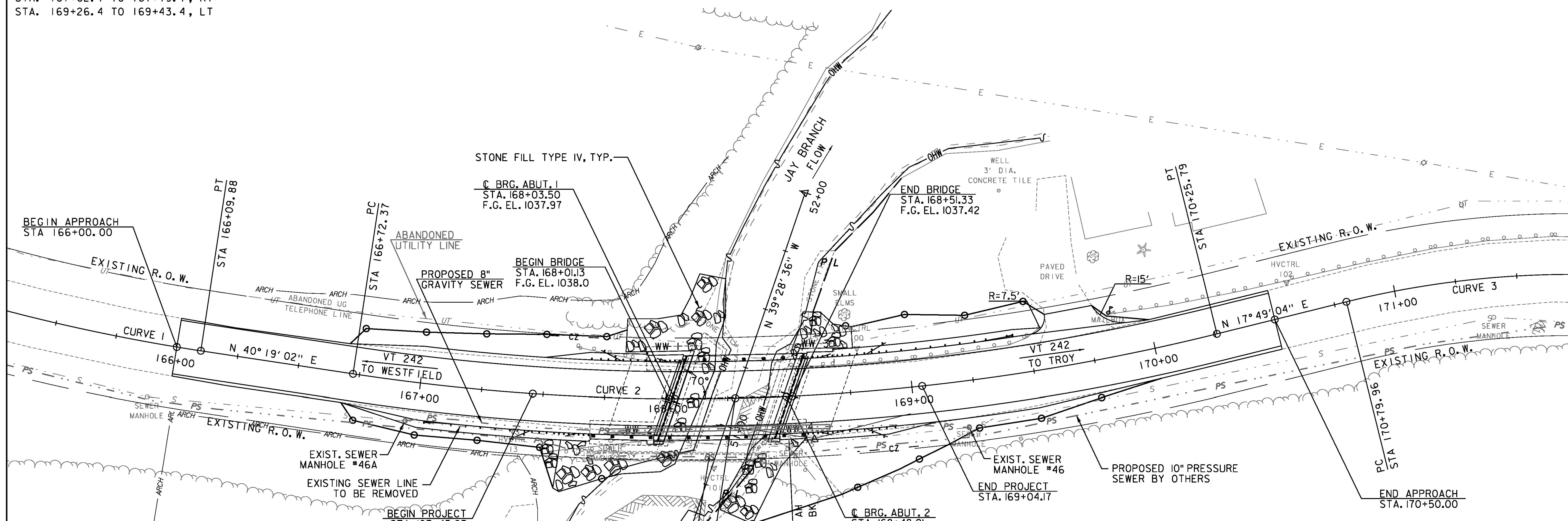
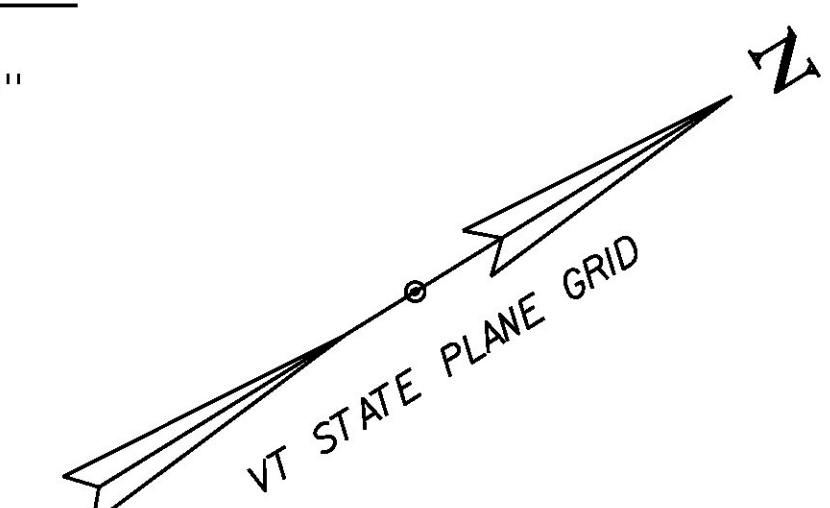
PC = 162+40.92
 DELTA = 27°48'56"
 D = 7°32'20"
 R = 760.00'
 T = 188.19'
 L = 368.96'
 E = 22.95'

CURVE 2 DATA

DELTA = 22°29'57"
 D = 6°21'58"
 R = 900.00'
 T = 179.02'
 L = 353.42'
 E = 17.63'

CURVE 3 DATA

PT = 173+33.55
 DELTA = 38°14'08"
 D = 15°04'40"
 R = 380.00'
 T = 131.72'
 L = 253.59'
 E = 22.18'



TRAFFIC SIGN SUMMARY

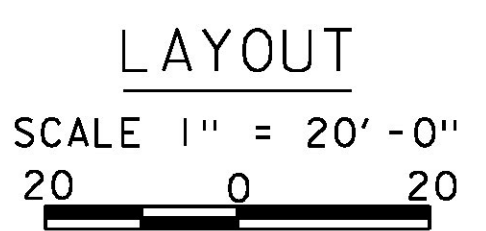
STATION	SIGN LEGEND	SIGN DIMENSIONS		NEW & SALVAGED SIGNS		NO. OF POSTS	NEW SIGN POSTS			REMARKS	DETAIL IN SHSM BOOK	STD. SHEET NUMBER	
		E A	WIDTH (in)	HEIGHT (in)	TYPE "A"		SALV. SIGN	SQUARE STEEL (in)					
								1.75	2.0				2.5
167+95, RT		I	6	10	0.42	I	X			X	VR-701	T-42	
168+62, LT		I	6	10	0.42	I	X			X	VR-701	T-42	
168+30, LT		I	24	30		I		X		X	R2-1	X	
TOTALS					SF	EA		FT					
					0.84	1		31					

FINAL POST LENGTHS ARE TO BE DETERMINED IN THE FIELD. POST SIZES ARE COMPUTED BASED ON INFORMATION FURNISHED ON THE STANDARD SHEETS AND THE VTRANS "SIGN POST DESIGN GUIDELINE."

NOTE:
 THE CONTRACTOR SHALL FURNISH AND INSTALL PROPOSED 8" GRAVITY SEWER LINE BETWEEN EXISTING MANHOLES 46 AND 46A. PAYMENT WILL BE UNDER ITEM 900.645, SPECIAL PROVISION (SANITARY SEWER). SEE SHEET 63 FOR DETAILS.

EXISTING BRIDGE INFO
 CONCRETE T-BEAM BRIDGE
 28' SPAN, 34'-6" WIDE
 BUILT 1927,
 RECONSTRUCTED 1964

PROPOSED 10" PRESSURE SEWER AND PIPE BRIDGE BY OTHERS (TO BE CONSTRUCTED PRIOR TO THIS CONTRACT)



PROJECT NAME: JAY
 PROJECT NUMBER: BHF 0278(3)
 FILE NAME: z12ci54bdr.dgn
 PROJECT LEADER: M. CHENETTE
 DESIGNED BY: I. MAYNARD
 LAYOUT SHEET

PLOT DATE: 8/16/2016
 DRAWN BY: I. MAYNARD
 CHECKED BY: M. CHENETTE
 SHEET 12 OF 72

