

GPS CONTROL POINTS

HVCTRL #1

IRENE
 NORTH = 886825.990
 EAST = 1663654.360
 ELEV. = 830.06

GENERAL LOCATION, TROY, VT.

TO REACH FROM THE INTERSECTION OF VT ROUTE 242 AND VT ROUTE 101 GO SOUTH ALONG VT ROUTE 101 FOR 1.0 MI (1.6 KM) TO THE SITE OF THE MARK ON THE RIGHT.

THE MARK IS SET 20 CM (8 INCHES) BELOW GROUND SURFACE IN THE TOP OF A FENO STYLE MONUMENT.

IT IS 7.2 M (23.6 FT) WEST OF AND ABOUT 0.4 M (1.3 FT) LOWER THAN THE CENTERLINE OF VT ROUTE 101, 28.9 M (94.8 FT) SOUTHEAST OF POLE NO 36E, 47.9 M (157.2 FT) WEST OF A 10 CM (4 INCH) DOUBLE-TRUNK WHITE BIRCH, 71.0 M (232.9 FT) NORTH OF THE CENTERLINE OF A CURB CUT FOR A WOODS ROAD ACCESS ON THE WEST SIDE OF VT ROUTE 101 AND 0.3 M (1.0 FT) EAST OF A FIBERGLASS WITNESS POST.

HVCTRL #2

MCDERMOT
 NORTH = 891948.545
 EAST = 1662740.181
 ELEV. = 876.712

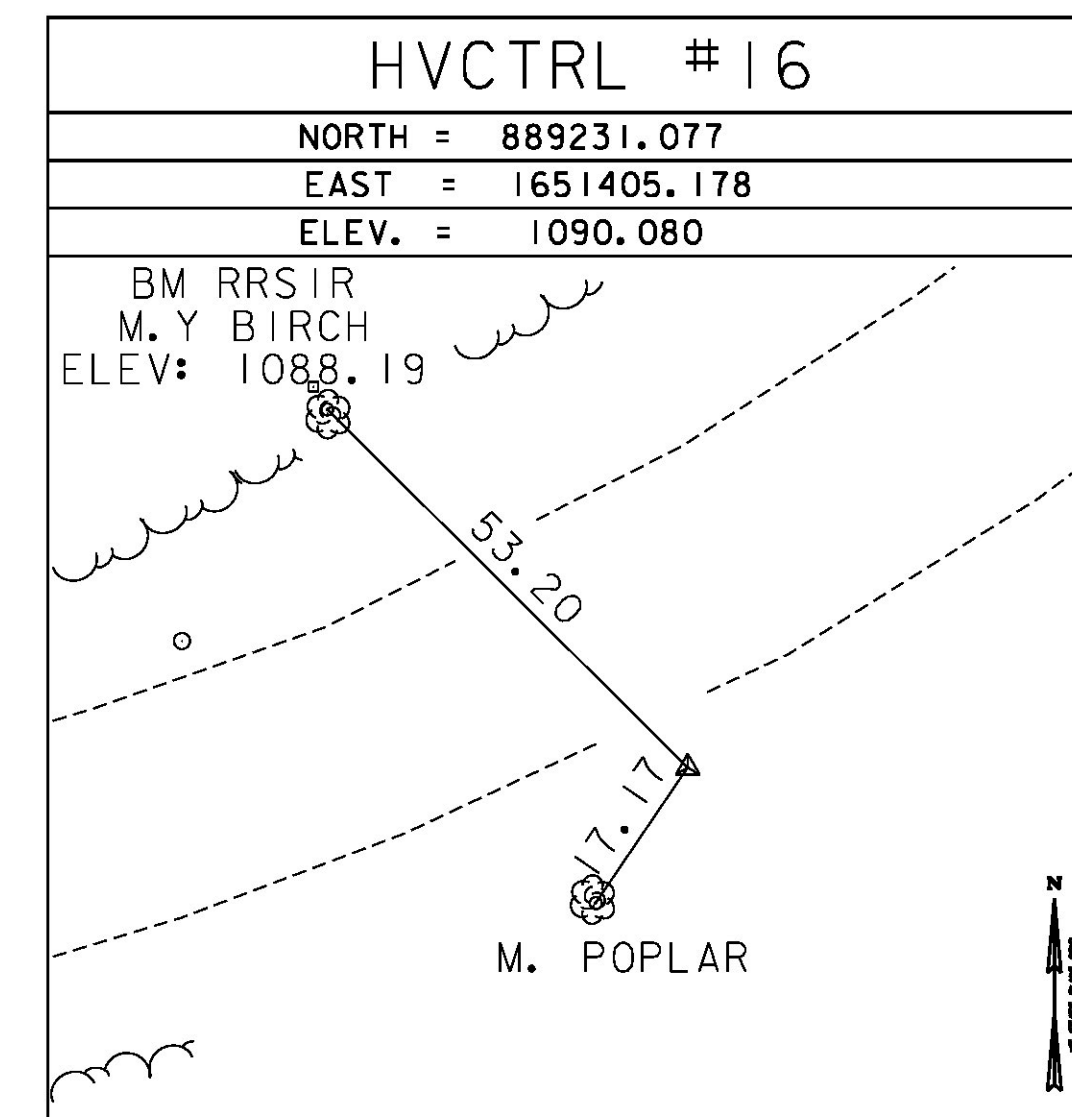
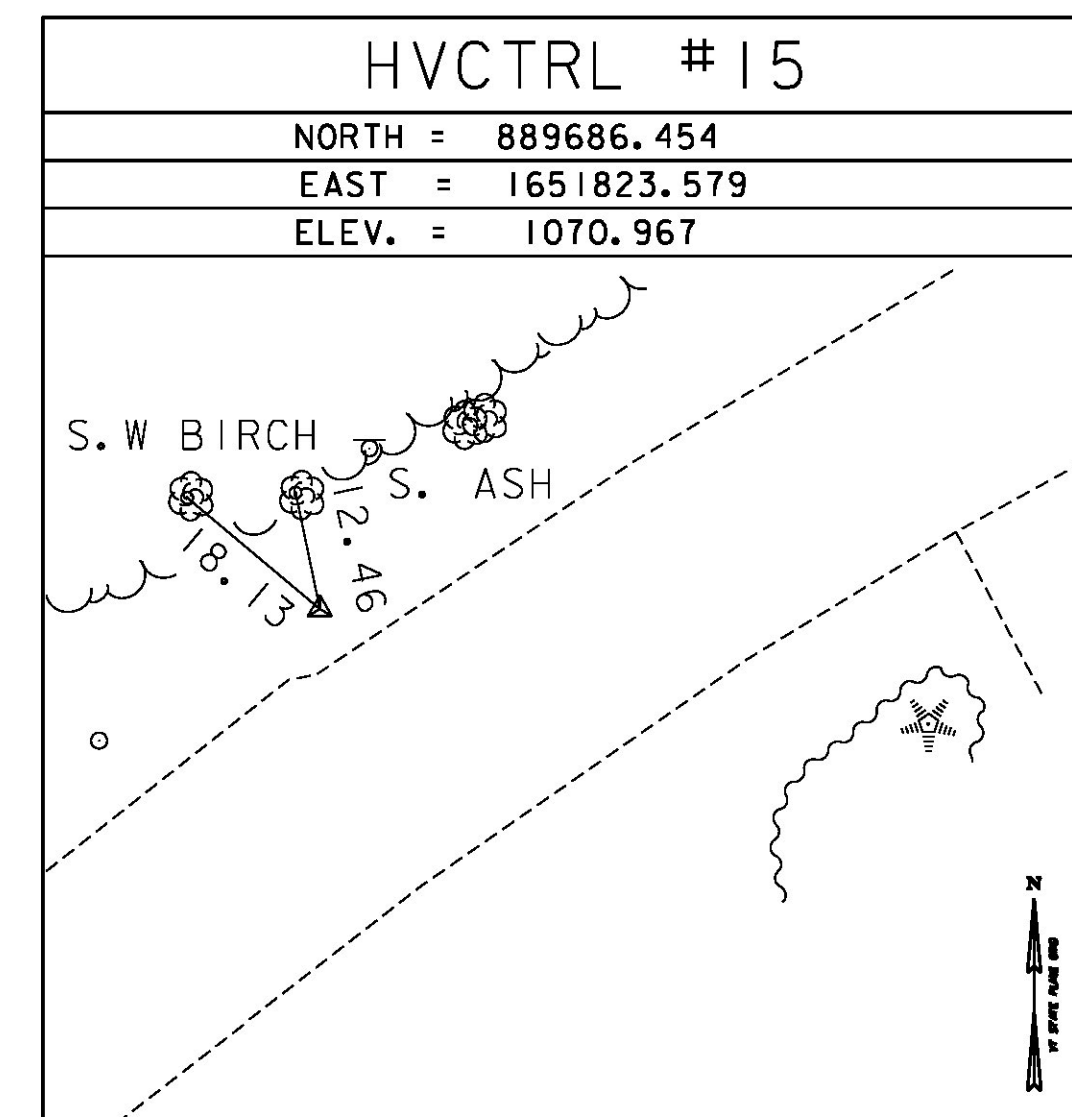
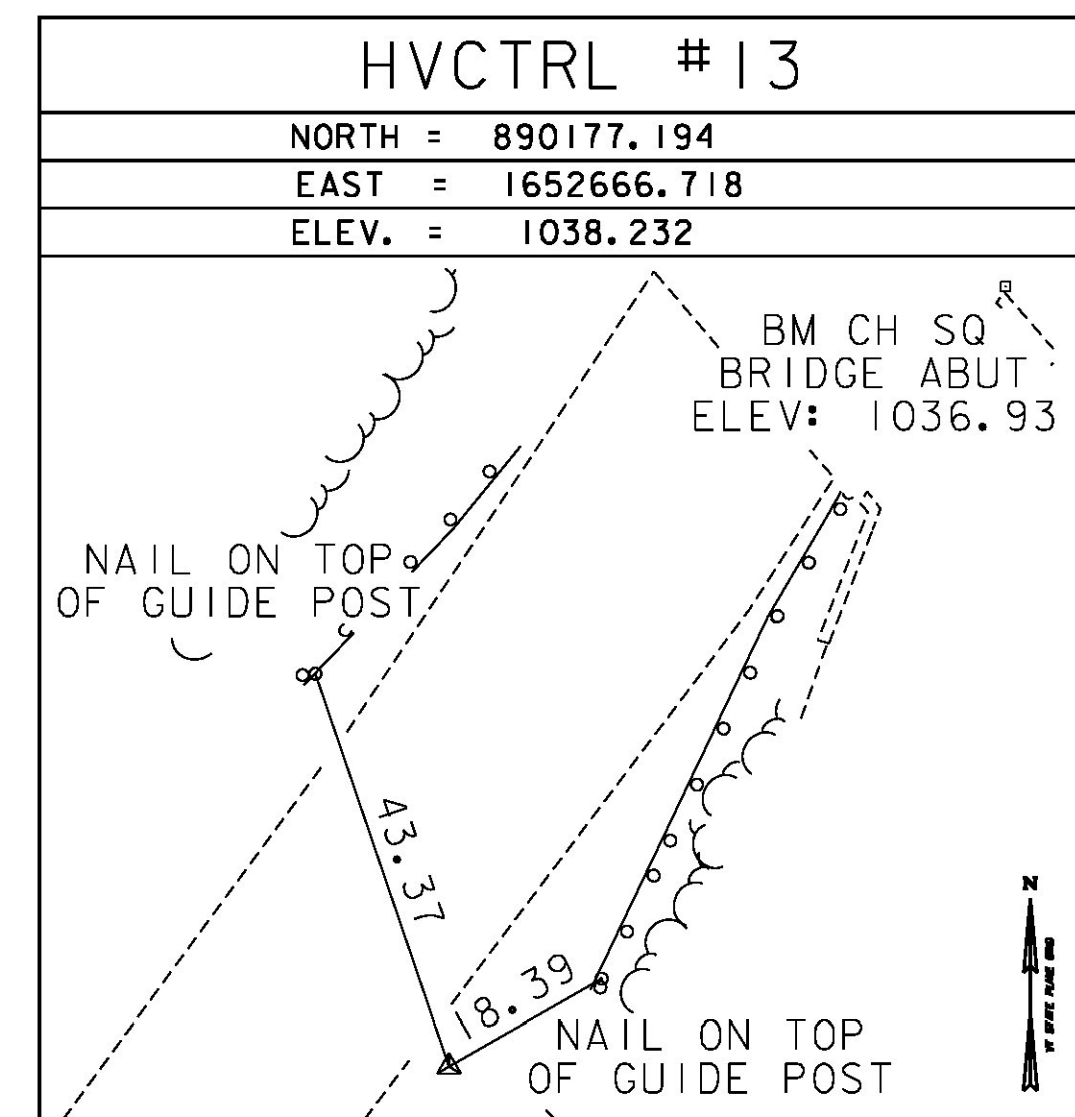
GENERAL LOCATION, TROY, VT. OWNERSHIP, IRENE MCDERMOT, CROSS ROAD, JAY, VT 05859.

TO REACH FROM THE INTERSECTION OF VT ROUTE 242 AND VT ROUTE 101 GO WEST ALONG VT ROUTE 242 FOR 0.05 MI (0.1 KM) TO THE SITE OF THE MARK ON THE LEFT.

THE MARK IS SET FLUSH WITH THE GROUND SURFACE IN THE TOP OF A 0.7 M (2.3 FT) X 0.5 M (1.6 FT) ROCK OUTCROP IN A LARGE FIELD.

IT IS 52.8 M (173.2 FT) SOUTH OF AND ABOUT 0.5 M (1.6 FT) LOWER THAN THE CENTERLINE OF VT ROUTE 242, 72.0 M (236.2 FT) SOUTHEAST OF POLE NO 3 10/51SX AND 46.4 M (152.2 FT) SOUTH-SOUTHWEST OF POLE NO 10/5T AND A FIBERGLASS WITNESS POST.

TRAVERSE TIES



HVCTRL #14

SEWER
 NORTH = 889902.639
 EAST = 1652385.564
 ELEV. = 1050.452

GENERAL LOCATION, JAY, VT.

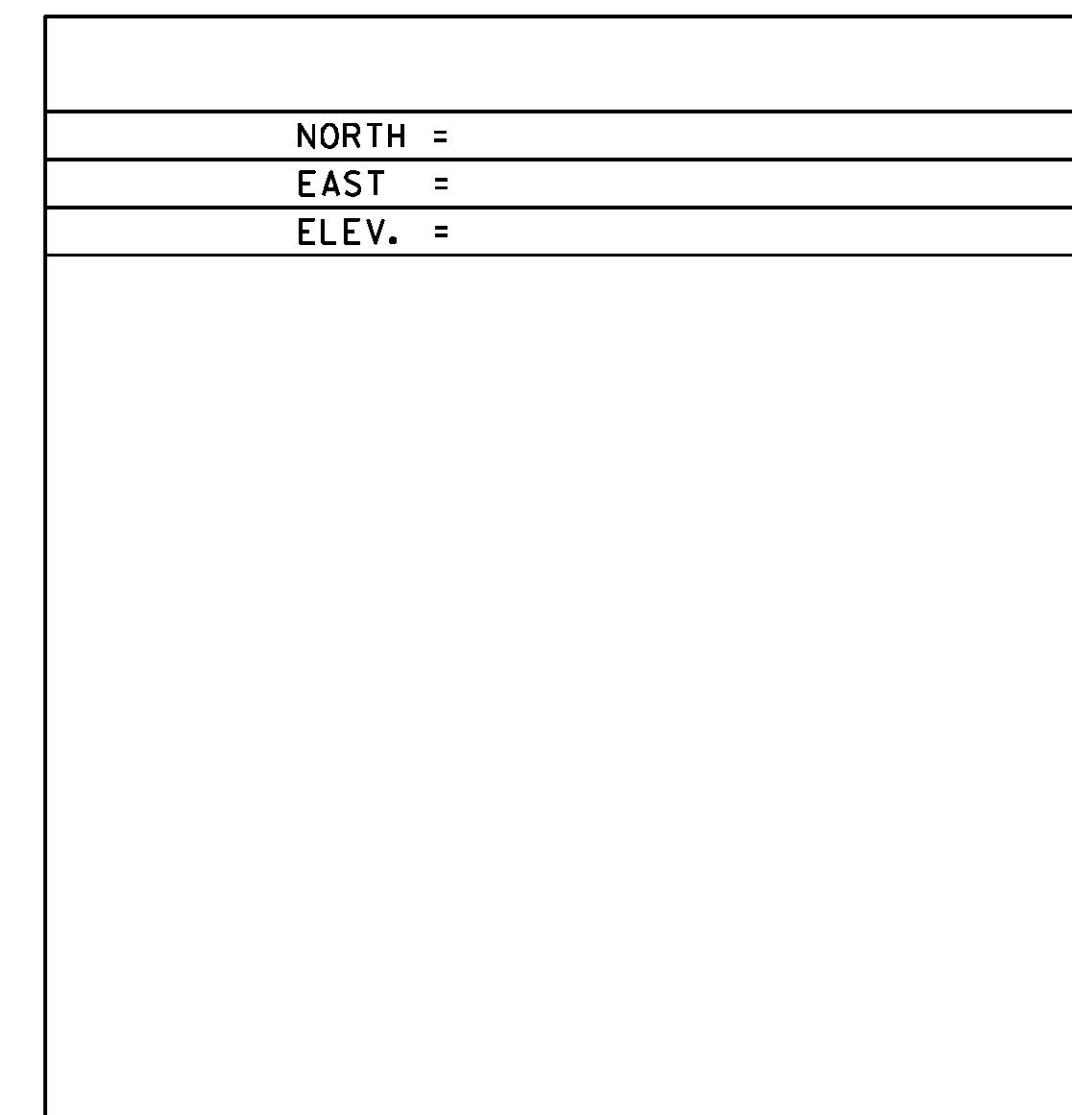
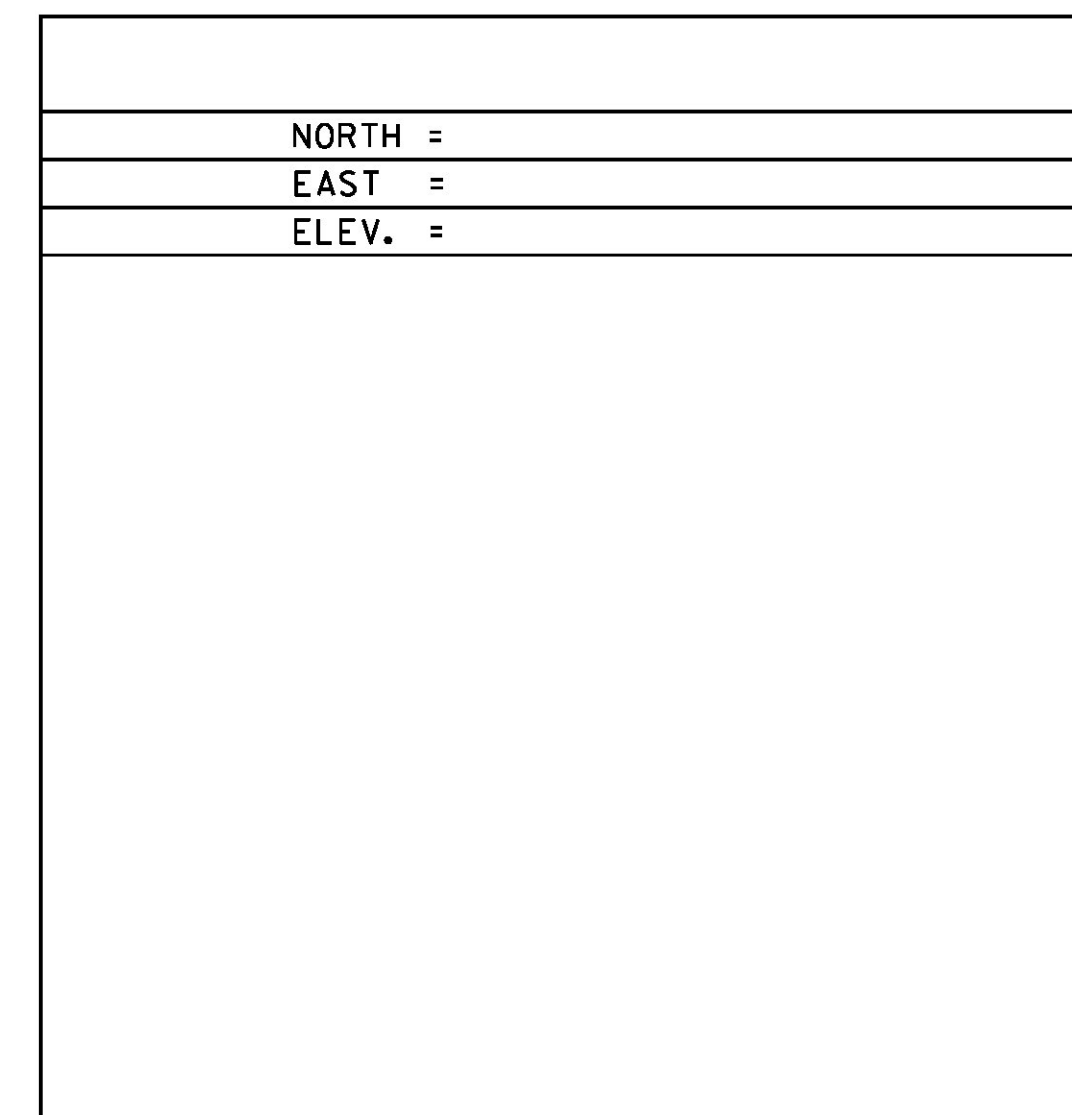
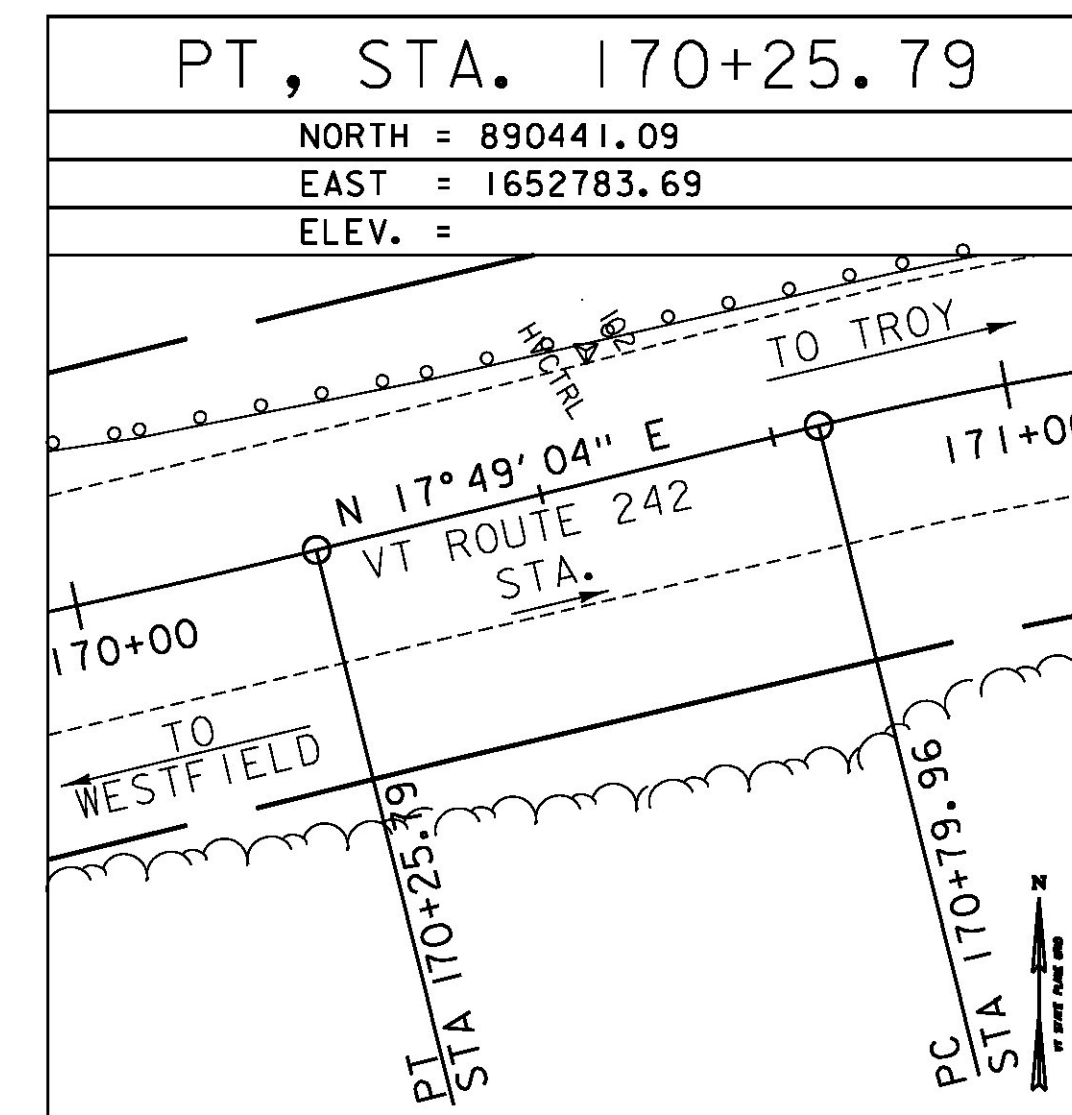
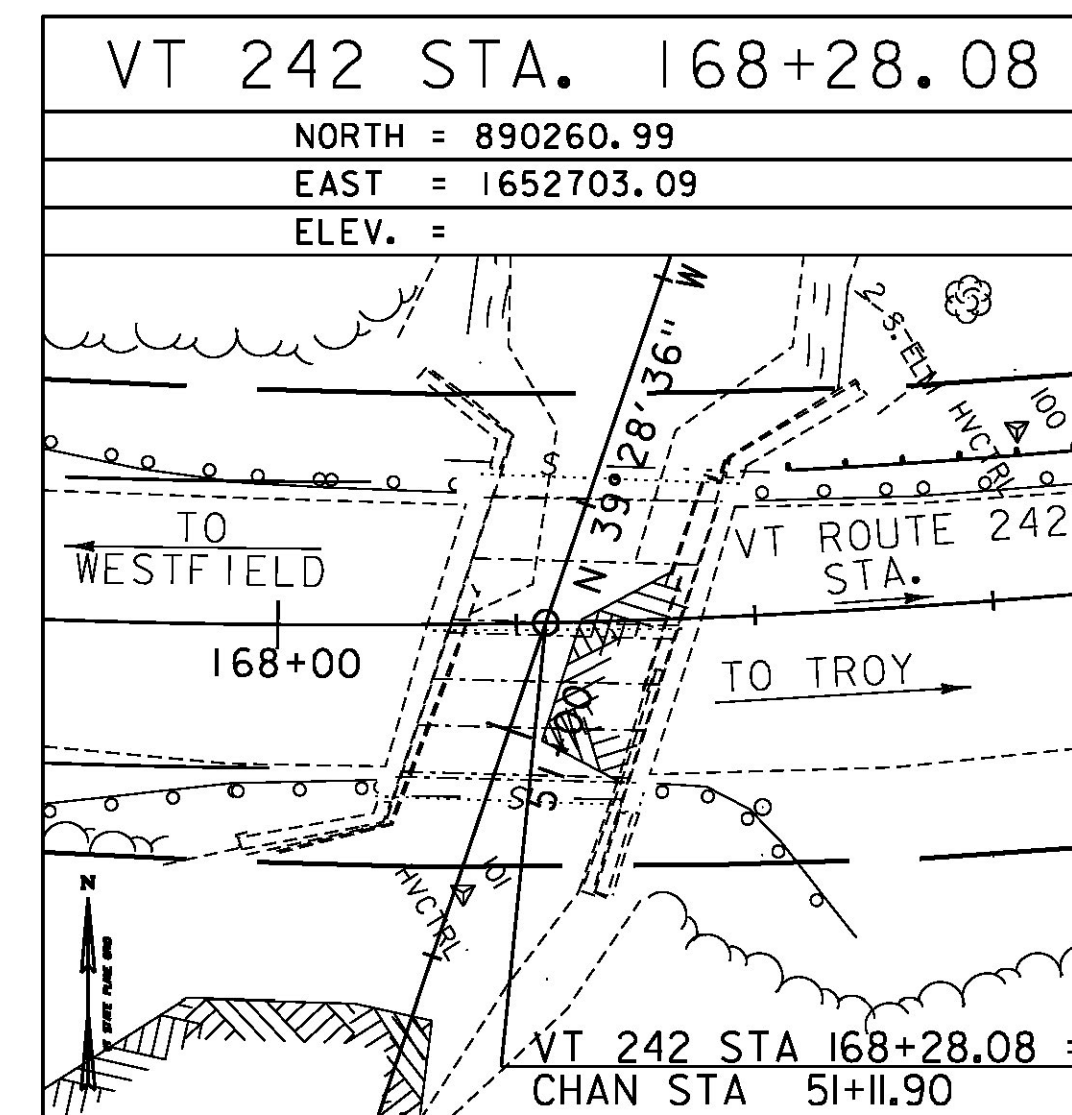
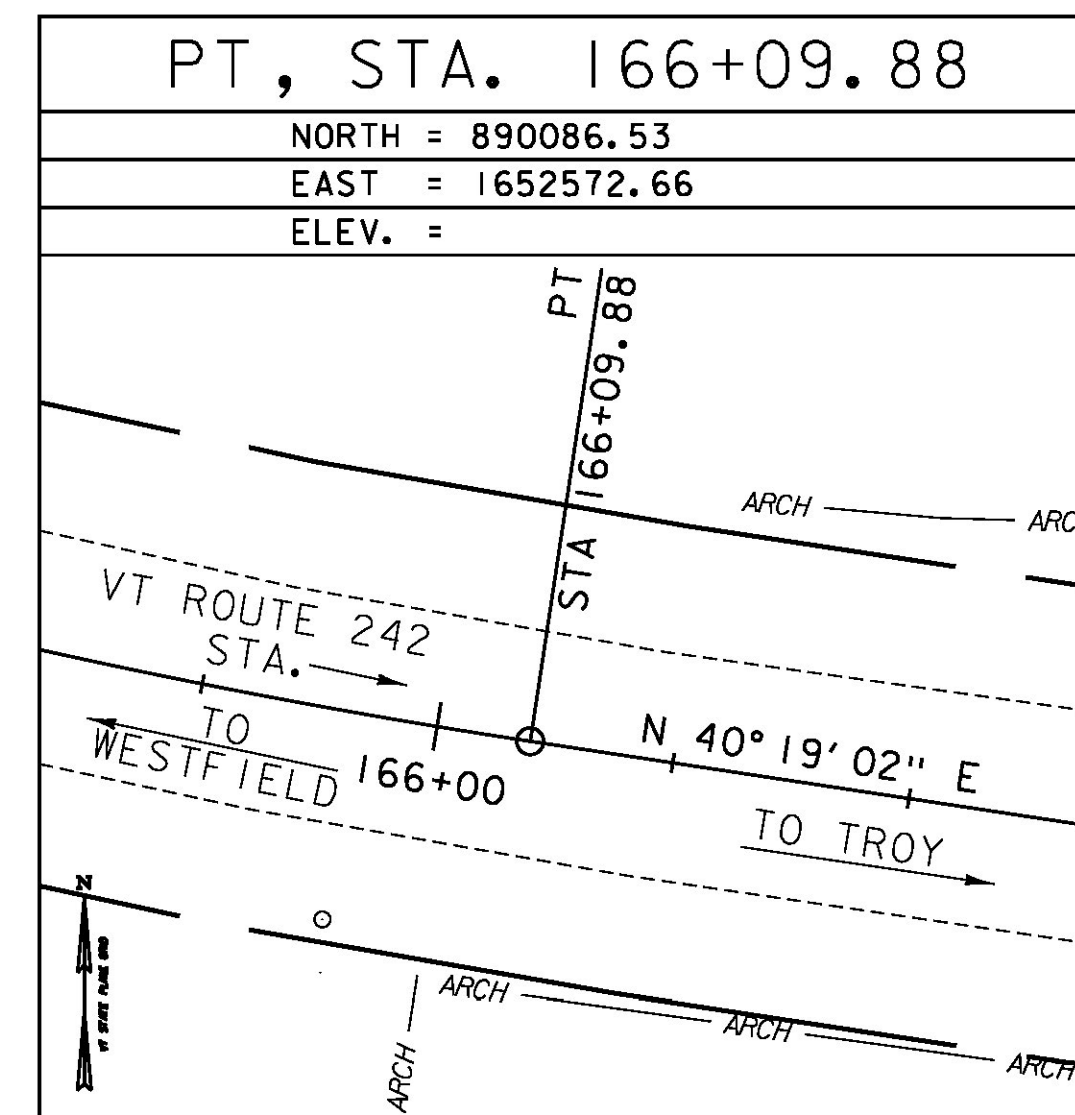
TO REACH FROM THE INTERSECTION OF VT ROUTE 242 AND VT ROUTE 101 IN TROY GO WEST ALONG VT ROUTE 242 FOR 2.3 MI (3.7 KM) TO THE SITE OF THE MARK ON THE LEFT.

THE MARK IS A FENO DISK SET IN THE TOP OF THE EAST SIDE OF THE CONCRETE COPING FOR A SEWER MANHOLE.

IT IS 6.5 M (21.3 FT) SOUTH OF AND 0.1 M (0.3 FT) LOWER THAN THE CENTERLINE OF VT ROUTE 242, 27.1 M (88.9 FT) EAST-SOUTHEAST OF AND ACROSS THE ROAD FROM POLE NO 10B/16S AND 20.6 M (67.6 FT) EAST-SOUTHEAST OF AND ACROSS THE ROAD FROM ANOTHER SEWER MANHOLE.

*MAIN TRAVERSE COMPLETED 10/09/2010 FOR WESTFIELD - JAY - TROY STP2903(1) [09C362] BY R.GILMAN P.C. & P.WINTERS & C.CYR

ALIGNMENT TIES



DATUM

VERTICAL NAVD 88

HORIZONTAL NAD 83 (2007)

ADJUSTMENT COMPASS



PROJECT NAME: JAY

PROJECT NUMBER: BHF 0278(3)

FILE NAME: z12c154t1.dgn

PROJECT LEADER: M. CHENETTE

DESIGNED BY: VTRANS

TIE SHEET

PLOT DATE: 8/16/2016

DRAWN BY: VTRANS

CHECKED BY: VTRANS/STANTEC

SHEET 11 OF 72