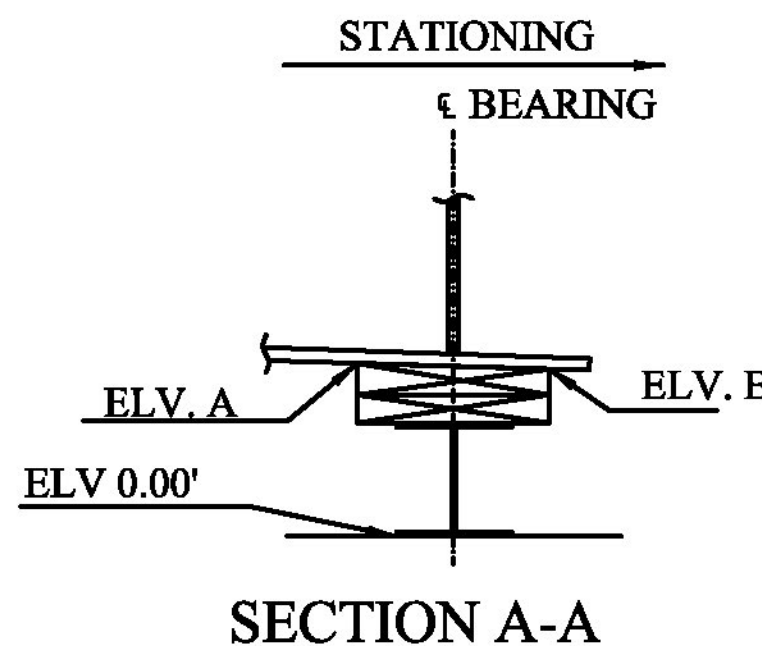
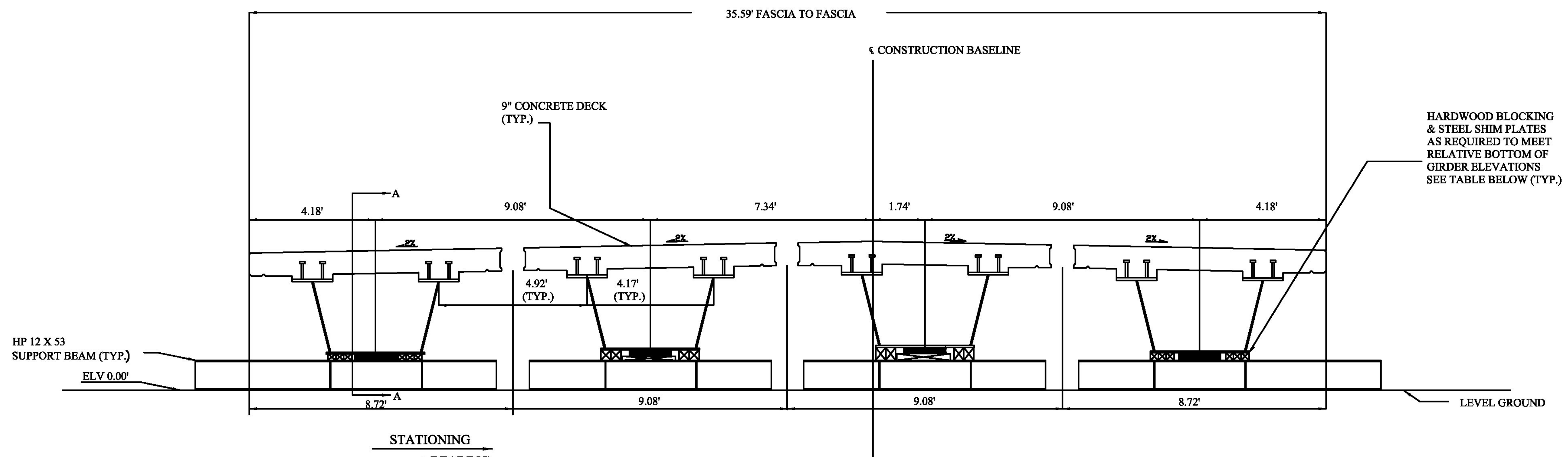


**BRIDGE #9 TYPICAL CROSS SECTION &
RELATIVE BEARING ELEVATIONS**



	ABUTMENT 1		ABUTMENT 2	
	ELV. A	ELV. B	ELV. A	ELV. B
PBU 1	1.66'	1.69'	2.46'	2.46'
PBU 2	1.70'	1.73'	2.59'	2.59'
PBU 3	1.66'	1.69'	2.65'	2.66'
PBU 4	1.31'	1.34'	2.41'	2.42'

HARDWOOD BLOCKING & STEEL SHIM PLATES AS REQUIRED TO MEET RELATIVE BOTTOM OF GIRDER ELEVATIONS SEE TABLE BELOW (TYP.)

Vermont Agency of Transportation

RECEIVED

CK'D BY TYLin OK'D BY TYLin

April 5, 2017

RESUBMIT No Approved

BY Kristin Higgins DATE 4/7/2017

T.Y. LIN INTERNATIONAL
THE STAMPED DOCUMENTS ARE HEREBY:
 APPROVED
 APPROVED AS NOTED
 REVISE AND RESUBMIT
SEE TRANSMITTAL FOR ADDITIONAL INFORMATION AS APPLICABLE.
THIS REVIEW IS FOR GENERAL CONFORMANCE WITH DESIGN CONCEPT ONLY. ANY DEVIATION FROM THE PLANS OR SPECIFICATIONS NOT CLEARLY NOTED BY THE CONTRACTOR HAS NOT BEEN REVIEWED. REVIEW BY THE ENGINEER SHALL NOT RELIEVE THE CONTRACTOR OF THE CONTRACTUAL RESPONSIBILITY FOR ANY ERRORS OR DEVIATION FROM THE CONTRACT REQUIREMENTS.
JOSH OLUND REVIEWER DATE April 5, 2017

CPM CONSTRUCTORS
30 ROBERT STREET
P.O. BOX 9
FERRISBURGH, VT 05753-0009
(802) 886-4000 FAX (802) 886-4000



PROJECT INFORMATION	
JOB NUMBER:	17-040
DATE:	04/05/2017
SCALE:	N.P.S.
DESIGNED BY:	TYLIN
CHECKED BY:	TYLIN
APPROVED BY:	TYLIN
DATE:	04/05/2017
SCALE:	N.P.S.

**TEMP. SUPPORT
DETAILS & ELEVATIONS**
BHF 0169(9)
CHELSEA, VERMONT

SHEET NUMBER
9
of 11