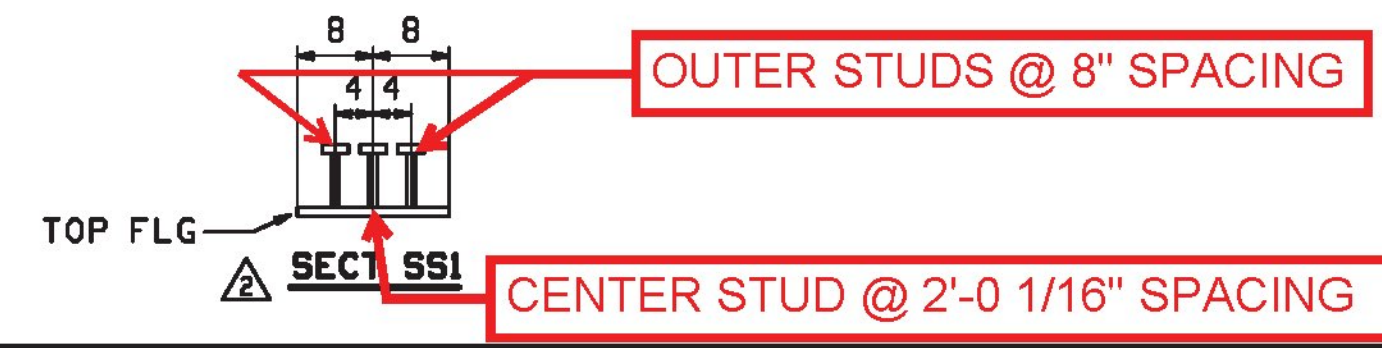
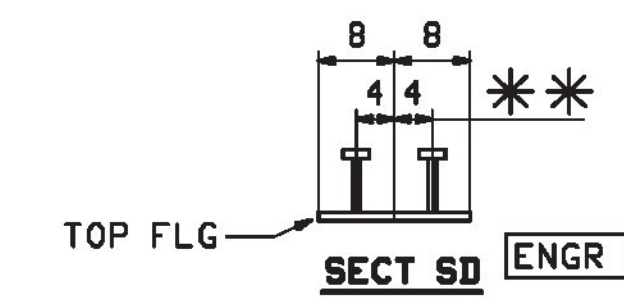


**Vermont Agency of Transportation**  
**RECEIVED**  
 CK'D BY TYLin, R. Foster OK'D BY TYLin, R. Foster  
 April 17, 2017  
 RESUBMIT No Approved AsNoted  
 BY Kristin Higgins DATE 4/20/2017

**T.Y. LIN INTERNATIONAL**  
 THE STAMPED DOCUMENTS ARE HEREBY:  
 \_\_\_\_\_ APPROVED  
 \_\_\_\_\_ X APPROVED AS NOTED  
 \_\_\_\_\_ REVISE AND RESUBMIT  
 SEE TRANSMITTAL FOR ADDITIONAL INFORMATION AS APPLICABLE.  
 THIS REVIEW IS FOR GENERAL CONFORMANCE WITH DESIGN CONCEPT ONLY. ANY DEVIATION FROM THE PLANS OR SPECIFICATIONS NOT CLEARLY NOTED BY THE CONTRACTOR HAS NOT BEEN REVIEWED. REVIEW BY THE ENGINEER SHALL NOT RELIEVE THE CONTRACTOR OF THE CONTRACTUAL RESPONSIBILITY FOR ANY ERRORS OR DEVIATION FROM THE CONTRACT REQUIREMENTS.  
 \_\_\_\_\_ JOSH OLUND REVIEWER DATE April 19, 2017

- \* SECURE MESH SCREEN W/ APPROVED ADHESIVE OR EPOXY ON INSIDE OF TUB.
- \*\* 7/8 x 7" AUTO-END WELD SHEAR STUDS. ADJUST AS REQUIRED TO MAINTAIN 2" CLEARANCE FROM LAT & STRUT BOLTS.
- △ SHOP TO COORDINATE STUDS WITH REBAR PLACEMENT.



△ \*\*\* BTM OF BTM FLG INCLUDING SOLE PL TO BE FULLY PAINTED

OUTER STUDS @ 8" SPACING

CENTER STUD @ 2'-0 1/16" SPACING

REV.	DATE	REMARKS	DMN	CHK	APVL	SHOP
△	04/17	REV STUD, ADDED LUGS EXTRA 1	RRL	WJL		
△	02/15	REVISED PER APPROVALS	RRL	WJL		
0						

MATERIAL: M270-50 SURFACE PREP. & PAINT: SEE GN1 HOLES: 5/16" UN SHOP BOLTS: AS NOTED

DESCRIPTION: BOX GIRDER ELEVATION 1G1, 1G2, 1G3 & 1G4		DRAWN: RRL DATE: 12/22	
STRUCTURE: VT ROUTE 110 OVER 1ST BRANCH WHITE RIVER BRIDGE NO. 9		CHKD: WJL DATE: 01/06/17	
LOCATION: TOWN OF CHELSEA, ORANGE COUNTY, VT.		JOB NO. 696 DWG NO. 1CD	
PROJ NO. BHF 0169(9)		REV. △	
CUSTOMER: CPM CONSTRUCTORS			

**CASCO BAY STEEL STRUCTURES, INC.**  
 1 WALLACE AVE. PHONE (207) 780-6722  
 SOUTH PORTLAND, ME 04106 FAX. (207) 780-6726

15: 1/2" Sp. 18. 800 228282 06 1/2" Sp. 18. 800 228282 06 1/2" Sp. 18. 800 228282 06