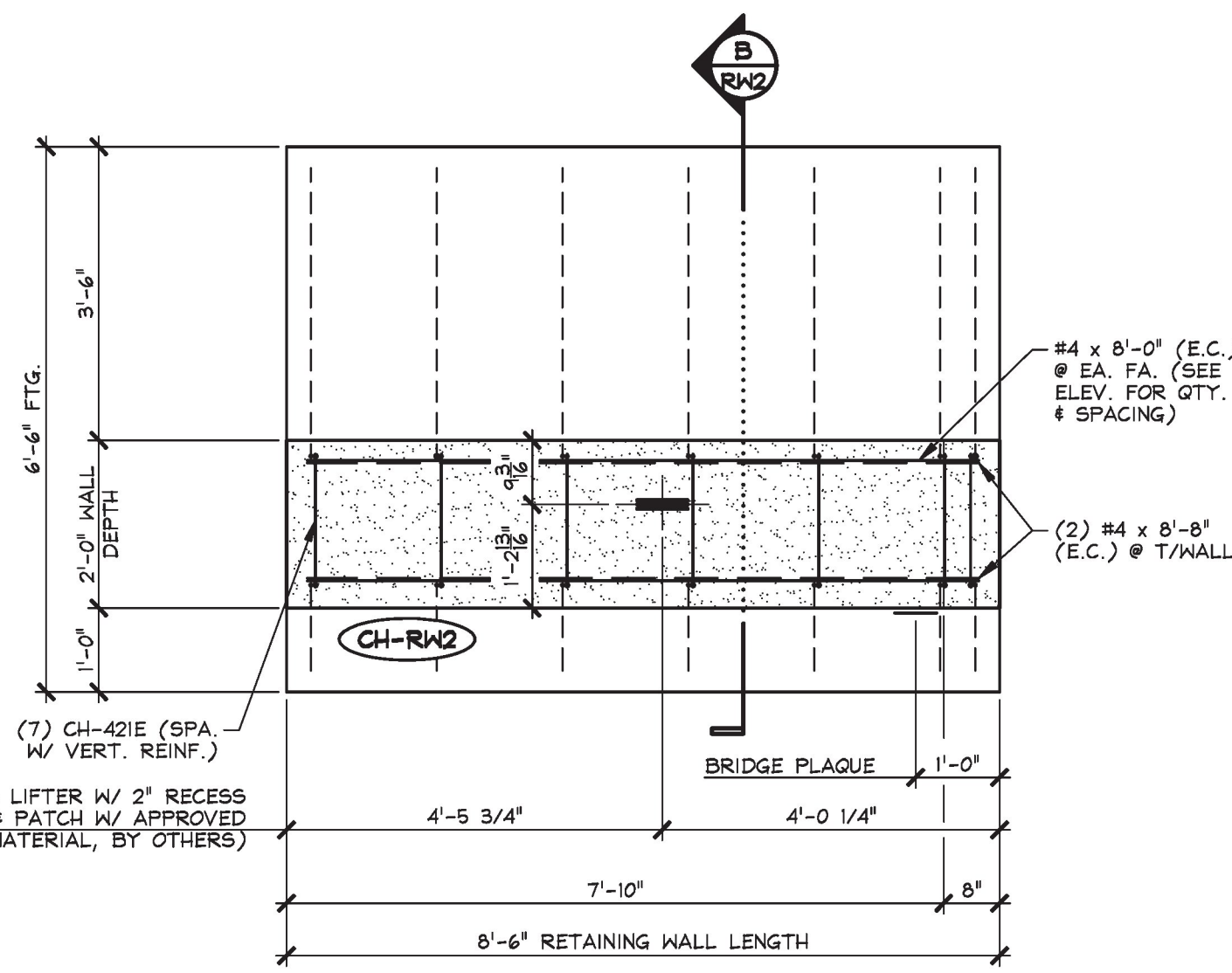
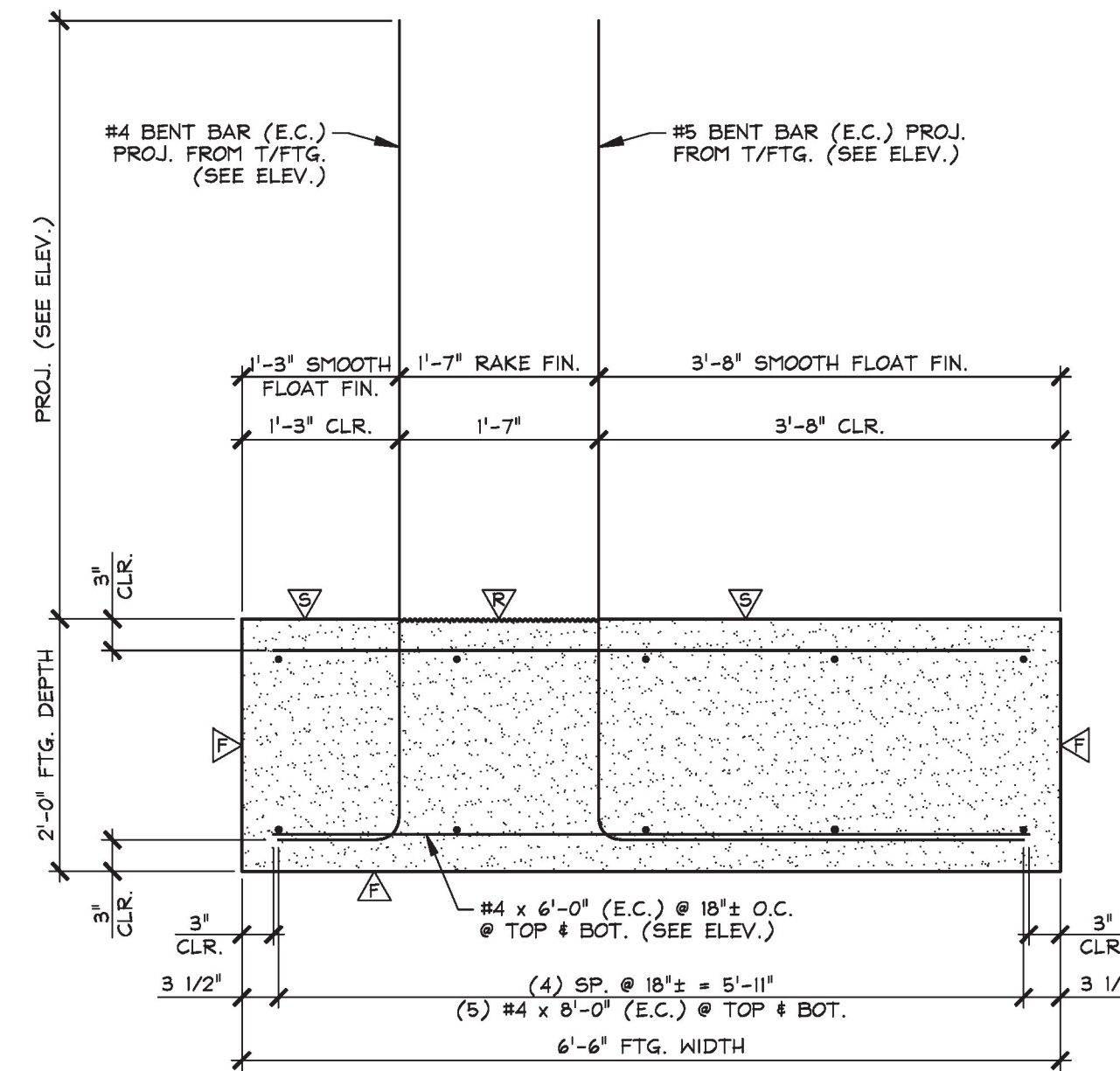


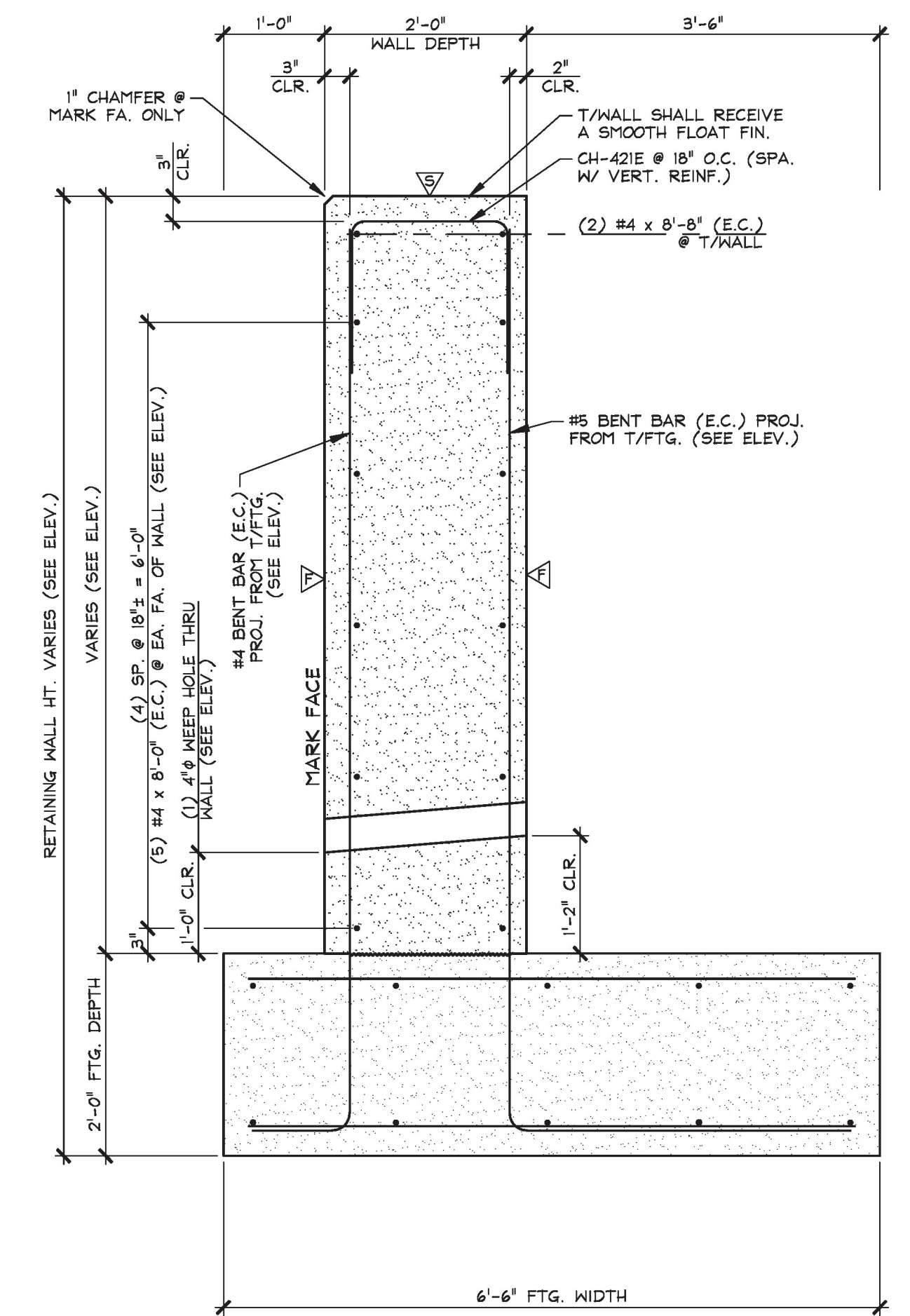
1 RETAINING WALL PLAN RW2 (FIRST POUR) 1/2" = 1'-0"



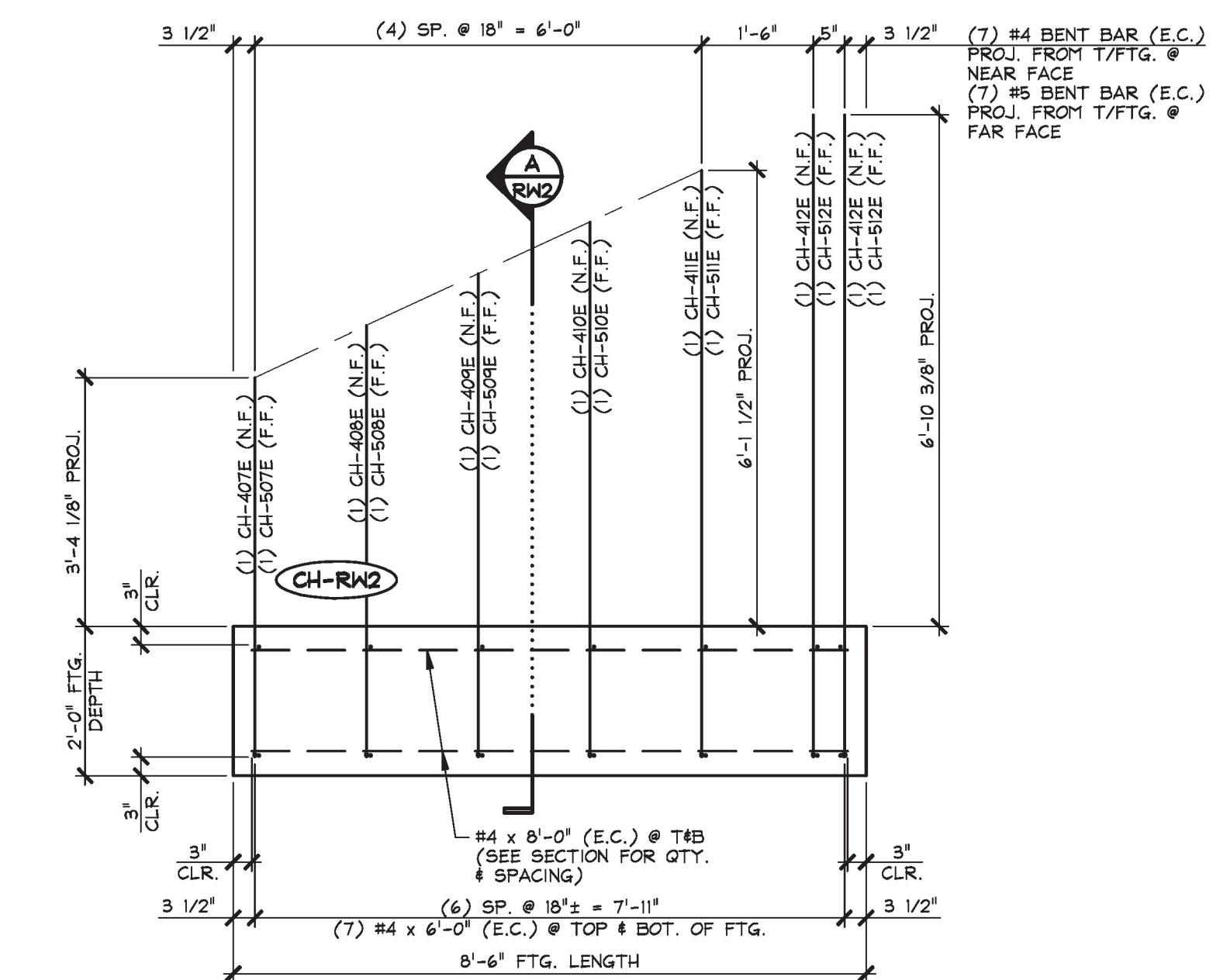
3 RETAINING WALL PLAN RW2 (SECOND POUR) 1/2" = 1'-0"



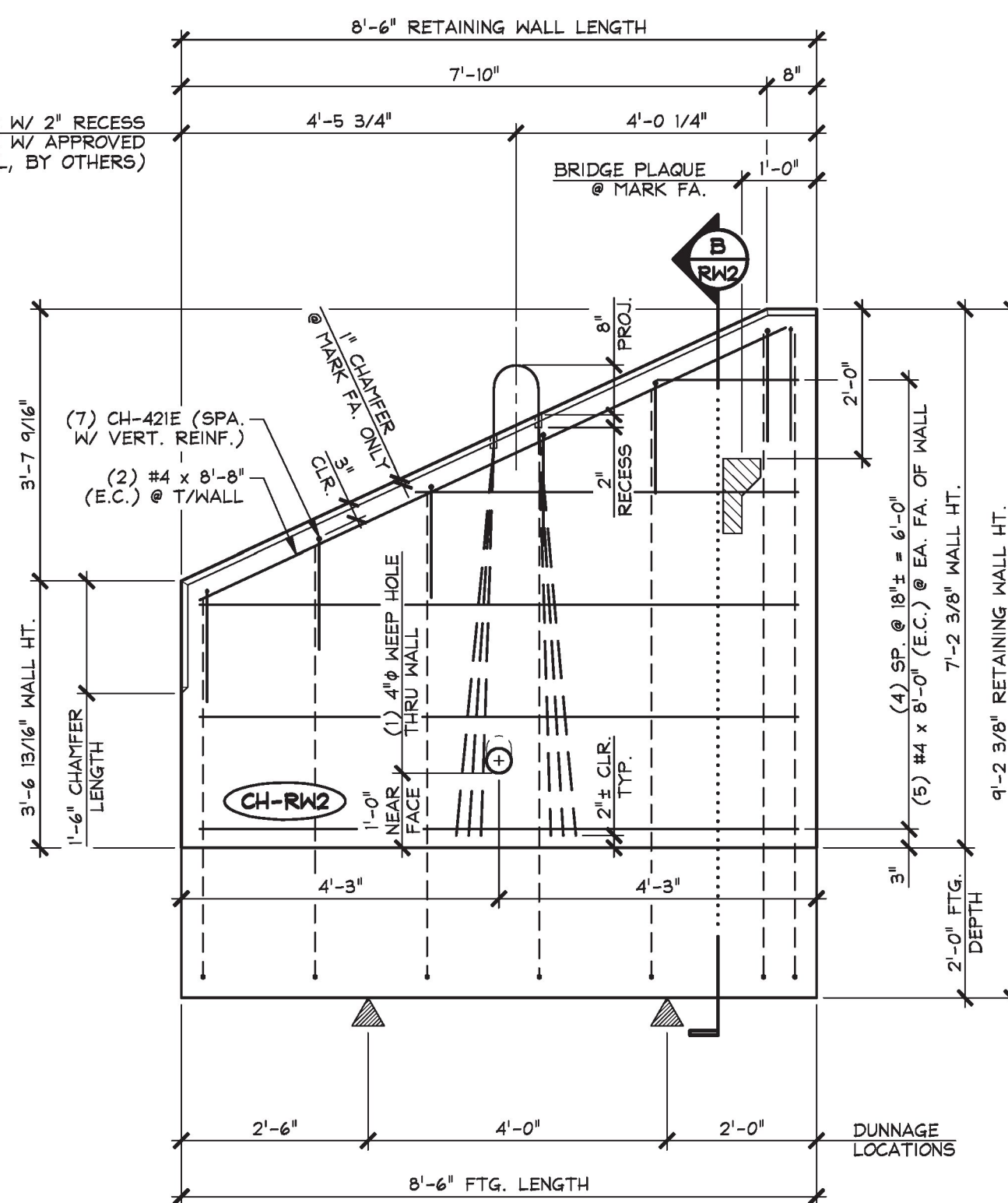
A RETAINING WALL SECTION RW2 (FIRST POUR) 3/4" = 1'-0"



B RETAINING WALL SECTION RW2 (SECOND POUR) 3/4" = 1'-0"



2 RETAINING WALL ELEVATION RW2 (FIRST POUR) 1/2" = 1'-0"



4 RETAINING WALL ELEVATION RW2 (SECOND POUR) 1/2" = 1'-0"

- △ DENOTES FORM FINISH
- ▽ DENOTES SMOOTH FLOAT FINISH
- ▽ DENOTES RAKE FINISH ROUGHENED TO 1/4" AMP.

SHOP NOTE:
 28-DAY STRENGTH = 5,000 PSI
 HANDLING STRENGTH = 3,500 PSI
 DESIGN MIX #445M1SCC

T.Y. LIN INTERNATIONAL
 THE STAMPED DOCUMENTS ARE HEREBY:
 X APPROVED
 APPROVED AS NOTED
 REVISE AND RESUBMIT
 SEE TRANSMITTAL FOR ADDITIONAL INFORMATION AS APPLICABLE.
 THIS REVIEW IS FOR GENERAL CONFORMANCE WITH DESIGN CONCEPT ONLY. ANY DEVIATION FROM THE PLANS OR SPECIFICATIONS NOT CLEARLY NOTED BY THE CONTRACTOR HAS NOT BEEN REVIEWED. REVIEW BY THE ENGINEER SHALL NOT RELIEVE THE CONTRACTOR OF THE CONTRACTUAL RESPONSIBILITY FOR ANY ERRORS OR DEVIATION FROM THE CONTRACT REQUIREMENTS.
 JOSH OLLUND REVIEWER March 29, 2017 DATE

MARK: CH-RW2	QTY.: 1	WT.: 1 ST POUR = 8.29 T 2 ND POUR = 7.05 T TOTAL = 15.34 T	VOL.: 1 ST POUR = 4.09 cy 2 ND POUR = 3.48 cy TOTAL = 7.57 cy				
MATERIAL LIST / RETAINING WALL							
ITEM	MARK	DESCRIPTION	QTY.	ITEM	MARK	DESCRIPTION	QTY.
1	CH-407E	#4 BENT BAR (EPOXY COATED)	1	11	CH-507E	#5 BENT BAR (EPOXY COATED)	1
2	CH-408E	#4 BENT BAR (EPOXY COATED)	1	12	CH-508E	#5 BENT BAR (EPOXY COATED)	1
3	CH-409E	#4 BENT BAR (EPOXY COATED)	1	13	CH-509E	#5 BENT BAR (EPOXY COATED)	1
4	CH-410E	#4 BENT BAR (EPOXY COATED)	1	14	CH-510E	#5 BENT BAR (EPOXY COATED)	1
5	CH-411E	#4 BENT BAR (EPOXY COATED)	1	15	CH-511E	#5 BENT BAR (EPOXY COATED)	1
6	CH-412E	#4 BENT BAR (EPOXY COATED)	2	16	CH-512E	#5 BENT BAR (EPOXY COATED)	2
7	CH-421E	#4 BENT BAR (EPOXY COATED)	7	17			
8		#4 x 6'-0" (EPOXY COATED)	14	18	MK-CH5	SET OF (3) 0.60" STRAND LIFTING LOOPS	1
9		#4 x 8'-0" (EPOXY COATED)	20	19		BRIDGE PLAQUE (SUPPLIED BY OTHERS)	1
10		#4 x 8'-0" (EPOXY COATED)	2	20			

APPROVAL STAMP:
 Vermont Agency of Transportation
RECEIVED
 CK'D BY TYLin OK'D BY TYLin
 March 28, 2017
 RESUBMIT No Approved
 By Kristin Higgins DATE 3/31/2017

J.P. CARRARA & SONS INC.
 Precast & Prestress Manufacturer
 2464 CASE STR., WOODBURY, VERMONT 05753 Phone: (802)388-6361 Fax: (802)388-9010
 STATE OF VERMONT AGENCY OF TRANSPORTATION
 COUNTY OF ORANGE
 TOWN OF CHELSEA
 VT ROUTE 110, RURAL MAJOR COLLECTOR
 BRIDGE NO.: 9 PROJECT NO.: BHF 0169(9)
 PRECAST RETAINING WALL DETAILS

CPM CONSTRUCTORS
 CONTRACTOR
 FREEPORT, MAINE
 DATE: FEB. 28, 2017
 SCALE: NOTED
 CHKD: - DFTM: B.L.
 JOB NO: 23505-016
 DWG. NO: RW2
 BRIDGE 9

3-27-17 REVISED PER RE-DESIGN