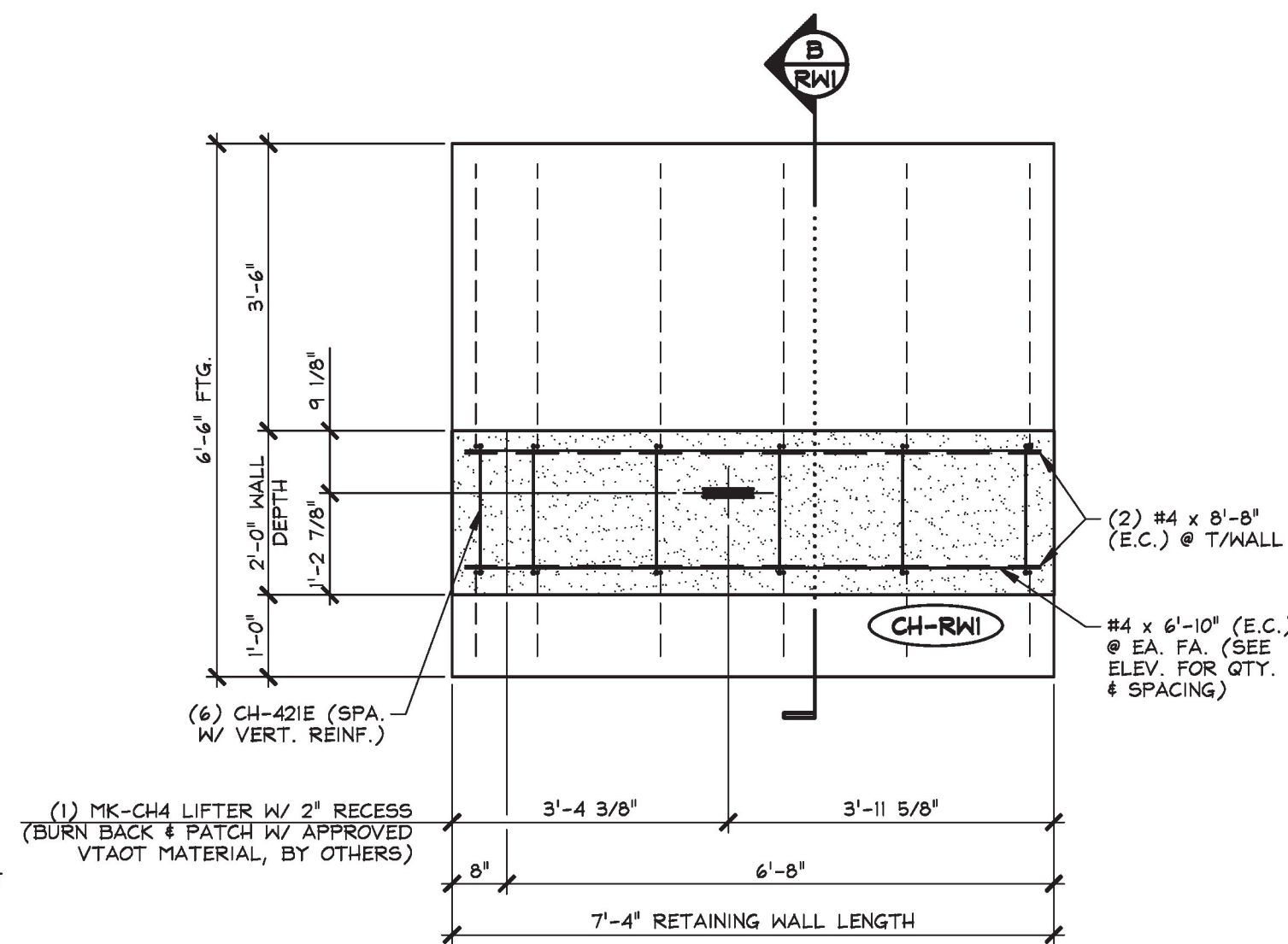
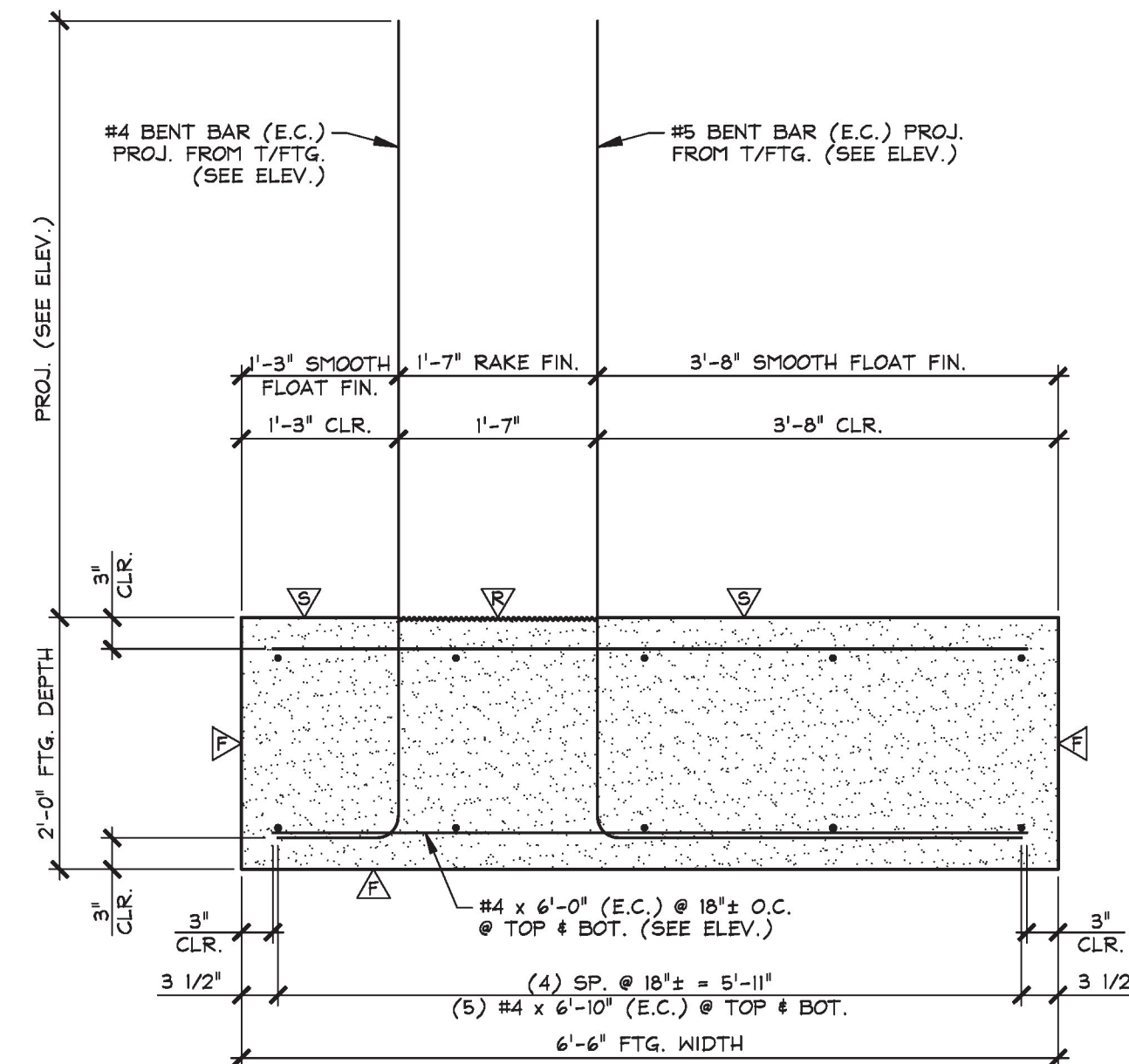


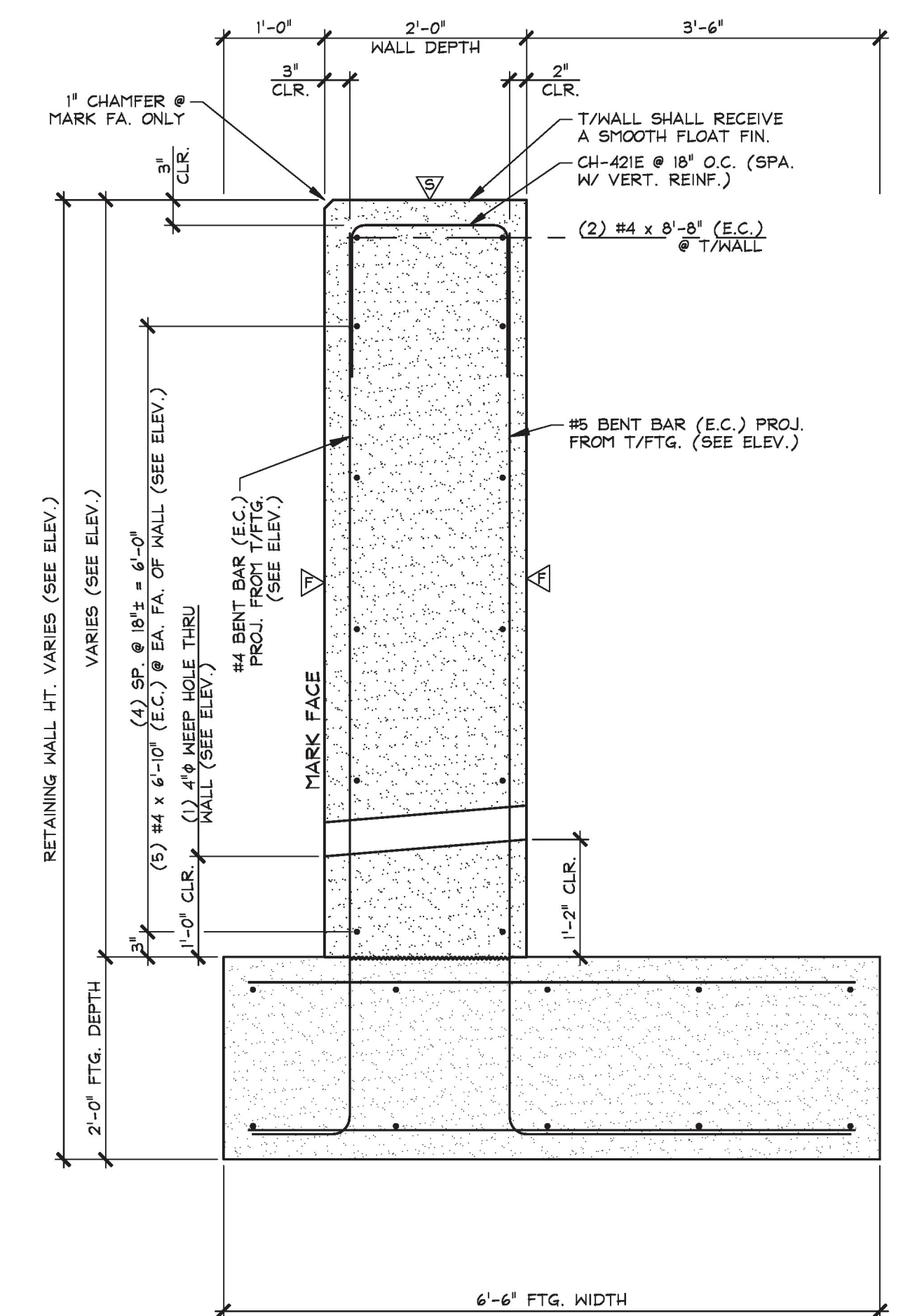
1 RETAINING WALL PLAN
RW1 (FIRST POUR) 1/2" = 1'-0"



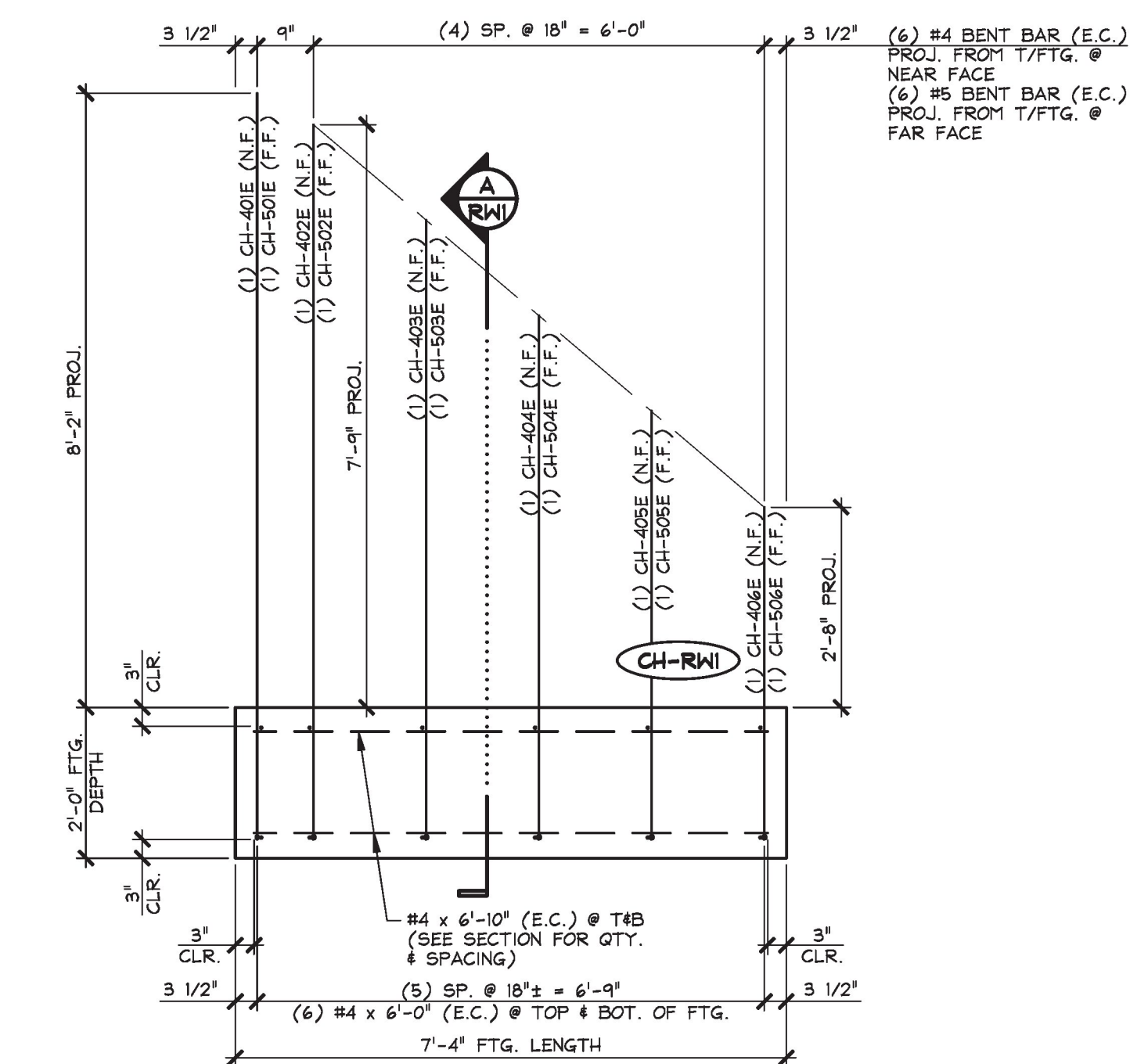
3 RETAINING WALL PLAN
RW1 (SECOND POUR) 1/2" = 1'-0"



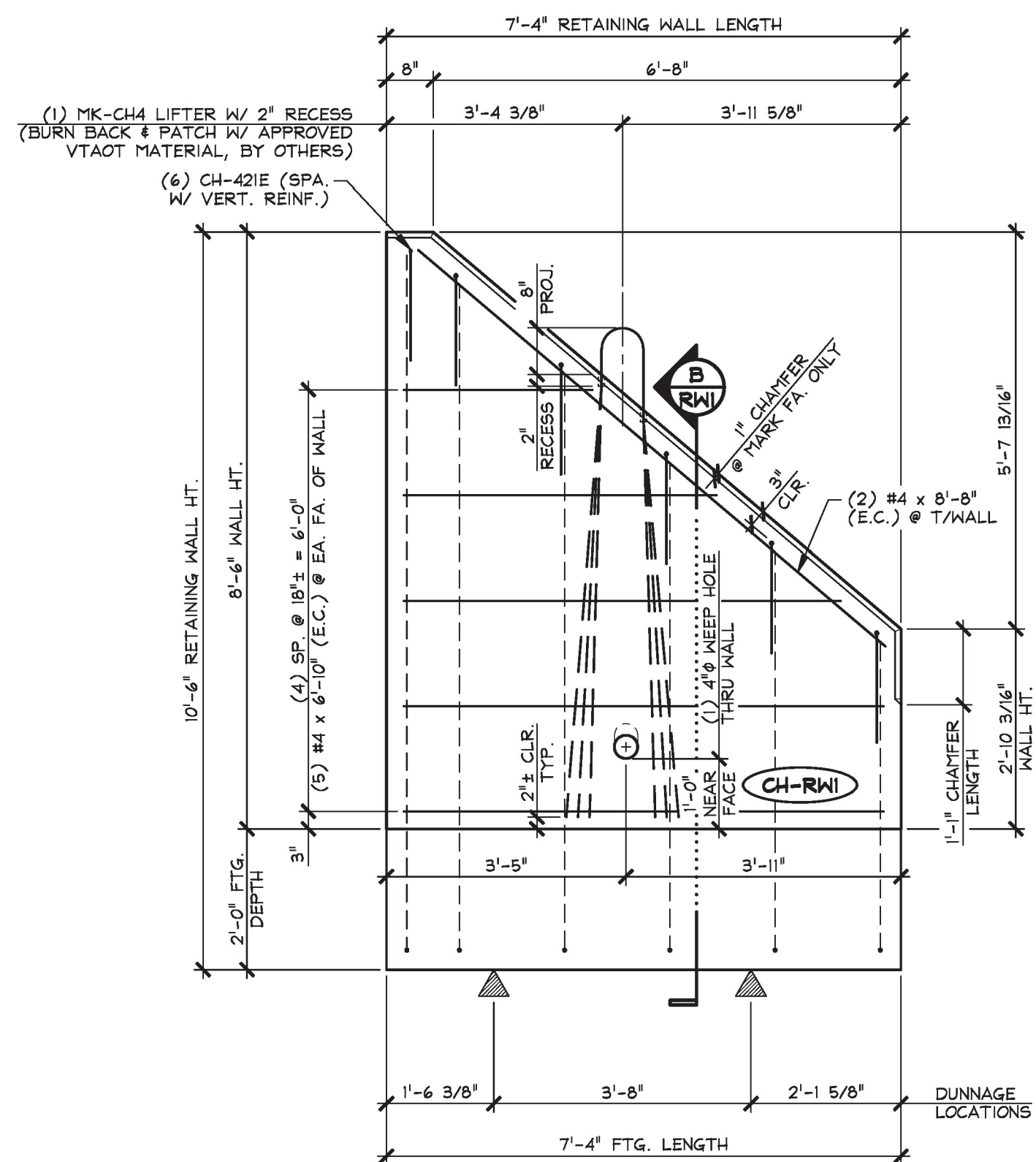
A RETAINING WALL SECTION
RW1 (FIRST POUR) 3/4" = 1'-0"



B RETAINING WALL SECTION
RW1 (SECOND POUR) 3/4" = 1'-0"



2 RETAINING WALL ELEVATION
RW1 (FIRST POUR) 1/2" = 1'-0"



4 RETAINING WALL ELEVATION
RW1 (SECOND POUR) 1/2" = 1'-0"

T.Y. LIN INTERNATIONAL
THE STAMPED DOCUMENTS ARE HEREBY:
X APPROVED
— APPROVED AS NOTED
— REVISE AND RESUBMIT
SEE TRANSMITTAL FOR ADDITIONAL INFORMATION AS APPLICABLE.
THIS REVIEW IS FOR GENERAL CONFORMANCE WITH DESIGN CONCEPT ONLY. ANY DEVIATION FROM THE PLANS OR SPECIFICATIONS NOT CLEARLY NOTED BY THE CONTRACTOR HAS NOT BEEN REVIEWED. REVIEW BY THE ENGINEER SHALL NOT RELIEVE THE CONTRACTOR OF THE CONTRACTUAL RESPONSIBILITY FOR ANY ERRORS OR DEVIATION FROM THE CONTRACT REQUIREMENTS.
JOSH OLUND REVIEWER
March 29, 2017 DATE

△ DENOTES FORM FINISH
▽ DENOTES SMOOTH FLOAT FINISH
▽ DENOTES RAKE FINISH ROUGHENED TO 1/4" AMP.
SHOP NOTE:
28-DAY STRENGTH = 5,000 PSI
HANDLING STRENGTH = 3,500 PSI
DESIGN MIX #445M5CC

| MARK: | CH-RW1 | QTY.: | 1 | WT.: | 1 ST POUR = 7.15 T 2 ND POUR = 6.53 T TOTAL = 13.68 T | VOL.: | 1 ST POUR = 3.53 cy 2 ND POUR = 3.22 cy TOTAL = 6.75 cy |
|--------------------------------|---------|----------------------------|------|------|---|---------------------------------------|---|
| MATERIAL LIST / RETAINING WALL | | | | | | | |
| ITEM | MARK | DESCRIPTION | QTY. | ITEM | MARK | DESCRIPTION | QTY. |
| 1 | CH-401E | #4 BENT BAR (EPOXY COATED) | 1 | 11 | CH-501E | #5 BENT BAR (EPOXY COATED) | 1 |
| 2 | CH-402E | #4 BENT BAR (EPOXY COATED) | 1 | 12 | CH-502E | #5 BENT BAR (EPOXY COATED) | 1 |
| 3 | CH-403E | #4 BENT BAR (EPOXY COATED) | 1 | 13 | CH-503E | #5 BENT BAR (EPOXY COATED) | 1 |
| 4 | CH-404E | #4 BENT BAR (EPOXY COATED) | 1 | 14 | CH-504E | #5 BENT BAR (EPOXY COATED) | 1 |
| 5 | CH-405E | #4 BENT BAR (EPOXY COATED) | 1 | 15 | CH-505E | #5 BENT BAR (EPOXY COATED) | 1 |
| 6 | CH-406E | #4 BENT BAR (EPOXY COATED) | 1 | 16 | CH-506E | #5 BENT BAR (EPOXY COATED) | 1 |
| 7 | CH-421E | #4 BENT BAR (EPOXY COATED) | 6 | 17 | | | |
| 8 | | #4 x 6'-0" (EPOXY COATED) | 12 | 18 | MK-CH4 | SET OF (3) 0.60" STRAND LIFTING LOOPS | 1 |
| 9 | | #4 x 6'-10" (EPOXY COATED) | 20 | 19 | | | |
| 10 | | #4 x 8'-8" (EPOXY COATED) | 2 | 20 | | | |

APPROVAL STAMP:
Vermont Agency of Transportation
RECEIVED
OK'D BY TYLin OK'D BY TYLin
March 28, 2017
RESUBMIT No Approved
BY Kristin Higgins DATE 3/31/2017

J.P. CARRARA & SONS INC.
Precast & Prestress Manufacturer
2464 CASE STR., MIDDLEBURY, VERMONT 05753 Phone: (802)388-6361 Fax: (802)388-9010
STATE OF VERMONT AGENCY OF TRANSPORTATION
COUNTY OF ORANGE
TOWN OF CHelsea
VT ROUTE 110, RURAL MAJOR COLLECTOR
BRIDGE NO.: 9 PROJECT NO.: BHF 0169(9)

CPM CONSTRUCTORS
CONTRACTOR
FREEPORT, MAINE
DATE: FEB. 28, 2017
SCALE: NOTED
CHKD: - DFTM: B.L.
JOB NO: 23505-016
DWG. NO: RW1
BRIDGE 9