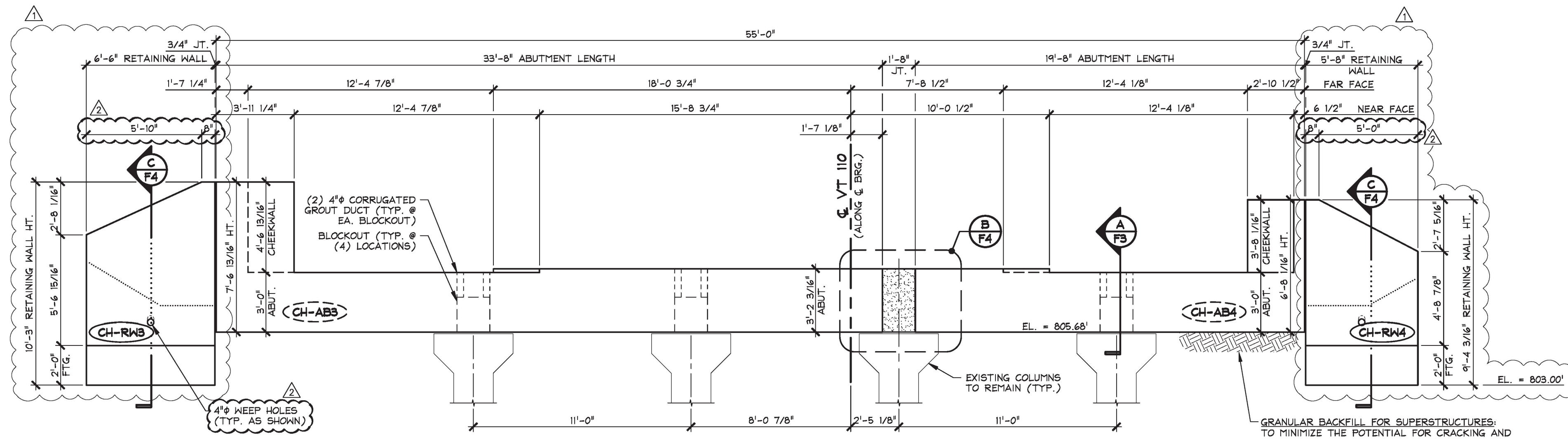


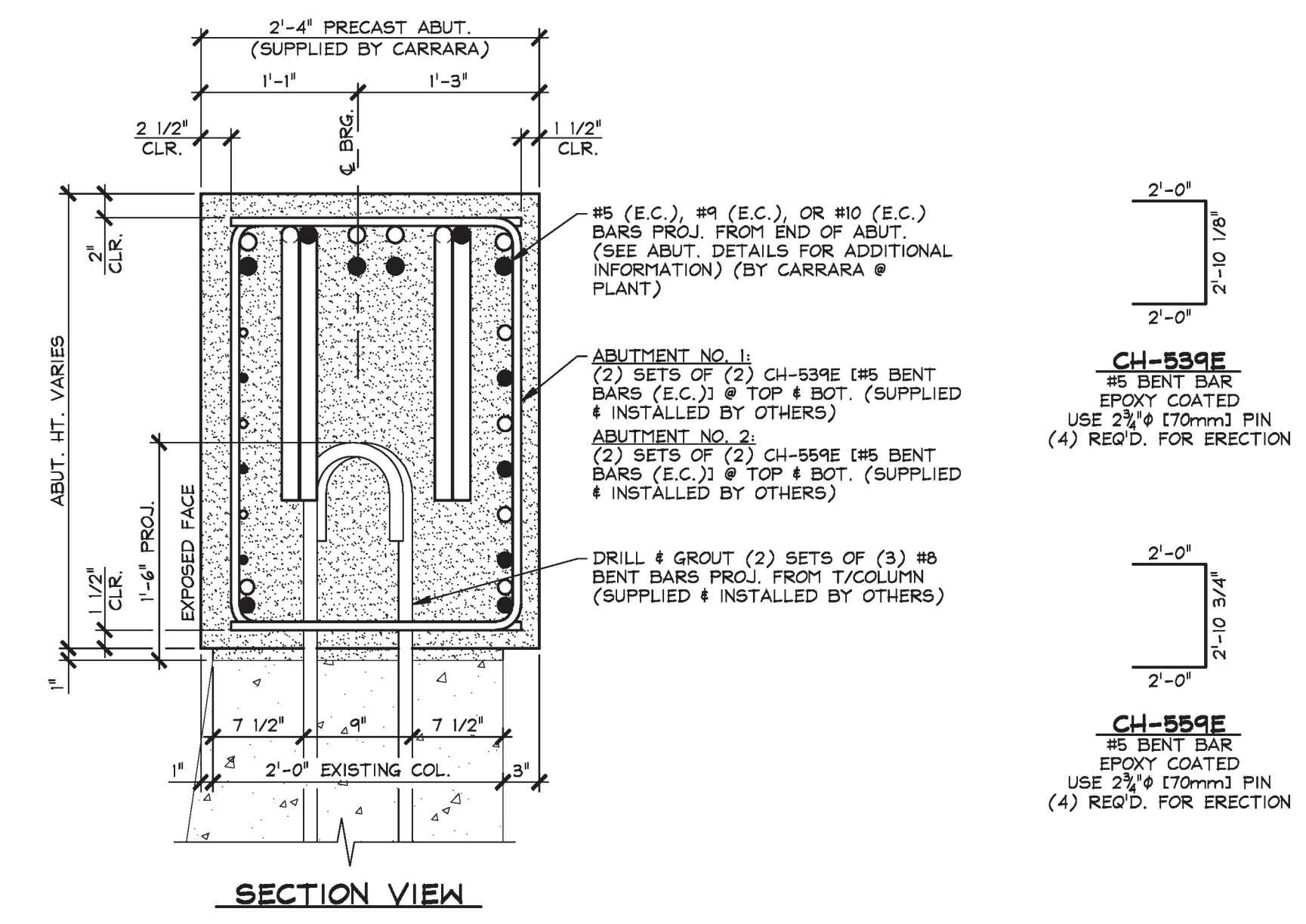
ELEVATION VIEW



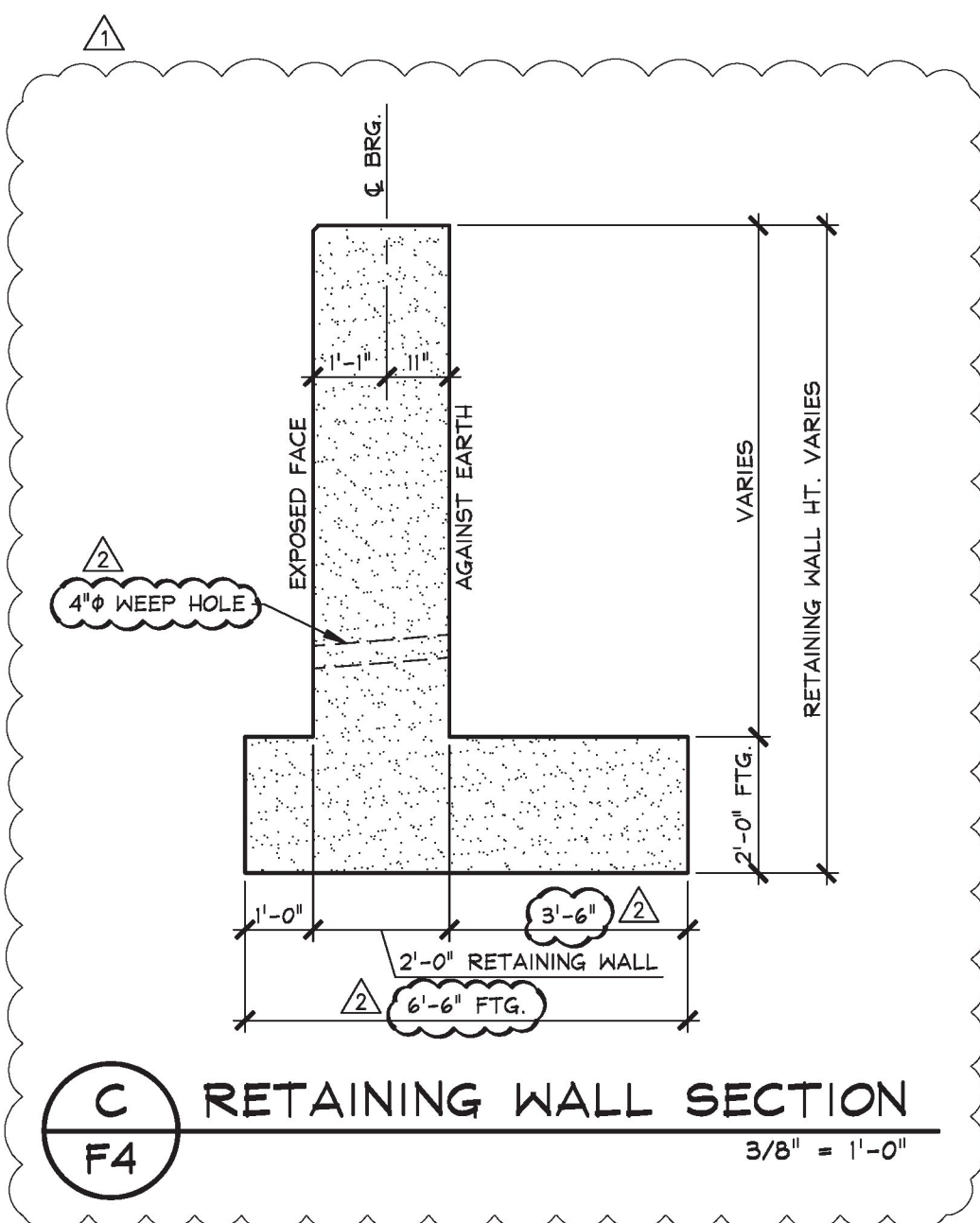
2 PRECAST ABUTMENT NO. 2 ELEVATION
1/4" = 1'-0"

ERECTION NOTE:
PRECAST DETAILING REQUIRES INSTALLATION OF 'CH-ABS' PRIOR TO 'CH-AB4'

GRANULAR BACKFILL FOR SUPERSTRUCTURES TO MINIMIZE THE POTENTIAL FOR CRACKING AND OVERTURNING OF THE PRECAST ABUTMENT CAP DURING CONSTRUCTION. GRANULAR BACKFILL FOR STRUCTURES SHALL BE PLACED AND COMPACTED PER VTAOT SPECIFICATIONS TO THE BOTTOM OF ABUTMENT CAP ELEVATION PRIOR TO SETTING THE PRECAST ABUTMENT CAP.



B CONSTRUCTION JOINT DETAILS
1" = 1'-0"



C RETAINING WALL SECTION
3/8" = 1'-0"

T.Y. LIN INTERNATIONAL
THE STAMPED DOCUMENTS ARE HEREBY:

X APPROVED
APPROVED AS NOTED
REVISE AND RESUBMIT

SEE TRANSMITTAL FOR ADDITIONAL INFORMATION AS APPLICABLE.

THIS REVIEW IS FOR GENERAL CONFORMANCE WITH DESIGN CONCEPT ONLY. ANY DEVIATION FROM THE PLANS OR SPECIFICATIONS NOT CLEARLY NOTED BY THE CONTRACTOR HAS NOT BEEN REVIEWED. REVIEW BY THE ENGINEER SHALL NOT RELIEVE THE CONTRACTOR OF THE CONTRACTUAL RESPONSIBILITY FOR ANY ERRORS OR DEVIATION FROM THE CONTRACT REQUIREMENTS.

JOSH OLUND
REVIEWER
March 29, 2017
DATE

- 3-27-17 REVISED AS NOTED
- 2-26-17 ADD RETAINING WALLS

APPROVAL STAMP:	J.P. CARRARA & SONS INC. Precast & Prestress Manufacturer 2464 OASE STR., MIDDLEBURY, VERMONT 05753 Phone: (802)388-6361 Fax: (802)388-9010	CPM CONSTRUCTORS CONTRACTOR FREEPORT, MAINE
Vermont Agency of Transportation RECEIVED CK'D BY TYLin OK'D BY TYLin March 28, 2017	STATE OF VERMONT AGENCY OF TRANSPORTATION COUNTY OF ORANGE	DATE: NOV. 29, 2016 SCALE: NOTED
RESUBMIT No Approved BY Kristin Higgins DATE 3/31/2017	TOWN OF CHelsea VT ROUTE 110, RURAL MAJOR COLLECTOR BRIDGE NO.: 9 PROJECT NO.: BHF 0169(9)	CHKD: M.W. DFTM: B.L. JOB NO: 23505-016
	PLAN, ELEVATION & CONSTRUCTION JOINT DETAILS	DWG. NO: F4 BRIDGE 9