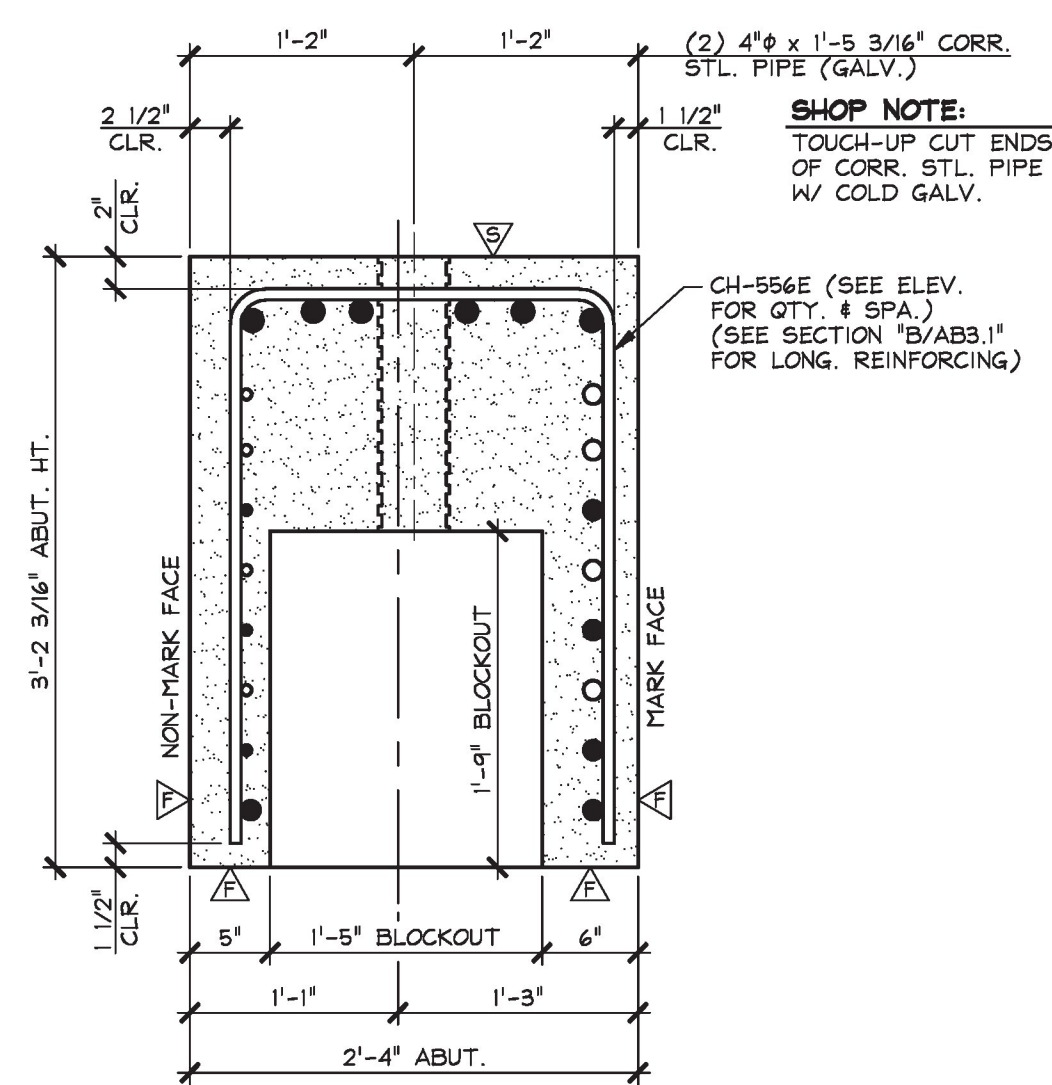
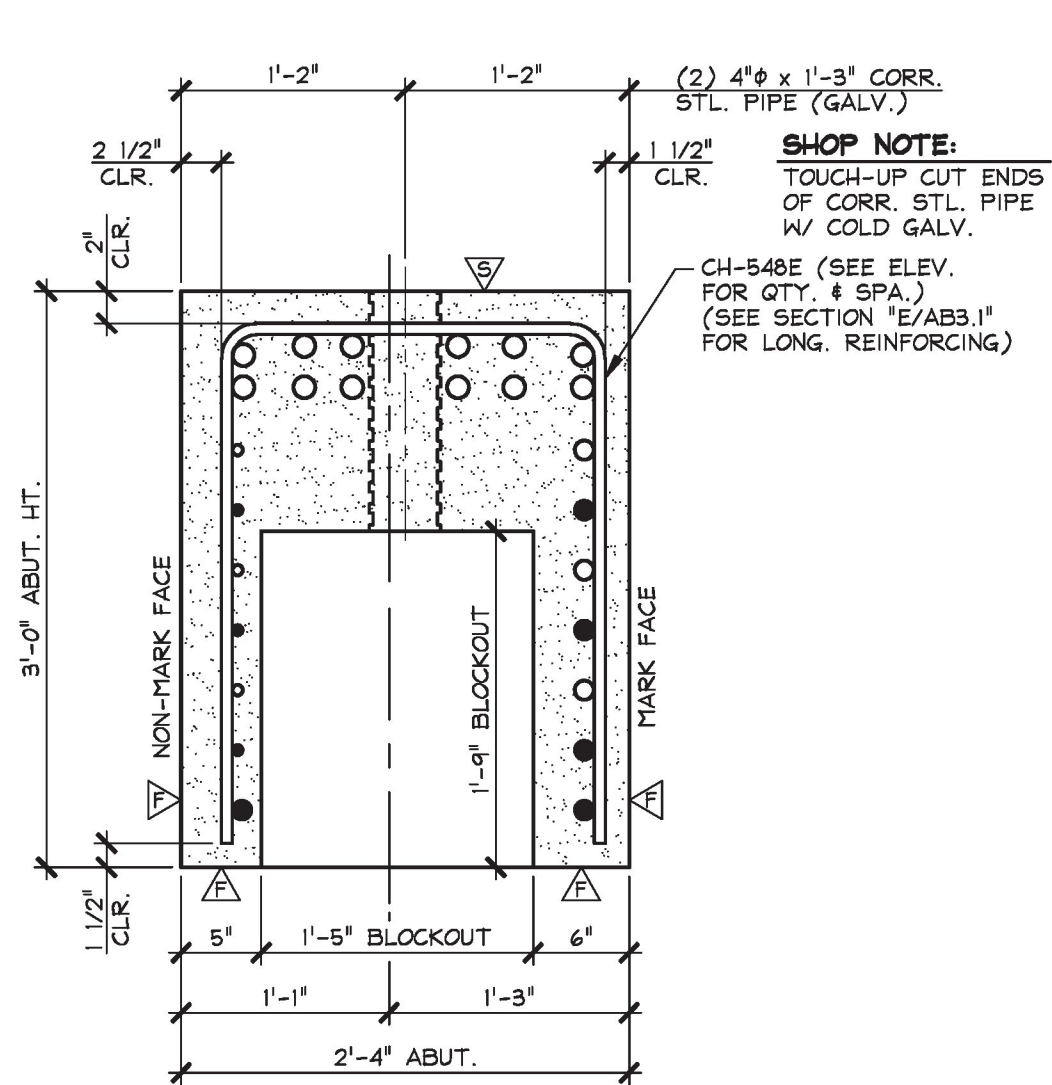


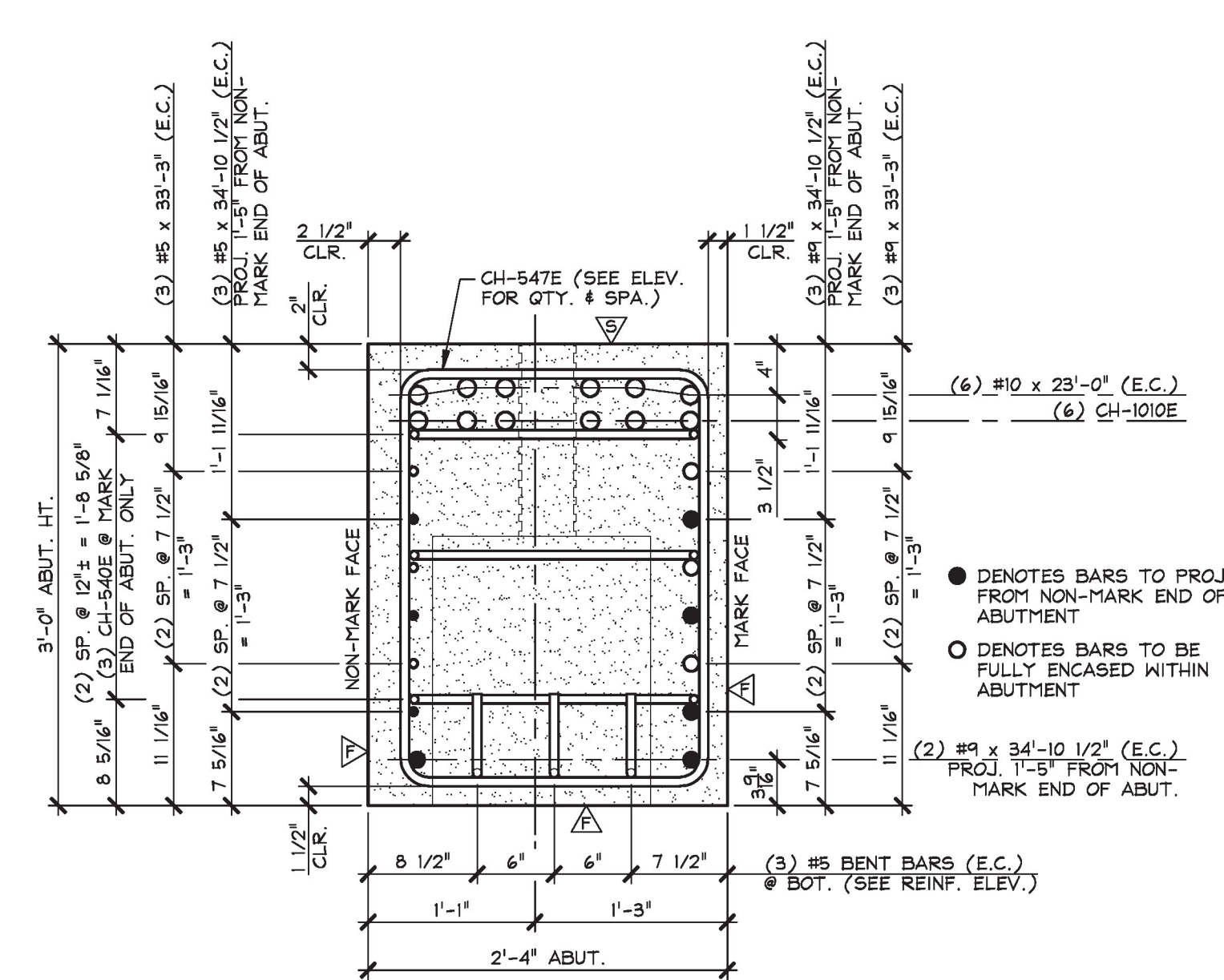
**B** ABUTMENT SECTION  
AB3.1 @ 1'-0"



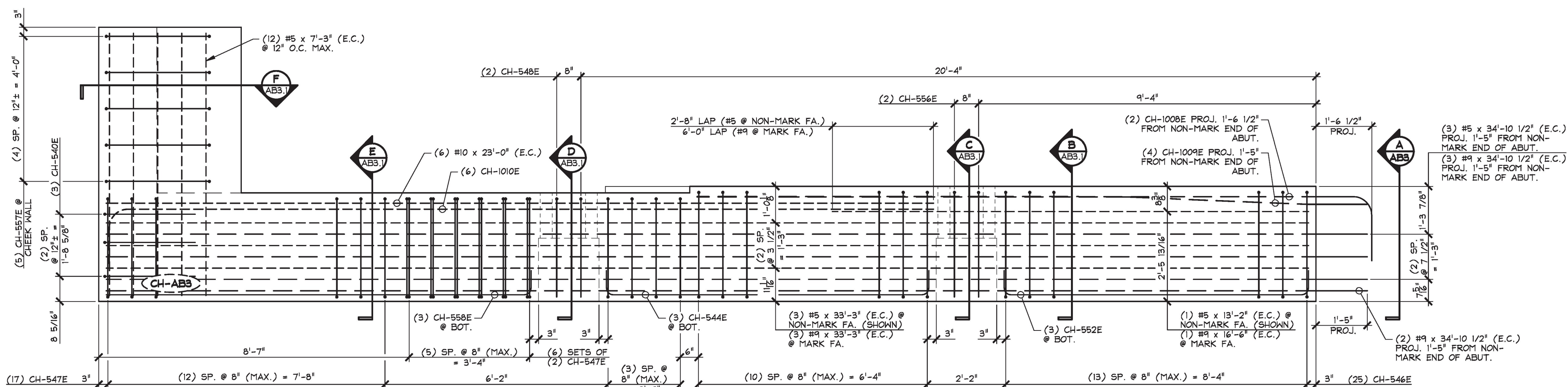
**C** ABUTMENT SECTION  
AB3.1 @ BLOCKOUT @ 1'-0"



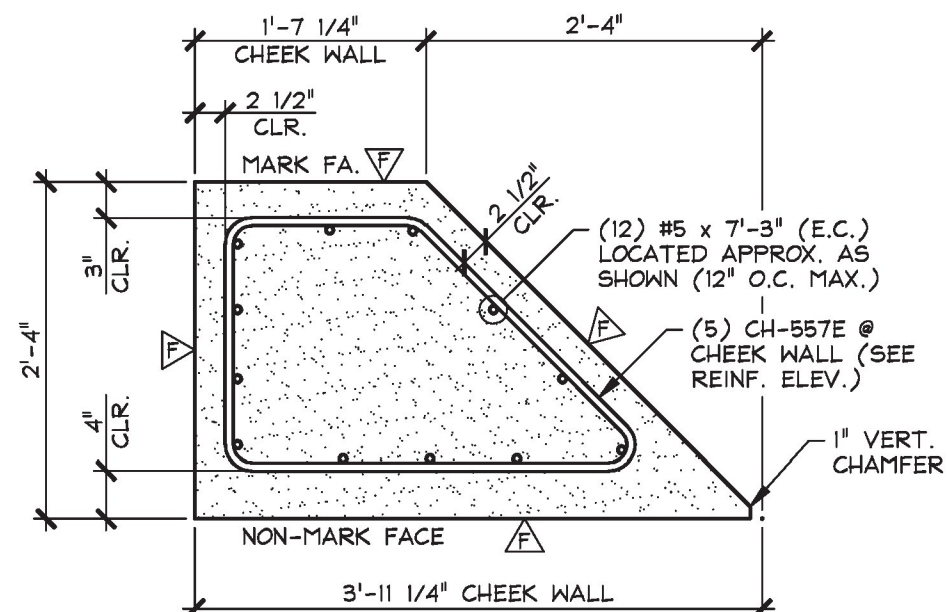
**D** ABUTMENT SECTION  
AB3.1 @ BLOCKOUT @ 1'-0"



**E** ABUTMENT SECTION  
AB3.1 @ 1'-0"



**3** ABUTMENT REINFORCING ELEVATION (NON-MARK FACE)  
AB3.1 @ 1'-0"



**F** CHEEK WALL DETAIL  
AB3.1 @ 3/4" = 1'-0"

▲ DENOTES FORM FINISH  
 ▼ DENOTES SMOOTH FLOAT FINISH  
 △ DENOTES ROUGHENED FINISH (SEE GENERAL NOTE #9, SHEET 'F3')

**SHOP NOTE:**  
 28-DAY STRENGTH = 5,000 PSI  
 HANDLING STRENGTH = 3,500 PSI  
 DESIGN MIX #44BMSCC

MARK: CH-AB3 QTY.: 1

MATERIAL LIST / ABUTMENT			
ITEM	MARK	DESCRIPTION	QTY.
1	CH-540E	#5 BENT BAR (EPOXY COATED)	3
2	CH-544E	#5 BENT BAR (EPOXY COATED)	3
3	CH-546E	#5 BENT BAR (EPOXY COATED)	25
4	CH-547E	#5 BENT BAR (EPOXY COATED)	24
5	CH-548E	#5 BENT BAR (EPOXY COATED)	2
6	CH-552E	#5 BENT BAR (EPOXY COATED)	3
7	CH-556E	#5 BENT BAR (EPOXY COATED)	2
8	CH-557E	#5 BENT BAR (EPOXY COATED)	5
9	CH-558E	#5 BENT BAR (EPOXY COATED)	3
10	#5 x 7'-3"	(EPOXY COATED)	12
11	#5 x 13'-2"	(EPOXY COATED)	1
12	#5 x 34'-10 1/2"	(EPOXY COATED)	3
13	#5 x 33'-3"	(EPOXY COATED)	3
14			
15	#9 x 34'-10 1/2"	(EPOXY COATED)	5
16	#9 x 16'-6"	(EPOXY COATED)	1
17	#9 x 33'-3"	(EPOXY COATED)	3
18			
19	CH-1008E	#10 BENT BAR (EPOXY COATED)	2
20	CH-1009E	#10 BENT BAR (EPOXY COATED)	4
21	CH-1010E	#10 BENT BAR (EPOXY COATED)	6
22	#10 x 23'-0"	(EPOXY COATED)	6
23			
24			
25			

**T.Y. LIN INTERNATIONAL**

THE STAMPED DOCUMENTS ARE HEREBY:

APPROVED  
 APPROVED AS NOTED  
 REVISE AND RESUBMIT

SEE TRANSMITTAL FOR ADDITIONAL INFORMATION AS APPLICABLE.

THIS REVIEW IS FOR GENERAL CONFORMANCE WITH DESIGN CONCEPT ONLY. ANY DEVIATION FROM THE PLANS OR SPECIFICATIONS NOT CLEARLY NOTED BY THE CONTRACTOR HAS NOT BEEN REVIEWED. REVIEW BY THE ENGINEER SHALL NOT RELIEVE THE CONTRACTOR OF THE CONTRACTUAL RESPONSIBILITY FOR ANY ERRORS OR DEVIATION FROM THE CONTRACT REQUIREMENTS.

JOSH OLUND REVIEWER  
 February 24, 2017 DATE

APPROVAL STAMP:  
 Vermont Agency of Transportation  
**RECEIVED**  
 CK'D BY TYLin OK'D BY TYLin  
 February 27, 2017  
 RESUBMIT No Approved  
 BY Kristin Higgins DATE 2/28/2017

**J.P. CARRARA & SONS INC.**  
 Precast & Prestress Manufacturer  
 2464 CASE STR., MIDDLEBURY, VERMONT 05753 Phone: (802)388-6361 Fax: (802)388-9010

CPM CONSTRUCTORS  
 CONTRACTOR  
 FREEPORT, MAINE

STATE OF VERMONT AGENCY OF TRANSPORTATION  
 COUNTY OF ORANGE

TOWN OF CHELSEA  
 VT ROUTE 110, RURAL MAJOR COLLECTOR  
 BRIDGE NO.: 9 PROJECT NO.: BHF 0169(9)

DATE: NOV. 29, 2016  
 SCALE: NOTED  
 CHKD: M.K. DFTM: B.L.  
 JOB NO: 23505-016  
 DWG. NO: AB3.1  
 BRIDGE 9