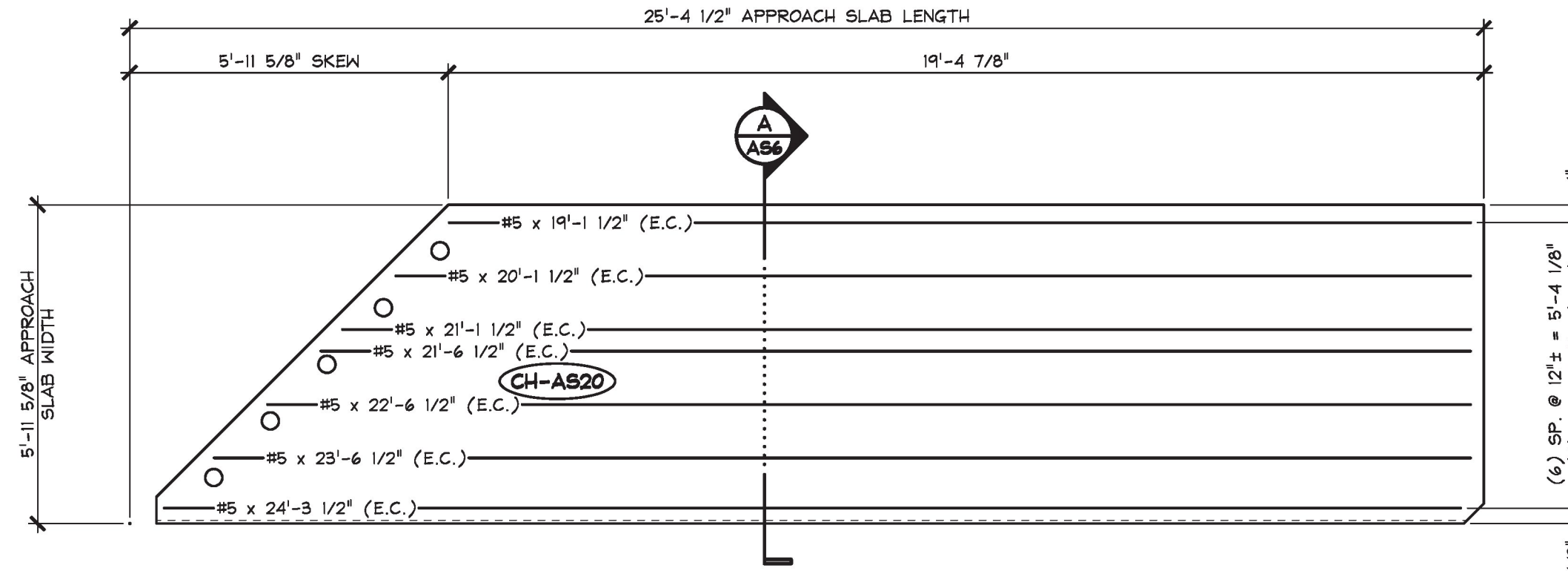
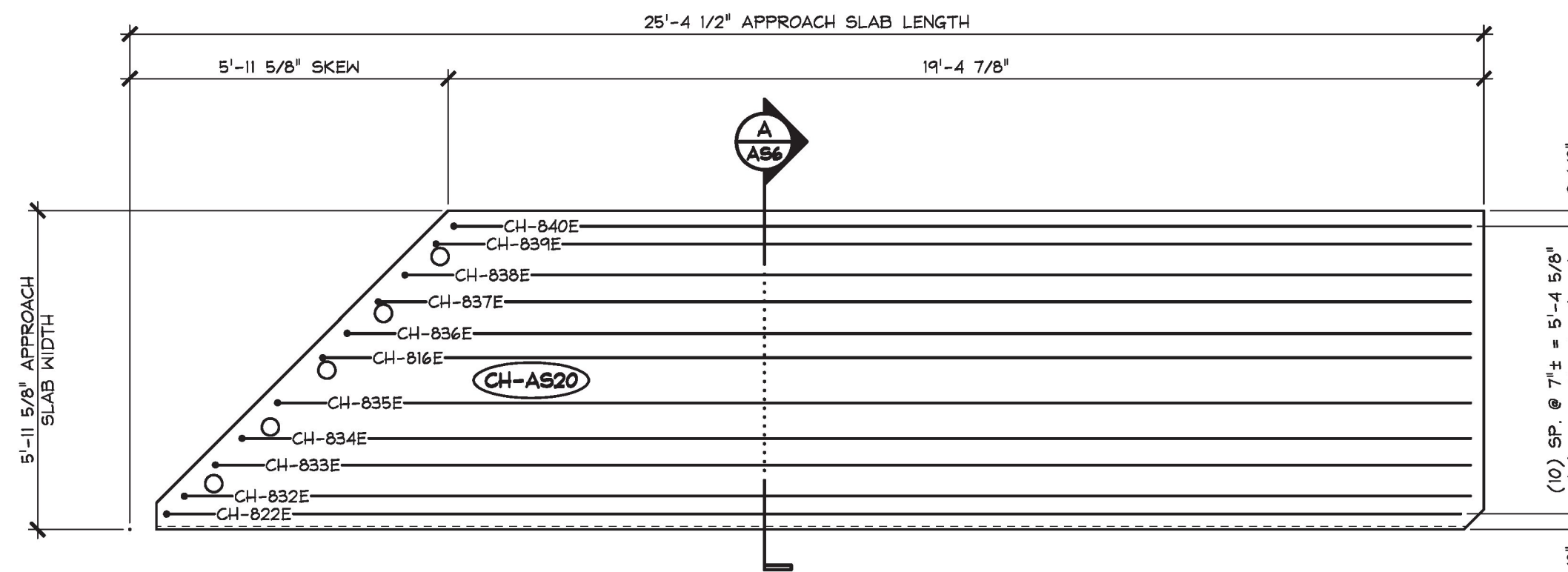


1 PLAN VIEW IN FORM
AS6
3/8" = 1'-0"



2 LONGITUDINAL REINFORCING PLAN
AS6 TOP MAT
3/8" = 1'-0"

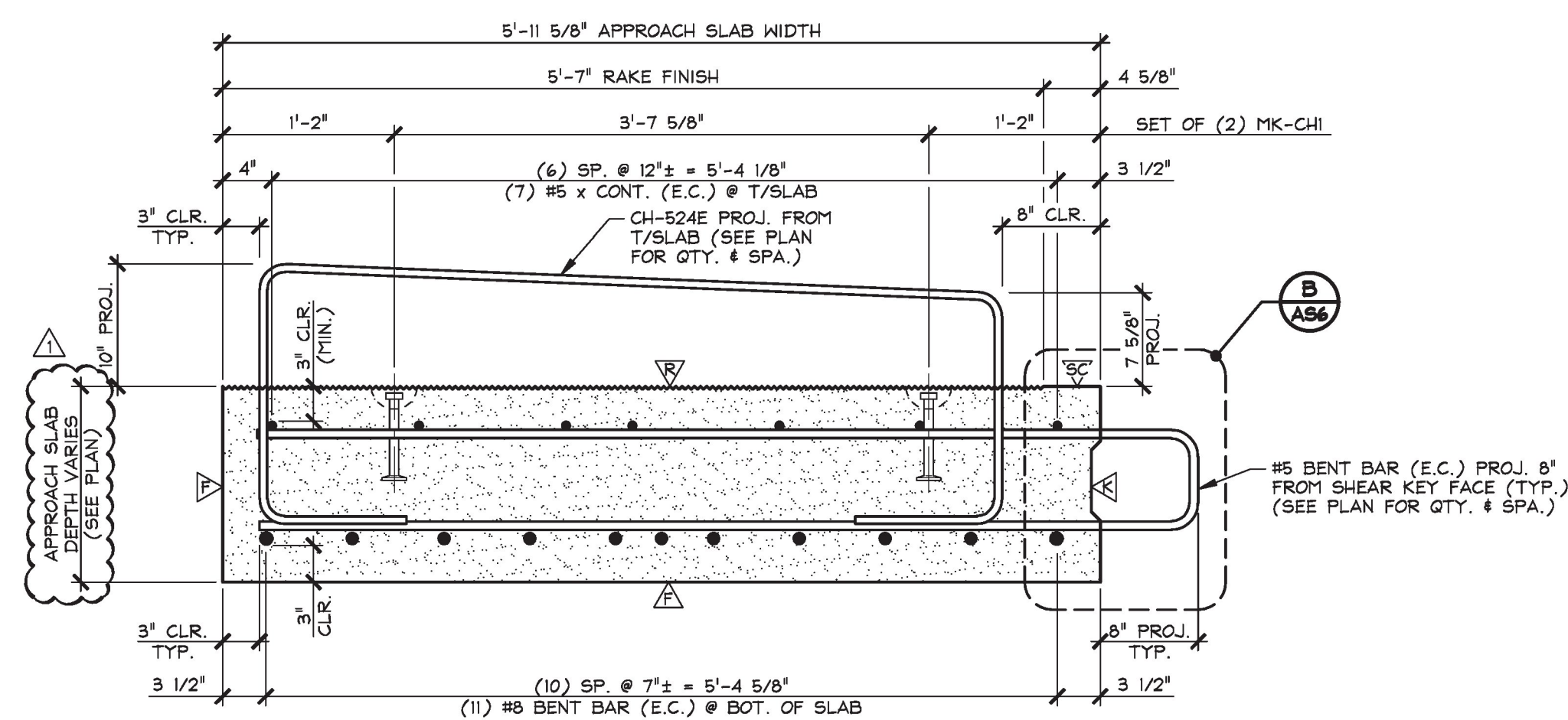


3 LONGITUDINAL REINFORCING PLAN
AS6 BOTTOM MAT
3/8" = 1'-0"

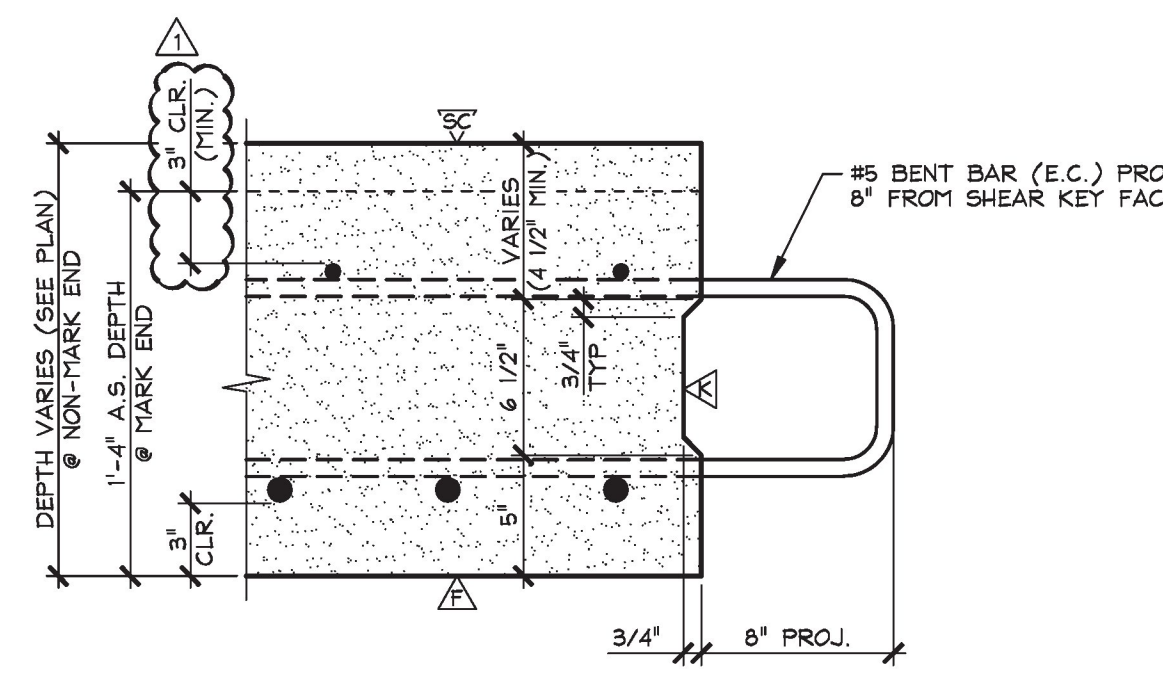
- △ DENOTES FORM FINISH
- ▽ DENOTES SMOOTH SCREED FINISH
- ▲ DENOTES ROUGHENED FINISH (SEE GENERAL NOTE #4, SHEET #1)
- ▽ DENOTES RAKE FINISH ROUGHENED TO 1/4" AMPLITUDE

SHOP NOTE:
28-DAY STRENGTH = 5,000 PSI
HANDLING STRENGTH = 3,000 PSI
DESIGN MIX #445M5CC

MATERIAL LIST / APPROACH SLAB			
ITEM	MARK	DESCRIPTION	QTY.
1	CH-523E	#5 BENT BAR (EPOXY COATED)	16
2	CH-524E	#5 BENT BAR (EPOXY COATED)	16
3	CH-530E	#5 BENT BAR (EPOXY COATED)	1
4	CH-531E	#5 BENT BAR (EPOXY COATED)	1
5	CH-532E	#5 BENT BAR (EPOXY COATED)	1
6	CH-533E	#5 BENT BAR (EPOXY COATED)	1
7	CH-534E	#5 BENT BAR (EPOXY COATED)	1
8	CH-535E	#5 BENT BAR (EPOXY COATED)	1
9	CH-536E	#5 BENT BAR (EPOXY COATED)	1
10	CH-537E	#5 BENT BAR (EPOXY COATED)	1
11	CH-538E	#5 BENT BAR (EPOXY COATED)	1
12		#5 x 7'-6" (EPOXY COATED)	2
13		#5 x 19'-1 1/2" (EPOXY COATED)	1
14		#5 x 20'-1 1/2" (EPOXY COATED)	1
15		#5 x 21'-1 1/2" (EPOXY COATED)	1
16		#5 x 21'-6 1/2" (EPOXY COATED)	1
17		#5 x 22'-6 1/2" (EPOXY COATED)	1
18		#5 x 23'-6 1/2" (EPOXY COATED)	1
19		#5 x 24'-3 1/2" (EPOXY COATED)	1
20			
21	CH-816E	#8 BENT BAR (EPOXY COATED)	1
22	CH-822E	#8 BENT BAR (EPOXY COATED)	1
23	CH-832E	#8 BENT BAR (EPOXY COATED)	1
24	CH-833E	#8 BENT BAR (EPOXY COATED)	1
25	CH-834E	#8 BENT BAR (EPOXY COATED)	1
26	CH-835E	#8 BENT BAR (EPOXY COATED)	1
27	CH-836E	#8 BENT BAR (EPOXY COATED)	1
28	CH-837E	#8 BENT BAR (EPOXY COATED)	1
29	CH-838E	#8 BENT BAR (EPOXY COATED)	1
30	CH-839E	#8 BENT BAR (EPOXY COATED)	1
31	CH-840E	#8 BENT BAR (EPOXY COATED)	1
32			
33	MK-CH1	8T x 10' SWIFT LIFT LIFTER (GALV.)	4
34		4" I.D. x 1'-4" PVC SLEEVE	5
35			



A TRANSVERSE SECTION
AS6
1" = 1'-0"



B SHEAR KEY SECTION
AS6
1 1/2" = 1'-0"

T.Y. LIN INTERNATIONAL
THE STAMPED DOCUMENTS ARE HEREBY:

-X- APPROVED
- - APPROVED AS NOTED
- - REVISE AND RESUBMIT

SEE TRANSMITTAL FOR ADDITIONAL INFORMATION AS APPLICABLE.

THIS REVIEW IS FOR GENERAL CONFORMANCE WITH DESIGN CONCEPT ONLY. ANY DEVIATION FROM THE PLANS OR SPECIFICATIONS NOT CLEARLY NOTED BY THE CONTRACTOR HAS NOT BEEN REVIEWED. REVIEW BY THE ENGINEER SHALL NOT RELIEVE THE CONTRACTOR OF THE CONTRACTUAL RESPONSIBILITY FOR ANY ERRORS OR DEVIATION FROM THE CONTRACT REQUIREMENTS.

JOSH OLUND
REVIEWER
February 24, 2017
DATE

2-22-17 REVISED AS NOTED

APPROVAL STAMP:
Vermont Agency of Transportation
RECEIVED
CK'D BY TYLin OK'D BY TYLin
February 27, 2017
RESUBMIT No Approved
BY Kristin Higgins DATE 2/28/2017

J.P. CARRARA & SONS INC.
Precast & Prestress Manufacturer
2464 CASE STR., MIDDLEBURY, VERMONT 05753 Phone: (802)388-6361 Fax: (802)388-9010

STATE OF VERMONT AGENCY OF TRANSPORTATION
COUNTY OF ORANGE

TOWN OF CHELSEA
VT ROUTE 110, RURAL MAJOR COLLECTOR
BRIDGE NO.: 9 PROJECT NO.: BHF 0169(9)

PRECAST APPROACH SLAB DETAILS

CPM CONSTRUCTORS
CONTRACTOR
FREEPORT, MAINE

DATE: NOV. 29, 2016
SCALE: NOTED
CHKD: A.S. DFTM: B.L.
JOB NO: 23505-016
DWG. NO: AS6
BRIDGE 9