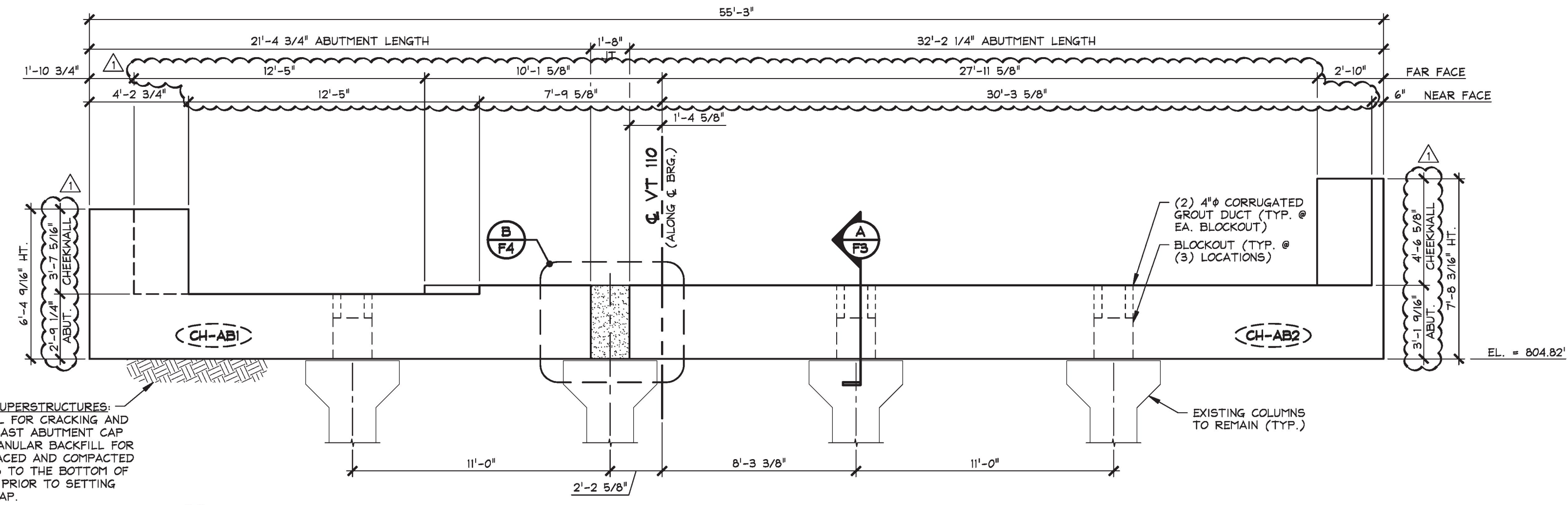


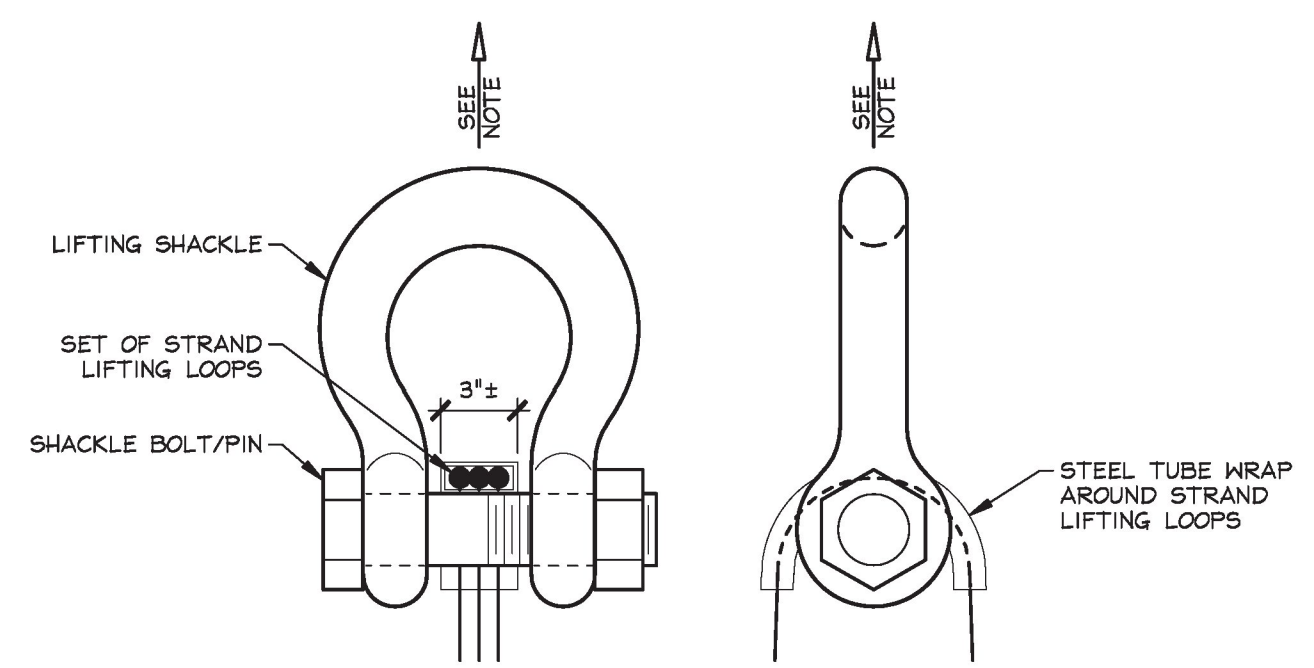
1 PRECAST ABUTMENT NO. 1 PLAN VIEW  
1/4" = 1'-0"



2 PRECAST ABUTMENT NO. 1 ELEVATION  
1/4" = 1'-0"

GRANULAR BACKFILL FOR SUPERSTRUCTURES:  
TO MINIMIZE THE POTENTIAL FOR CRACKING AND  
OVERTURNING OF THE PRECAST ABUTMENT CAP  
DURING CONSTRUCTION, GRANULAR BACKFILL FOR  
STRUCTURES SHALL BE PLACED AND COMPACTED  
PER VTAOT SPECIFICATIONS TO THE BOTTOM OF  
ABUTMENT CAP ELEVATION PRIOR TO SETTING  
THE PRECAST ABUTMENT CAP.

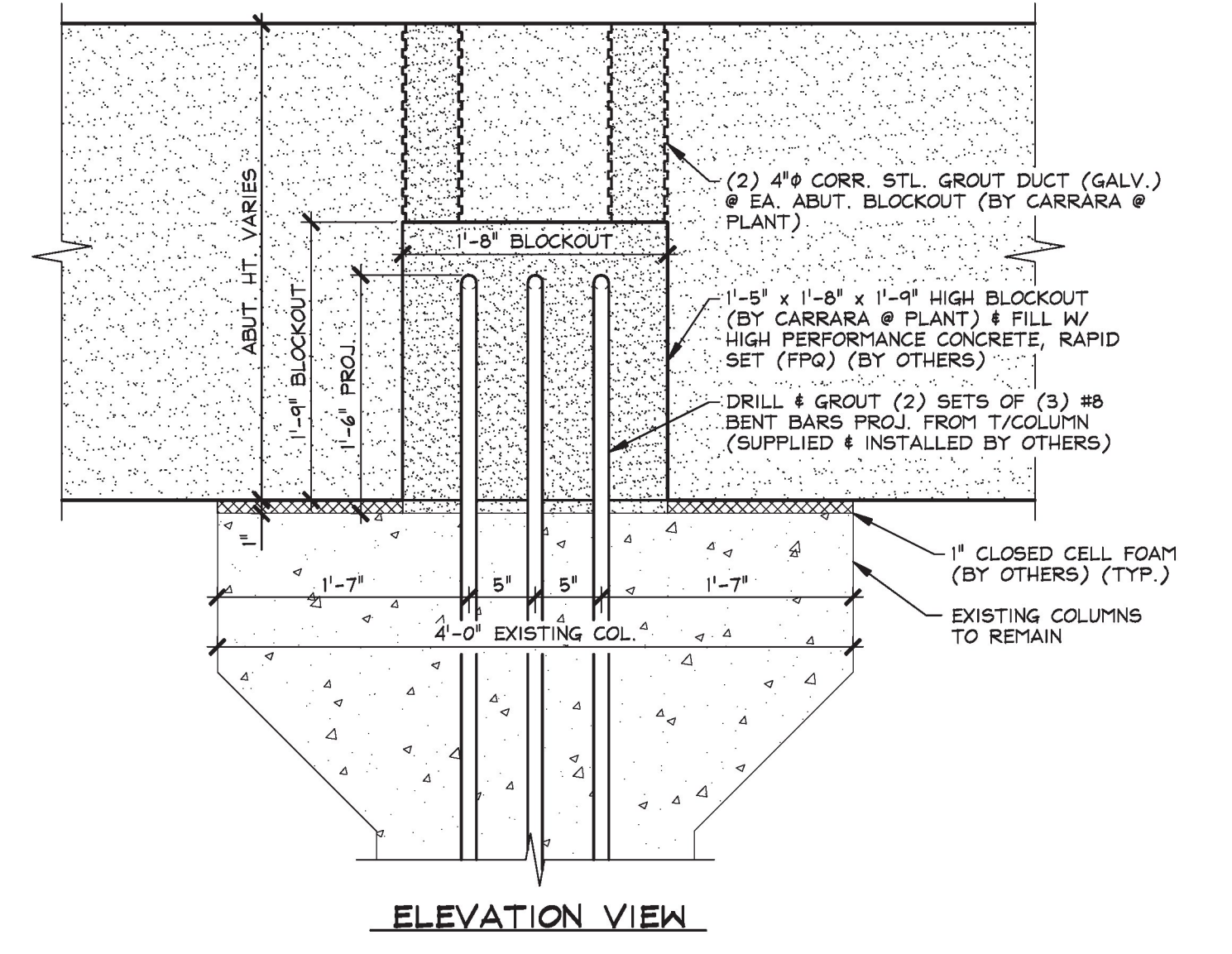
**ERECTION NOTE:**  
PRECAST DETAILING REQUIRES  
INSTALLATION OF "CH-AB2" PRIOR TO  
"CH-AB1"



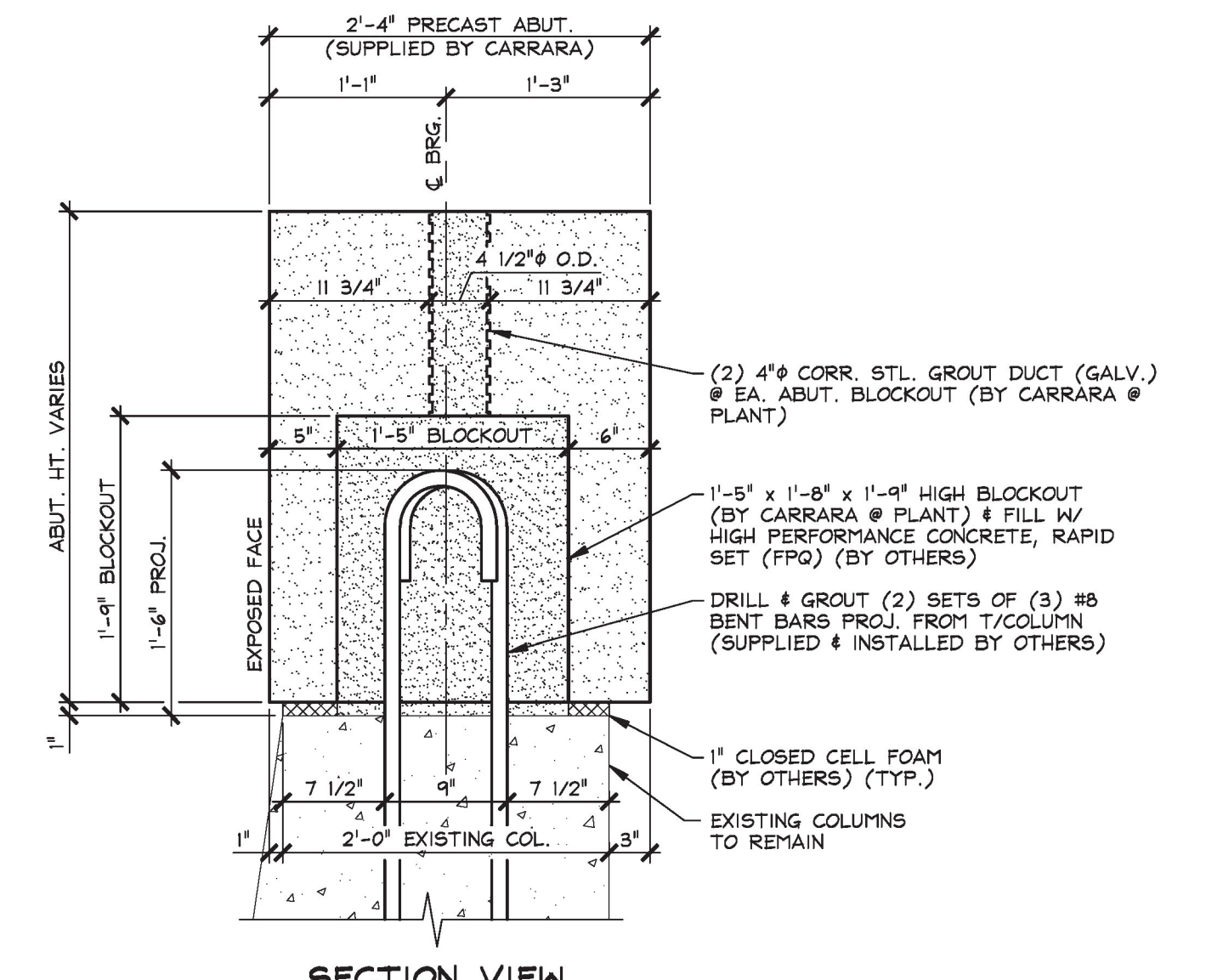
LIFTING SHACKLE DETAILS  
N.T.S.

**ABUTMENT GENERAL NOTES**

- MIN. CONCRETE STRENGTH AT 28 DAYS SHALL BE 5,000 PSI.
- MIN. CONCRETE STRENGTH FOR HANDLING SHALL BE 3,500 PSI (UNLESS NOTED OTHERWISE).
- REINFORCING STEEL SHALL BE GR-60, ASTM A-615 (AASHTO M61), AND SHALL BE EPOXY COATED, (AS NOTED ON SHOP DRAWINGS).
- THE TOP OF ABUTMENTS SHALL RECEIVE A SMOOTH FLOAT FINISH (UNLESS NOTED OTHERWISE).
- ABUTMENTS SHALL BE HANDLED AND ERECTED USING THE LIFTING LOOPS ONLY. RIGGING SHALL BE CONFIGURED SUCH THAT EQUAL AND VERTICAL FORCES ARE APPLIED TO EACH OF THE LIFTING LOOPS AT EACH END OF THE ABUTMENT. **THE PINS OF THE SHACKLES SHALL BE PLACED THROUGH THE LIFTING LOOPS. SEE DETAIL, THIS SHEET.** ABUTMENTS SHALL BE STORED AND TRANSPORTED WITH TIMBER SUPPORTS AS NOTED ON INDIVIDUAL ABUTMENT DETAIL DRAWINGS, UNLESS APPROVED BY J.P. CARRARA & SONS, INC. LIFTING LOOP POCKETS TO BE GROUTED AFTER INSTALLATION (BY OTHERS).
- MATERIAL SPECIFICATION AND MIX DESIGN SHALL CONFORM TO VERMONT SPEC. F540.02 AND P540.05 RESPECTIVELY.  
DESIGN MIX: J.P.C. BRIDGE MIX #445MSCC  
AIR 5% - 9%  
SPREAD 20' - 28'  
APPROVAL DATE JUNE 6, 2016
- QUALITY CONTROL AND REPAIR PROCEDURES ARE IN ACCORDANCE WITH PCI REQUIREMENTS. J.P. CARRARA & SONS, INC. IS A PCI CERTIFIED PLANT.
- CURING METHOD: AS SOON AS THE TOP OF THE ABUTMENTS ARE FINISHED A COVER OF POLY WILL BE PLACED OVER THE UNITS IN A MANNER THAT WILL NOT DISTURB THE FINISH. THE TEMPERATURE SHALL BE RECORDED BY AUTOMATIC SENSOR INSTRUMENT ON GRAPH CHART AND WILL CONTINUE UNTIL RELEASE STRENGTH IS ACHIEVED. THE CHART SHALL BE MARKED AND PROVIDED TO THE QA INSPECTOR. THE UNITS SHALL NOT BE EXPOSED TO A TEMPERATURE DIFFERENTIAL BETWEEN THE SURFACE OF THE HARDENED CONCRETE AND THE AMBIENT STORAGE ENVIRONMENT OF GREATER THAN 40°F AT ANY TIME. UNITS SHALL NOT BE EXPOSED TO AMBIENT TEMPERATURES LESS THAN 36°F UNTIL THE DESIGN STRENGTH IS ACHIEVED.
- CONSTRUCTION JOINT SURFACES SHALL BE ROUGHENED TO PROVIDE AN 1/8" AMPLITUDE EXPOSED AGGREGATE PROFILE. FABRICATOR MAY UTILIZE A SURFACE RETARDER WITH WATER BLAST, SAND BLAST, OR A COMBINATION OF BOTH TO ACHIEVE THE DESIRED SHEAR KEY SURFACE FINISH.



ELEVATION VIEW



SECTION VIEW

A ABUTMENT BEARING DETAILS  
1/4" = 1'-0"

**T.Y. LIN INTERNATIONAL**  
THE STAMPED DOCUMENTS ARE HEREBY:

APPROVED  
 APPROVED AS NOTED  
 REVISE AND RESUBMIT

SEE TRANSMITTAL FOR ADDITIONAL INFORMATION AS APPLICABLE.

THIS REVIEW IS FOR GENERAL CONFORMANCE WITH DESIGN CONCEPT ONLY. ANY DEVIATION FROM THE PLANS OR SPECIFICATIONS NOT CLEARLY NOTED BY THE CONTRACTOR HAS NOT BEEN REVIEWED. REVIEW BY THE ENGINEER SHALL NOT RELIEVE THE CONTRACTOR OF THE CONTRACTUAL RESPONSIBILITY FOR ANY ERRORS OR DEVIATION FROM THE CONTRACT REQUIREMENTS.

JOSH OLUND  
REVIEWER

February 24, 2017  
DATE

2-22-17 REVISED AS NOTED

APPROVAL STAMP:  
Vermont Agency of Transportation  
**RECEIVED**  
CK'D BY TYLin OK'D BY TYLin  
February 27, 2017  
RESUBMIT No Approved  
By Kristin Higgins DATE 2/28/2017

**J.P. CARRARA & SONS INC.**  
Precast & Prestress Manufacturer  
284 OASE STR., MIDDLEBURY, VERMONT 05753 Phone: (802)388-6361 Fax: (802)388-9010

**STATE OF VERMONT AGENCY OF TRANSPORTATION**  
COUNTY OF ORANGE

TOWN OF CHELSEA  
VT ROUTE 110, RURAL MAJOR COLLECTOR  
BRIDGE NO.: 9 PROJECT NO.: BHF 0169(9)

**PRECAST ABUTMENT NO. 1**  
PLAN, ELEVATION & BEARING DETAILS

CPM CONSTRUCTORS  
CONTRACTOR  
FREEPORT, MAINE

DATE: NOV. 29, 2016  
SCALE: NOTED  
CHKD: M.W. DFTM: B.L.  
JOB NO: 23505-016  
DWG. NO: **F3**  
BRIDGE 9