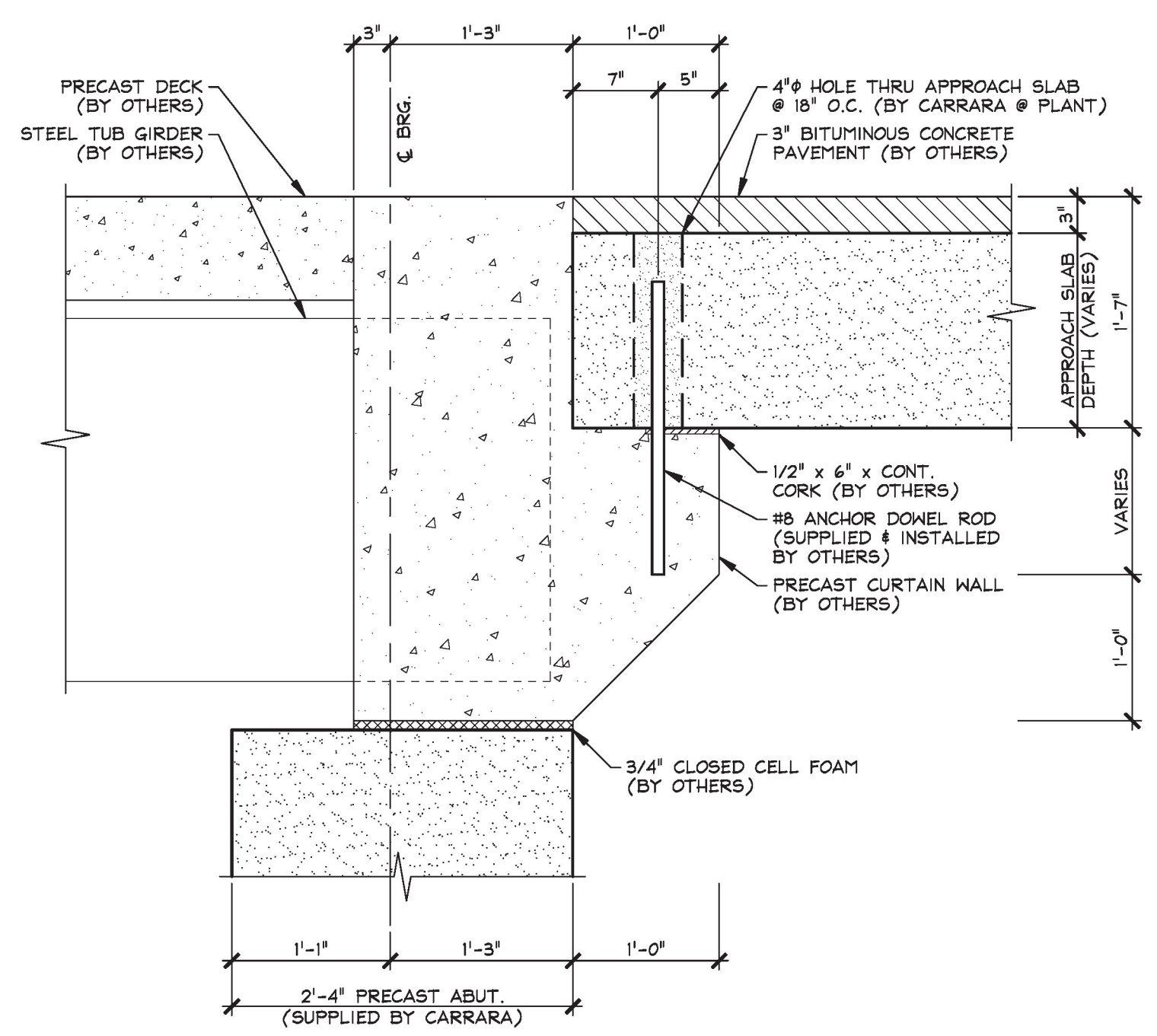
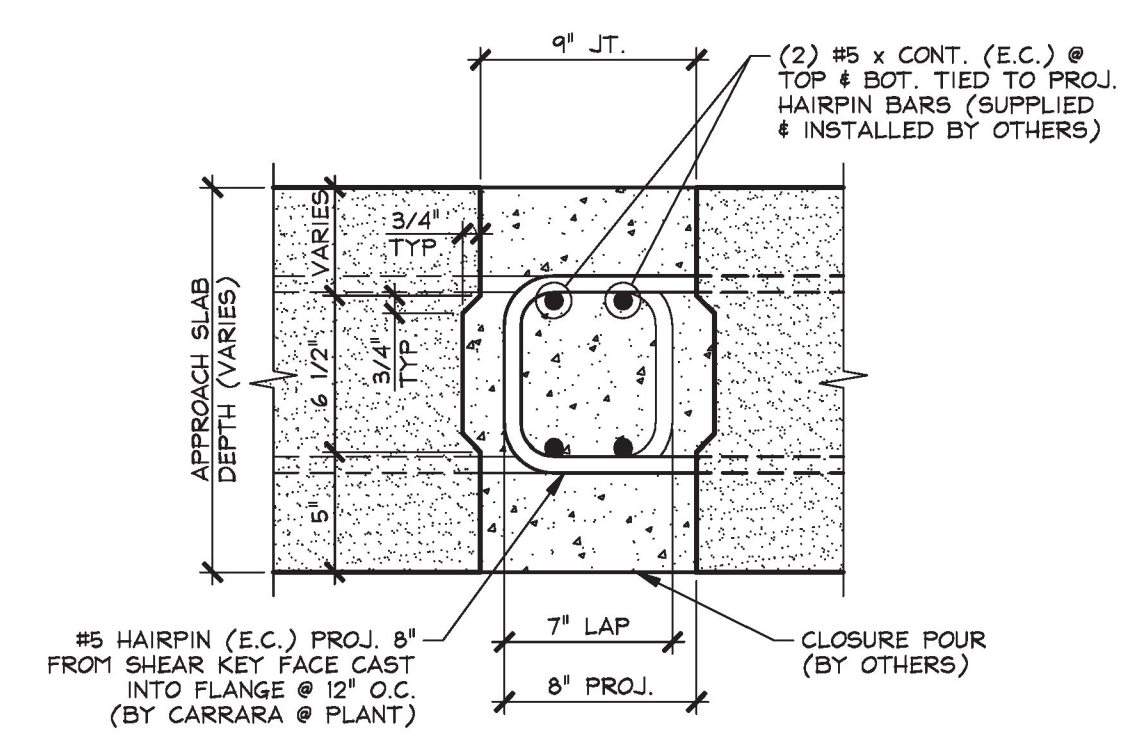


A TRANSVERSE SECTION
F2
 1/2" = 1'-0"



B APPROACH SLAB BEARING SECTION
F2
 1" = 1'-0"



C SHEAR KEY SECTION @ APPROACH SLABS
F2
 1 1/2" = 1'-0"

T.Y. LIN INTERNATIONAL
 THE STAMPED DOCUMENTS ARE HEREBY:
 APPROVED
 APPROVED AS NOTED
 REVISE AND RESUBMIT
 SEE TRANSMITTAL FOR ADDITIONAL INFORMATION AS APPLICABLE.
 THIS REVIEW IS FOR GENERAL CONFORMANCE WITH DESIGN CONCEPT ONLY. ANY DEVIATION FROM THE PLANS OR SPECIFICATIONS NOT CLEARLY NOTED BY THE CONTRACTOR HAS NOT BEEN REVIEWED. REVIEW BY THE ENGINEER SHALL NOT RELIEVE THE CONTRACTOR OF THE CONTRACTUAL RESPONSIBILITY FOR ANY ERRORS OR DEVIATION FROM THE CONTRACT REQUIREMENTS.
 JOSH OLUND February 24, 2017
 REVIEWER DATE

APPROVAL STAMP:
 Vermont Agency of Transportation
RECEIVED
 CK'D BY TYLin OK'D BY TYLin
 February 27, 2017
 RESUBMIT No Approved
 BY Kristin Higgins DATE 2/28/2017

J.P. CARRARA & SONS INC. Precast & Prestress Manufacturer 2464 OASE STR., MIDDLEBURY, VERMONT 05753 Phone:(802)388-6361 Fax:(802)388-9010	CPM CONSTRUCTORS CONTRACTOR FREEPORT, MAINE
STATE OF VERMONT AGENCY OF TRANSPORTATION COUNTY OF ORANGE	DATE: NOV. 29, 2016 SCALE: NOTED
TOWN OF CHelsea VT ROUTE 110, RURAL MAJOR COLLECTOR BRIDGE NO.: 9 PROJECT NO.: BHF 0169(9)	CHKD: A.S. DFTM: B.L. JOB NO: 23505-016
PRECAST APPROACH SLAB SECTIONS & DETAILS	DWG. NO: F2 BRIDGE 9