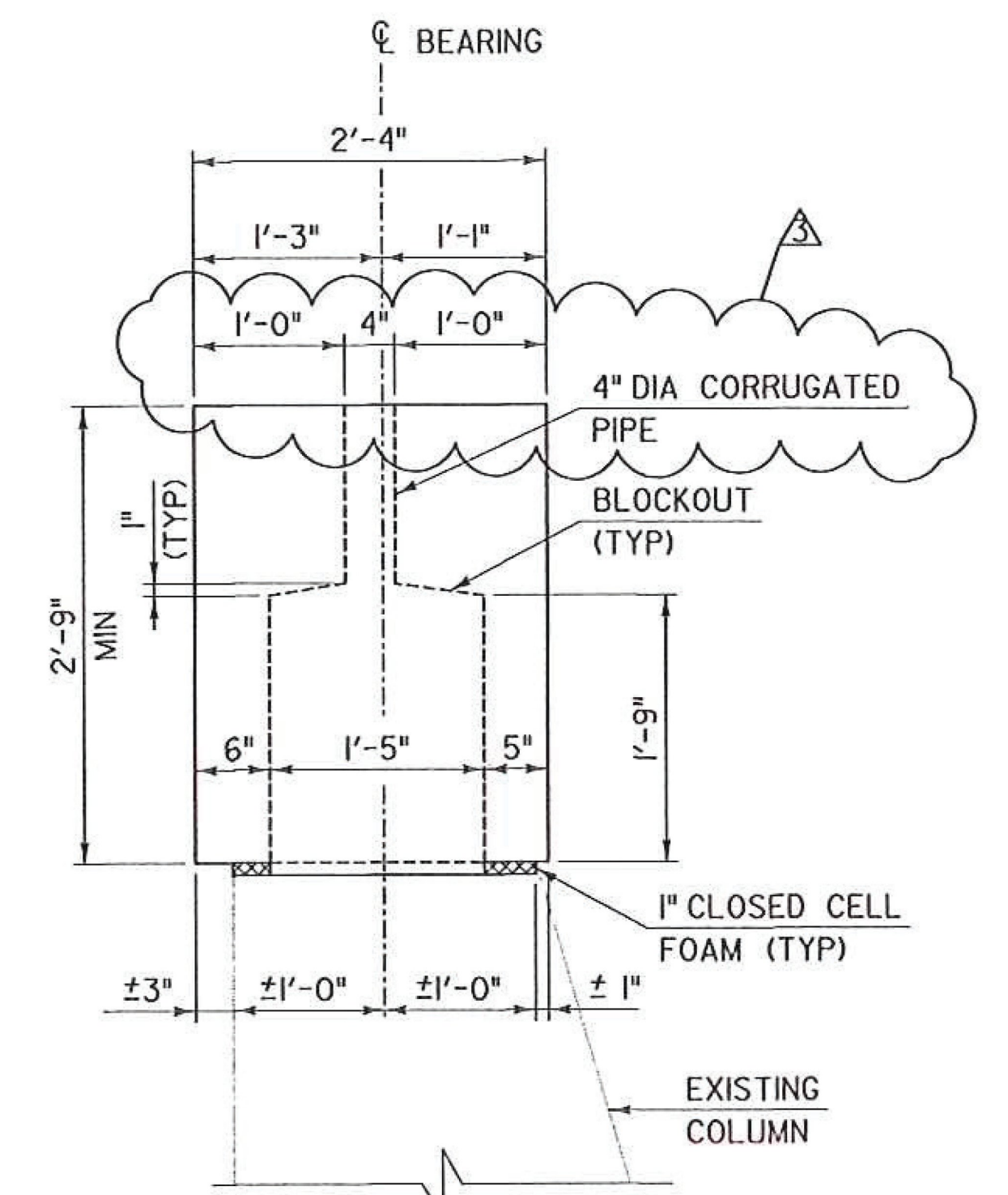
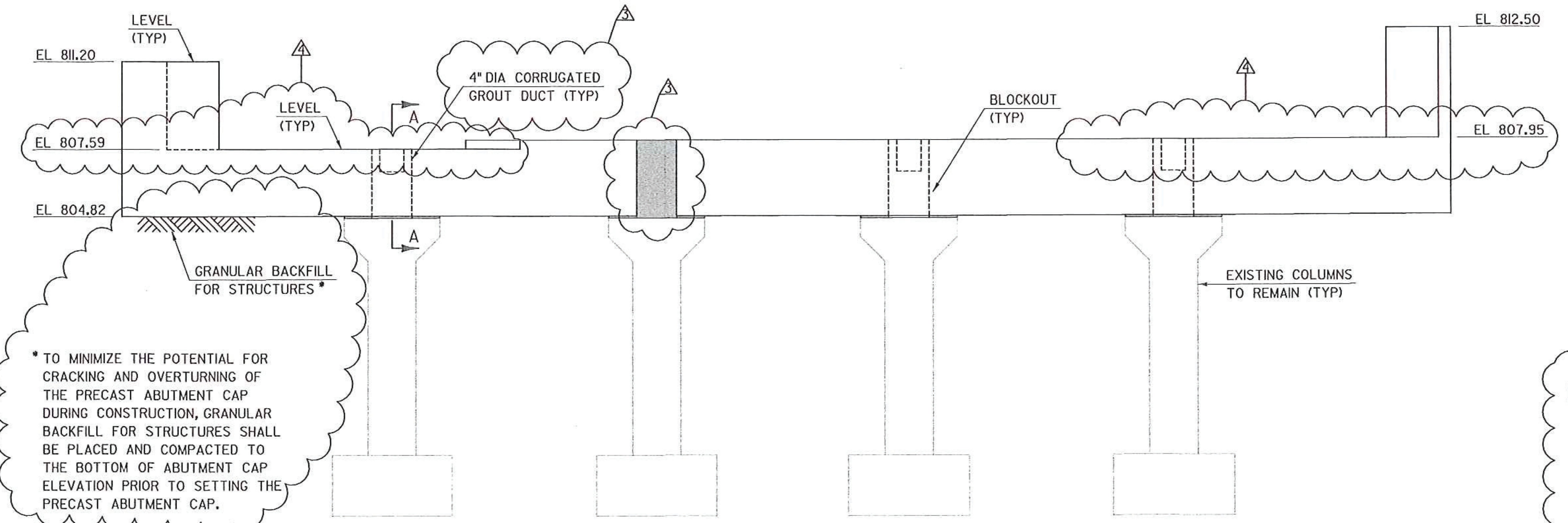


**ABUTMENT NO 1 - PLAN**  
 SCALE: 3/8" = 1'-0"  
 (COLUMNS & FOOTINGS NOT SHOWN FOR CLARITY)



**SECTION A-A**  
 SCALE: 1" = 1'-0"



**ABUTMENT NO 1 - ELEVATION**  
 SCALE: 3/8" = 1'-0"

\* TO MINIMIZE THE POTENTIAL FOR CRACKING AND OVERTURNING OF THE PRECAST ABUTMENT CAP DURING CONSTRUCTION, GRANULAR BACKFILL FOR STRUCTURES SHALL BE PLACED AND COMPACTED TO THE BOTTOM OF ABUTMENT CAP ELEVATION PRIOR TO SETTING THE PRECAST ABUTMENT CAP.

**LEGEND:**

- SPECIAL PROVISION (HIGH PERFORMANCE CONCRETE, RAPID SET) (FPQ)
- CLOSED CELL FOAM

REV	DATE	DESCRIPTION
△	10/26/2016	ADDED OPTIONAL PRECAST JOINT
△	10/31/2016	BACKFILL REQUIREMENT ADDED
△	01/05/2017	ALTERED PRECAST JOINT DETAIL; RETRACTED REVISION I; CHANGED BLOCKOUT DUCT DIA
△	01/23/2017	SEAT ELEVATION CHANGE

**TYLIM** INTERNATIONAL

**PRINTED AT 49% SCALE!**

PROJECT NAME: CHelsea  
 PROJECT NUMBER: BHf 0169(9)

FILE NAME: z12c150abut1.dgn  
 PROJECT LEADER: J. OLUND  
 DESIGNED BY: D. MYERS  
 ABUTMENT 1 PLAN & ELEVATION

PLOT DATE: 1/23/2017  
 DRAWN BY: S. MORGAN  
 CHECKED BY: J. OLUND  
 SHEET 50A OF 137