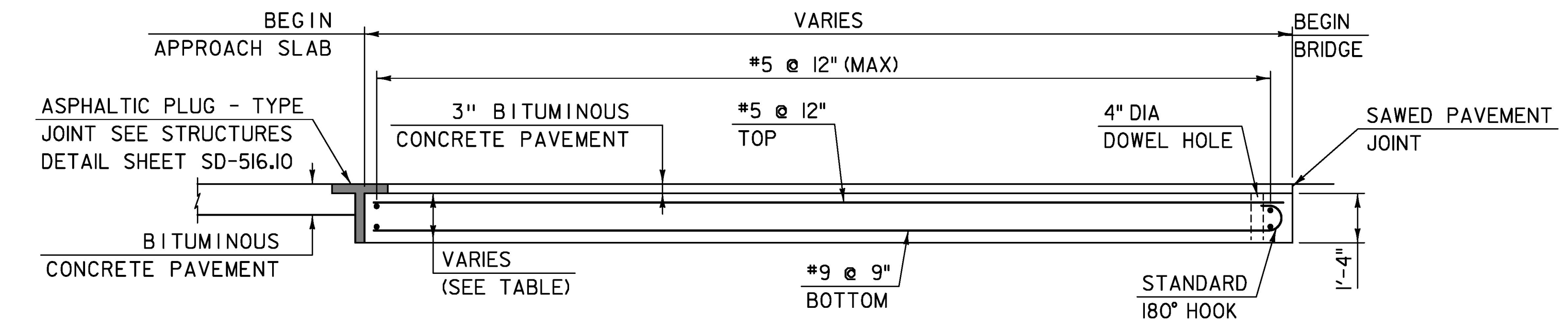


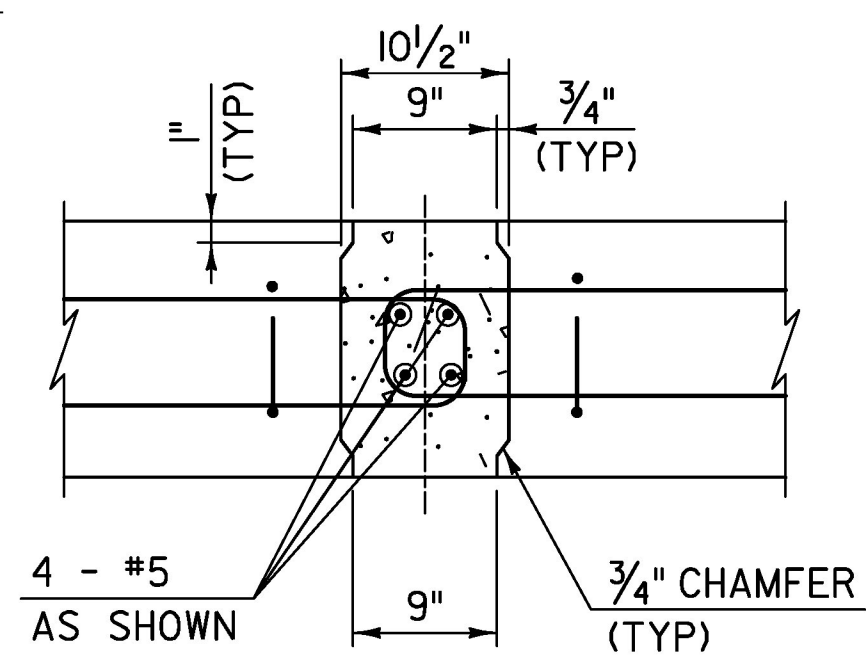
APPROACH SLAB NO 1 PLAN VIEW

SCALE: 3/8" = 1'-0"

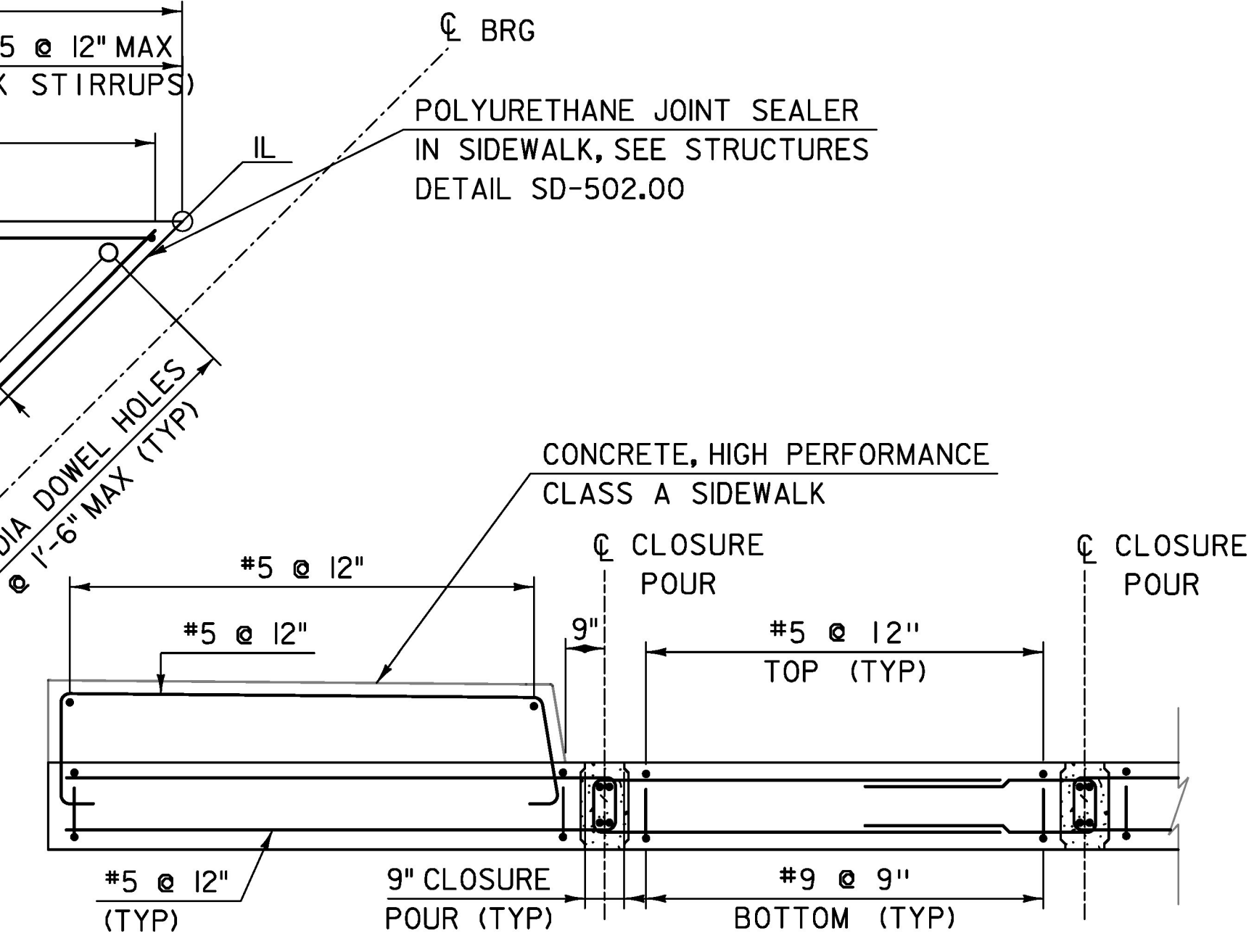


APPROACH SLAB ELEVATION VIEW

SCALE: 3/8" = 1'-0"
(APPROACH SLAB 1 SHOWN, APPROACH SLAB 2 SIMILAR)



**SECTION B-B
CLOSURE POUR DETAIL**
SCALE 1" = 1'-0"



**SECTION A-A
NOT TO SCALE**

LAYOUT AND BOTTOM ELEVATIONS			
	STATION	OFFSET	BOTTOM ELEVATION
IA	145+20.41	19.60 LT	809.50
IB	145+20.41	14.00 LT	809.63
IG	145+06.41	0.00	809.68
IK	144+92.41	14.00 RT	809.14
IL	145+51.01	19.60 LT	810.08
IQ	145+31.41	0.00	810.15
IU	145+17.41	14.00 RT	809.61

APPROACH SLAB THICKNESSES	
	THICKNESS
IA	16 1/2"
IB	16 3/8"
IC	16 3/8"
ID	16 3/8"
IE	16 1/8"
IF	16 1/8"
IG - IU	16"

NOTES:

- CONTRACTOR SHALL BE RESPONSIBLE FOR ESTABLISHING UNIFORM CONTACT BETWEEN THE APPROACH SLAB AND THE SUBBASE MATERIAL TO THE SATISFACTION OF THE ENGINEER. THE FABRICATION DRAWINGS SHALL INDICATE THE MEANS AND METHODS NECESSARY TO INSTALL THE APPROACH SLABS TO THE ELEVATIONS SPECIFIED.
- APPROACH SLAB REINFORCING STEEL SHOWN IS TYPICAL FOR EACH PANEL.
- COORDINATE APPROACH SLAB DOWEL HOLE LOCATIONS WITH #8 BARS EXTENDING FROM INTEGRAL CURTAIN WALLS ON PBU'S.
- BOTTOM OF SLAB ELEVATIONS AND SLAB THICKNESSES SHALL BE LINEARLY INTERPOLATED BY THE CONTRACTOR BETWEEN POINTS PROVIDED IN THE LAYOUT AND BOTTOM ELEVATIONS AND APPROACH SLAB THICKNESSES TABLES.
- PAYMENT FOR #5 SIDEWALK STIRRUPS AND LONGITUDINAL BARS WILL BE INCLUDED UNDER THE APPROPRIATE PRECAST APPROACH SLAB ITEM.
- PAYMENT OF SIDEWALK JOINT WILL BE CONSIDERED INCIDENTAL TO ITEM 516.10 "BRIDGE EXPANSION JOINT, ASPHALTIC PLUG".
- SEE "APPROACH SLAB DETAILS 2" SHEET FOR SIDEWALK JOINT DETAIL.

TYLIN INTERNATIONAL	PROJECT NAME: CHelsea	PLOT DATE: 8/31/2016
	PROJECT NUMBER: BHF 0169(9)	DRAWN BY: S. MORGAN
	FILE NAME: z12cl50aslsl.dgn	CHECKED BY: T. POULIN
	DESIGNED BY: B. TOOTHAKER	SHEET 48 OF 137
	APPROACH SLAB DETAILS 1	