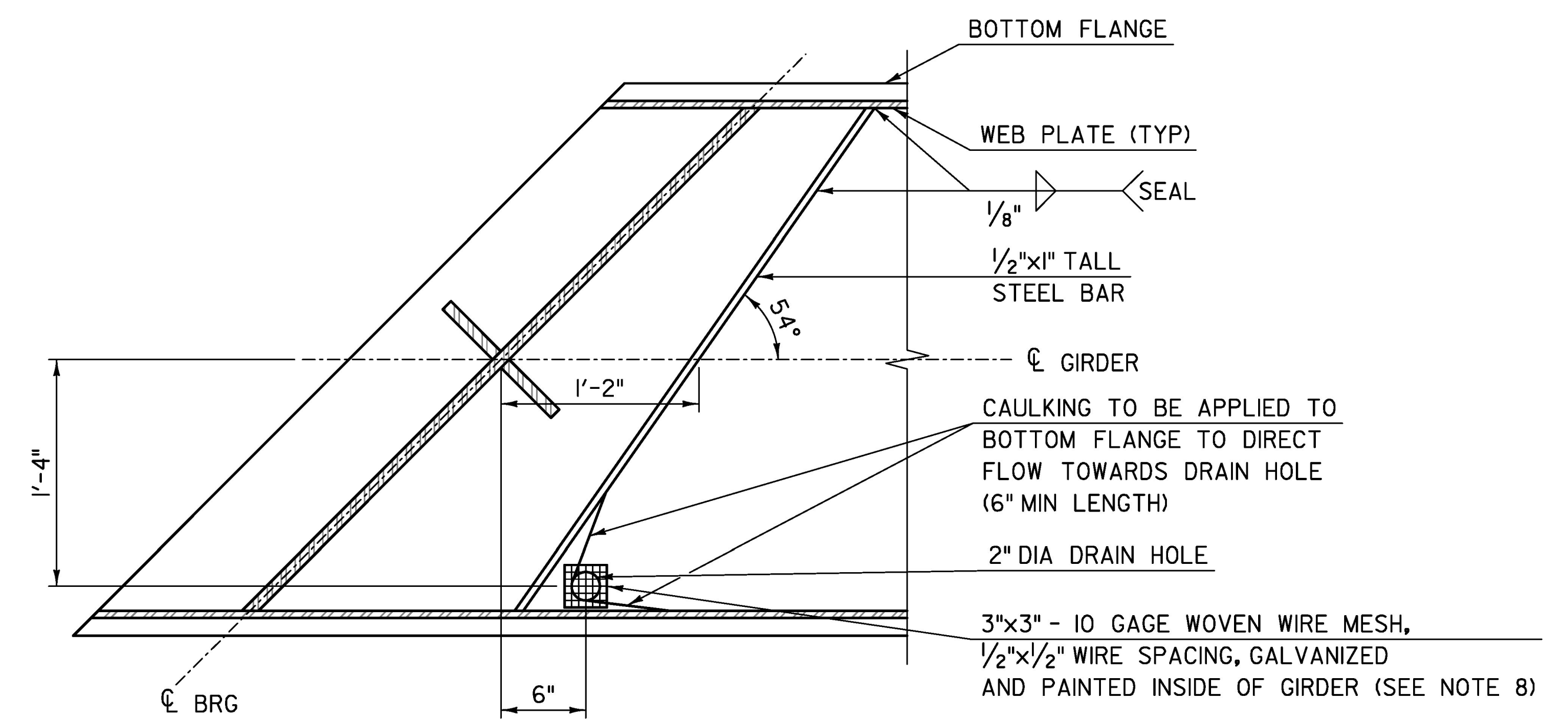


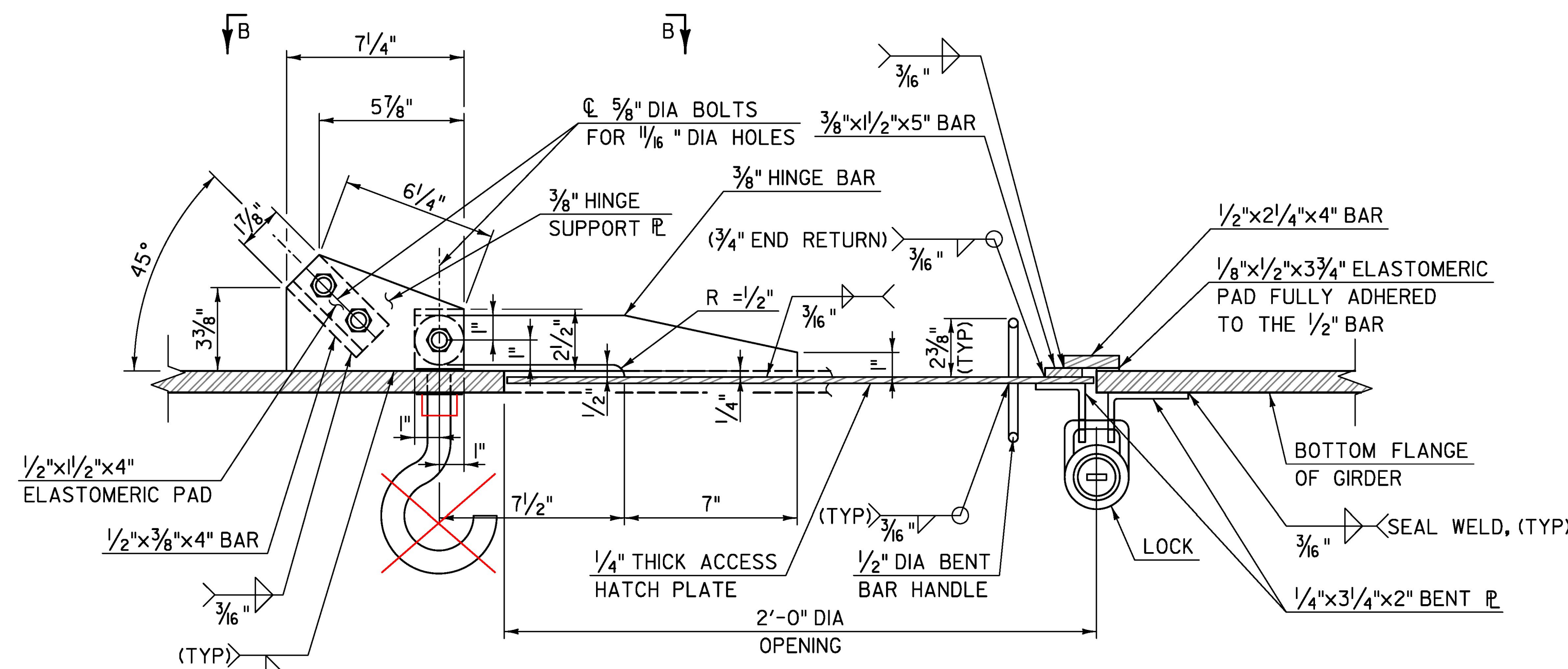
**ACCESS HATCH PLAN**

SCALE: 1/2" = 1'-0"



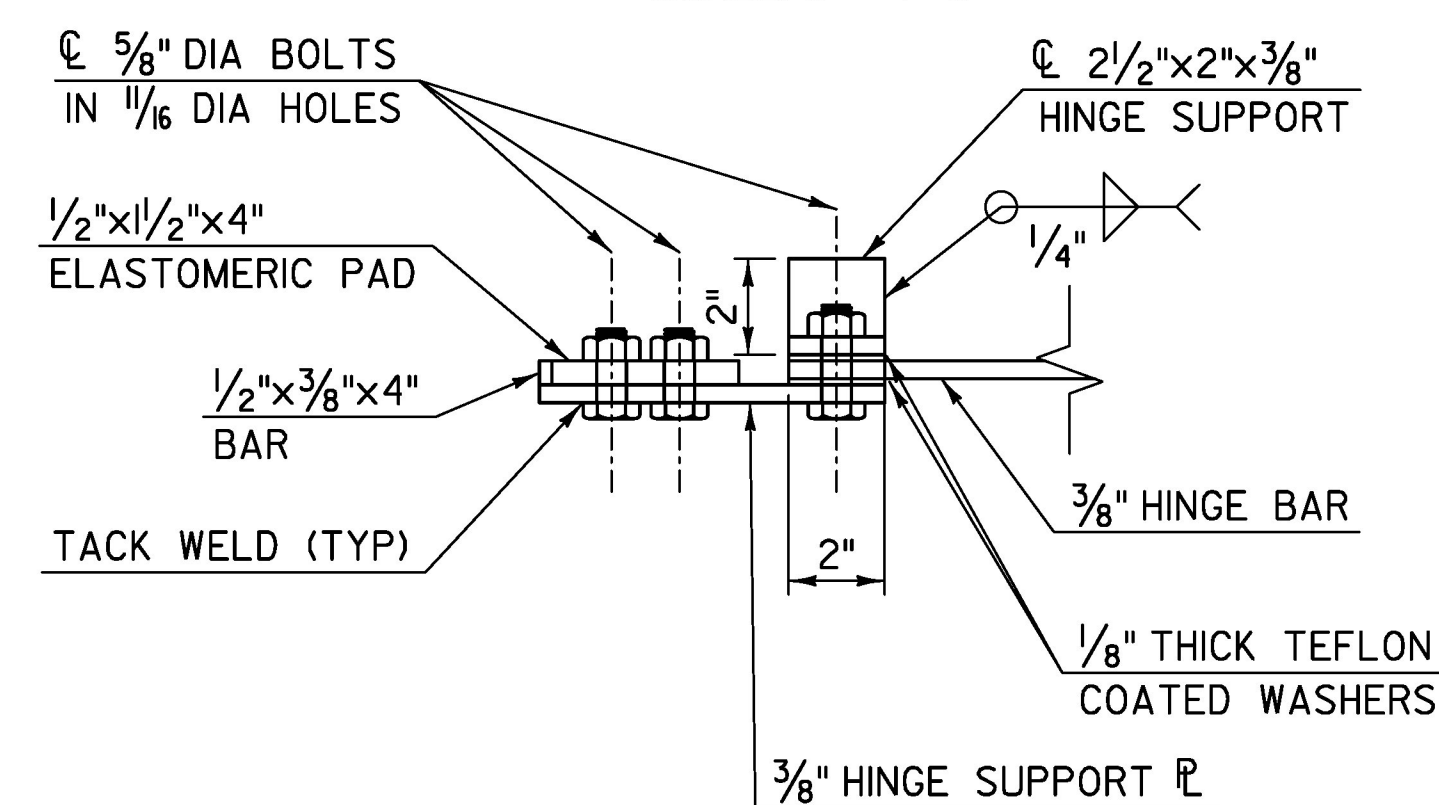
**DRAIN HOLE PLAN**

SCALE: 1/2" = 1'-0"  
(ACCESS HATCH NOT SHOWN FOR CLARITY)  
(ABUTMENT 1 SHOWN, ABUTMENT 2 SIMILAR)



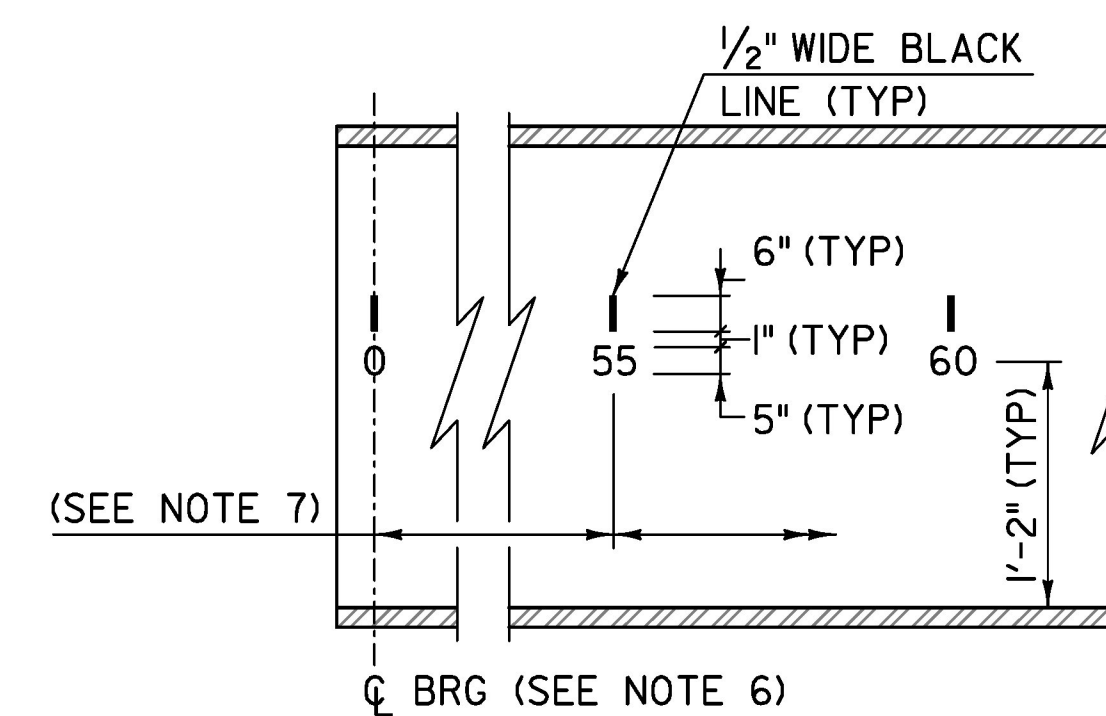
**SECTION A-A**

SCALE: 3" = 1'-0"



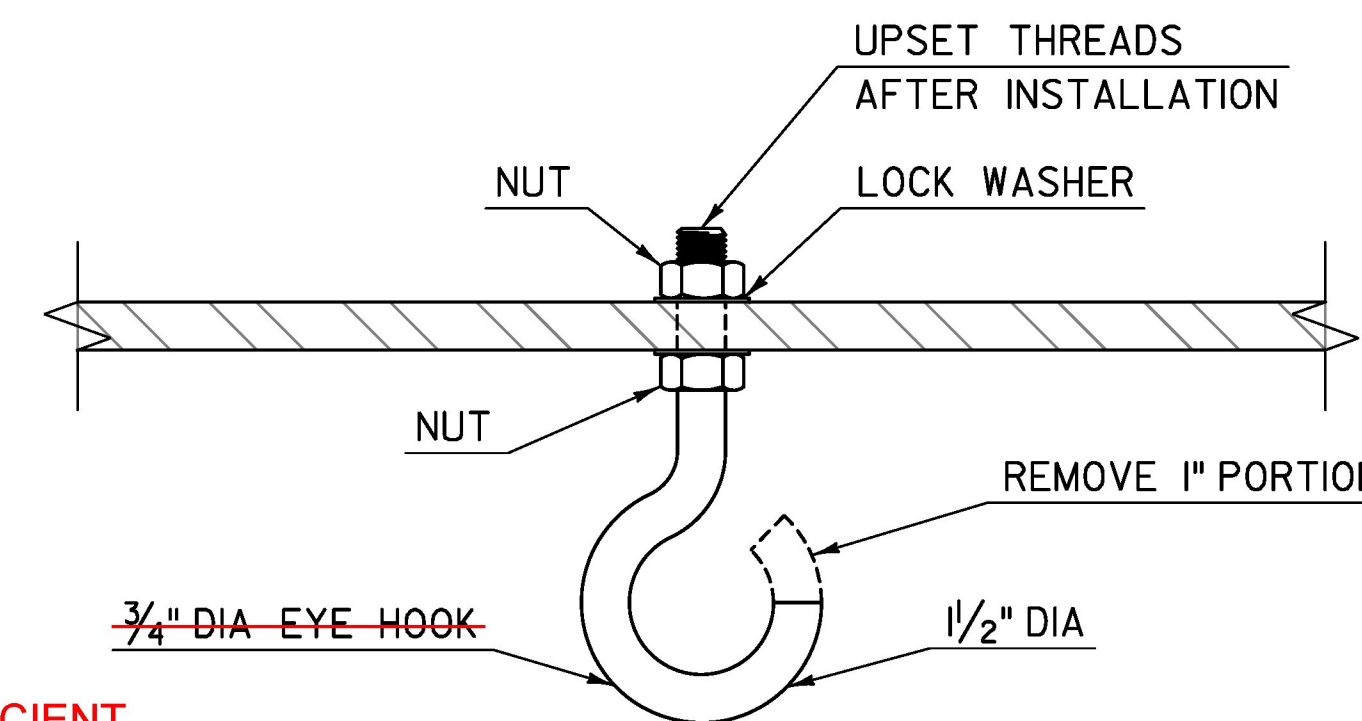
**SECTION B-B**

SCALE: 3" = 1'-0"



**INTERIOR PAINT MARKING REQUIREMENTS**

NTS



**EYE HOOK DETAIL**

NOT TO SCALE

**NOTES:**

1. ALL HATCHES SHALL OPEN TOWARDS THE BACKWALL.
2. ACCESS HATCH SHALL BE PAINTED ON BOTH SIDES WITH THE SAME COATING AS USED ON THE GIRDER.
3. ALL LOCKS SHALL BE KEYED THE SAME.
4. EYE HOOKS SHALL MEET THE REQUIREMENTS OF SUBSECTION 714.04.
5. ALL ITEMS THIS SHEET WILL BE PAID UNDER TO ITEM 900.640 "SPECIAL PROVISION (PREFABRICATED BRIDGE UNIT SUPERSTRUCTURE) (FPQ)".
6. ZERO DISTANCE REFERENCE LINE LOCATED AT ABUTMENT NO 1 CENTERLINE OF BEARING.
7. INDICATE DISTANCES SEQUENTIALLY AT FIVE FOOT INTERVALS WITHOUT INTERRUPTION, FULL LENGTH WITHIN EACH BOX GIRDER, WITH BLACK LINES AND NUMERALS ON LEFT WEB.
8. EPOXY OR ANOTHER APPROVED ADHESIVE SHALL BE USED TO ATTACH MESH TO INSIDE OF GIRDER.

PROJECT NAME: CHelsea  
PROJECT NUMBER: BHF 0169(9)

FILE NAME: z12ci50gde+2.dgn  
PROJECT LEADER: J. OLUND  
DESIGNED BY: T. POULIN  
GIRDER DETAILS 2

PLOT DATE: 8/31/2016  
DRAWN BY: S. MORGAN  
CHECKED BY: J. OLUND  
SHEET 46 OF 137

**TYLIN**INTERNATIONAL