

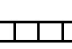



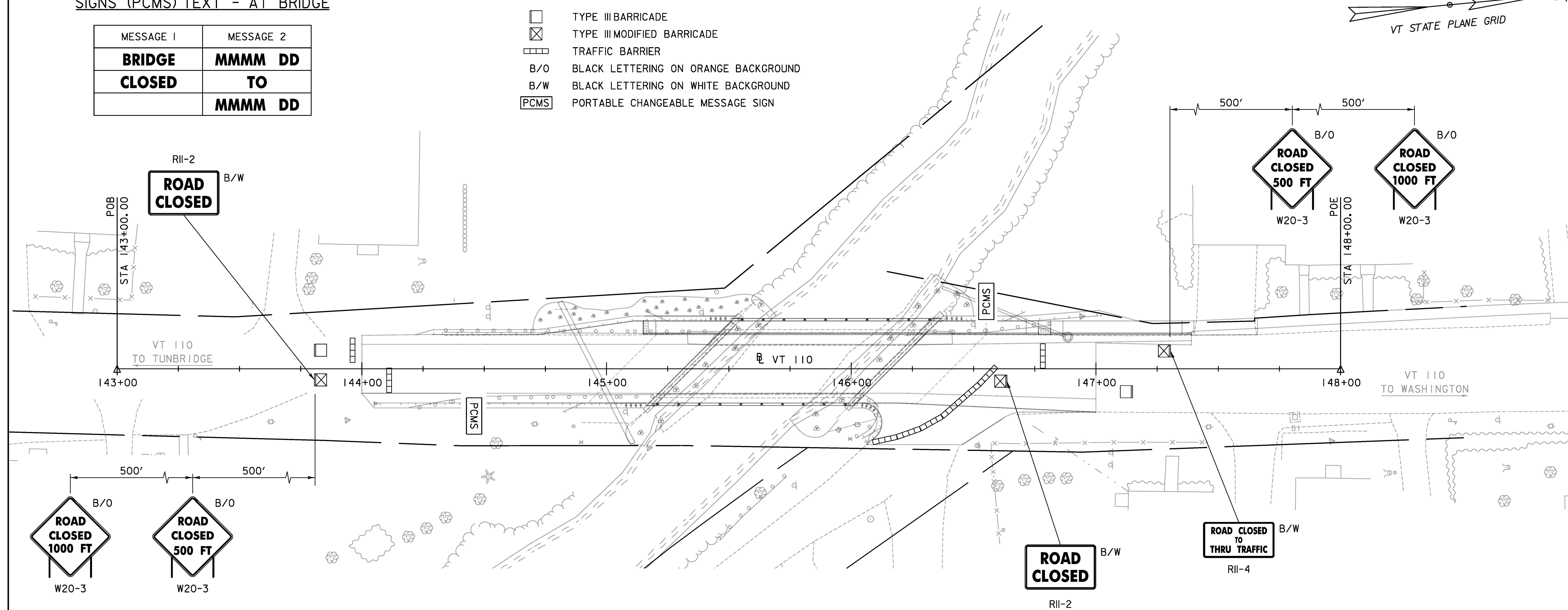
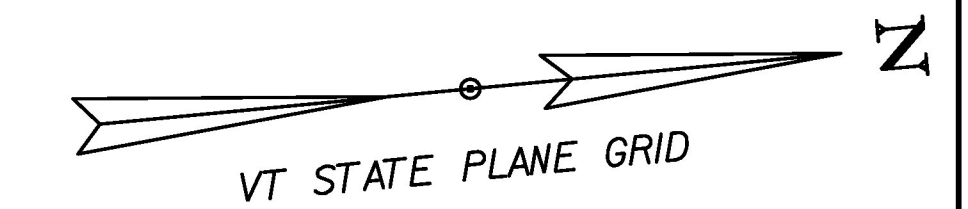


**PORTABLE CHANGEABLE MESSAGE
SIGNS (PCMS) TEXT - AT BRIDGE**

MESSAGE 1	MESSAGE 2
BRIDGE	MMMM DD
CLOSED	TO
	MMMM DD

LEGEND:

-  TYPE III BARRICADE
-  TYPE III MODIFIED BARRICADE
-  TRAFFIC BARRIER
-  B/O BLACK LETTERING ON ORANGE BACKGROUND
-  B/W BLACK LETTERING ON WHITE BACKGROUND
-  PCMS PORTABLE CHANGEABLE MESSAGE SIGN

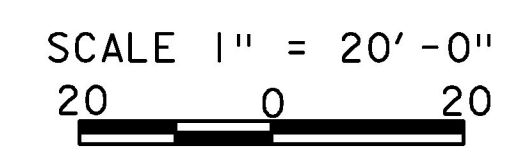


NOTES:

1. SEE REGIONAL TRAFFIC CONTROL PLANS FOR ADDITIONAL NOTES AND REQUIREMENTS.
2. THE LAYOUT AND QUANTITY OF TRAFFIC CONTROL DEVICES SHOWN IS CONCEPTUAL. THE CONTRACTOR SHALL SUBMIT FOR ACCEPTANCE A DETAILED SITE SPECIFIC TRAFFIC CONTROL PLAN IDENTIFYING BRIDGE CLOSURE METHODS AND SIGN LOCATIONS IN ACCORDANCE WITH SPECIAL PROVISION (TRAFFIC CONTROL, ALL-INCLUSIVE). PAYMENT FOR PREPARING, IMPLEMENTING, INSPECTING, MAINTAINING, AND REMOVING THE APPLICABLE TRAFFIC CONTROL PLAN AND REQUIRED TRAFFIC CONTROL DEVICES, INCLUDING BUT NOT LIMITED TO TEMPORARY TRAFFIC BARRIER, TEMPORARY PAVEMENT MARKINGS, AND SIGNING WILL BE MADE UNDER ITEM 900.645, "SPECIAL PROVISION (TRAFFIC CONTROL, ALL-INCLUSIVE)."

UNIFORMED TRAFFIC OFFICERS, FLAGGERS, AND PORTABLE CHANGEABLE MESSAGE SIGNS WILL BE PAID FOR SEPARATELY UNDER CONTRACT ITEMS 630.J0, 630.J5, AND 641.J5 RESPECTIVELY.
3. PORTABLE CHANGEABLE MESSAGE SIGNS (PCMS) SHALL BE PLACED NEAR EACH END OF THE BRIDGE 7 DAYS PRIOR TO THE START OF CONSTRUCTION TO WARN OF IMPENDING DETOURS. THESE PCMS SHALL TURNED OFF AND REMOVED FROM THE SITE OR DEPLOYED TO LOCATIONS SPECIFIED BY THE ENGINEER ONCE CONSTRUCTION HAS BEGUN.
4. ACCESS TO ALL EXISTING DRIVES AND SIDE ROADS SHALL BE MAINTAINED AT ALL TIMES DURING ALL PHASES OF CONSTRUCTION.
5. TYPE III MODIFIED BARRICADE SHALL BE TYPE III BARRICADE WITH THE ASSOCIATED SIGNING MOUNTED ON IT. ALL BARRICADES SHALL MEET "NATIONAL COOPERATIVE HIGHWAY RESEARCH PROGRAM" (NCHRP) REPORT 350 OR THE "AMERICAN ASSOCIATION OF STATE AND HIGHWAY TRANSPORTATION OFFICIALS" (AASHTO) "MANUAL FOR ASSESSING SAFETY HARDWARE" (MASH). THE APPROPRIATE RESOURCE SHALL BE DETERMINED AS DESCRIBED IN THE MASH PUBLICATION.
6. A SHUTTLE SERVICE WILL BE HIRED BY THE AGENCY TO TRANSPORT PEDESTRIANS FROM ONE SIDE OF THE BRIDGE CLOSURE TO THE OTHER FOR THE DURATION OF THE BRIDGE CLOSURE PERIOD. THE CONTRACTOR SHALL COORDINATE AND COOPERATE WITH THE SHUTTLE SERVICE AND ANY LOADING OR UNLOADING OF PEDESTRIANS ADJACENT TO THE WORK SITE. ADDITIONALLY, THE CONTRACTOR SHALL ACCOMMODATE PASSAGE OF PEDESTRIANS THROUGH THE PROJECT SITE DURING PERIODS OF ONE-WAY ALTERNATING TRAFFIC OUTSIDE OF THE BRIDGE CLOSURE PERIOD. ALL COSTS ASSOCIATED WITH THE COORDINATION AND COOPERATION WITH THE SHUTTLE SERVICE AND ACCOMMODATING PEDESTRIANS THROUGH THE PROJECT SITE OUTSIDE OF THE BRIDGE CLOSURE PERIOD WILL BE CONSIDERED INCIDENTAL TO ITEM 900.645, "SPECIAL PROVISION (TRAFFIC CONTROL, ALL-INCLUSIVE)."

LOCAL TRAFFIC CONTROL PLAN



TYLIN INTERNATIONAL

PROJECT NAME: CHelsea	PLOT DATE: 10/4/2016
PROJECT NUMBER: BHF 0169(9)	DRAWN BY: B. TOOTHAKER
FILE NAME: z12ci50localdtr.dgn	CHECKED BY: J. OLUND
PROJECT LEADER: J. OLUND	LOCAL TRAFFIC CONTROL PLAN
DESIGNED BY: B. TOOTHAKER	SHEET 25 OF 137