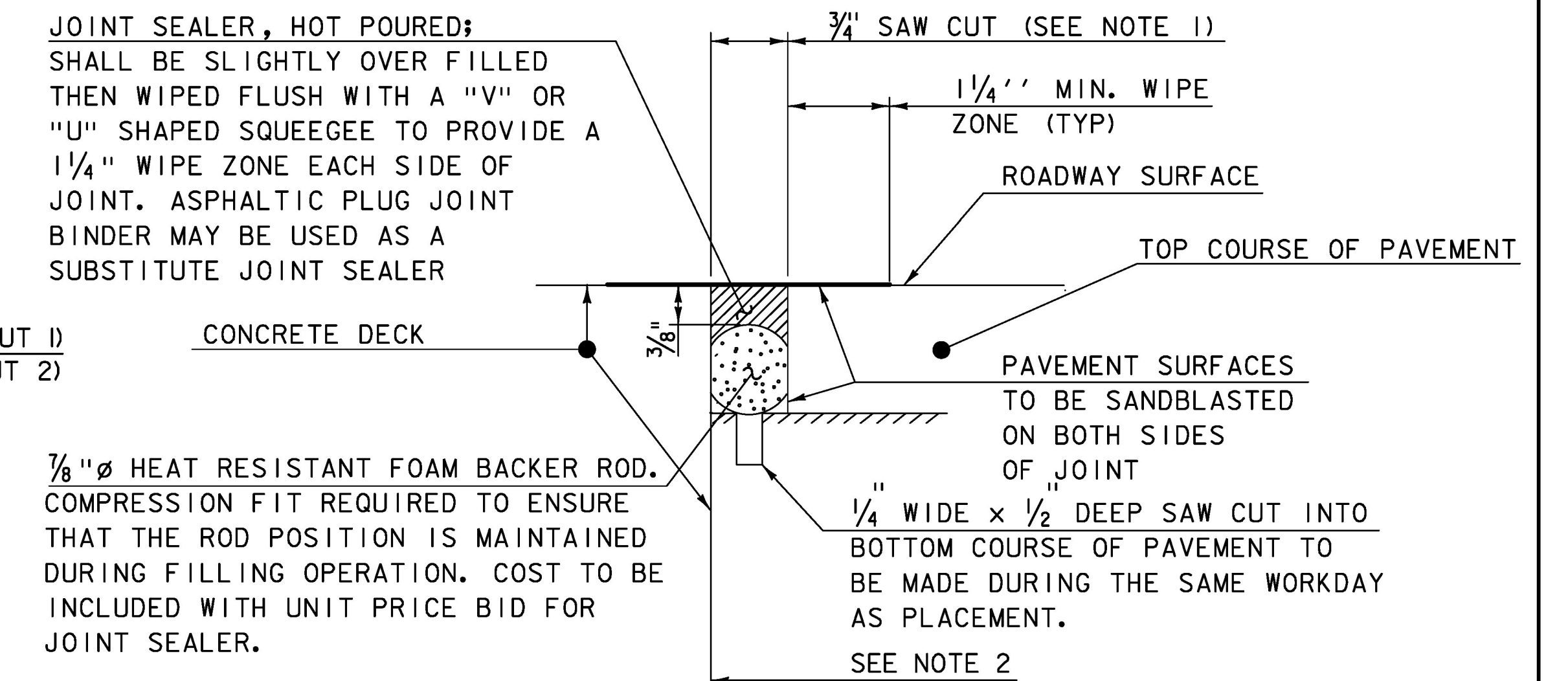


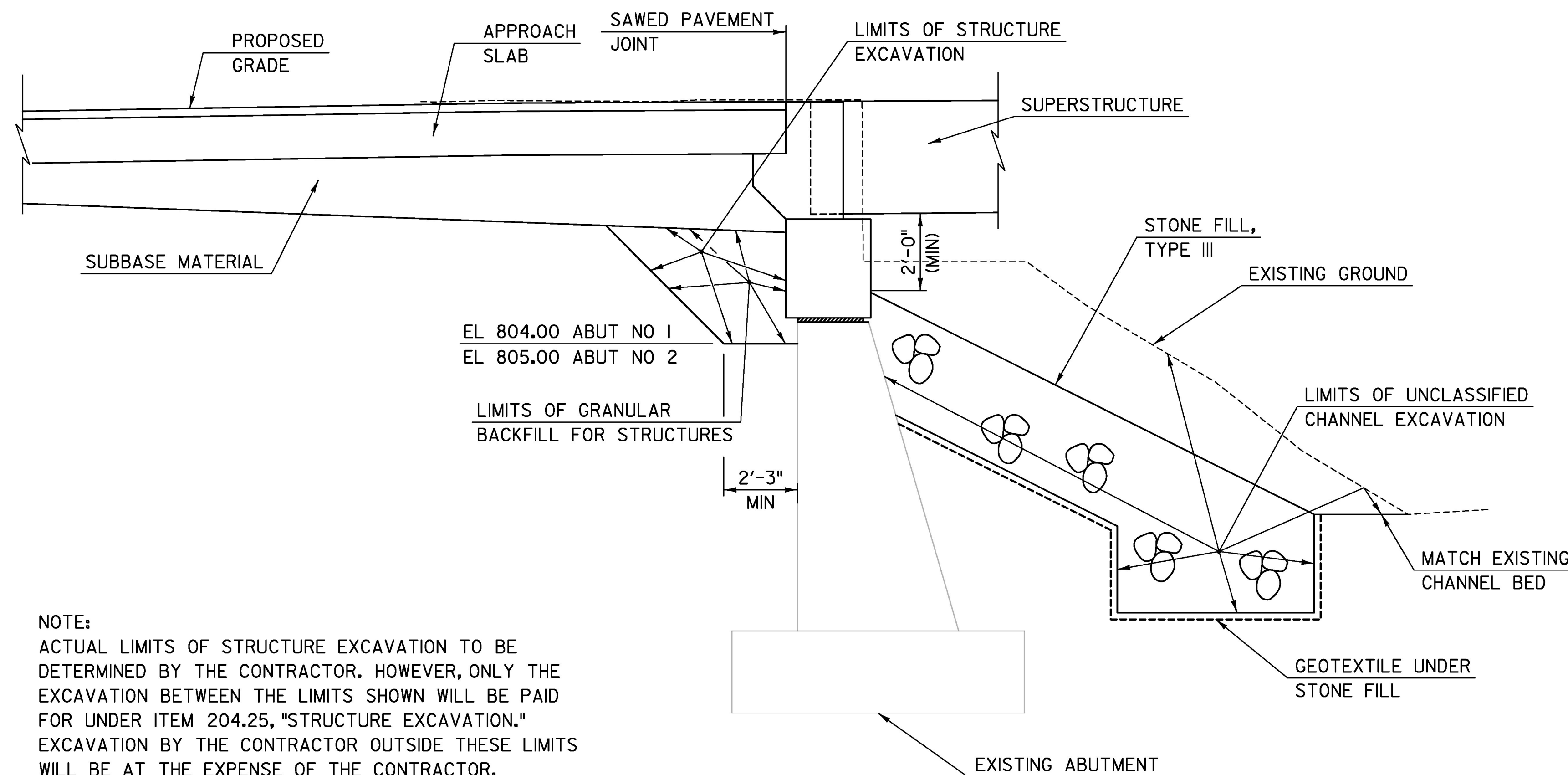
ABUTMENT REMOVAL LIMITS
SCALE: 3/8" = 1'-0"
(ABUTMENT 1 SHOWN, ABUTMENT 2 SIMILAR)

* PAYMENT WILL BE MADE UNDER ITEM 529.20, "PARTIAL REMOVAL OF STRUCTURE."



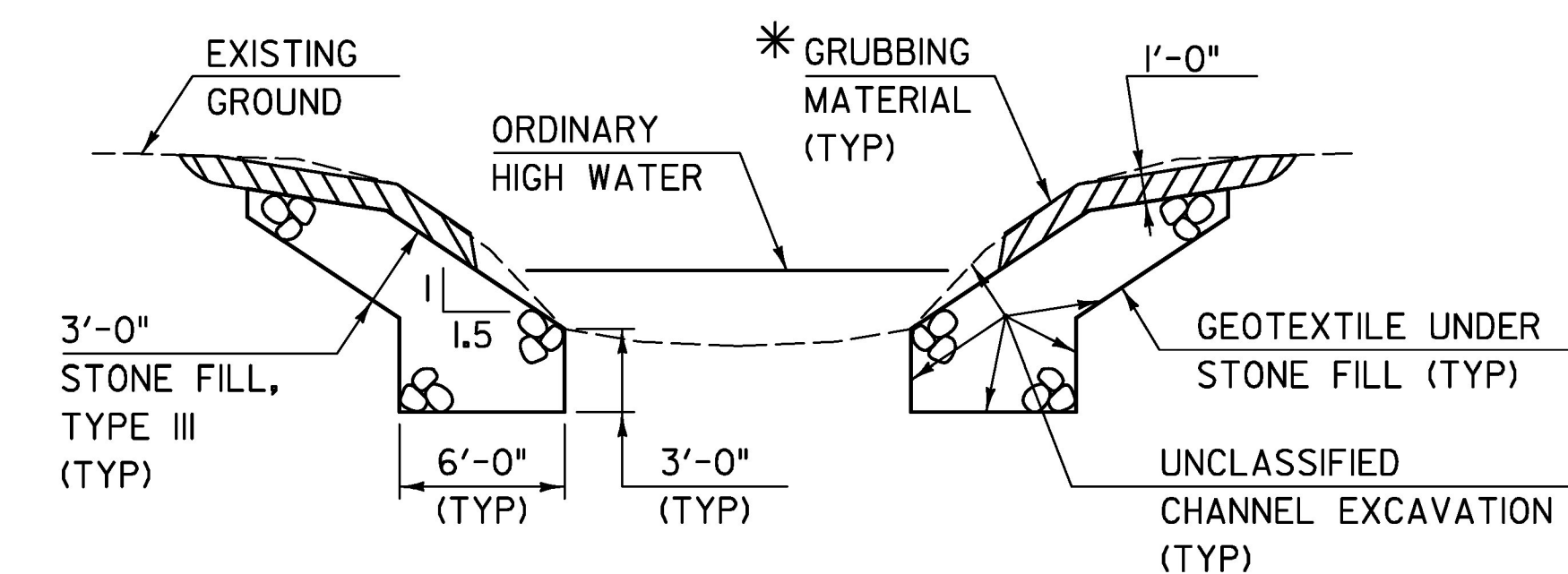
ITEM 524.II, "JOINT SEALER, HOT Poured"
SAWED PAVEMENT JOINT DETAIL
(NOT TO SCALE)

1. JOINT IS TO BE LOCATED ACCURATELY BY STRING LINING, OR OTHER MEANS, PRIOR TO PAVING. JOINT SHALL BE CUT DRY IN A SINGLE PASS AND BE SEALED WITHIN 24 HOURS OR PRIOR TO EXPOSURE TO TRAFFIC. JOINT SHALL BE CLEANED PRIOR TO APPLYING THE JOINT SEALER.
2. SAWED PAVEMENT JOINTS SHALL BE LOCATED BETWEEN THE APPROACH SLABS AND EACH END OF THE BRIDGE AND BETWEEN THE APPROACH SLABS AND ANY PAVED APRONS.



TYPICAL EARTHWORK SECTION
SCALE: 3/8" = 1'-0"

NOTE:
ACTUAL LIMITS OF STRUCTURE EXCAVATION TO BE DETERMINED BY THE CONTRACTOR. HOWEVER, ONLY THE EXCAVATION BETWEEN THE LIMITS SHOWN WILL BE PAID FOR UNDER ITEM 204.25, "STRUCTURE EXCAVATION." EXCAVATION BY THE CONTRACTOR OUTSIDE THESE LIMITS WILL BE AT THE EXPENSE OF THE CONTRACTOR.



TYPICAL CHANNEL SECTION
(NOT TO SCALE)

* GRUBBING MATERIAL SHALL NOT BE PLACED ON THE STONE FILL IN THE AREA UNDER THE BRIDGE. WHENEVER CHANNEL SLOPE INTERSECTS ROADWAY SUBBASE, GRUBBING MATERIAL SHALL BEGIN AT THE BOTTOM OF SUBBASE.

LEGEND:
NF = NEAR FACE
FF = FAR FACE

TYLIN INTERNATIONAL	PROJECT NAME: CHelsea	PLOT DATE: 8/31/2016
	PROJECT NUMBER: BHF 0169(9)	DRAWN BY: B. TOOTHAKER
	FILE NAME: z12ci50+typ2.dgn PROJECT LEADER: J. OLUND DESIGNED BY: B. TOOTHAKER TYPICAL SECTIONS AND DETAILS 2	CHECKED BY: J. OLUND SHEET 15 OF 137