

# STATE OF VERMONT AGENCY OF TRANSPORTATION



## PROPOSED IMPROVEMENT BRIDGE PROJECT

TOWN OF CHELSEA  
COUNTY OF ORANGE

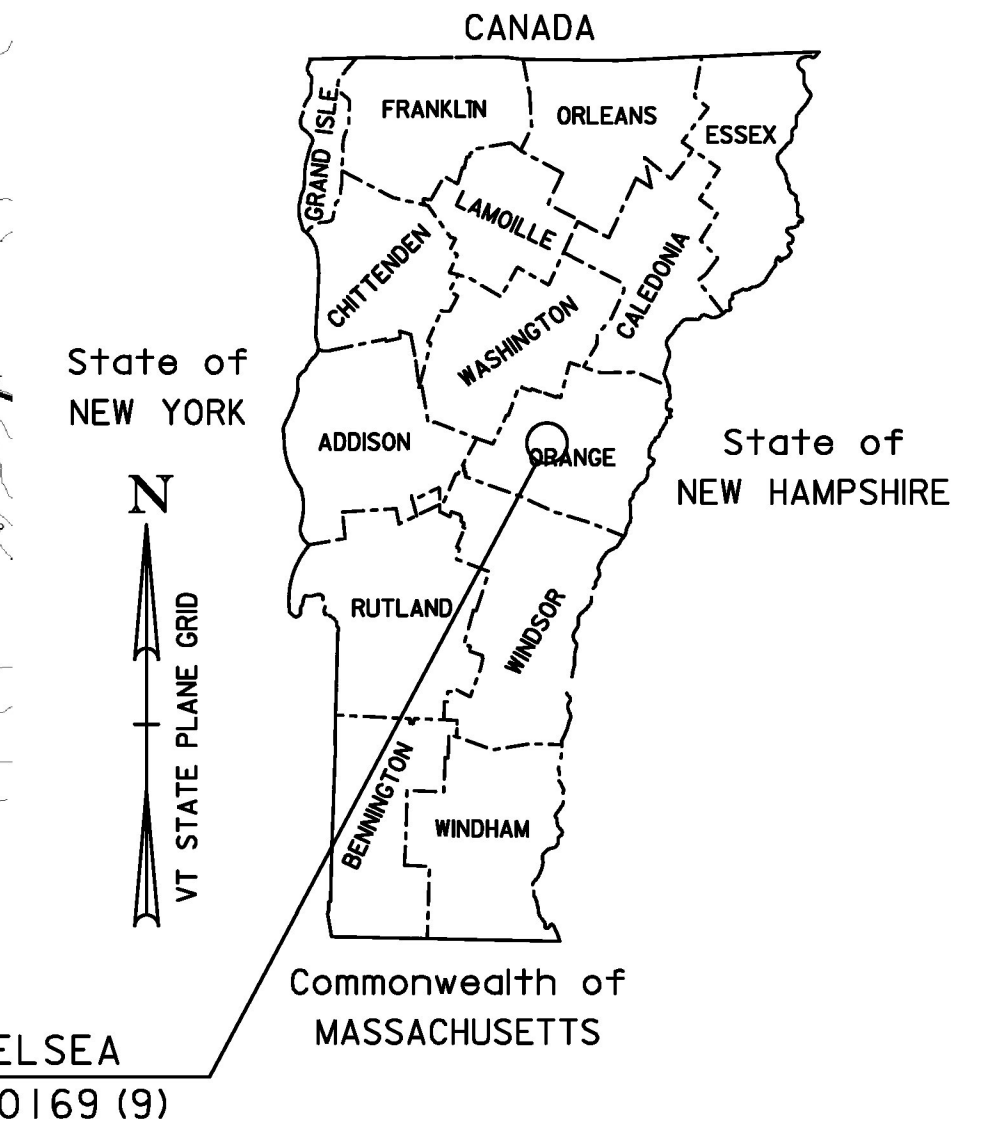
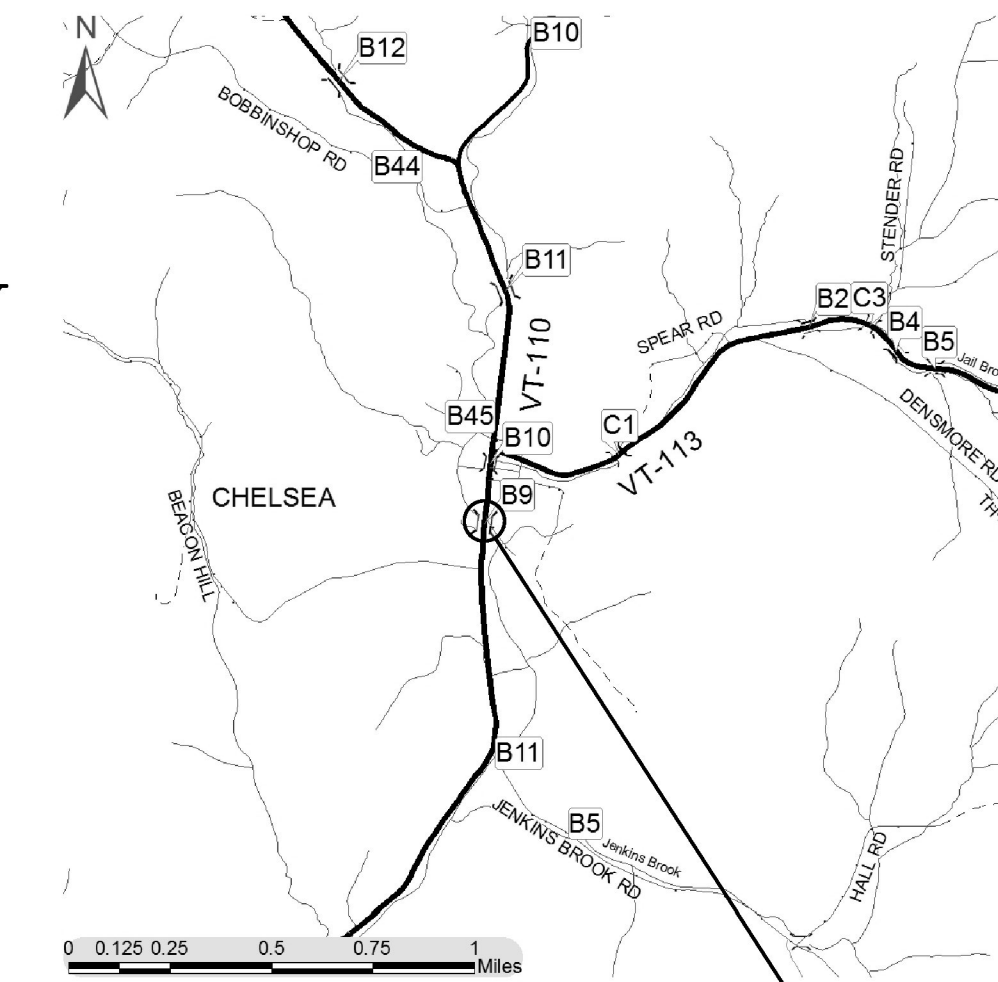
ROUTE NO : VT ROUTE 110, RURAL MAJOR COLLECTOR

BRIDGE NO : 9

PROJECT LOCATION: 0.2 MILES SOUTH OF THE JUNCTION WITH VT ROUTE 113

PROJECT DESCRIPTION: REMOVAL AND REPLACEMENT OF THE SUPERSTRUCTURE OF BRIDGE 9

LENGTH OF STRUCTURE: 84.68 FEET  
LENGTH OF ROADWAY: 115.32 FEET  
LENGTH OF PROJECT: 200.00 FEET



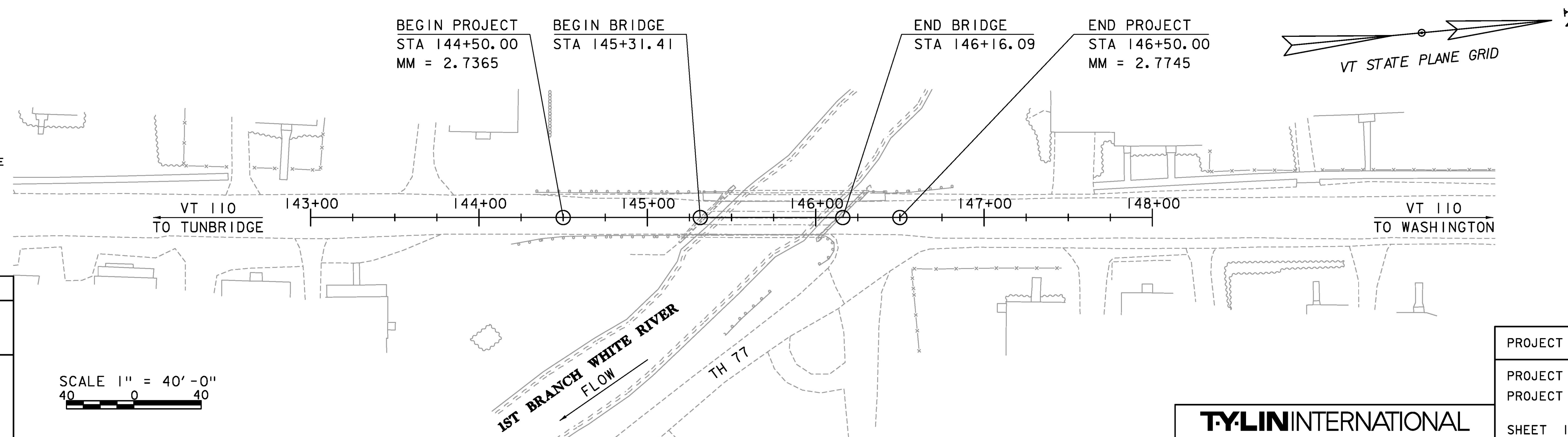
CONSTRUCTION IS TO BE CARRIED ON IN ACCORDANCE WITH THESE PLANS AND THE STANDARD SPECIFICATIONS FOR CONSTRUCTION DATED 2011, AS APPROVED BY THE FEDERAL HIGHWAY ADMINISTRATION ON JULY 20, 2011 FOR USE ON THIS PROJECT, INCLUDING ALL SUBSEQUENT REVISIONS AND SUCH REVISED SPECIFICATIONS AND SPECIAL PROVISIONS AS ARE INCORPORATED IN THESE PLANS.

QUALITY ASSURANCE PROGRAM : LEVEL 2

SURVEYED BY : R. GILMAN  
SURVEYED DATE : 05-21-2012

DATUM  
VERTICAL : NAVD 88  
HORIZONTAL : NAD 83 (07)

SCALE 1" = 40'-0"  
40 0 40



PROJECT MANAGER : JENNIFER FITCH, P. E.

PROJECT NAME : CHELSEA  
PROJECT NUMBER : BHF 0169 (9)

SHEET 12 OF 137 SHEETS

**TYLIN INTERNATIONAL**