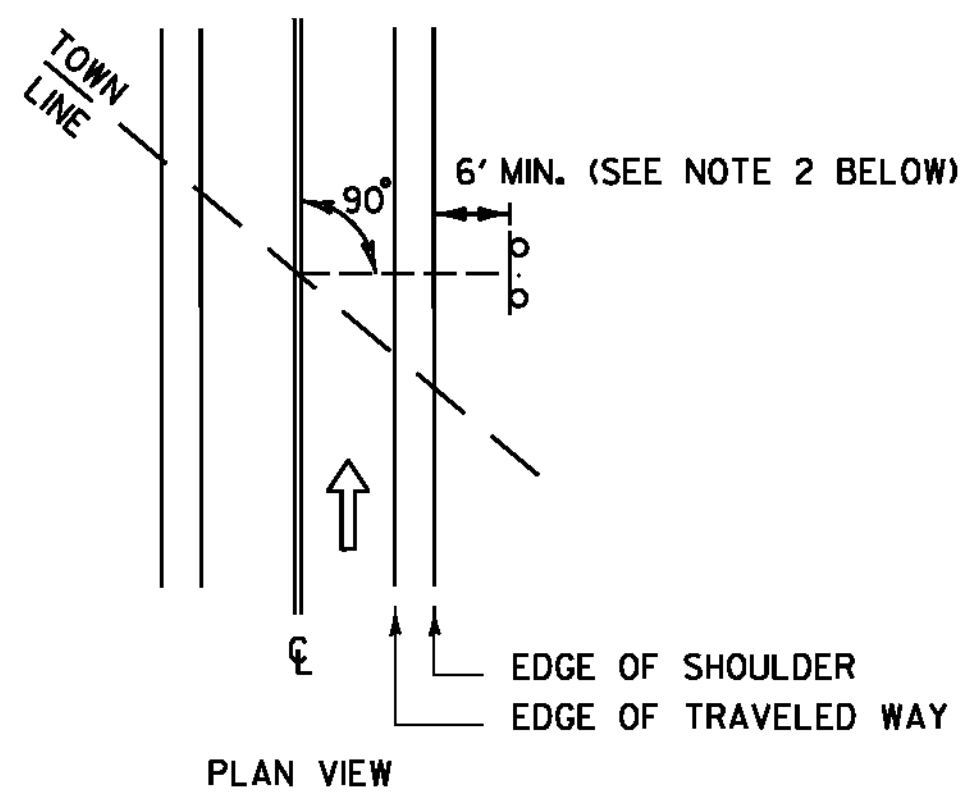
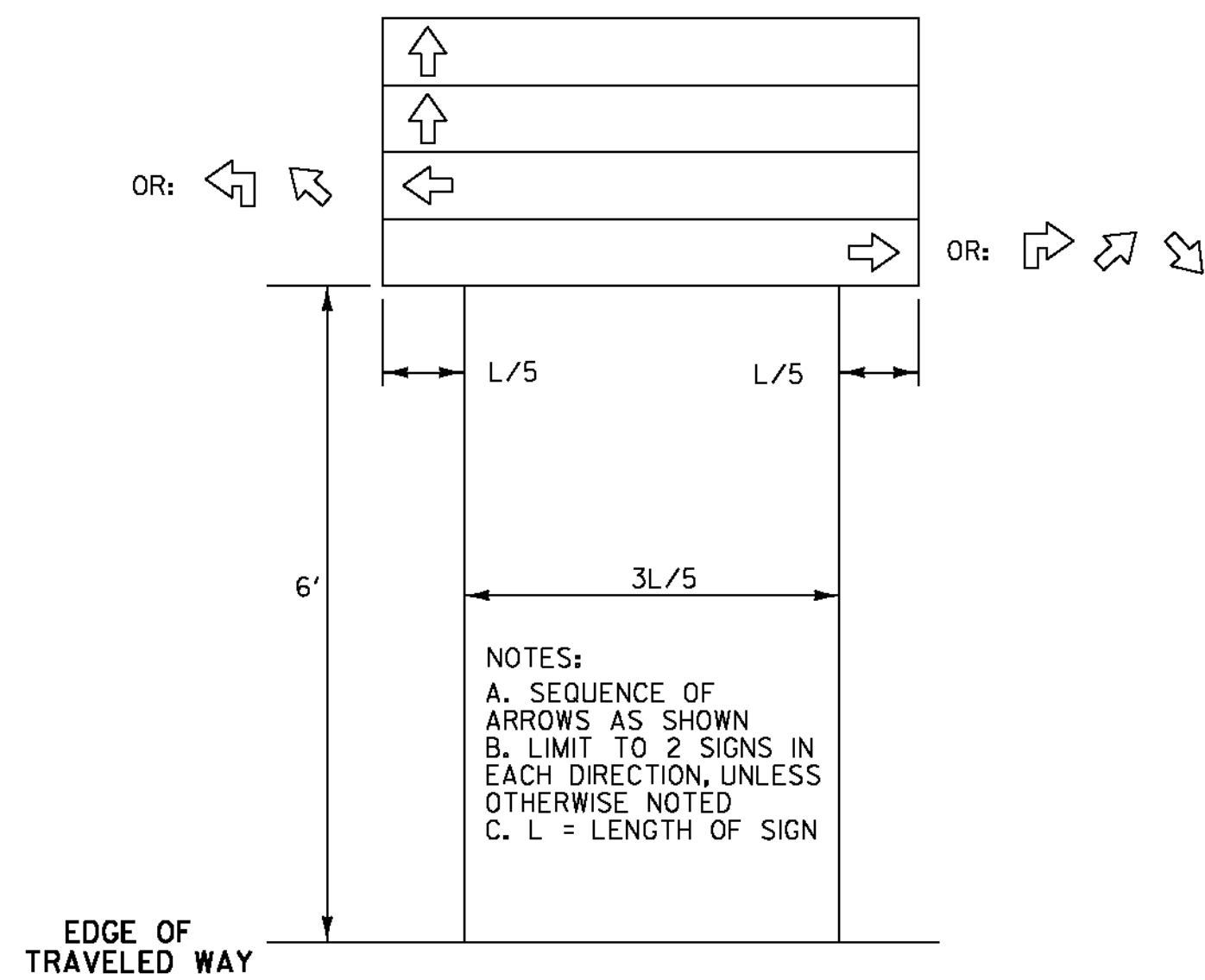


WHEN CROSSING COUNTY BOUNDARIES, AN ADDITIONAL COUNTY LINE SIGN (VD-025) SHALL BE MOUNTED BELOW THE TOWN LINE SIGN (VD-024), MAINTAINING A SEVEN FOOT CLEARANCE.



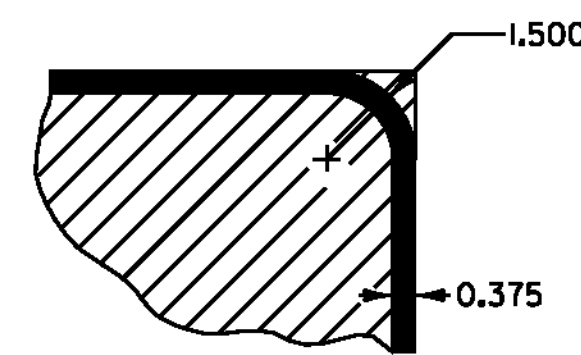
TOWN /COUNTY LINE (VD-024 /VD-025) INSTALLATION:

1. THE SIGN SHALL BE MOUNTED PARALLEL WITH THE ROADWAY, NORMALLY ON THE RIGHT SIDE TRAVELING WEST TO EAST OR SOUTH TO NORTH.
2. FOR POST-MOUNTED SIGNS, THE MINIMUM LATERAL OFFSET SHOULD BE TWELVE FEET FROM THE EDGE OF THE TRAVELED WAY. IF A SHOULDER WIDER THAN SIX FEET EXISTS, THE MINIMUM LATERAL OFFSET FOR POST-MOUNTED SIGNS SHOULD BE SIX FEET FROM THE EDGE OF SHOULDER.

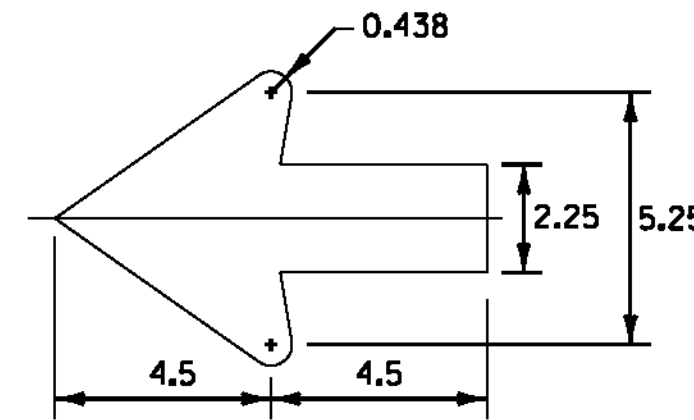


DESTINATION SIGNS (VD1-1, VD1-1A, VD1-2, VD2-1) ASSEMBLY:

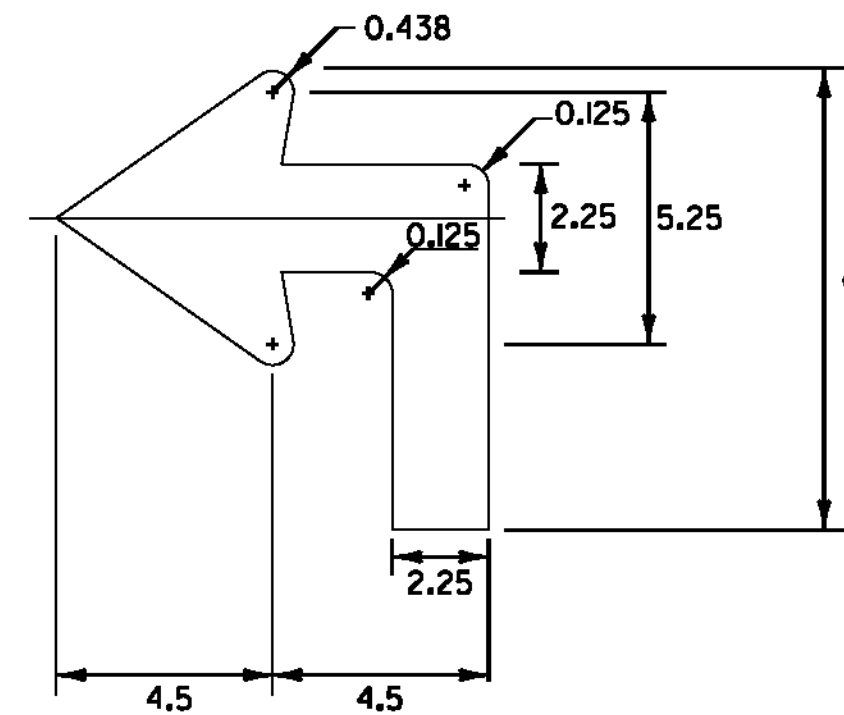
1. THE DESTINATION SIGN DETAILS SHOWN ON SHEETS 9 AND 10 SHALL HAVE WHITE RETROREFLECTIVE ASTM D 4956 TYPE III OR IV TEXT, ARROWS AND BORDERS ON A GREEN RETROREFLECTIVE ASTM D 4956 TYPE III OR IV BACKGROUND.
2. FONT SPACING SHOWN ON AN INDIVIDUAL SIGN DETAIL MAY BE ADJUSTED SLIGHTLY TO MEET DIMENSION REQUIREMENT(S).
3. DIMENSIONS SHOWN ON THE INDIVIDUAL SIGN DETAILS MAY BE ADJUSTED SLIGHTLY TO ACCOMMODATE VARIOUS MANUFACTURER'S LETTER WIDTHS.



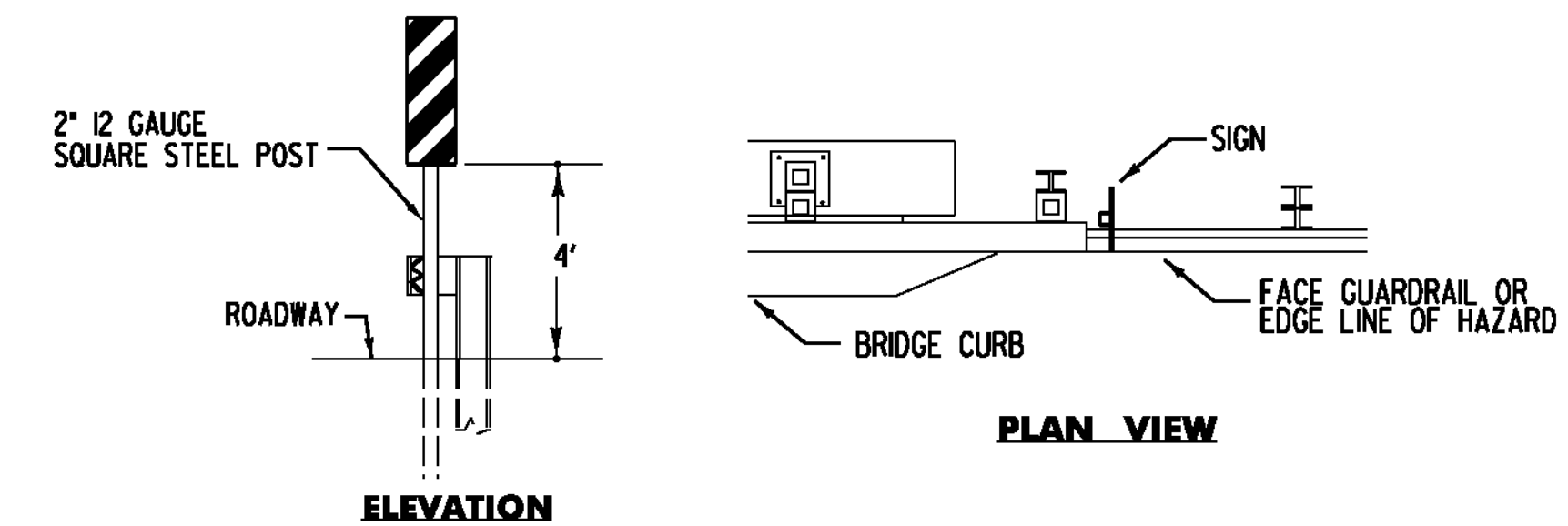
BORDER DETAIL
NOTE: TRIM CORNERS FOR ALUMINUM SIGNS



STANDARD SHSM 2.25" ARROW

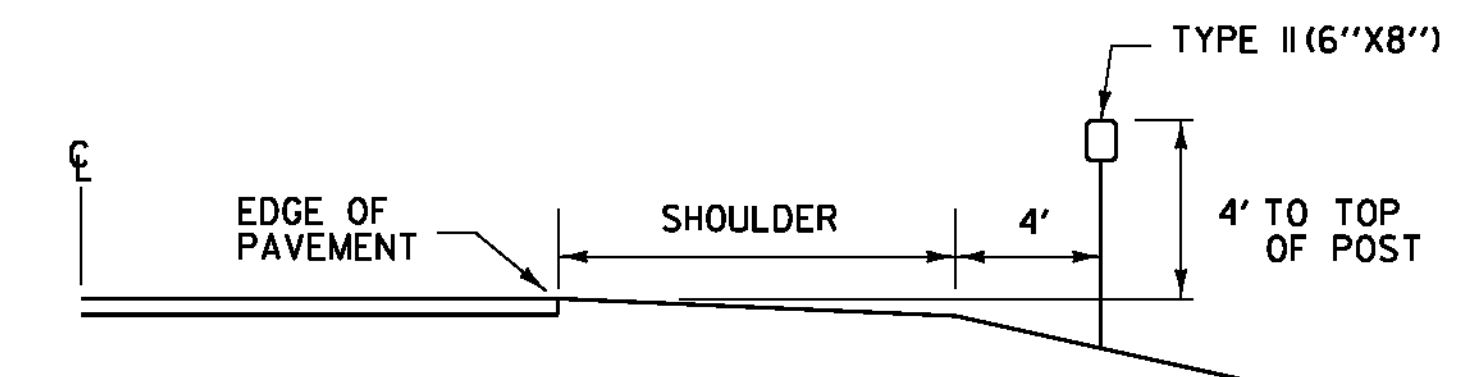


ADVANCE 2.25" ARROW

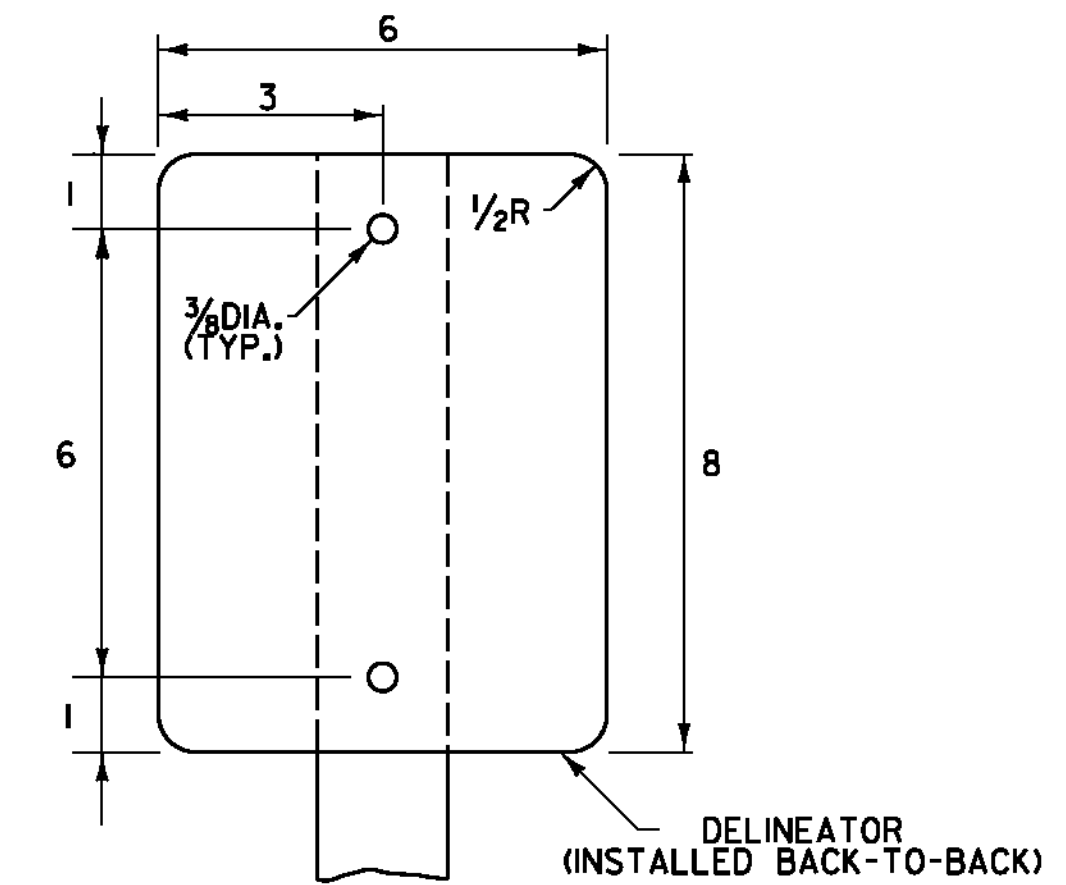


OBJECT MARKER (OM3-L or OM3-R) INSTALLATION:

1. OBJECT MARKER SHOULD BE INSTALLED SO THAT THE INSIDE EDGE OF THE SIGN IS AS CLOSE AS POSSIBLE TO THE FACE OF GUARDRAIL OR INSIDE EDGE OF THE HAZARD.
2. THE SIGN SHALL BE MOUNTED SO THE DIAGONAL STRIPES SLOPE DOWNWARDS TOWARD THE ROAD CENTERLINE.
3. ASSEMBLY HARDWARE SHALL CONFORM TO SUBSECTION 750.12 (a). RIVETS SHALL NOT BE USED.
4. SIGN BASE MATERIAL SHALL BE 0.100" FLAT SHEET ALUMINUM.
5. MOUNTING HARDWARE FOR SIGNS ATTACHED TO ABUTMENTS OR HAZARDS SHALL BE APPROVED BY THE ENGINEER.
6. PAYMENT FOR ALL MATERIALS AND LABOR NECESSARY TO ATTACH AN OBJECT MARKER SIGN TO ANYTHING OTHER THAN A SIGN POST WILL BE PAID FOR AS ONE 15 FT LONG 2.0" SQUARE STEEL SIGN POST.



DELINEATOR PLACEMENT



TYPE II (6"x8") DELINEATOR

ALL DIMENSIONS SHOWN IN INCHES, EXCEPT WHERE NOTED.

DELINEATOR LOCATIONS:

TOWN:	DIRECTION:	MILE POINT:	NO. OF NEW TYPE II DELINEATORS (POSTS):	NO. OF REMOVALS:	POST SPACING:	SHEET:
POULTNEY	SB	1.14 - 1.07	16 (8)	(NONE)	50 FT	75

DELINEATORS WITH RETROREFLECTIVE SHEETING:

1. MATERIAL FOR A TYPE II (6"x8") DELINEATOR PANELS SHALL BE A 0.063" ALUMINUM BACKING WITH WHITE ASTM D 4956 TYPE III OR IV RETROREFLECTIVE SHEETING APPLIED TO ONE SIDE.
2. ALL TYPE II (6"x8") DELINEATOR POSTS SHALL BE 1.75" SQUARE STEEL, 1.88 LB/FT (14 GAUGE) WITH A 12 GAUGE ANCHOR, ANCHOR REVEAL OF 2" MAXIMUM ABOVE GRADE.
3. DELINEATOR POSTS SHALL HAVE A MINIMUM EMBEDMENT OF 2'-6" IN THE GROUND.
4. A DELINEATOR ASSEMBLY SHALL CONSIST OF A SINGLE POST AND ANCHOR WITH TWO TYPE II RETROREFLECTIVE PANELS AND ASSOCIATED ASSEMBLY HARDWARE.
5. ALL WORK ASSOCIATED WITH INSTALLING NEW TYPE II (6"x8") DELINEATORS SHALL BE PAID FOR UNDER ITEM 676.10 DELINEATOR WITH STEEL POST.

NOT TO SCALE

PROJECT NAME:	STATEWIDE SW REGION
PROJECT NUMBER:	STPG SIGN (4)
FILE NAME:	I2CI18.SD.1
PROJECT LEADER:	A. GAMBLE
DESIGNED BY:	J. KELLY
SIGN DETAILS I	
PLOT DATE:	13-FEB-2013
DRAWN BY:	J. KELLY
CHECKED BY:	A. GAMBLE
SHEET	4 OF 97