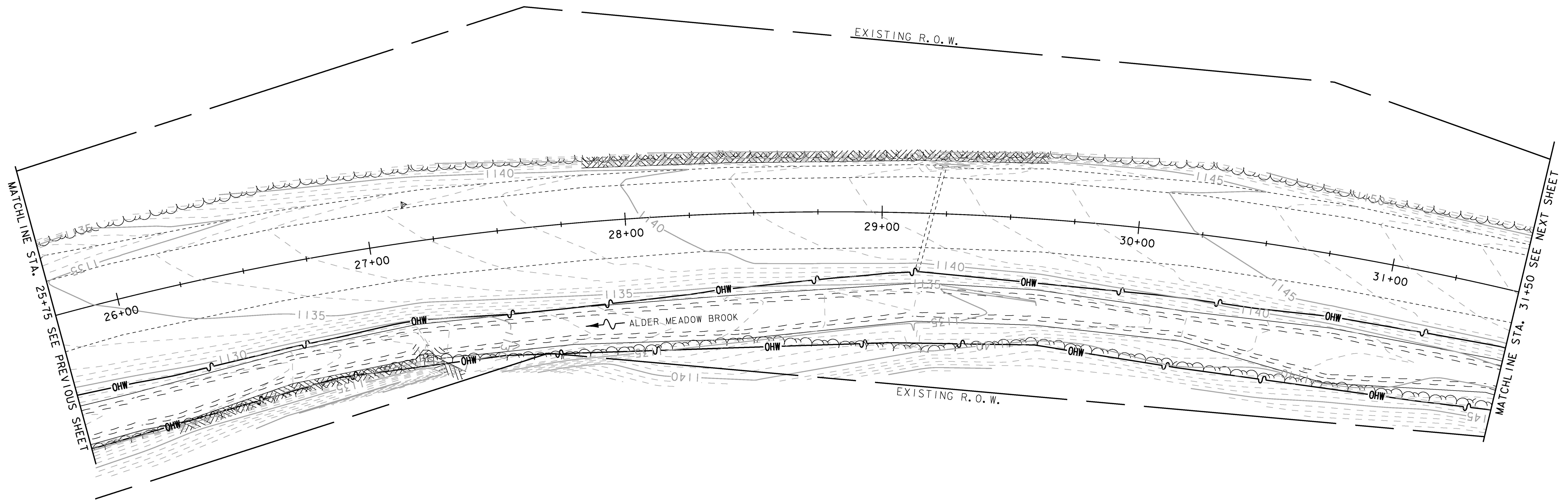


SOIL INFORMATION:
 LYMAN-BERKSHIRE VERY ROCKY COMPLEX
 K-FACTOR = 0.27/0.31, 20%-50% SLOPES
 ERODIBILITY: LOW TO MODERATE
 HYDROLOGICAL SOIL GROUP: D/B



SOIL INFORMATION:
 LYMAN-BERKSHIRE VERY ROCKY COMPLEX
 K-FACTOR = 0.27/0.31, 20%-50% SLOPES
 ERODIBILITY: LOW TO MODERATE
 HYDROLOGICAL SOIL GROUP: D/B



PROJECT NAME: GRANVILLE	PLOT DATE: 7/8/2015
PROJECT NUMBER: ER STP 013-4 (40)	DRAWN BY: B. BRESLEND
FILE NAME: z12b520EPSC_bdr.dgn	CHECKED BY: J. TUCKER
DESIGNED BY: B. BRESLEND	SHEET 45 OF 141
EPSC EXISTING CONDITIONS SHEET 6	

MATCHLINE STA. 25+75 SEE PREVIOUS SHEET

MATCHLINE STA. 31+50 SEE NEXT SHEET