

13 STA. 44+64.57 RT 18.25' REMOVE EXISTING DI  
 STA. 44+64.57 RT 18.25' INSTALL NEW PRECAST  
 DI WITH PROPOSED RIM = 1184.00'  
 CONNECT WITH THE EXISTING 18" CMP  
 AT INV. 1180.16'

**COD #2 - Replace existing 18" CMP  
 (DN13) with new 18" x 88' CPEP**

TEMPORARY 4 INCH WHITE LINE, PAINT  
 STA. 42+75.00 - STA. 48+25.00 (SOLID LT & RT)

TEMPORARY 4 INCH YELLOW LINE, PAINT  
 STA. 42+75.00 - STA. 48+25.00 (SOLID LT & RT)

DURABLE 4 INCH WHITE LINE (SEE OPTION ITEMS)  
 STA. 42+75.00 - STA. 48+25.00 (SOLID LT & RT)

DURABLE 4 INCH YELLOW LINE (SEE OPTION ITEMS)  
 STA. 42+75.00 - STA. 48+25.00 (SOLID LT & RT)

REMOVING SIGNS  
 AS SHOWN - 9

ERECTING SALVAGED SIGNS  
 AS SHOWN - 3

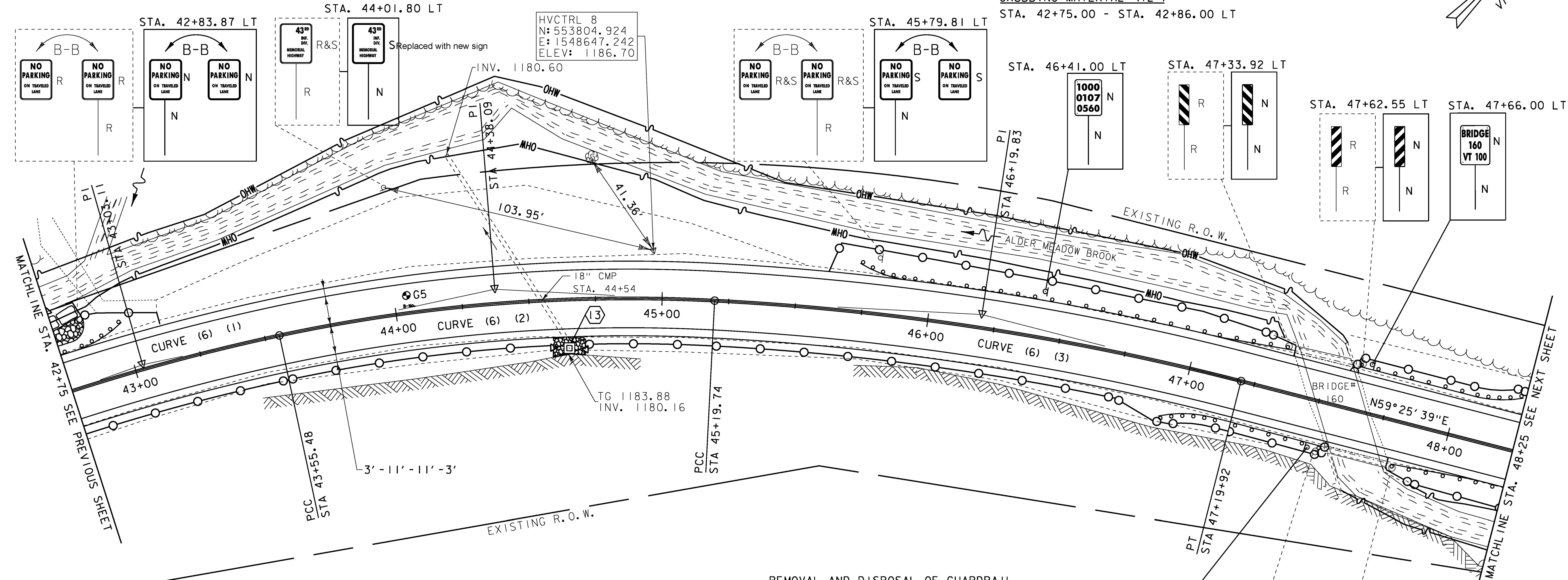
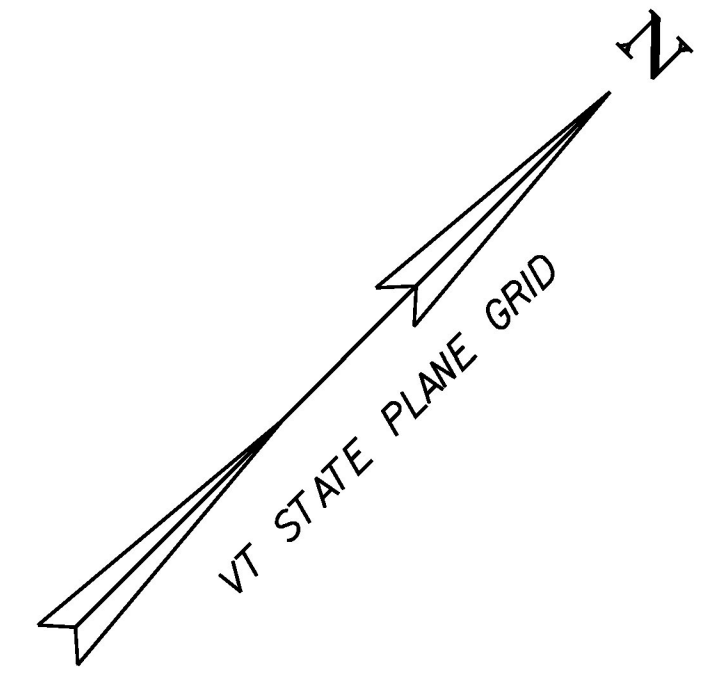
STONE FILL, TYPE I  
 STA. 44+59.00 - STA. 44+70.00 RT

STONE FILL, TYPE II  
 STA. 42+75.00 - STA. 42+86.00 LT

RIPRAP, HEAVY TYPE  
 STA. 42+75.00 - STA. 42+86.00 LT

GEOTEXTILE UNDER STONE FILL  
 STA. 44+59.00 - STA. 44+70.00 RT

GRUBBING MATERIAL (12")  
 STA. 42+75.00 - STA. 42+86.00 LT



REMOVAL AND DISPOSAL OF GUARDRAIL  
 STA. 42+75.00 - STA. 42+90.00 LT  
 STA. 45+75.00 - STA. 47+35.25 LT  
 STA. 47+29.00 - STA. 47+55.00 RT  
 STA. 47+61.50 - STA. 48+24.00 LT  
 STA. 47+81.75 - STA. 48+25.00 RT

STEEL BEAM GUARDRAIL, GALVANIZED  
 STA. 46+10.25 - STA. 47+10.25 LT  
 STA. 48+06.75 - STA. 48+25.00 RT

HD STEEL BEAM GUARDRAIL, GALVANIZED  
 STA. 47+10.25 - STA. 47+35.25 LT  
 STA. 47+30.00 - STA. 47+55.00 RT  
 STA. 47+61.50 - STA. 47+86.50 LT  
 STA. 47+81.75 - STA. 48+06.75 RT

MANUFACTURED TERMINAL SECTION, FLARED  
 STA. 42+75.00 - STA. 42+99.75 LT  
 STA. 45+72.75 - STA. 46+10.25 LT  
 STA. 46+92.50 - STA. 47+30.00 RT  
 STA. 47+86.50 - STA. 48+24.00 LT

CURVE (6)  
 DELTA = 33°59'07"  
 D = 7°09'43" (1) D = 9°10'02" (2) D = 5°43'47" (3)  
 R = 800.00' (1) R = 625.00' (2) R = 999.98 (3)  
 T = 225.33' (1) T = 257.48' (2)  
 L = 104.88' (1) L = 164.26' (2) L = 200.13' (3)  
 E = 31.13'

SIGN LEGEND  
 R = REMOVE  
 R&S = REMOVE AND SALVAGE  
 RET = RETAIN  
 S = SALVAGED  
 N = NEW  
 B-B = BACK TO BACK  
 --- = EXISTING  
 — = NEW



PROJECT NAME: GRANVILLE  
 PROJECT NUMBER: ER STP 013-4 (40)

z12b520bdr.dgn  
 PROJECT LEADER: J. TUCKER  
 DESIGNED BY: B. BRESLEND  
 PROJECT LAYOUT SHEET 9

PLOT DATE: 7/8/2015  
 DRAWN BY: B. BRESLEND  
 CHECKED BY: J. TUCKER  
 SHEET 33 OF 141