

8 STA. 33+15.03 LT 17.7' REMOVE EXISTING DI
 STA. 33+15.03 LT 20.0' INSTALL 4' X 6' PRECAST
 DROP INLET WITH TWO CAST IRON GRATES (TYPE E)
 RIM = 1150.40'
 REPLACE EXISTING 18" CMP WITH
 NEW 24" CPEP (SL) FROM NEW DI TO
 STA. 33+13.46 RT 26.0'
 LENGTH = 44'-0"
 PROPOSED INV. @ DI = 1146.90'
 PROPOSED INV. OUT = 1144.70'

TEMPORARY 4 INCH WHITE LINE, PAINT
 STA. 31+50.00 - STA. 37+25.00 (SOLID LT & RT)

TEMPORARY 4 INCH YELLOW LINE, PAINT
 STA. 31+50.00 - STA. 37+25.00 (SOLID LT & RT)

DURABLE 4 INCH WHITE LINE (SEE OPTION ITEMS)
 STA. 31+50.00 - STA. 37+25.00 (SOLID LT & RT)

DURABLE 4 INCH YELLOW LINE (SEE OPTION ITEMS)
 STA. 31+50.00 - STA. 37+25.00 (SOLID LT & RT)

REMOVAL AND DISPOSAL OF GUARDRAIL
 STA. 31+50.00 - STA. 36+30.00 RT
 STA. 35+98.00 - STA. 36+49.50 LT
 STA. 36+56.50 - STA. 37+25.00 RT
 STA. 36+74.75 - STA. 37+25.00 LT

STEEL BEAM GUARDRAIL, GALVANIZED
 STA. 31+50.00 - STA. 36+05.00 RT
 STA. 36+81.50 - STA. 37+19.00 RT
 STA. 36+99.75 - STA. 37+25.00 LT

HD STEEL BEAM GUARDRAIL, GALVANIZED
 STA. 36+05.00 - STA. 36+30.00 RT
 STA. 36+24.50 - STA. 36+49.50 LT
 STA. 36+56.50 - STA. 36+81.50 RT
 STA. 36+74.75 - STA. 36+99.75 LT

MANUFACTURED TERMINAL SECTION, FLARED
 STA. 35+87.00 - STA. 36+24.50 LT
 STA. 37+19.00 - STA. 37+25.00 RT

STONE FILL, TYPE I
 STA. 33+09.00 - STA. 33+21.00 LT

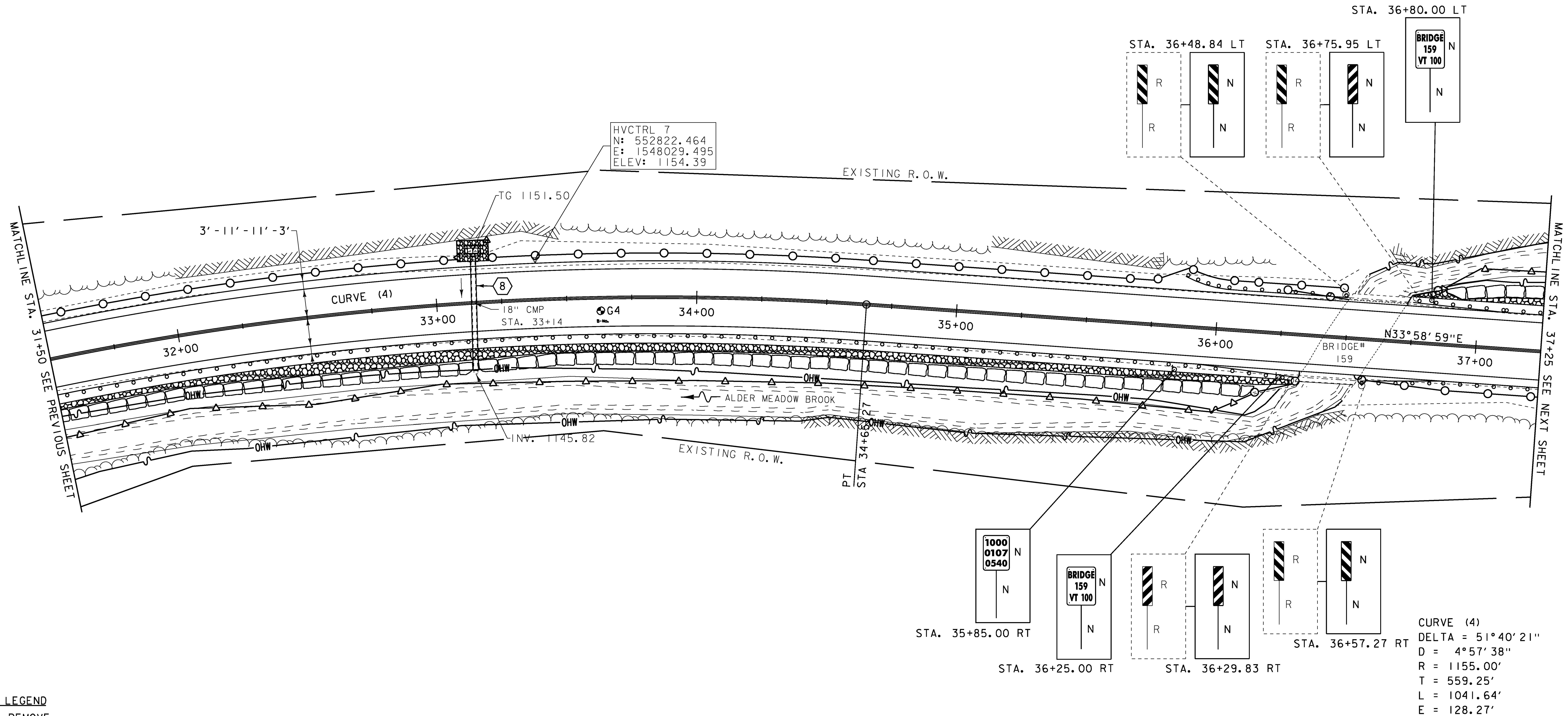
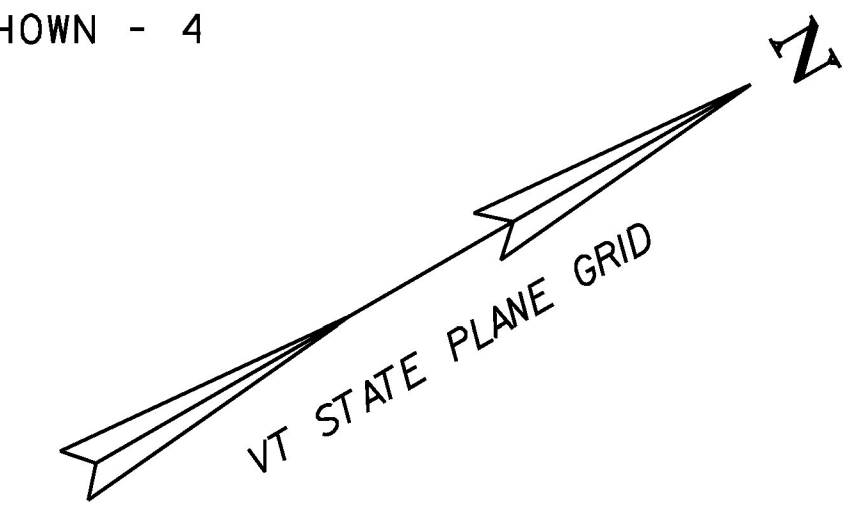
STONE FILL, TYPE II
 STA. 31+50.00 - STA. 36+29.00 RT
 STA. 36+75.00 - STA. 37+25.00 LT

RIPRAP, HEAVY TYPE
 STA. 31+50.00 - STA. 36+15.00 RT
 STA. 36+88.00 - STA. 37+25.00 LT

GRUBBING MATERIAL (12")
 STA. 31+50.00 - STA. 36+29.00 RT
 STA. 36+88.00 - STA. 37+25.00 LT

GEOTEXTILE UNDER STONE FILL
 STA. 33+09.02 - STA. 33+20.85 LT

REMOVING SIGNS
 AS SHOWN - 4

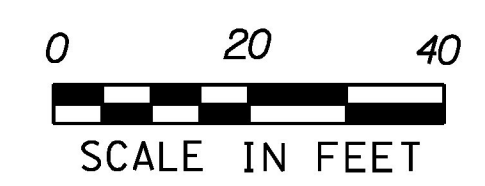


HVCTRL 7
 N: 552822.464
 E: 1548029.495
 ELEV: 1154.39

N33°58'59"E

CURVE (4)
 DELTA = 51°40'21"
 D = 4°57'38"
 R = 1155.00'
 T = 559.25'
 L = 1041.64'
 E = 128.27'

SIGN LEGEND
 R = REMOVE
 R&S = REMOVE AND SALVAGE
 RET = RETAIN
 S = SALVAGED
 N = NEW
 B-B = BACK TO BACK
 --- = EXISTING
 — = NEW



PROJECT NAME: GRANVILLE
 PROJECT NUMBER: ER STP 013-4 (40)
 z12b520bdr.dgn
 PROJECT LEADER: J. TUCKER
 DESIGNED BY: B. BRESLEND
 PROJECT LAYOUT SHEET 7
 PLOT DATE: 7/8/2015
 DRAWN BY: B. BRESLEND
 CHECKED BY: J. TUCKER
 SHEET 31 OF 141