

3 STA. 19+14.28 LT 19.4' REMOVE EXISTING DI  
 STA. 19+14.28 LT 20.0' INSTALL 4' X6' PRECAST  
 DROP INLET WITH TWO CAST IRON GRATES (TYPE E)  
 RIM = 1117.30'  
 REPLACE EXISTING 24" CMP WITH  
 NEW 24" CPEP (SL) FROM NEW DI TO  
 STA. 19+14.12 RT 24.0'  
 LENGTH = 42'-0"  
 PROPOSED INV. @ DI = 1113.80'  
 PROPOSED INV. OUT = 1112.35'

4 STA. 19+79.08 LT 18.9' REMOVE EXISTING DI  
 STA. 19+79.08 LT 20.0' INSTALL 4' X6' PRECAST  
 DROP INLET WITH TWO CAST IRON GRATES (TYPE E)  
 RIM = 1118.70'  
 REPLACE EXISTING 24" CMP WITH  
 NEW 24" CPEP (SL) FROM NEW DI TO  
 STA. 19+78.95 RT 25.0'  
 LENGTH = 43'-0"  
 PROPOSED INV. @ DI = 1115.20'  
 PROPOSED INV. OUT = 1113.94'

TEMPORARY 4 INCH WHITE LINE, PAINT  
 STA. 14+50.00 - STA. 20+25.00 (SOLID LT & RT)

TEMPORARY 4 INCH YELLOW LINE, PAINT  
 STA. 14+50.00 - STA. 20+25.00 (SOLID LT & RT)

DURABLE 4 INCH WHITE LINE (SEE OPTION ITEMS)  
 STA. 14+50.00 - STA. 20+25.00 (SOLID LT & RT)

DURABLE 4 INCH YELLOW LINE (SEE OPTION ITEMS)  
 STA. 14+50.00 - STA. 20+25.00 (SOLID LT & RT)

REMOVING SIGNS  
 AS SHOWN - 2

STONE FILL, TYPE I  
 STA. 19+09.00 - STA. 19+20.00 LT  
 STA. 19+73.00 - STA. 19+85.00 RT

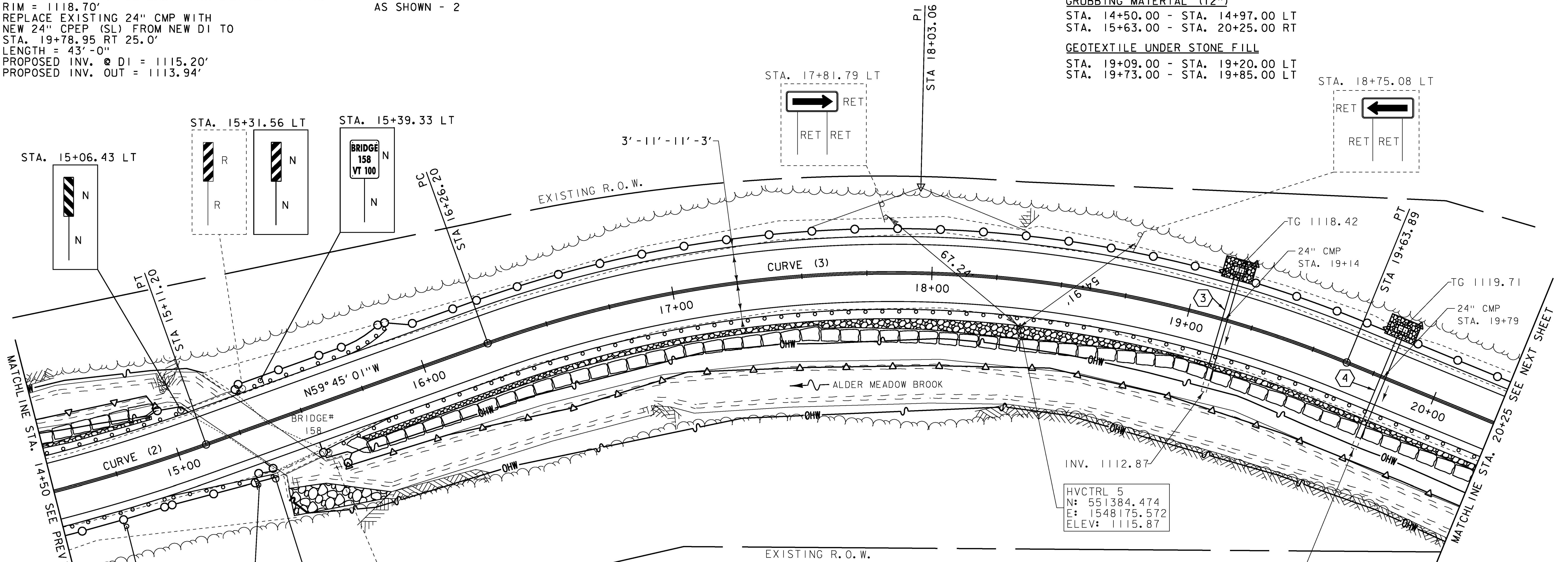
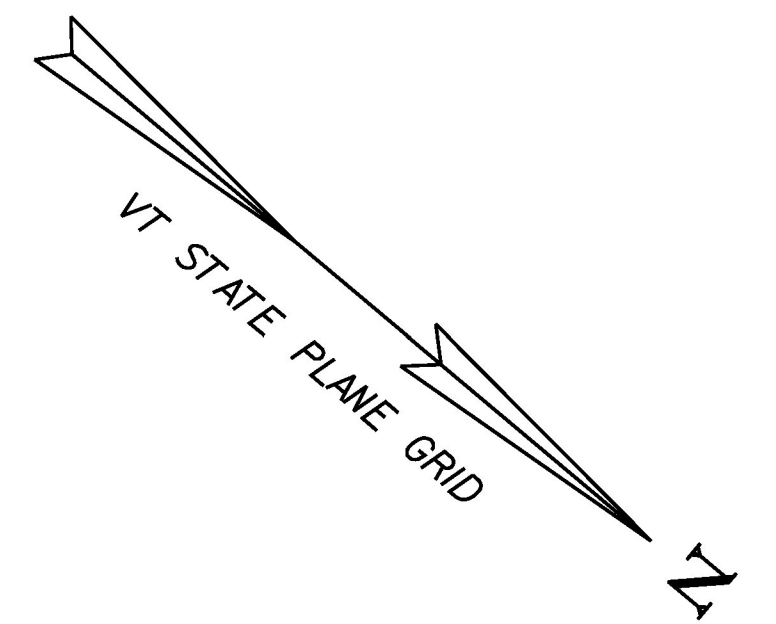
STONE FILL, TYPE II  
 STA. 14+50.00 - STA. 14+97.00 LT  
 STA. 15+63.00 - STA. 20+25.00 RT

STONE FILL, TYPE IV  
 STA. 15+34.00 - STA. 15+72.00 RT

RIPRAP, HEAVY TYPE  
 STA. 14+50.00 - STA. 14+97.00 LT  
 STA. 15+63.00 - STA. 20+25.00 RT

GRUBBING MATERIAL (12")  
 STA. 14+50.00 - STA. 14+97.00 LT  
 STA. 15+63.00 - STA. 20+25.00 RT

GEOTEXTILE UNDER STONE FILL  
 STA. 19+09.00 - STA. 19+20.00 LT  
 STA. 19+73.00 - STA. 19+85.00 RT



REMOVAL AND DISPOSAL OF GUARDRAIL  
 STA. 14+50.00 - STA. 15+06.75 LT  
 STA. 14+50.00 - STA. 15+32.00 RT  
 STA. 15+29.00 - STA. 15+80.00 LT  
 STA. 15+55.00 - STA. 16+05.00 RT

STEEL BEAM GUARDRAIL, GALVANIZED  
 STA. 14+50.00 - STA. 14+81.75 LT  
 STA. 14+50.00 - STA. 15+07.00 RT  
 STA. 15+80.00 - STA. 20+25.00 RT

HD STEEL BEAM GUARDRAIL, GALVANIZED  
 STA. 14+81.75 - STA. 15+06.75 LT  
 STA. 15+07.00 - STA. 15+32.00 RT  
 STA. 15+29.00 - STA. 15+54.00 LT  
 STA. 15+55.00 - STA. 15+80.00 RT

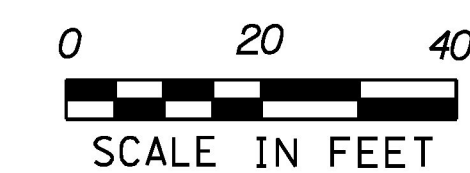
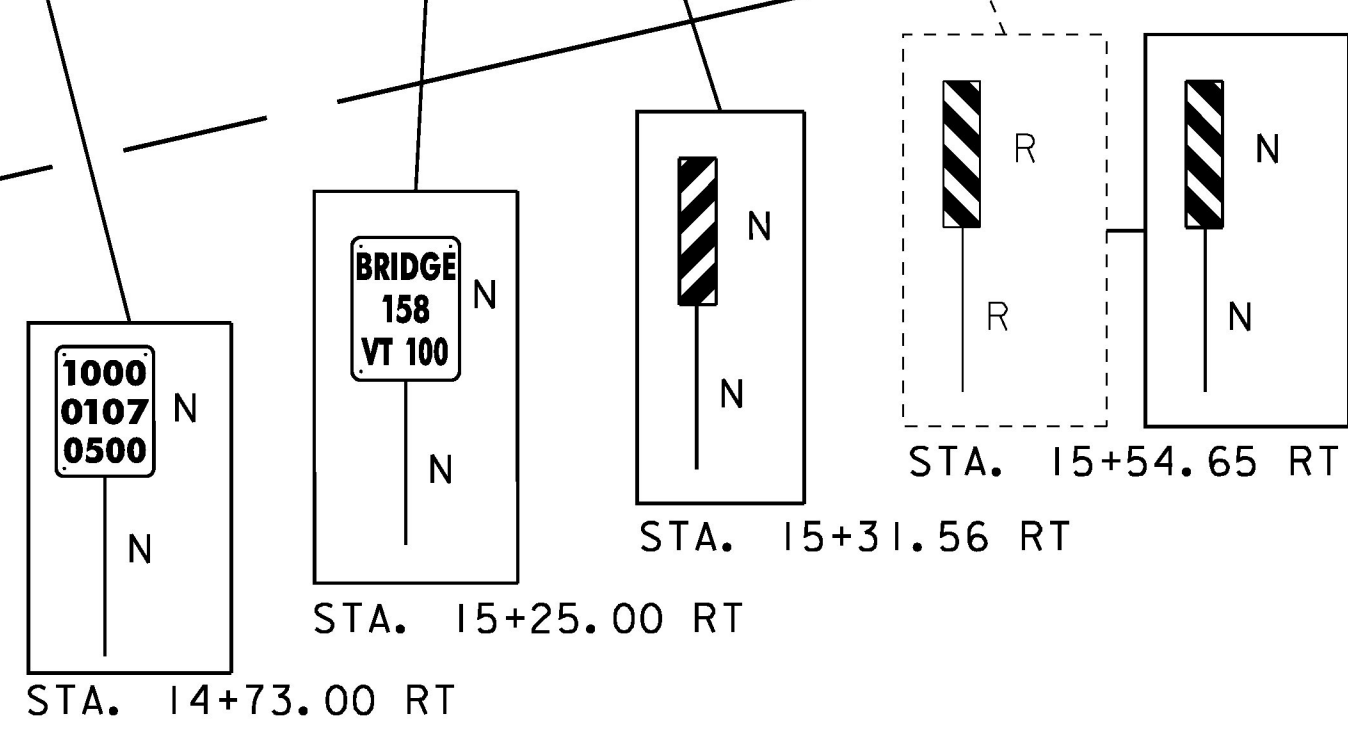
MANUFACTURED TERMINAL SECTION, FLARED  
 STA. 15+54.00 - STA. 15+91.50 LT

INV. 1114.26'

CURVE (3)  
 DELTA = 42°03'39"  
 D = 12°27'20"  
 R = 460.00'  
 T = 176.86'  
 L = 337.69'  
 E = 32.83'

**SIGN LEGEND**

- R = REMOVE
- R&S = REMOVE AND SALVAGE
- RET = RETAIN
- S = SALVAGED
- N = NEW
- B-B = BACK TO BACK
- = EXISTING
- = NEW



PROJECT NAME: GRANVILLE  
 PROJECT NUMBER: ER STP 013-4 (40)

z12b520bdr.dgn  
 PROJECT LEADER: J. TUCKER  
 DESIGNED BY: B. BRESLEND  
 PROJECT LAYOUT SHEET 4

PLOT DATE: 7/8/2015  
 DRAWN BY: B. BRESLEND  
 CHECKED BY: J. TUCKER  
 SHEET 28 OF 141