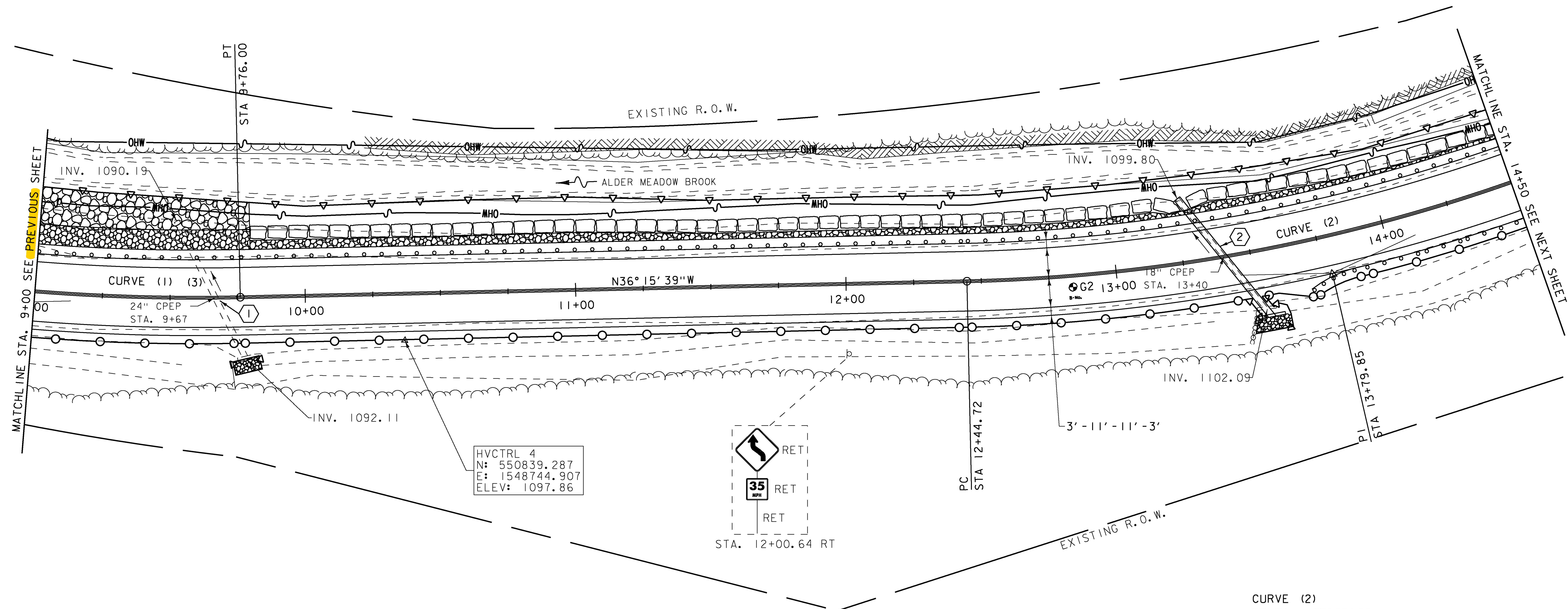
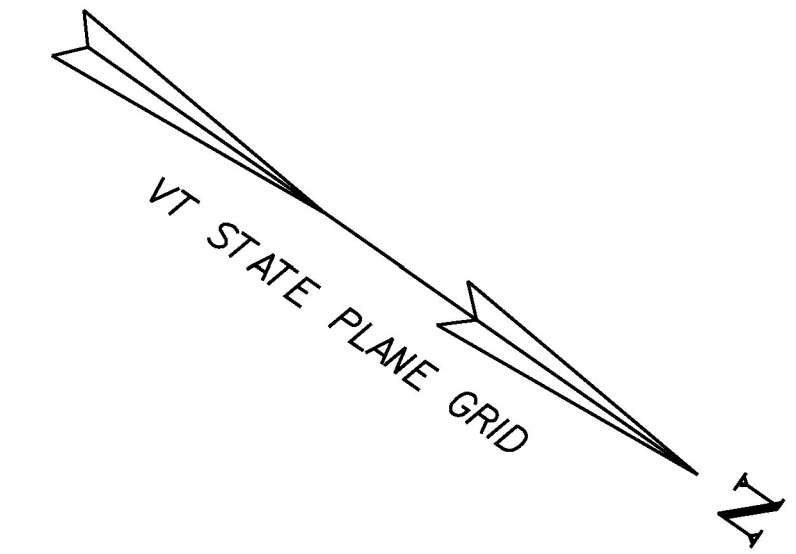


- ① RETAIN EXISTING 24" CPEP (SL)  
CLEAN AND FLUSH PIPE
- ② STA. 13+26.27 LT 23.8' TO  
STA. 13+53.65 RT 25.1'  
REMOVE EXISTING HEADWALL  
REPLACE EXISTING 18" CPEP  
WITH 30" CPEP (SL)  
LENGTH = 56'-0"  
CONSTRUCT NEW HEADWALL PER STD. D-33  
PROPOSED INV. IN = 1101.51  
PROPOSED INV. OUT = 1099.83

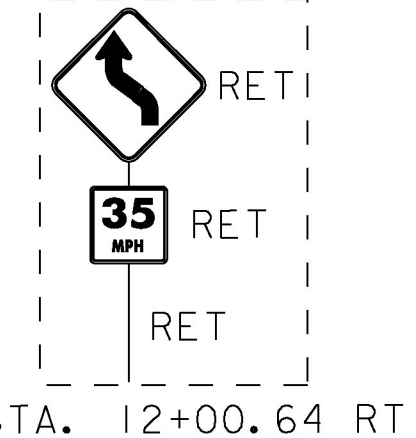
- TEMPORARY 4 INCH WHITE LINE, PAINT  
STA. 9+00.00 - STA. 14+50.00 (SOLID LT & RT)
- TEMPORARY 4 INCH YELLOW LINE, PAINT  
STA. 9+00.00 - STA. 14+50.00 (SOLID LT & RT)
- DURABLE 4 INCH WHITE LINE (SEE OPTION ITEMS)  
STA. 9+00.00 - STA. 14+50.00 (SOLID LT & RT)
- DURABLE 4 INCH YELLOW LINE (SEE OPTION ITEMS)  
STA. 9+00.00 - STA. 14+50.00 (SOLID LT & RT)

- REMOVAL AND DISPOSAL OF GUARDRAIL  
STA. 13+73.00 - STA. 14+50.00 RT  
STA. 13+92.00 - STA. 14+50.00 LT
- STEEL BEAM GUARDRAIL, GALVANIZED  
STA. 9+00.00 - STA. 14+50.00 LT  
STA. 14+07.00 - STA. 14+50.00 RT
- MANUFACTURED TERMINAL SECTION, FLARED  
STA. 13+69.50 - STA. 14+07.00 RT

- STONE FILL, TYPE I  
STA. 9+73.00 - STA. 9+84.00 RT  
STA. 13+48.00 - STA. 13+62.00 RT
- STONE FILL, TYPE II  
STA. 9+00.00 - STA. 9+80.00 LT  
STA. 9+80.00 - STA. 14+50.00 LT
- STONE FILL, TYPE IV  
STA. 9+00.00 - STA. 9+80.00 LT
- RIPRAP, HEAVY TYPE  
STA. 9+80.00 - STA. 14+50.00 LT
- GRUBBING MATERIAL (12")  
STA. 9+00.00 - STA. 14+50.00 LT



HVCTRL 4  
N: 550839.287  
E: 1548744.907  
ELEV: 1097.86



CURVE (1)  
DELTA = 47°55'25"  
D = 4°58'56" (1) D = 11°27'33" (2) D = 7°38'22" (3)  
R = 1150.00' (1) R = 500.00' (2) R = 750.00' (3)  
T = 316.01' (1) T = 287.53' (2)  
L = 155.29' (1) L = 218.89' (2) L = 197.70' (3)  
E = 42.63'

CURVE (2)  
DELTA = 23°29'22"  
D = 8°48'53"  
R = 650.00'  
T = 135.14'  
L = 266.48'  
E = 13.90'

- SIGN LEGEND**
- R = REMOVE
  - R&S = REMOVE AND SALVAGE
  - RET = RETAIN
  - S = SALVAGED
  - N = NEW
  - B-B = BACK TO BACK
  - - = EXISTING
  - = NEW



PROJECT NAME: GRANVILLE	
PROJECT NUMBER: ER STP 013-4 (40)	
z12b520bdr.dgn	PLOT DATE: 7/8/2015
PROJECT LEADER: J. TUCKER	DRAWN BY: B. BRESLEND
DESIGNED BY: B. BRESLEND	CHECKED BY: J. TUCKER
PROJECT LAYOUT SHEET 3	SHEET 27 OF 141