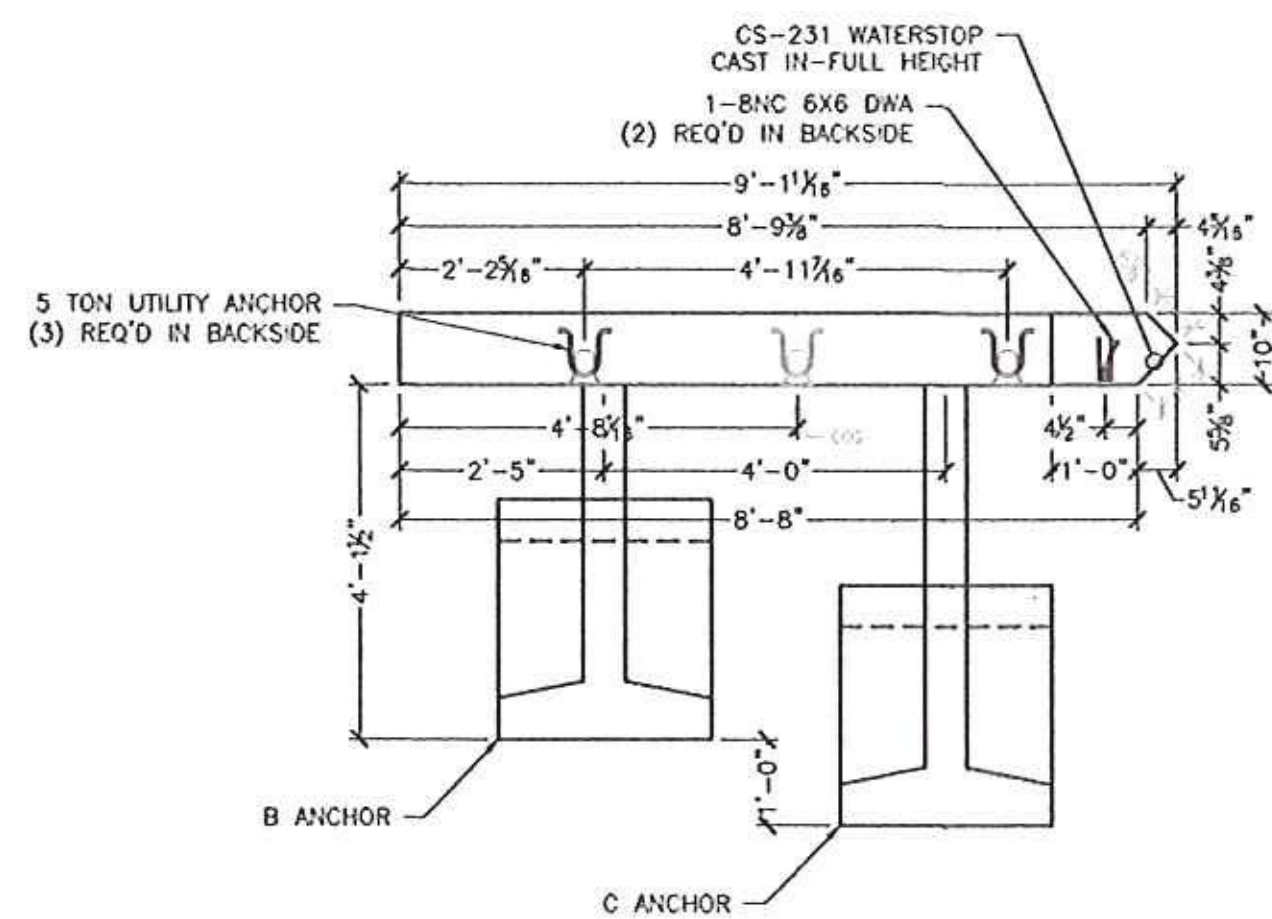
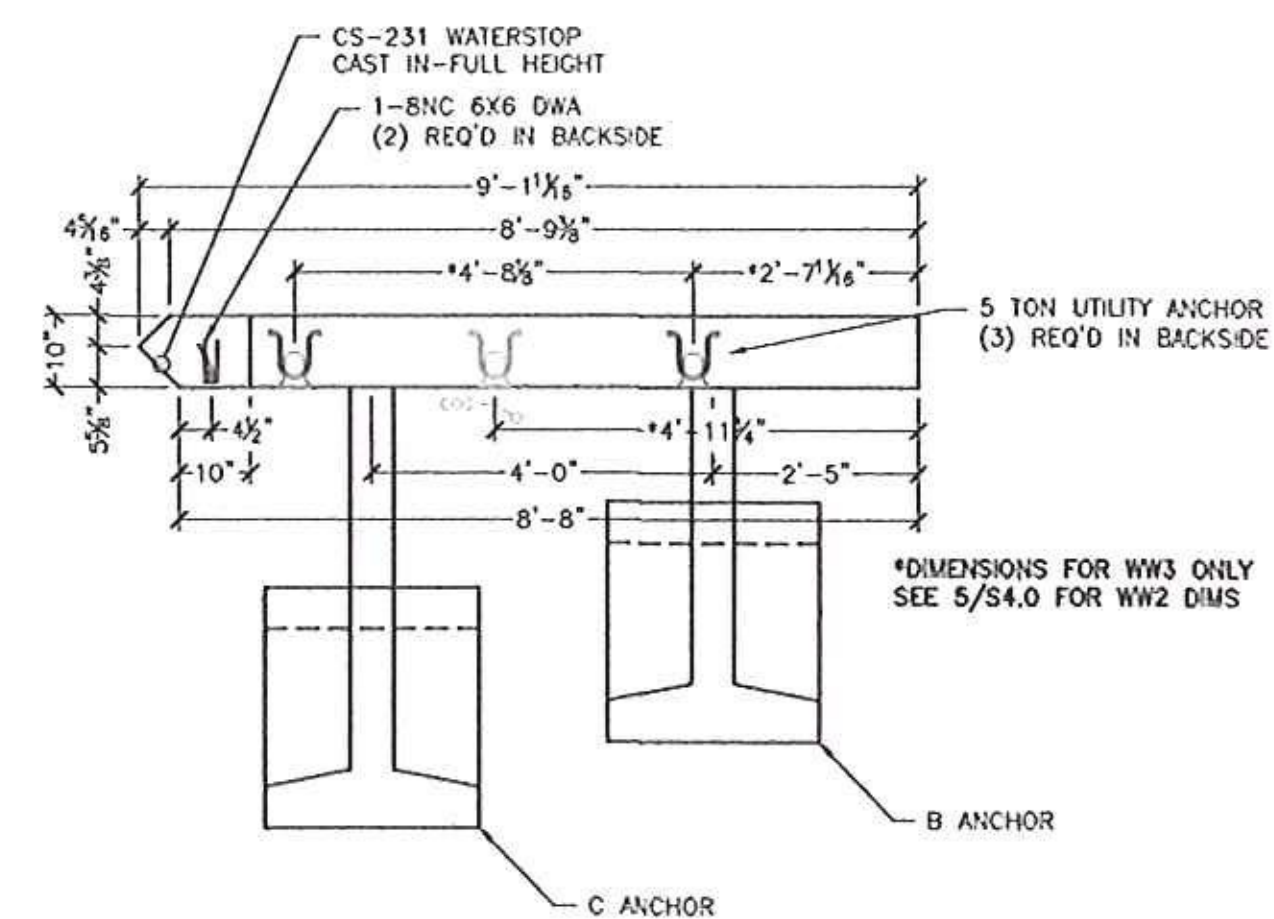


1 WW1 PLAN VIEW
S4.0 1/2" = 1'-0"

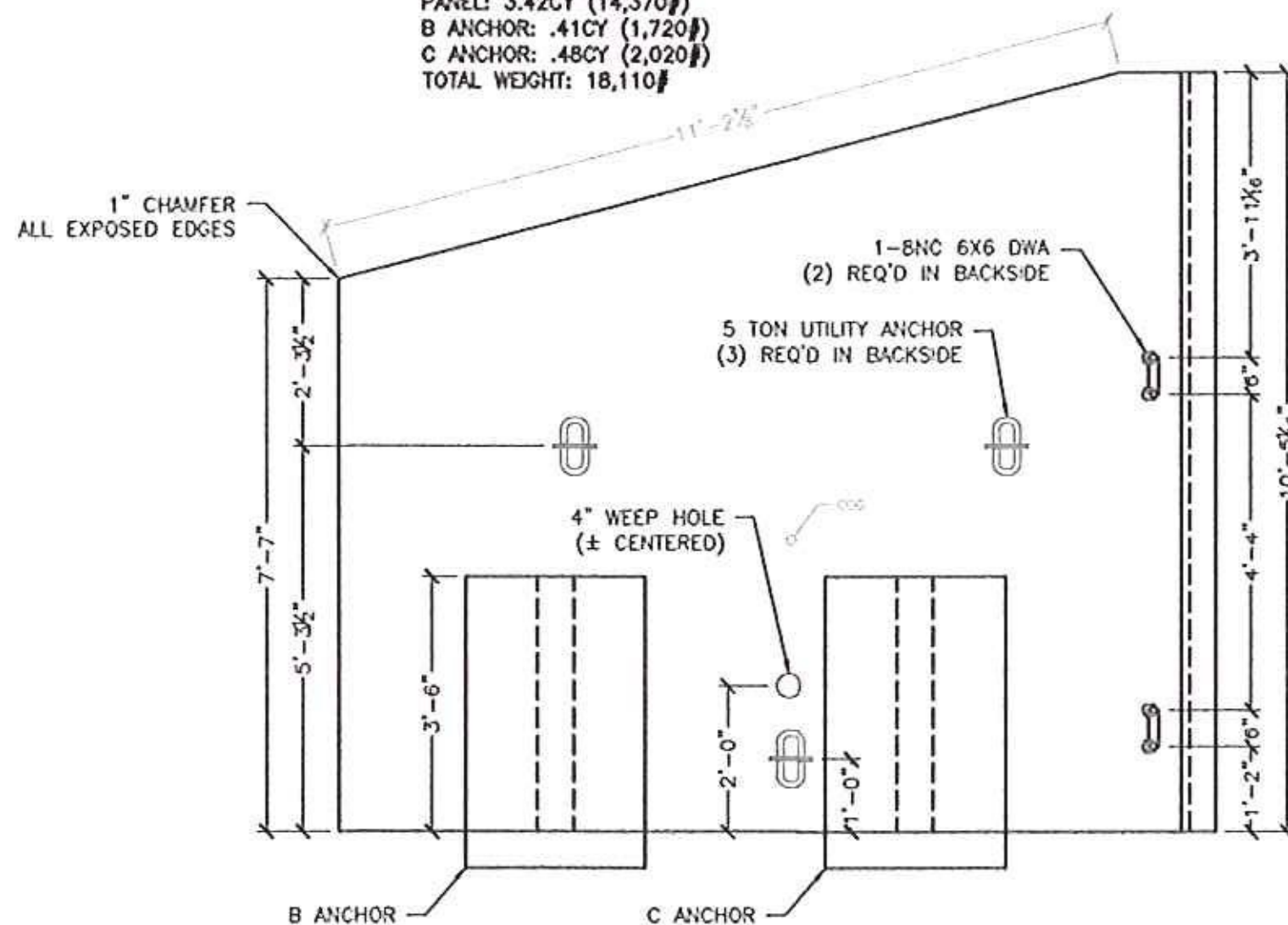


8 WW4 PLAN VIEW
S4.0 1/2" = 1'-0"



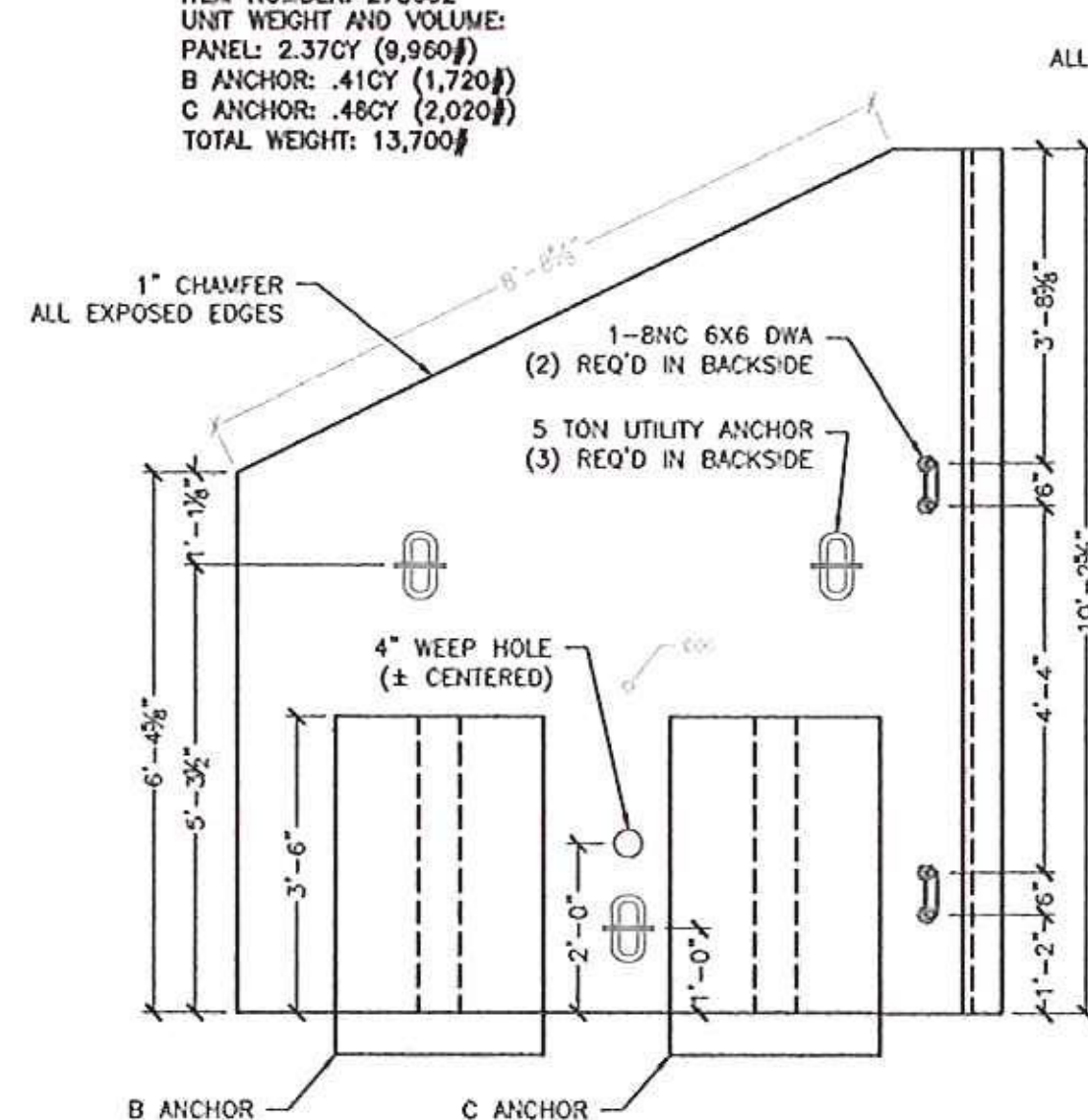
4 WW2/WW3 PLAN VIEW
S4.0 1/2" = 1'-0"

WW1 - 1 REQ'D
ITEM NUMBER: 275602
UNIT WEIGHT AND VOLUME:
PANEL: 3.42CY (9,990#)
B ANCHOR: .41CY (1,720#)
C ANCHOR: .48CY (2,020#)
TOTAL WEIGHT: 18,110#



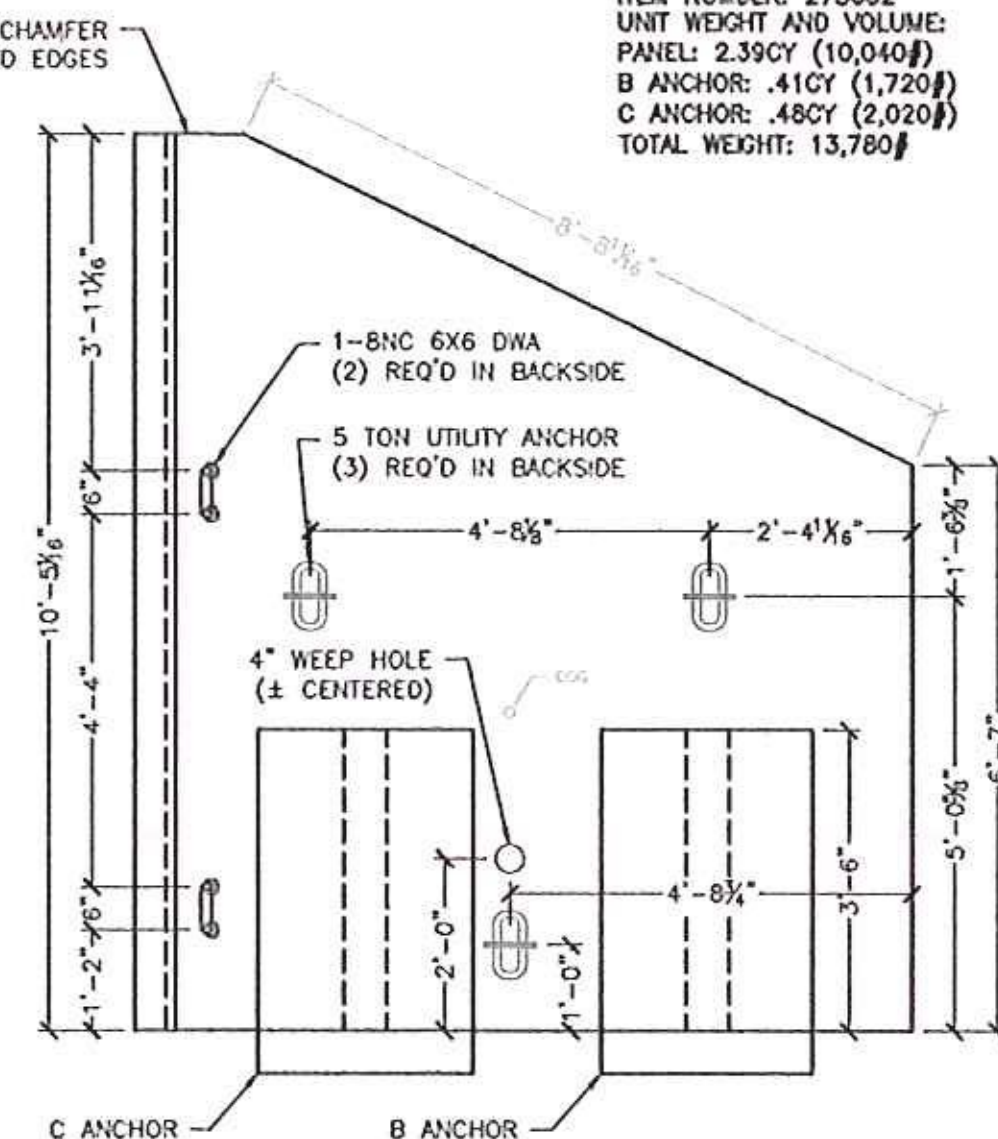
2 WW1 ELEVATION
S4.0 1/2" = 1'-0"

WW4 - 1 REQ'D
ITEM NUMBER: 275602
UNIT WEIGHT AND VOLUME:
PANEL: 2.37CY (9,990#)
B ANCHOR: .41CY (1,720#)
C ANCHOR: .48CY (2,020#)
TOTAL WEIGHT: 13,700#



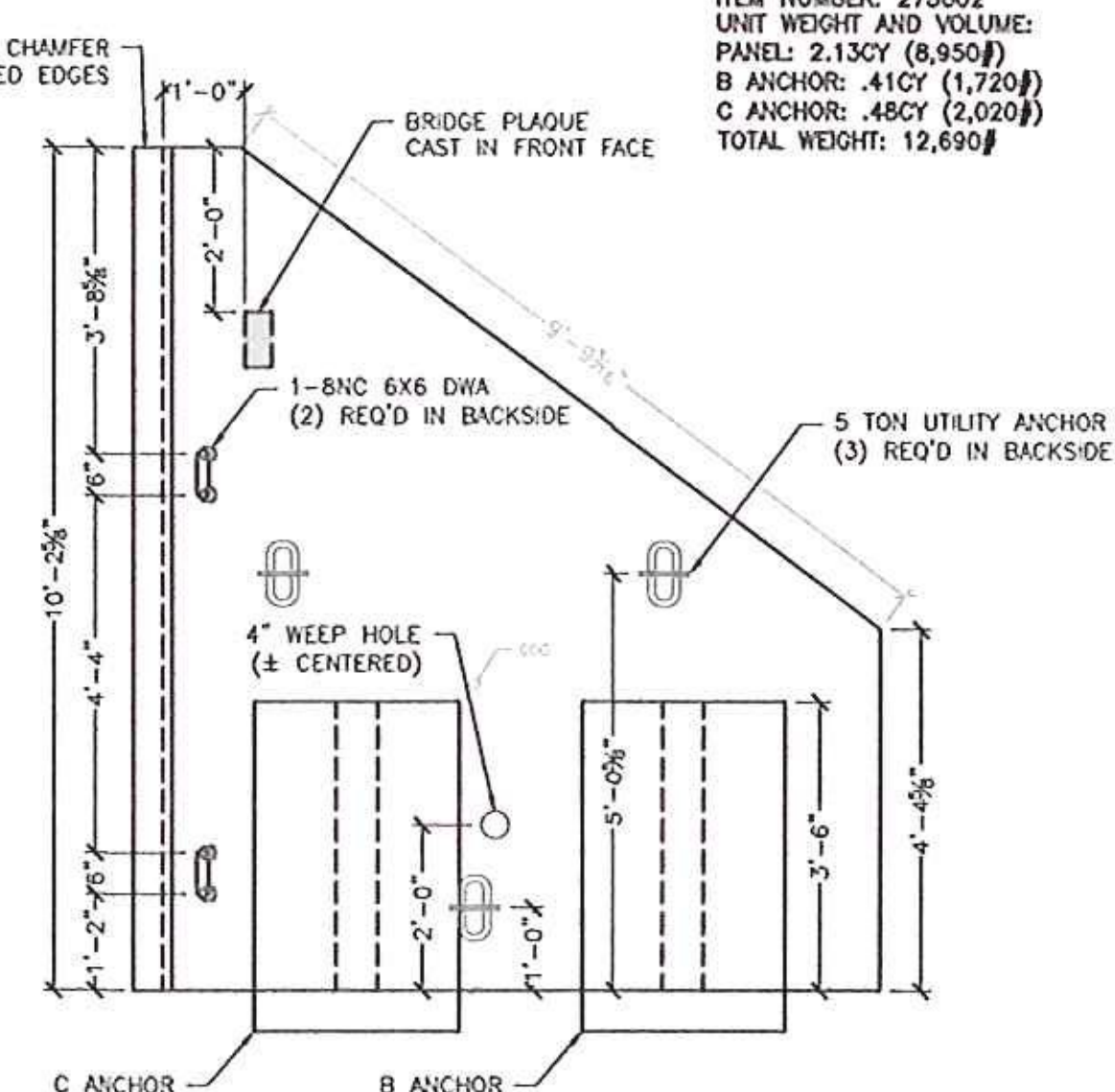
3 WW4 ELEVATION
S4.0 1/2" = 1'-0"

WW2 - 1 REQ'D
ITEM NUMBER: 275602
UNIT WEIGHT AND VOLUME:
PANEL: 2.39CY (10,040#)
B ANCHOR: .41CY (1,720#)
C ANCHOR: .48CY (2,020#)
TOTAL WEIGHT: 13,780#

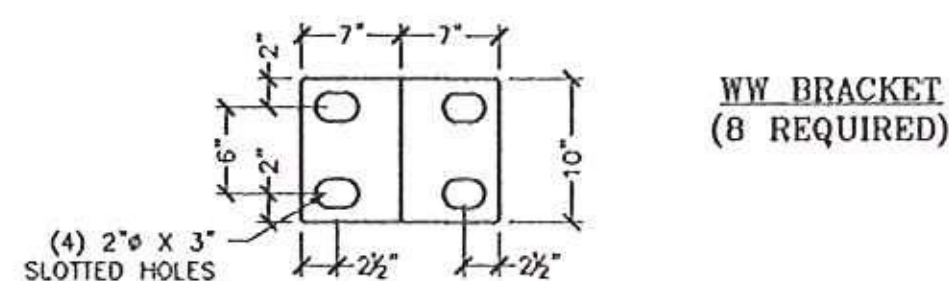
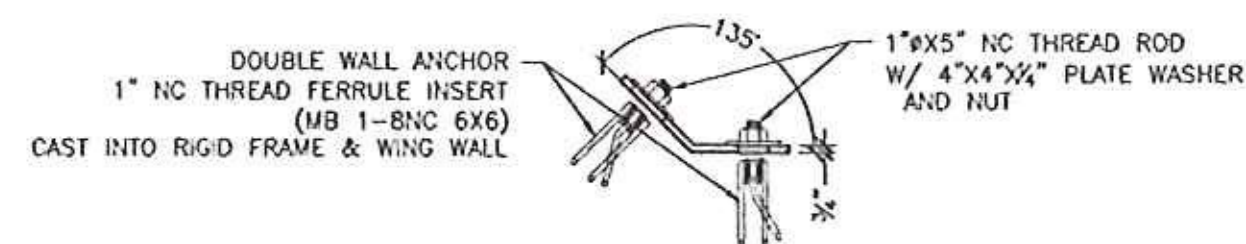


5 WW2 ELEVATION
S4.0 1/2" = 1'-0"

WW3 - 1 REQ'D
ITEM NUMBER: 275602
UNIT WEIGHT AND VOLUME:
PANEL: 2.13CY (8,950#)
B ANCHOR: .41CY (1,720#)
C ANCHOR: .48CY (2,020#)
TOTAL WEIGHT: 12,690#



6 WW3 ELEVATION
S4.0 1/2" = 1'-0"



PLATES TO BE MADE OF 3/4" MILD STEEL, PLASMA CUT, AND BENT AS REQUIRED. (HOT DIPPED GALVANIZED AFTER BENDING)

7 WINGWALL BRACKET DETAIL
S4.0 1" = 1'-0"

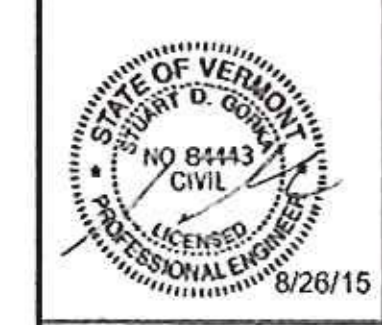
NO EXCEPTIONS TAKEN DISAPPROVED
 Revised and Resubmit Approved as Noted

DESIGN IS ONLY FOR GENERAL CONFORMANCE WITH THE BASIC CONCEPT OF THE PROJECT AND GENERAL CONFORMANCE WITH THE DESCRIPTION GIVEN IN THE CONTRACT DOCUMENTS. AN APPROVAL SIGNATURE IS SUBJECT TO THE REQUIREMENTS OF THE PLANS AND SPECIFICATIONS. CONTRACTOR IS RESPONSIBLE FOR DETERMINING WHETHER SHALL BE COMPLETED AND COMPLETED BY THE JOB SITE. RESUBMITTING PROPOSALS AND TENDERS OF CONSTRUCTION, CONSTRUCTION OF HIS WORK WITH THAT OF ALL OTHER TRADES, AND THE SATISFACTORY PERFORMANCE OF THE WORK.

GREEN INTERNATIONAL AFFILIATES, INC.

CHECKED BY: YW DATE: 8/31/15
 SIGNED BY: BK DATE: 8/31/15

| Rev | Date | Revised For | By |
|-----|---------|--------------|-----|
| 1 | 8/22/15 | FOR COMMENTS | PTL |
| 2 | | | |
| 3 | | | |
| 4 | | | |



ACE
 170 BUXTON INDUSTRIAL DRIVE - PO BOX 870
 JAMAICA, VT 05343
 PHONE: 802-227-8228
 FAX: 802-227-8228
 WWW.ACECORP.COM

VAOT #ER STP 013-2(12) - VT Route 100 Bridge #82
 Jamaica, VT
 10'x7' Box Culvert - Wingwall Details
 Project No. 6200
 Date: 7/23/15
 Scale: AS SHOWN
 Checked By: PTL
 Drawn By: CTP

Prepared for:
 Casella Construction
 8 US4 East
 Mendon VT 05701

DWG NO.
 S4.0

SPECIALTY ENGINEERING SERVICES PROVIDED BY:
 CONCRETE ENGINEERING SOLUTIONS, LLC
 225 RIVER STREET
 FAYETTEVILLE, VT 05404
 TEL: 802-253-2222