

GEOTEXTILE FOR SILT FENCE

10+38 LT - 11+19 LT
11+32 LT - 11+91 LT
10+38 RT - 11+58 RT
11+75 RT - 12+07 RT
13+95 RT - 14+49 RT

SEED

11+00 LT - 13+84 LT
11+00 RT - 14+40 RT

SEED, WINTER RYE

11+00 LT - 13+84 LT
11+00 RT - 14+40 LT

HAY MULCH

11+00 LT - 13+84 LT
11+00 RT - 14+40 RT

TOP SOIL

11+00 LT - 13+84 LT
11+00 RT - 14+40 LT

TEMPORARY EROSION MATTING

12+00 LT - 13+65 LT
STONE FILL
SEE PLAN SHEET FOR
ADDITIONAL INFORMATION

TEMPORARY STONE CHECK DAM, TYPE I

6+51 LT - RT

VEHICLE TRACKING PAD

11+25
14+25

PROJECT DEMARCATION FENCE

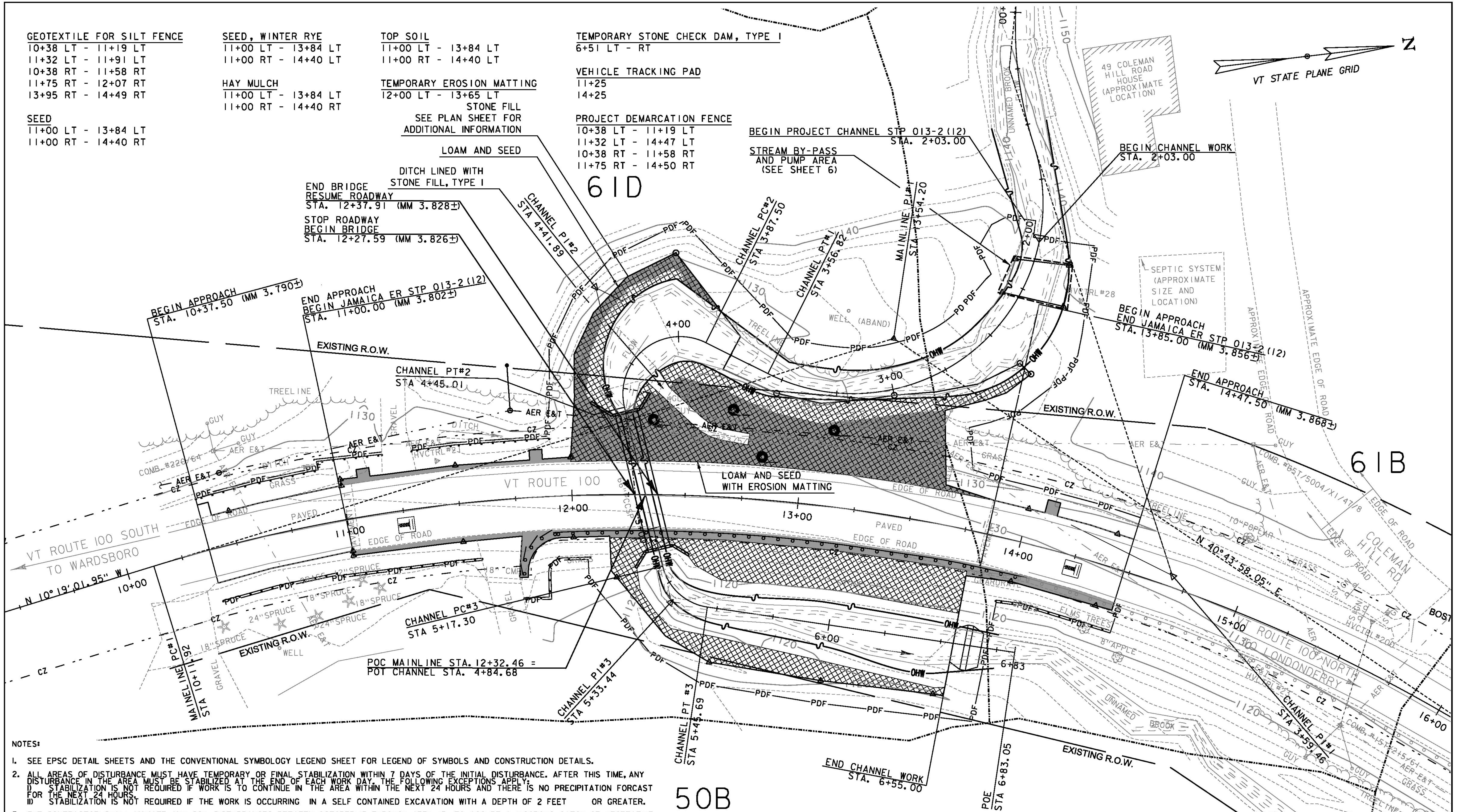
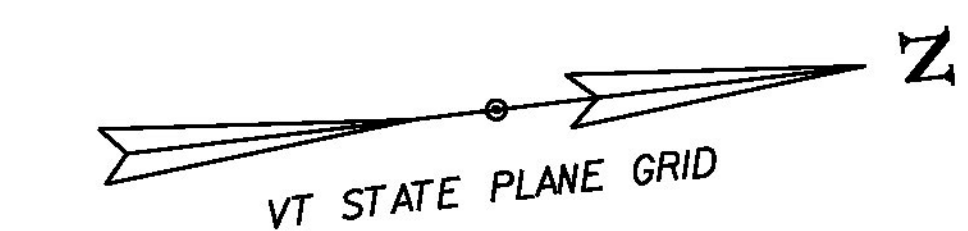
10+38 LT - 11+19 LT
11+32 LT - 14+47 LT
10+38 RT - 11+58 RT
11+75 RT - 14+50 RT

BEGIN PROJECT CHANNEL STP 013-2 (12)

STA. 2+03.00

STREAM BY-PASS AND PUMP AREA
(SEE SHEET 6)

49 COLEMAN HILL ROAD HOUSE (APPROXIMATE LOCATION)



NOTES:

- SEE EPSC DETAIL SHEETS AND THE CONVENTIONAL SYMBOLY LEGEND SHEET FOR LEGEND OF SYMBOLS AND CONSTRUCTION DETAILS.
- ALL AREAS OF DISTURBANCE MUST HAVE TEMPORARY OR FINAL STABILIZATION WITHIN 7 DAYS OF THE INITIAL DISTURBANCE. AFTER THIS TIME, ANY DISTURBANCE IN THE AREA MUST BE STABILIZED AT THE END OF EACH WORK DAY. THE FOLLOWING EXCEPTIONS APPLY:
I) STABILIZATION IS NOT REQUIRED IF WORK IS TO CONTINUE IN THE AREA WITHIN THE NEXT 24 HOURS AND THERE IS NO PRECIPITATION FORECAST FOR THE NEXT 24 HOURS.
II) STABILIZATION IS NOT REQUIRED IF THE WORK IS OCCURRING IN A SELF CONTAINED EXCAVATION WITH A DEPTH OF 2 FEET OR GREATER.
- THE CONTRACTOR SHALL MINIMIZE ANY SOIL DISTURBANCES BETWEEN OCTOBER 15 THROUGH APRIL 15, TO ASSURE A VIGOROUS CATCH OF VEGETATIVE COVER, SEEDING AND MULCHING SHALL BE COMPLETED BY SEPTEMBER 15 TO THE EXTENT POSSIBLE, OR AS DIRECTED BY THE ENGINEER.
- THE ON-SITE PLAN COORDINATOR SHALL INSPECT ALL EROSION AND SEDIMENT CONTROL STRUCTURES AND MEASURES AT LEAST ONCE EVERY SEVEN (7) CALENDAR DAYS AND AS SOON AS POSSIBLE BUT NOT MORE THAN 24 HOURS AFTER ANY STORM EVENT. INSPECTION FREQUENCY MAY BE REDUCED TO LESS THAN ONE (1) PER MONTH IF THE ENTIRE SITE IS STABILIZED.
- THE CONTRACTOR SHALL IMMEDIATELY ROUGHEN ALL DISTURBED SOIL SURFACES TO THE SATISFACTION OF THE ENGINEER BY THE USE OF TRACK DRIVEN BULLDOZERS, SHEEPSFOOT ROLLERS OR OTHER APPROVED METHODS.
- THE CONTRACTOR SHALL APPLY DUST CONTROL MEASURES OVER EXPOSED SURFACES NOT INTENDED TO BE VEGETATED. THE CONTRACTOR SHALL INSTALL PERMANENT EROSION CONTROL MEASURES (I.E. CHECKDAMS, EROSION MATTING, STONE FILL FOR SLOPES AND DITCHES) IMMEDIATELY UPON COMPLETION OF GRADING.
- THE LOCATIONS OF THE VEHICLE TRACKING PADS ARE SUGGESTED ONLY. THE CONTRACTOR SHALL DETERMINE ACTUAL LOCATIONS OF VEHICLE TRACKING PADS NEEDED TO PERFORM THE WORK.
- ALL SEDIMENT AND EROSION PREVENTION CONTROL MEASURES SHALL BE COMPLETED AND IN PLACE BEFORE BEGINNING OF WORK.
- SEE THE EPSC NARRATIVE FOR ADDITIONAL REQUIREMENTS.

50B

IMPACT BELOW ORDINARY HIGH WATER LINE
 APPROXIMATE AREA OF IMPACT = 8,440 SF +/- (0.194 AC)
 APPROXIMATE AREA OF PERMANENT IMPACT = 4,359 SF +/- (0.100 AC)
 APPROXIMATE AREA OF TEMPORARY IMPACT = 4,081 SF +/- (0.094 AC)
 APPROXIMATE VOLUME OF STONE FILL BELOW OHW = 575 CY +/-
 APPROXIMATE VOLUME OF STONE FILL PER LINEAR FOOT = 1.42 CY/LF +/-



PROJECT NAME: JAMAICA
 PROJECT NUMBER: ER STP 013-2(12)
 FILE NAME: z12b474ecbdr.dgn
 PROJECT LEADER: E. ATKINS
 DESIGNED BY: M. BRADLEY
 EPSC CONSTRUCTION PLAN SHEET
 PLOT DATE: 02/27/2015
 DRAWN BY: M. BRADLEY
 CHECKED BY: E. ATKINS
 SHEET 22 OF 48