

SUBBASE OF DENSE GRADED CRUSHED STONE
18+31.0 RT - 22+50.0 RT

STONE FILL, TYPE 1

81+16.3 RT - 81+19.2 RT (LENGTH=17.5' X WIDTH=3')
83+70.6 RT - 83+73.4 RT (LENGTH=11' X WIDTH=3')

REMOVE AND RESET GUARDRAIL
18+00.0 RT - 19+25.0 RT

NOTE: GUARDRAIL SHALL BE REMOVED AND STOCKPILED DURING CONSTRUCTION AND USE OF ACCESS ROAD. ONCE ALL WORK IS COMPLETED THE GUARDRAIL SHALL BE RESET.

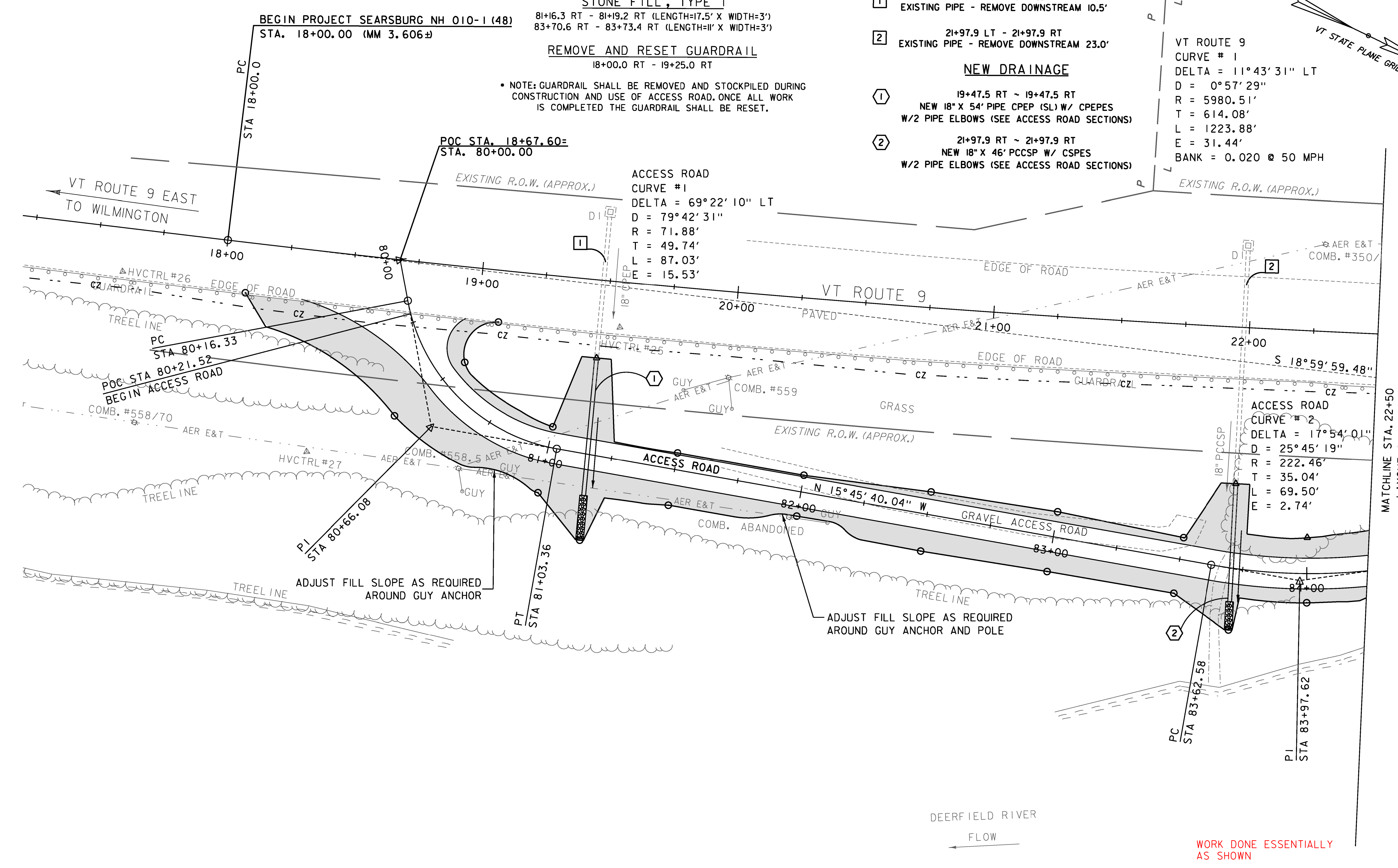
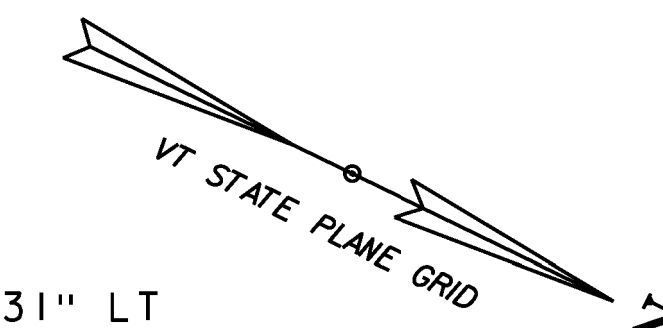
EXISTING DRAINAGE

- 1 19+47.7 LT - 19+47.5 RT
EXISTING PIPE - REMOVE DOWNSTREAM 10.5'
- 2 21+97.9 LT - 21+97.9 RT
EXISTING PIPE - REMOVE DOWNSTREAM 23.0'

NEW DRAINAGE

- 1 19+47.5 RT ~ 19+47.5 RT
NEW 18" X 54' PIPE CPEP (SL) W/ CPEPS
W/2 PIPE ELBOWS (SEE ACCESS ROAD SECTIONS)
- 2 21+97.9 RT ~ 21+97.9 RT
NEW 18" X 46' PCCSP W/ CSPES
W/2 PIPE ELBOWS (SEE ACCESS ROAD SECTIONS)

VT ROUTE 9
CURVE # 1
DELTA = 11° 43' 31" LT
D = 0° 57' 29"
R = 5980.51'
T = 614.08'
L = 1223.88'
E = 31.44'
BANK = 0.020 @ 50 MPH



ACCESS ROAD
CURVE # 1
DELTA = 69° 22' 10" LT
D = 79° 42' 31"
R = 71.88'
T = 49.74'
L = 87.03'
E = 15.53'

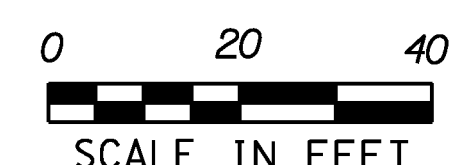
ACCESS ROAD
CURVE # 2
DELTA = 17° 54' 01"
D = 25° 45' 19"
R = 222.46'
T = 35.04'
L = 69.50'
E = 2.74'

ADJUST FILL SLOPE AS REQUIRED
AROUND GUY ANCHOR

ADJUST FILL SLOPE AS REQUIRED
AROUND GUY ANCHOR AND POLE

DEERFIELD RIVER
FLOW

WORK DONE ESSENTIALLY
AS SHOWN



GREEN INTERNATIONAL AFFILIATES, INC.
CIVIL AND STRUCTURAL ENGINEERS

PROJECT NAME: SEARSBURG	PLOT DATE: 6/16/2014
PROJECT NUMBER: NH 010-1(48)	DRAWN BY: M. BRADLEY
FILE NAME: z12B404bdr.dgn	CHECKED BY: E. ATKINS
PROJECT LEADER: E. ATKINS	SHEET 16 OF 45
DESIGNED BY: M. BRADLEY	
PLAN SHEET 1	