

SUBBASE OF DENSE GRADED CRUSHED STONE

VT ROUTE 9 23+00.0 RT - VT ROUTE 9 27+60.0 RT

AGGREGATE SHOULDERS, IN PLACE

VT ROUTE 9 23+75.0 RT - VT ROUTE 9 27+20.0 RT

STONE FILL, TYPE II

VT ROUTE 9 23+75.0 RT - VT ROUTE 9 27+00.0 RT

STONE FILL, TYPE IV

VT ROUTE 9 23+00.0 RT - VT ROUTE 9 27+60.0 RT

RELOCATE MAILBOX, SINGLE SUPPORT

VT ROUTE 9 26+43.0 X2 (MOVE TO TEMPORARY LOCATION THEN RELOCATE BACK TO PERMANENT LOCATION)

REMOVE AND RESET GUARDRAIL

VT ROUTE 9 23+75.0 RT - VT ROUTE 9 27+25.0 RT

GRUBBING MATERIAL

VT ROUTE 9 23+75.0 RT - VT ROUTE 9 27+00.0 RT

REMOVING SIGNS

VT ROUTE 9 25+22.0 RT

ERECTING SALVAGED SIGNS

VT ROUTE 9 25+22.0 RT

VT ROUTE 9
CURVE # 1
DELTA = 11°43'31" LT
D = 0°57'29"
R = 5980.51'
T = 614.08'
L = 1223.88'
E = 31.44'
BANK = 0.020 @ 50 MPH

EXISTING DRAINAGE

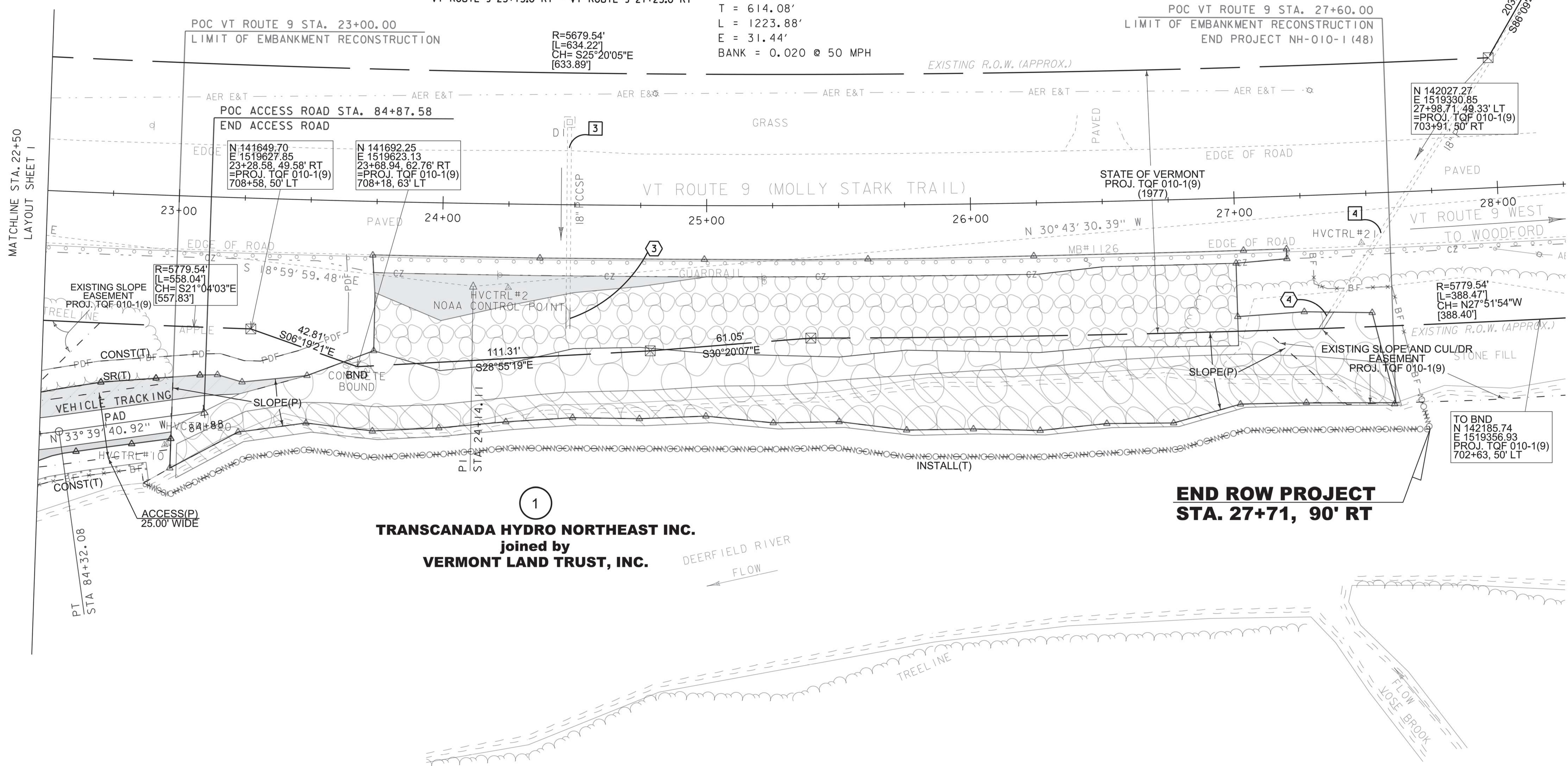
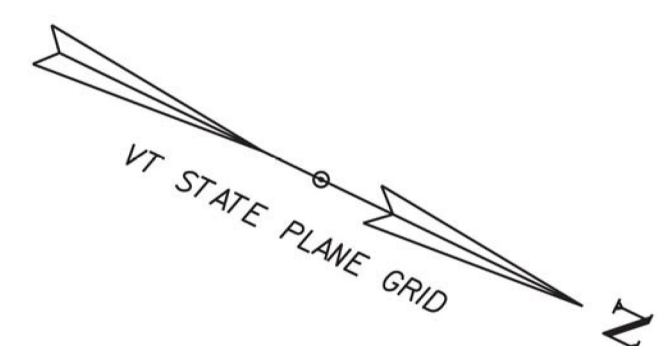
3 VT ROUTE 9 24+47.9 LT - VT ROUTE 9 24+47.9 RT
EXISTING PIPE - REPLACE 10-FEET OF PIPE

4 STA. 28+13.3 LT - STA. 27+31.1 RT
EXISTING PIPE - REPLACE 10-FEET OF PIPE

NEW DRAINAGE

3 VT ROUTE 9 24+47.9 RT ~ VT ROUTE 9 24+47.9 RT
NEW 18" X 10' PIPE PCCSP

4 VT ROUTE 9 27+35.7 RT ~ VT ROUTE 9 27+31.1 RT
NEW 18" X 10' PIPE PCCSP



LINES SHOWN ON THIS PLAN AS EXISTING PROPERTY LINES P/L ARE BELIEVED TO BE ACCURATE BUT SHOULD NOT BE RELIED UPON FOR PURPOSES UNRELATED TO THE STATE OF VERMONT'S ACQUISITION OF LAND AND RIGHTS FOR THIS PROJECT.

FOR R.O.W. USE ONLY



PROJECT NAME:	SEARSBURG	PLOT DATE:	6/16/2014
PROJECT NUMBER:	NH 010-1(48)	DRAWN BY:	E. PIERCE
FILE NAME:	z12B404rowbdr.dgn	CHECKED BY:	E. PIERCE
PROJECT LEADER:	P. LIBBY	SHEET	15 OF 45
DESIGNED BY:	GREEN INTL. AFFIL.		
R.O.W. PLAN SHEET	2		