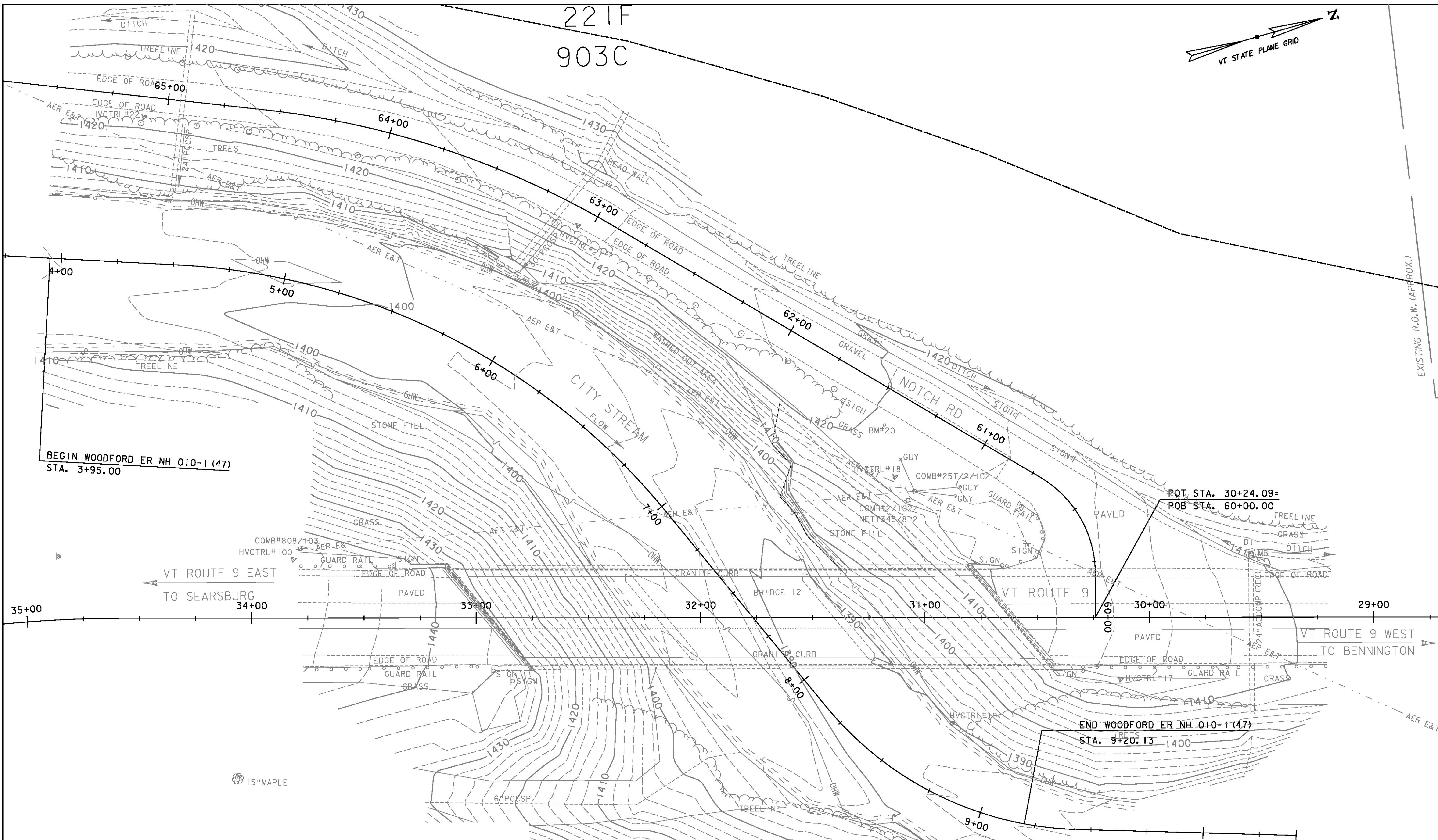
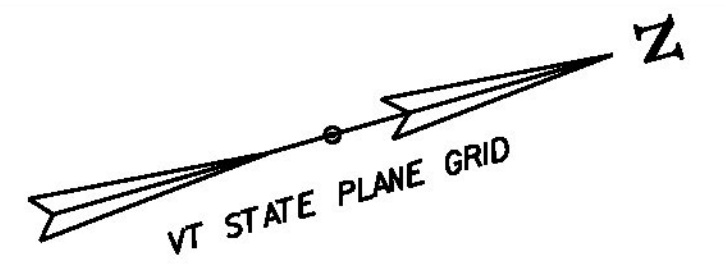


22 IF  
903C

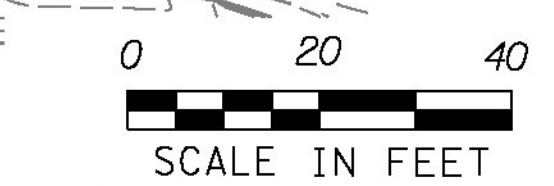


BEGIN WOODFORD ER NH 010-1(47)  
STA. 3+95.00

POT. STA. 30+24.09=  
POB STA. 60+00.00

END WOODFORD ER NH 010-1(47)  
STA. 9+20.13

SOIL DESIGNATION	HYDROLOGIC SOIL GROUP CLASSIFICATION	SOIL ERODIBILITY COEFFICIENTS (K)
903C = MUNDAL-WILMINGTON ASSOCIATION, ROLLING, VERY STONY	C	0.37
22 IF = TUNBRIDGE-BERKSHIRE ASSOCIATION, VERY STEEP, ROCKY	C	0.64



SCALE IN FEET  
GREEN INTERNATIONAL AFFILIATES, INC.  
CIVIL AND STRUCTURAL ENGINEERS

PROJECT NAME: WOODFORD  
PROJECT NUMBER: ER NH 010-1(47)  
FILE NAME: z12b402erobdr.dgn  
PROJECT LEADER: E. ATKINS  
DESIGNED BY: M. BRADLEY  
EPSC EXISTING CONDITIONS PLAN SHEET  
PLOT DATE: 12/03/2014  
DRAWN BY: M. BRADLEY  
CHECKED BY: E. ATKINS  
SHEET 18 OF 35