

GPS CONTROL POINTS

BENNINGTON CORS ARP

PID DK8255
 N = 140182.50
 E = 1452827.16
 ELLIP HEIGHT = 603.33

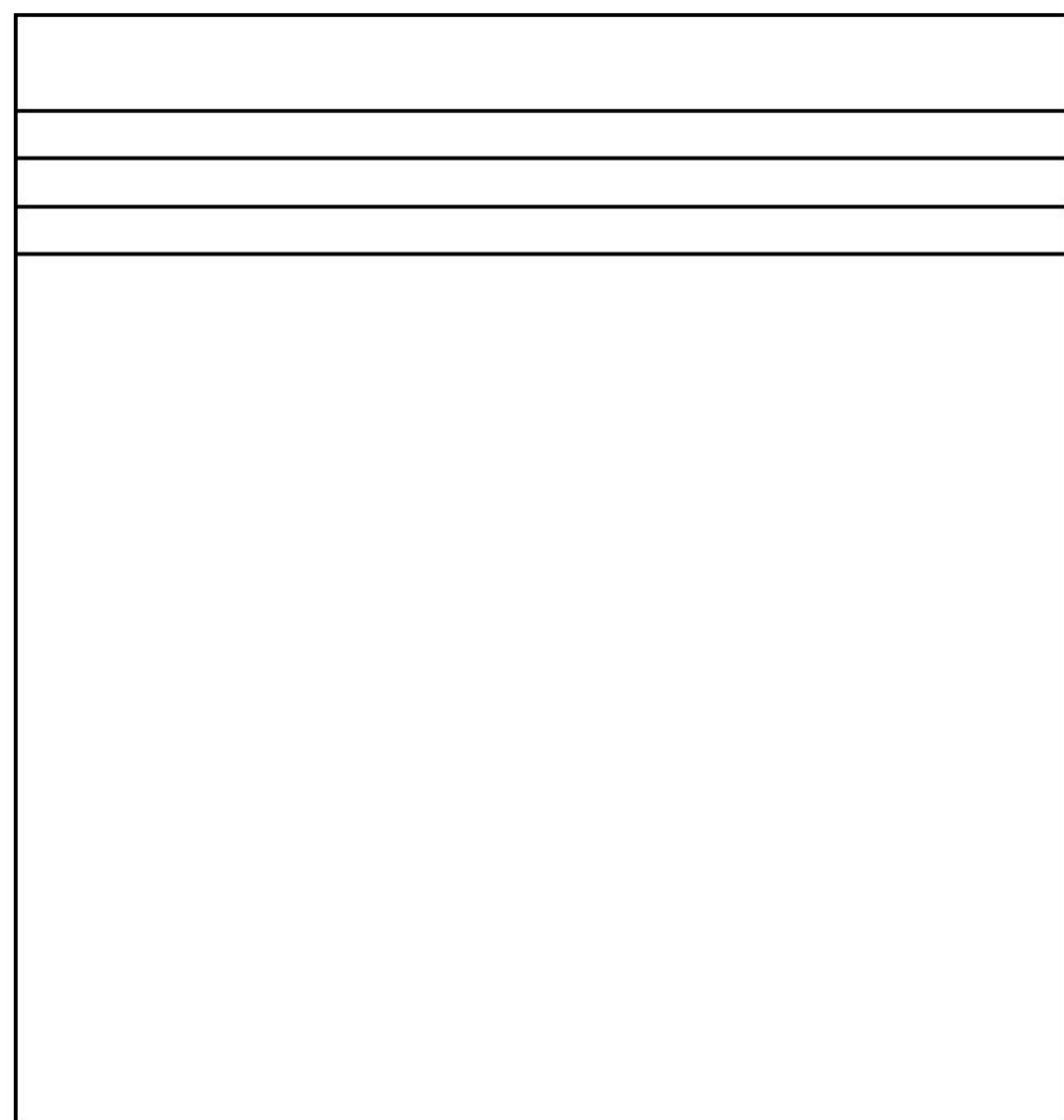
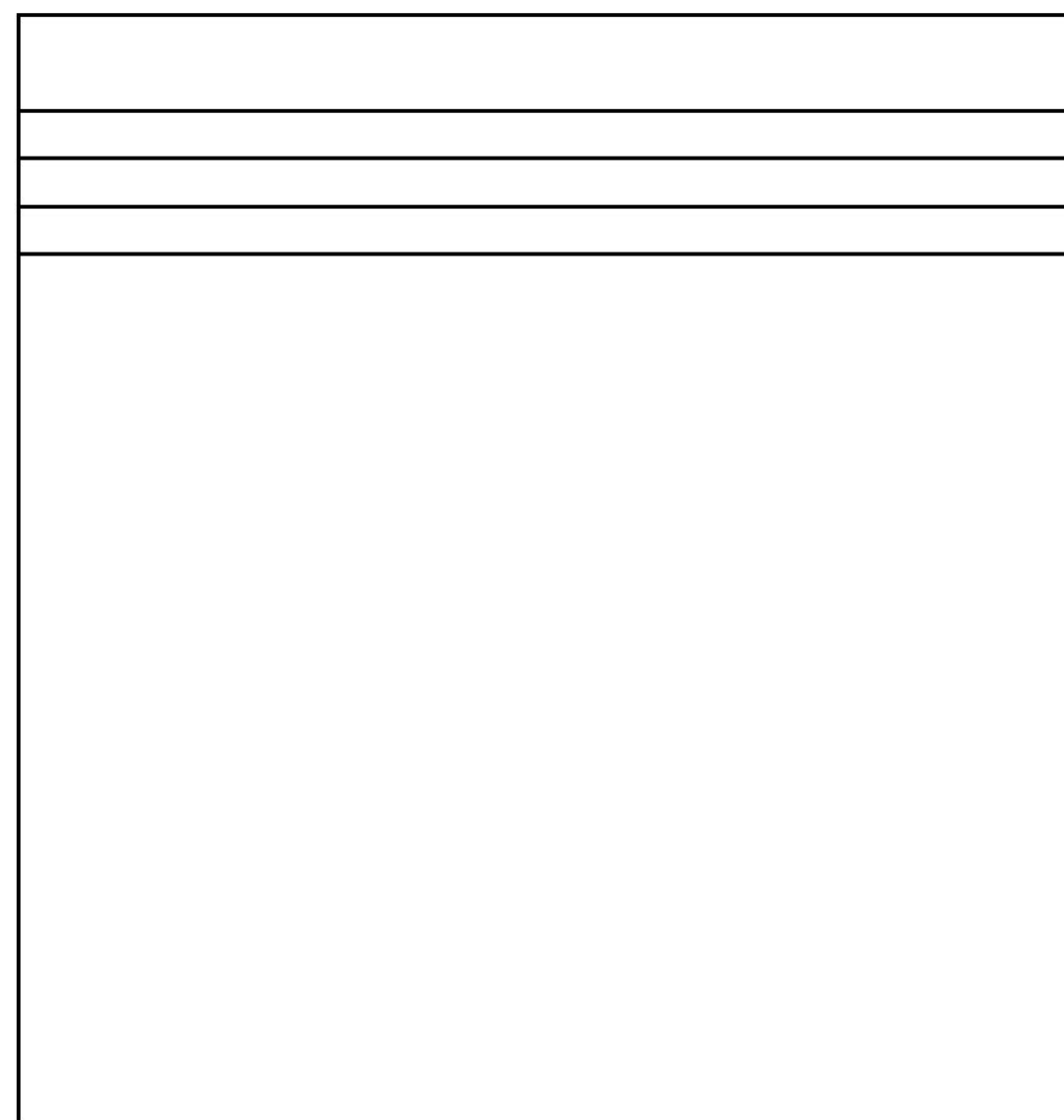
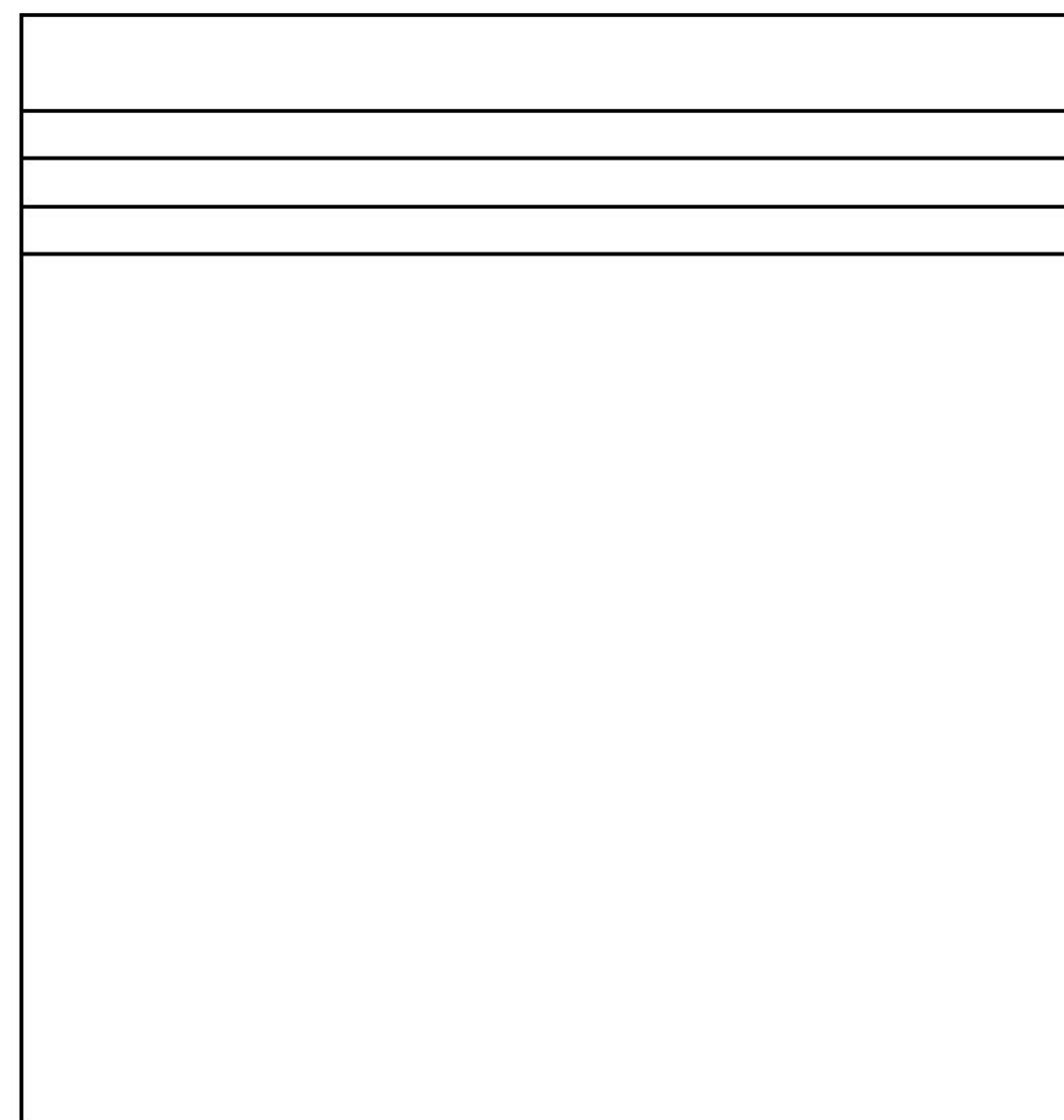
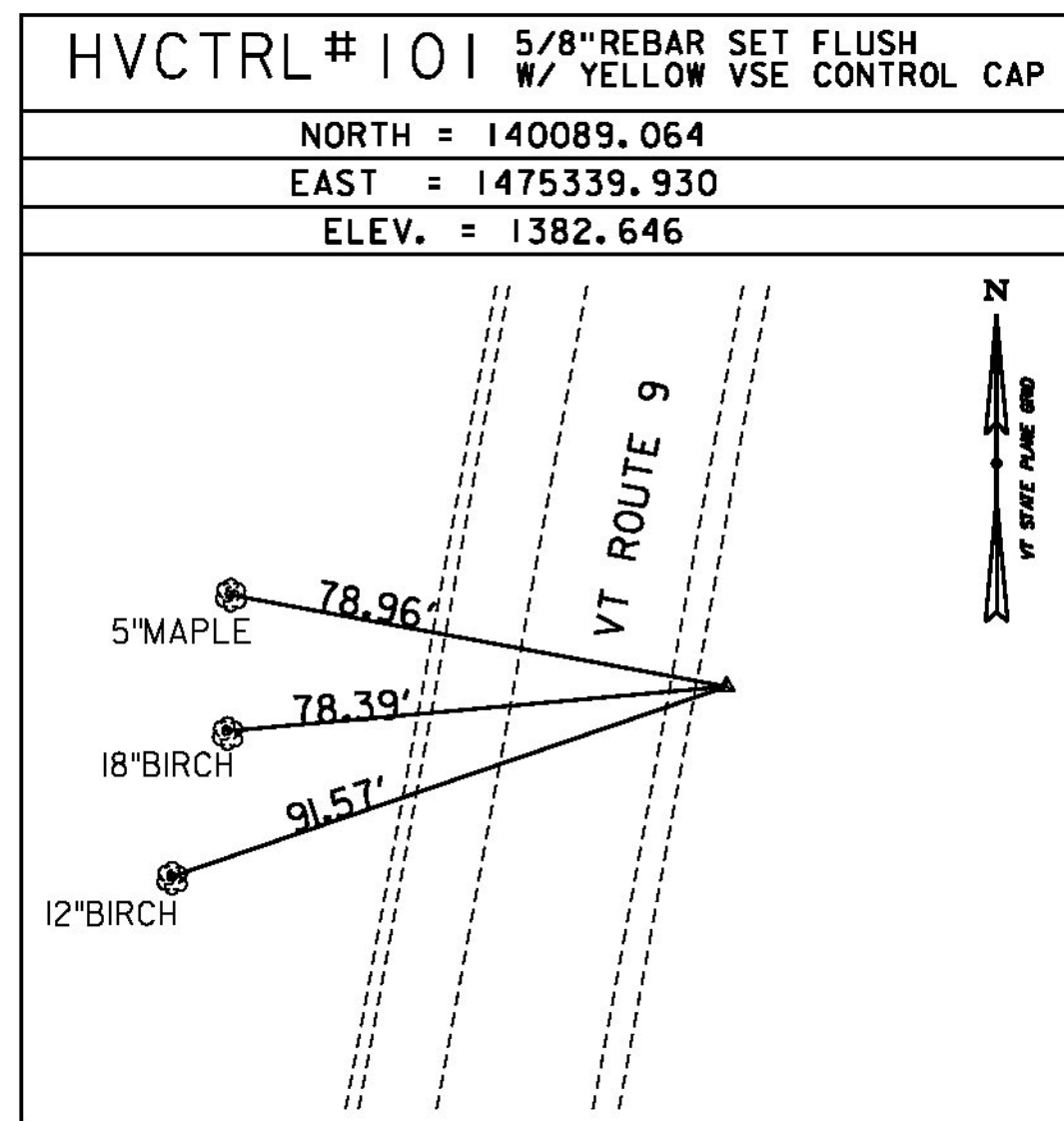
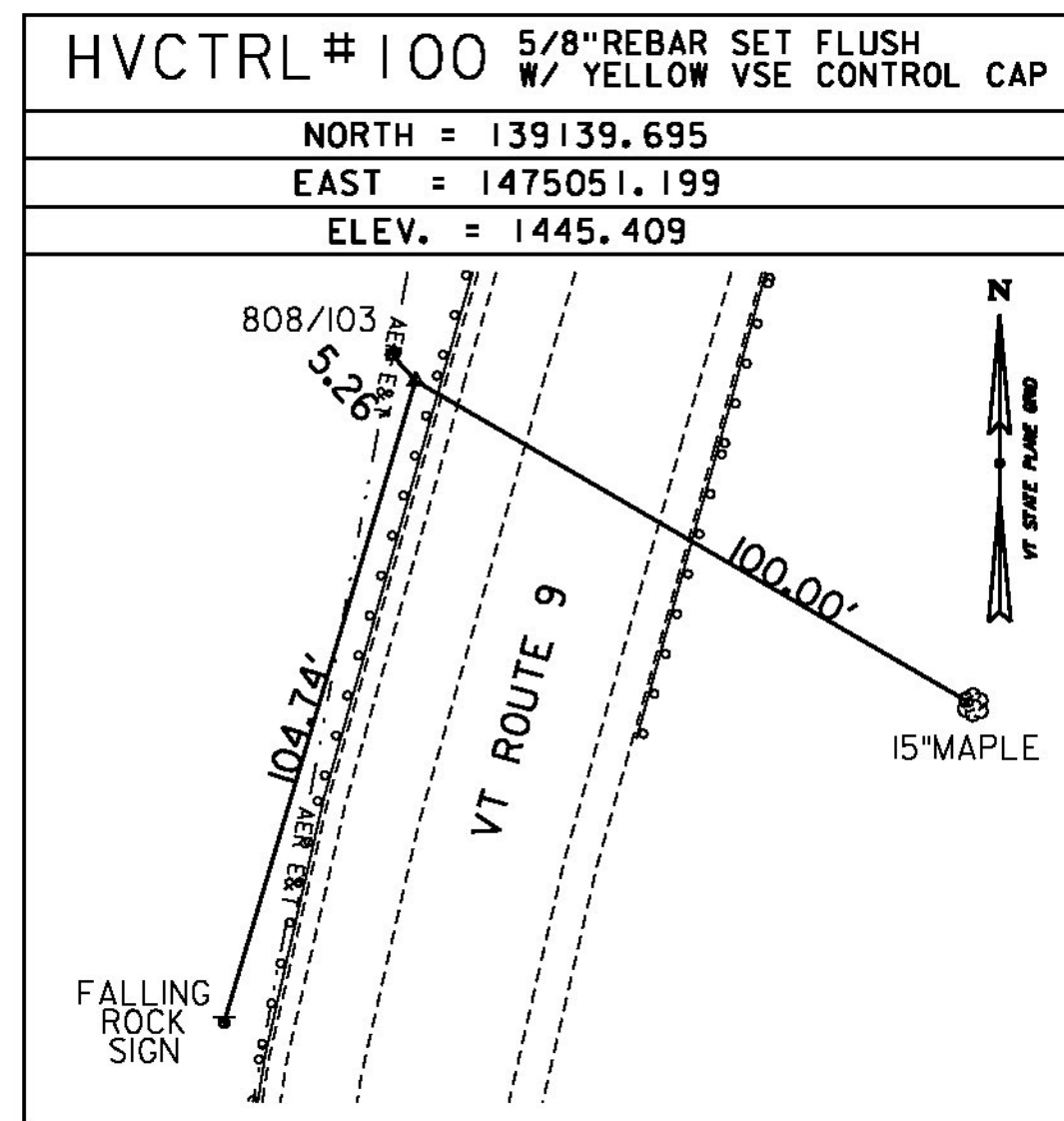
STATION IS A GPS CONTINUOUSLY OPERATING REFERENCE STATION. STATION IS THE ANTENNA REFERENCE POINT OF THE GPS ANTENNA. LOCATED AT THE BENNINGTON, VERMONT FIRE DEPARTMENT, THE MONUMENT IS ATTACHED TO A THREE STORY CONCRETE & BRICK BUILDING WITH A 10 FT CONCRETE FOUNDATION BUILT IN 1998. THE MAST IS A 1.75 INCH DIA. GALV PIPE THAT IS 108 INCHES LONG. THE MAST IS ATTACHED TO A STEEL MOUNTING FRAME WITH THREE ATTACHMENTS CONSISTING OF 3/8 INCH SS THROUGH BOLTS. THE MOUNTING FRAME IS ATTACHED TO THE BUILDING USING 6 ATTACHMENT POINTS. ALL 6 ATTACHMENTS ARE THROUGH BOLTED AND CONSIST OF 1/2 INCH SS THREADED ROD AND NUTS.

B95016

PID AB7332
 N = 139409.350
 E = 1475065.907
 ELEV. = 1419.948

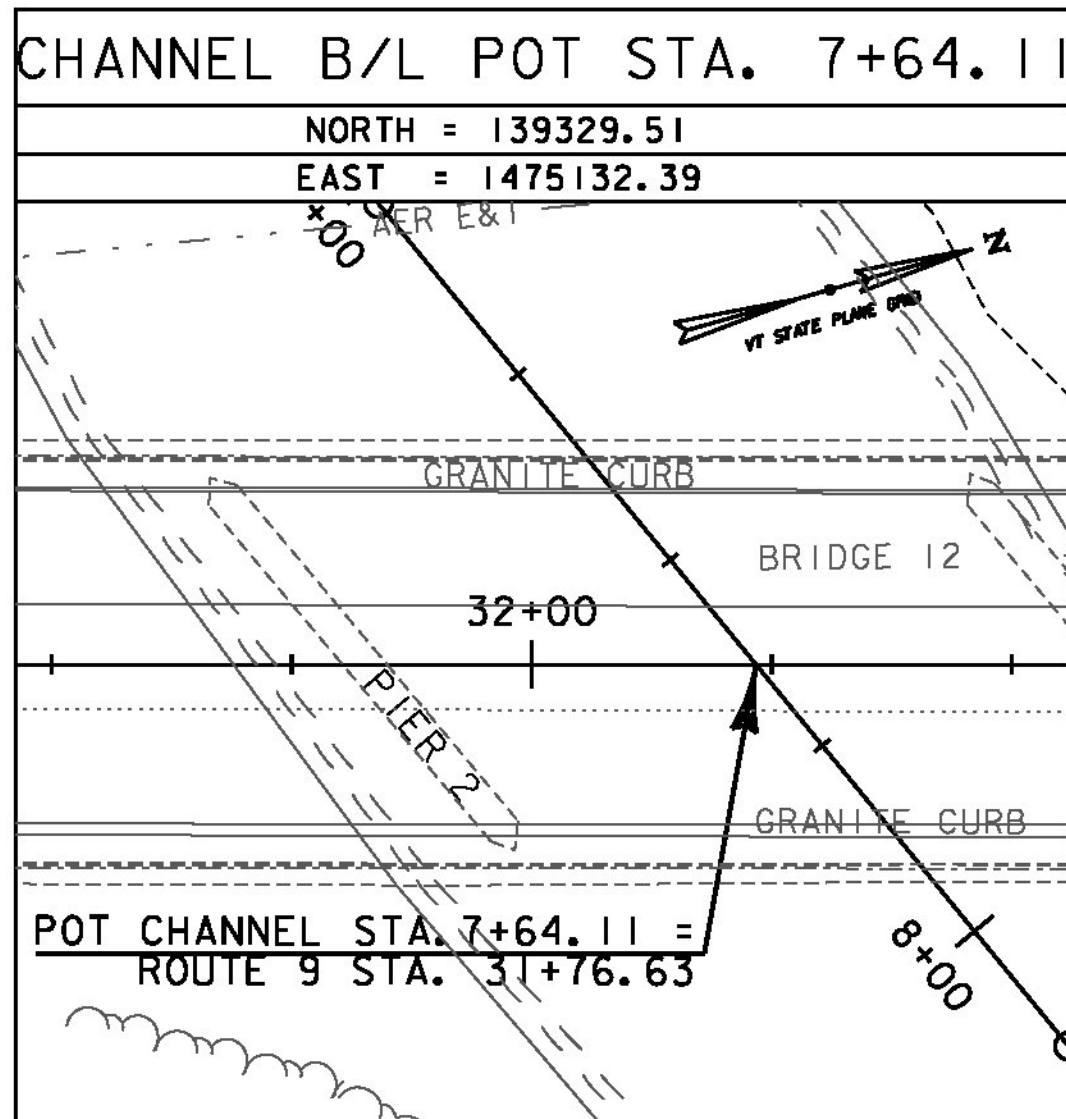
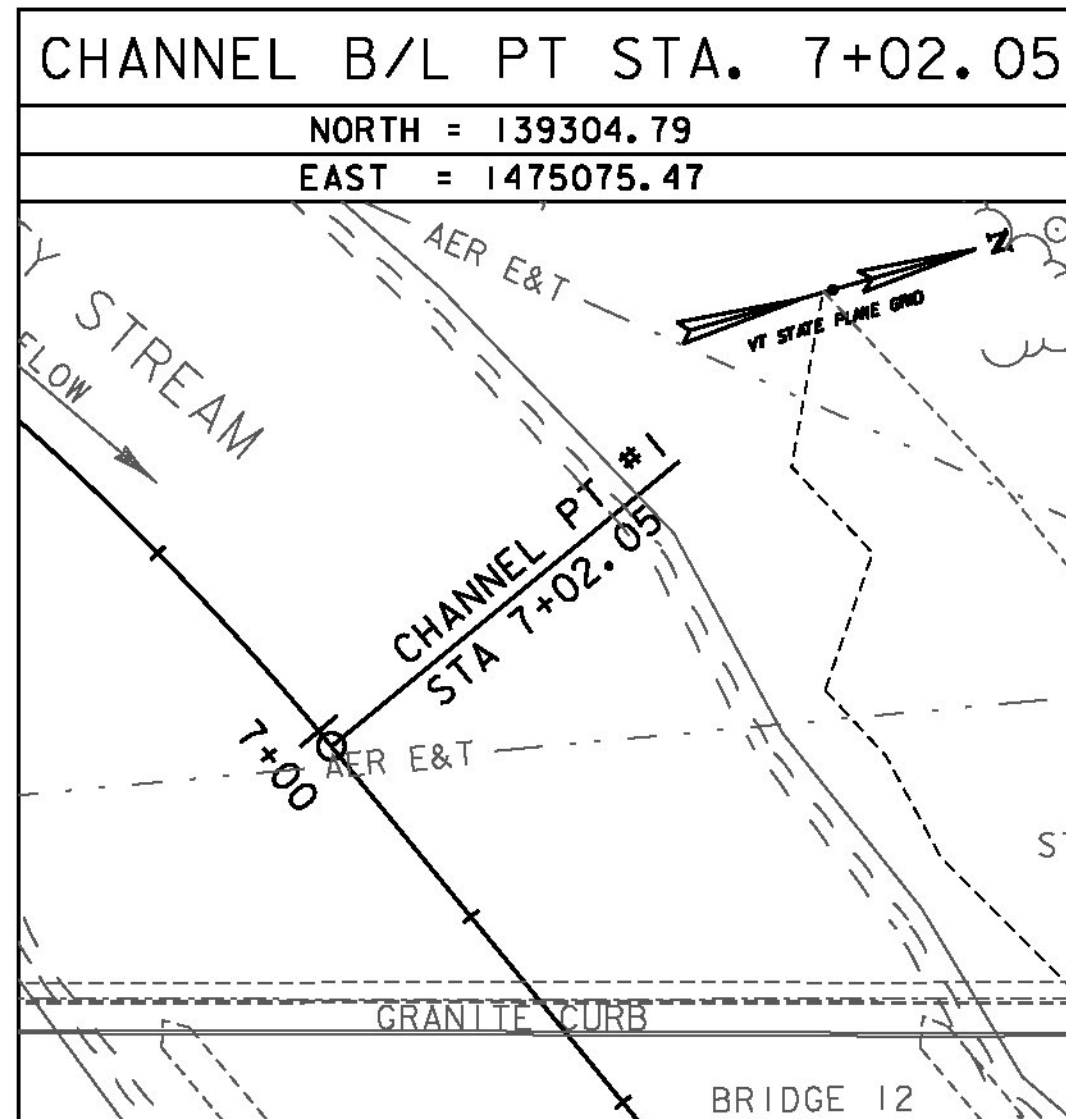
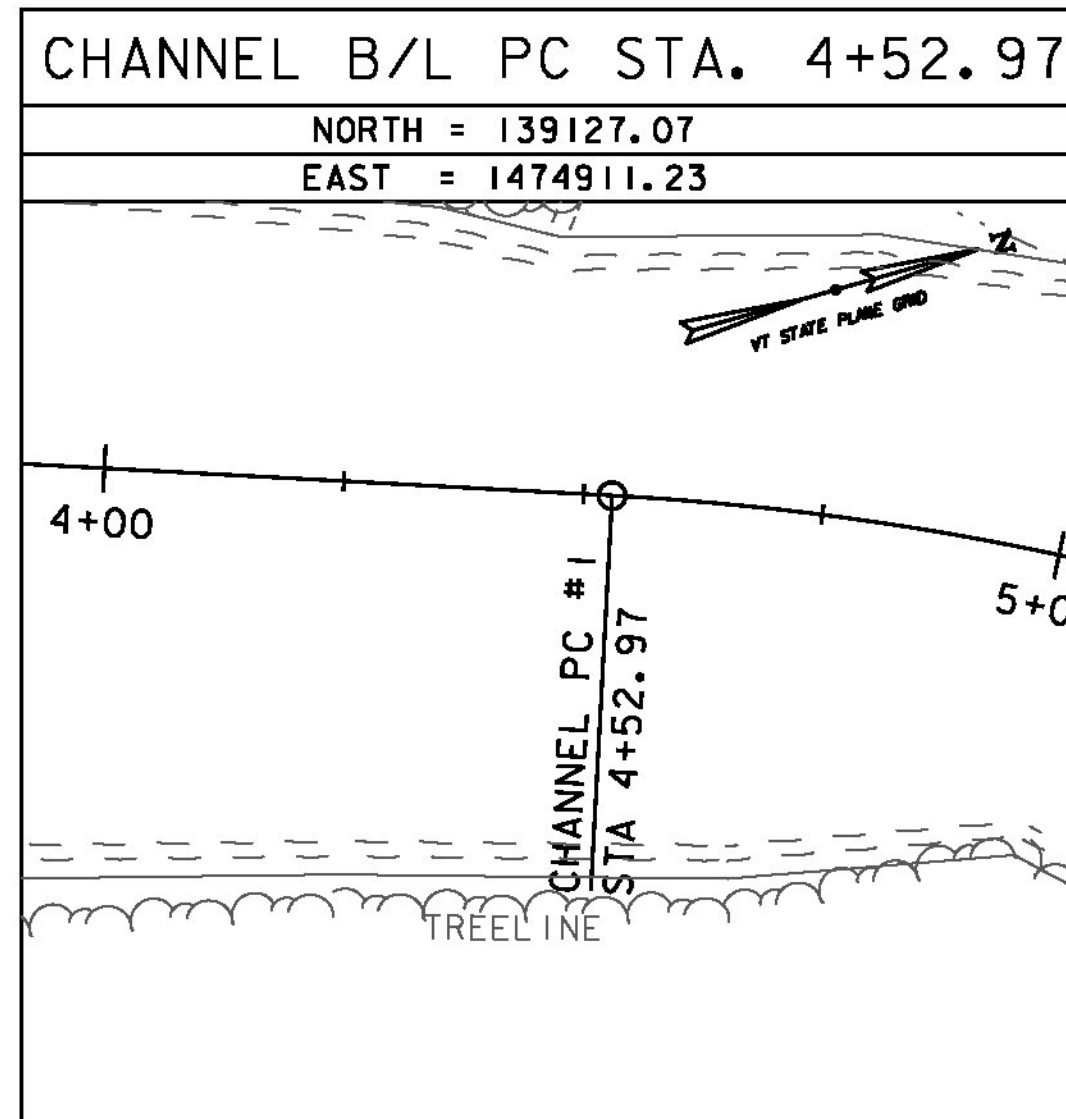
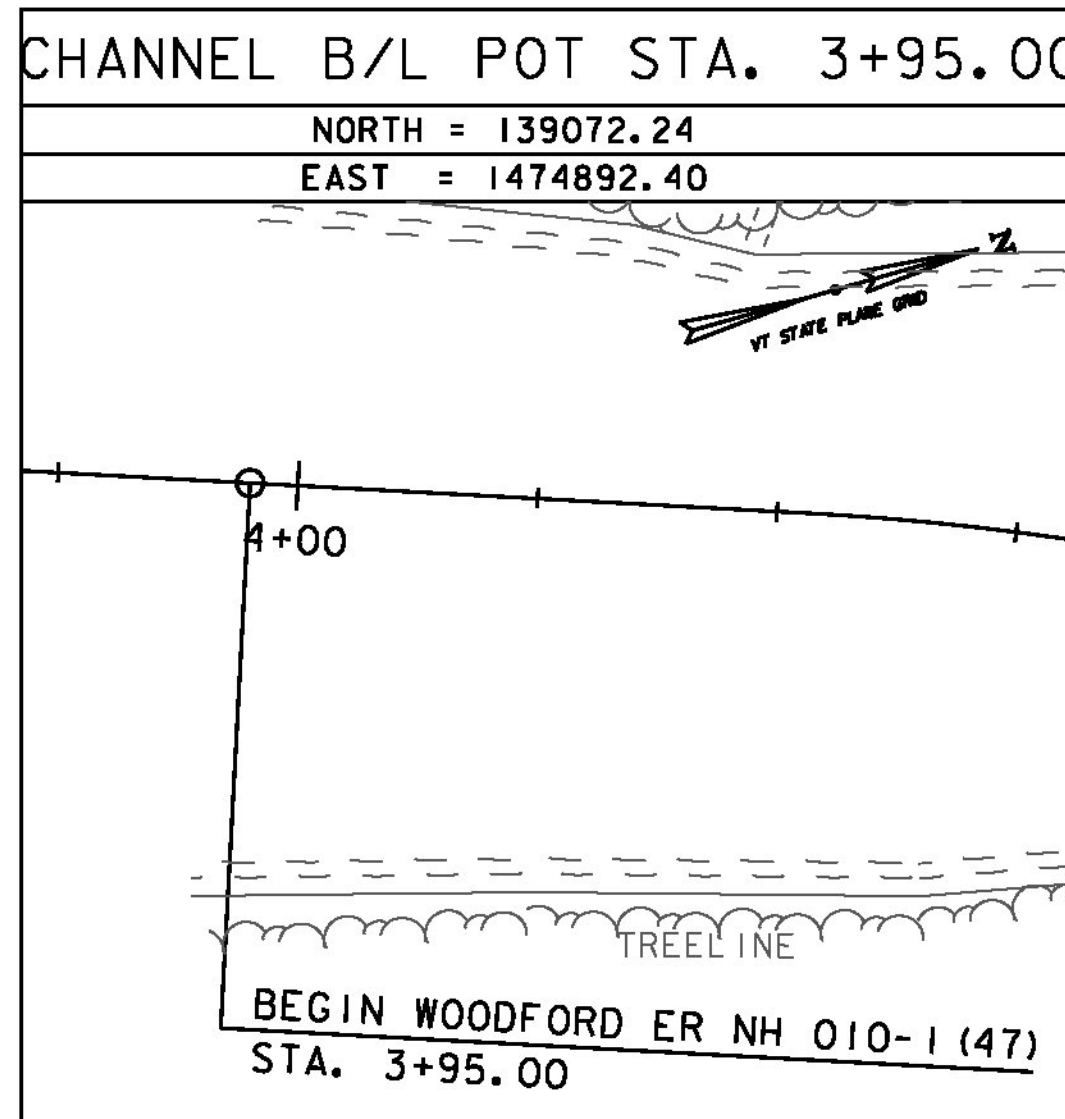
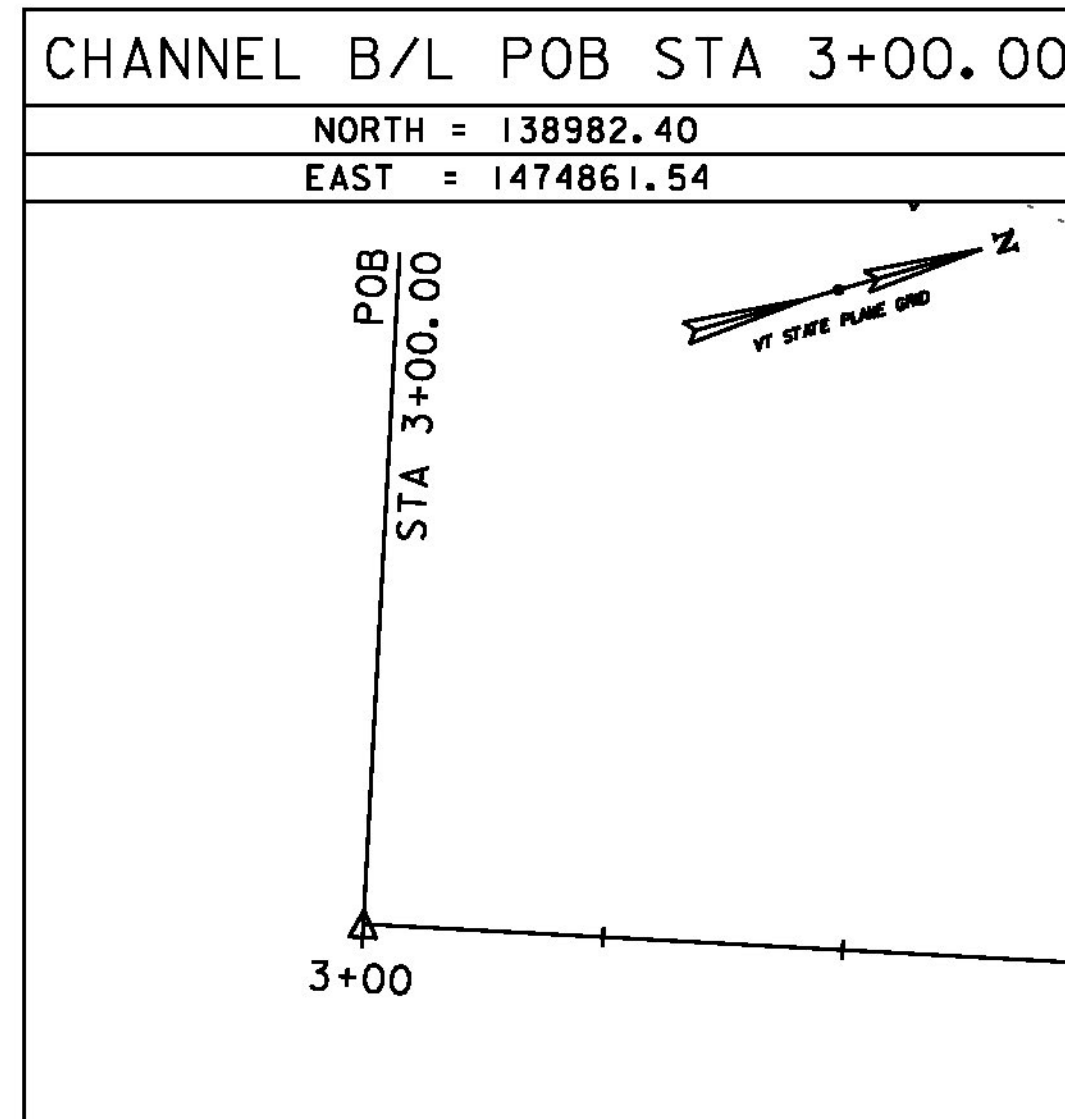
DESCRIBED BY VERMONT AGENCY OF TRANSPORTATION 1995 (CHR). GENERAL LOCATION, WOODFORD, VT., ABOUT 4 MI (6.4 KM) EAST OF BENNINGTON. TO REACH FROM THE INTERSECTION OF U.S.ROUTE 7 AND VT ROUTE 9 IN BENNINGTON, GO EAST ALONG VT ROUTE 9 FOR 5.2 MI (8.4 KM) TO THE INTERSECTION OF A GRAVEL ROAD RIGHT, JUST NORTH OF THE VT ROUTE 9 BRIDGE OVER THE ROARING BRANCH. TURN RIGHT AND GO WEST ALONG THE GRAVEL ROAD FOR ABOUT 25 M (82.0 FT) TO THE MARK ON THE LEFT IN A FLAT AREA BETWEEN THE ROAD AND THE TOP OF A STEEP BANK LEADING DOWN TO THE ROARING BRANCH. THE MARK IS SET 5 CM BELOW GROUND SURFACE IN THE TOP OF A 30 CM DIAMETER CONCRETE MONUMENT POURED TO A DEPTH OF 1.6 M (5.2 FT). IT IS 4.7 M (15.4 FT) SOUTH OF AND ABOUT LEVEL WITH THE CENTERLINE OF THE GRAVEL ROAD, 24.2 M (79.4 FT) WEST OF THE NORTHWEST ABUTMENT CORNER OF THE VT ROUTE 9 BRIDGE OVER THE ROARING BRANCH, 10.4 M (34.1 FT) WEST-NORTHWEST OF POLE NO. 2/102/345/812, AND 3.1 M (10.2 FT) NORTH OF A FIBERGLASS WITNESS POST.

TRAVERSE TIES



* CONTROL TIES COMPLETED: FEBRUARY 12, 2013 BY VSE, T. SCARZELLO-PC, T. COMSTOCK

ALIGNMENT TIES



DATUM	
VERTICAL	NAVD 88 FT
HORIZONTAL	NAD 83(2011) sFT
ADJUSTMENT	NONE

PROJECT NAME: WOODFORD	
PROJECT NUMBER: ER NH 010-1(47)	
FILE NAME: z12b402+1e.dgn	PLOT DATE: 12/03/2014
PROJECT LEADER: E. ATKINS	DRAWN BY: C. MORIN
DESIGNED BY: M. BRADLEY	CHECKED BY: E. ATKINS
TIE SHEET 1	SHEET 6 OF 35

