

GPS CONTROL POINTS

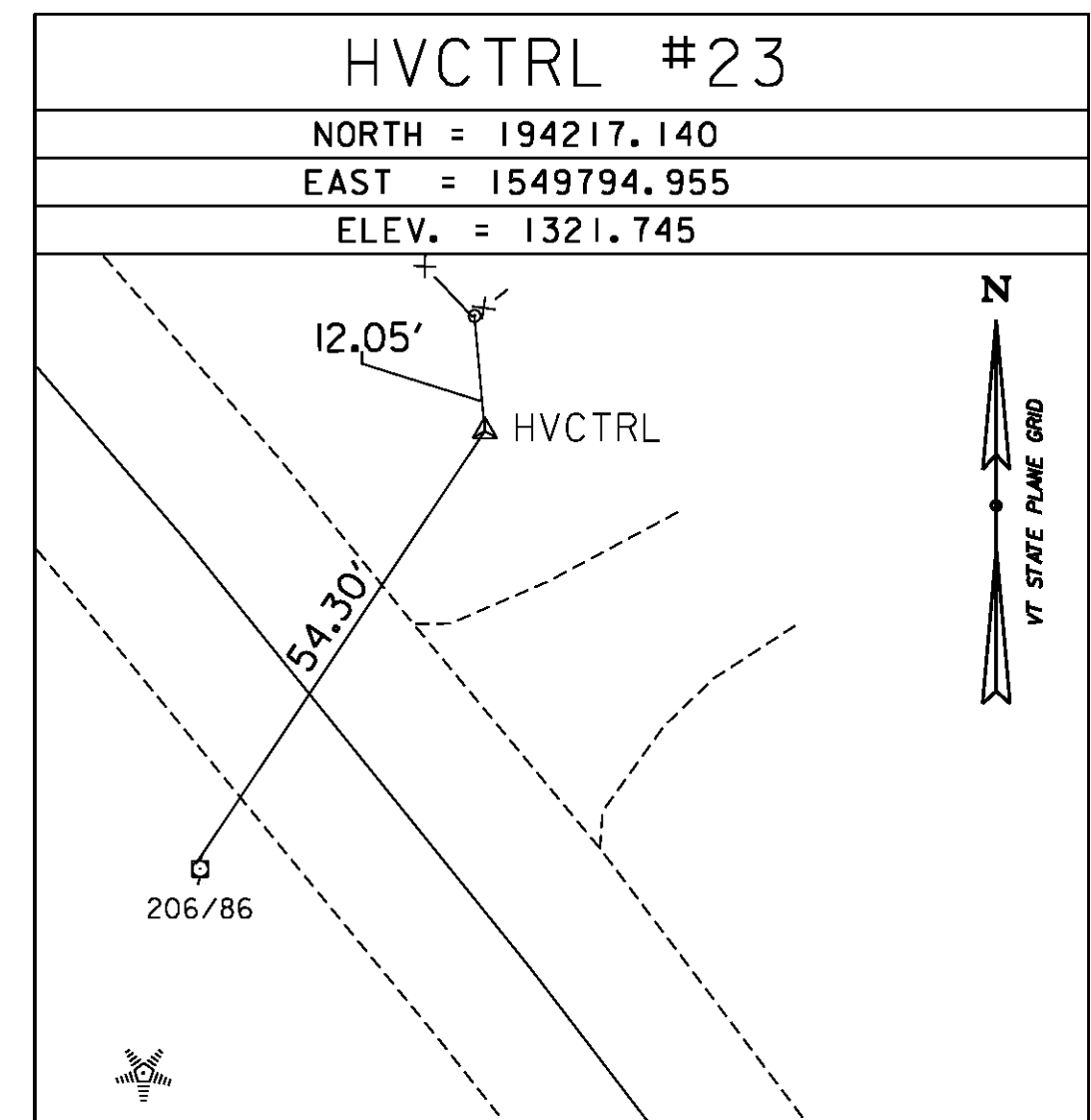
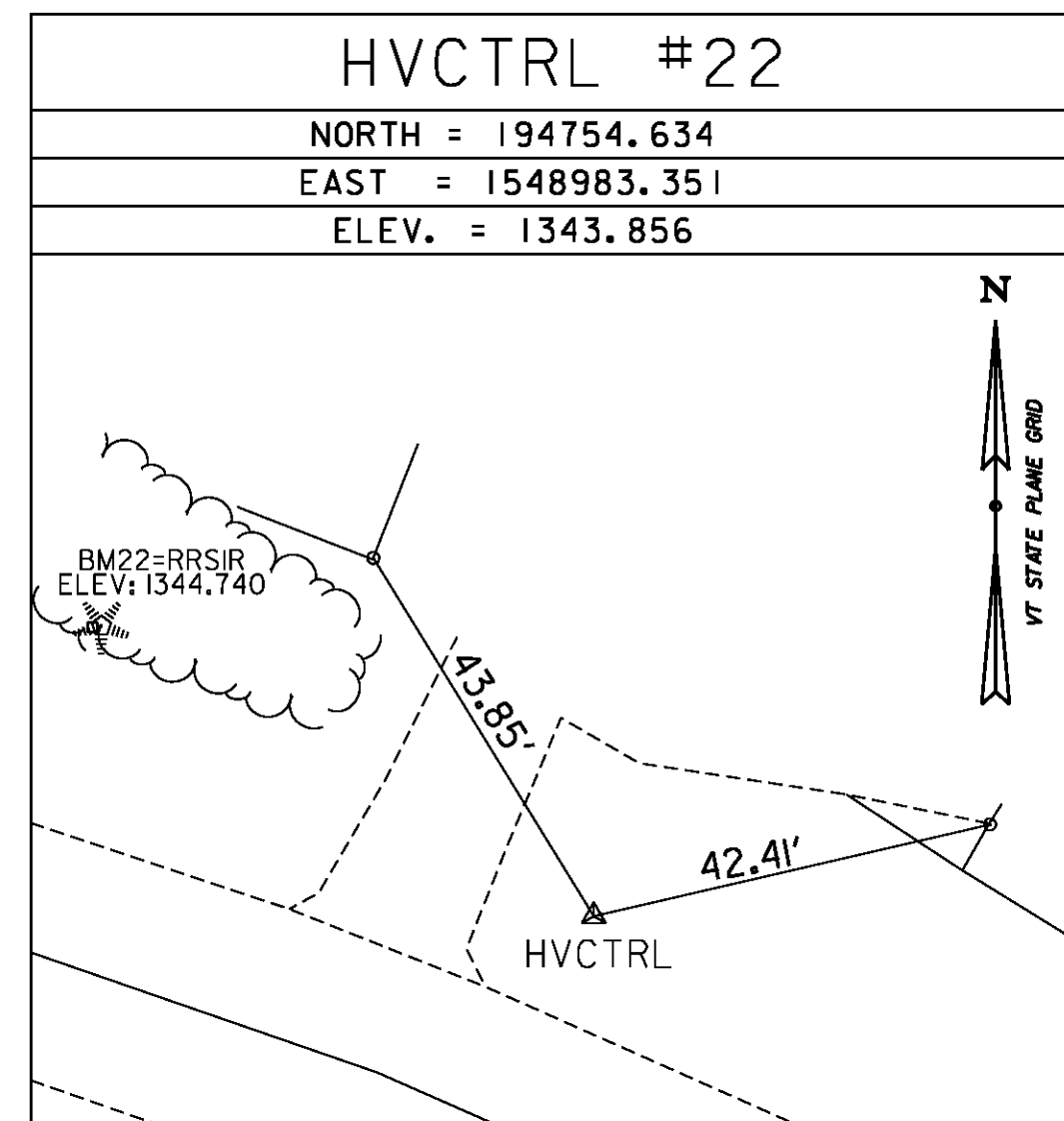
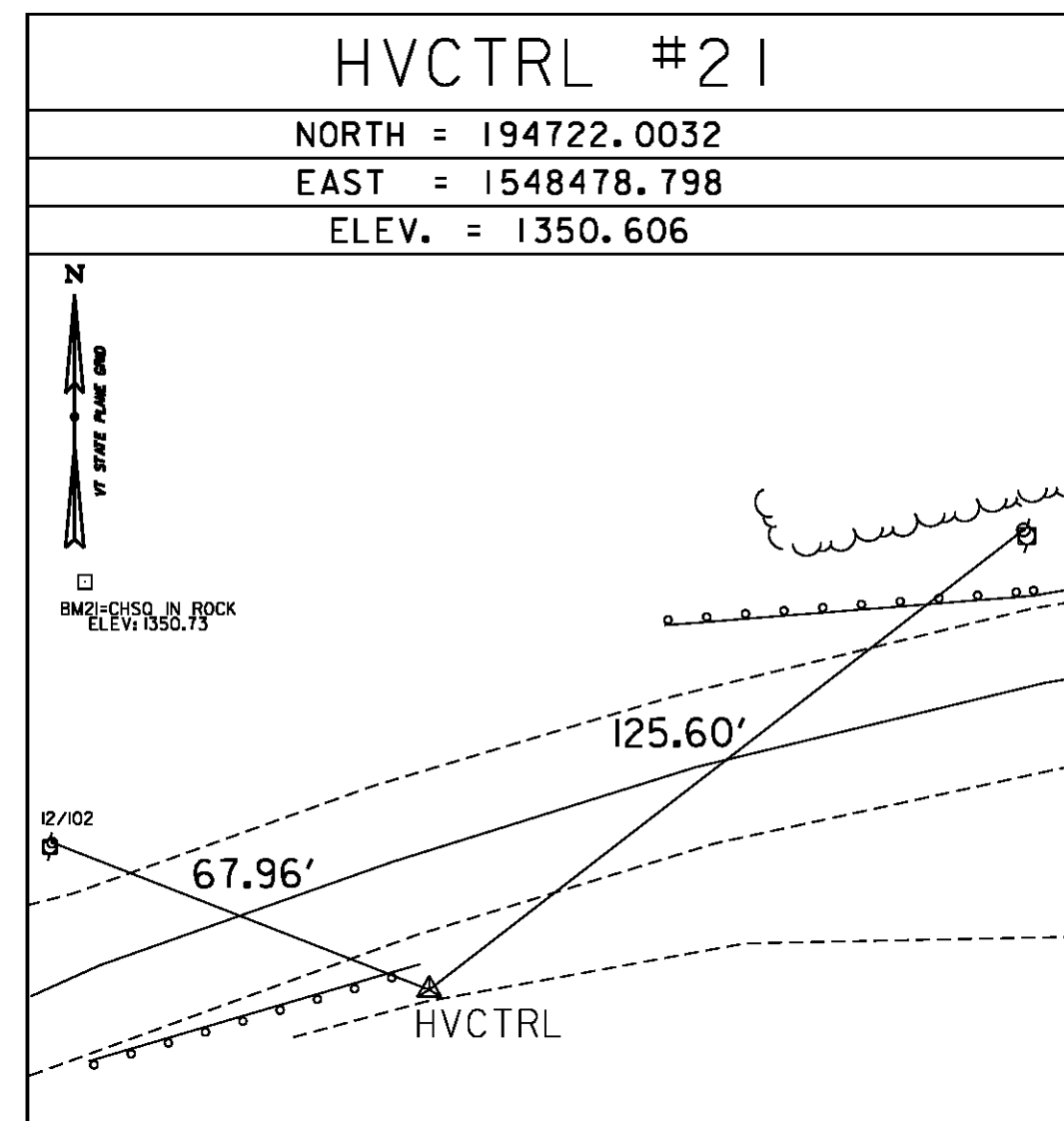
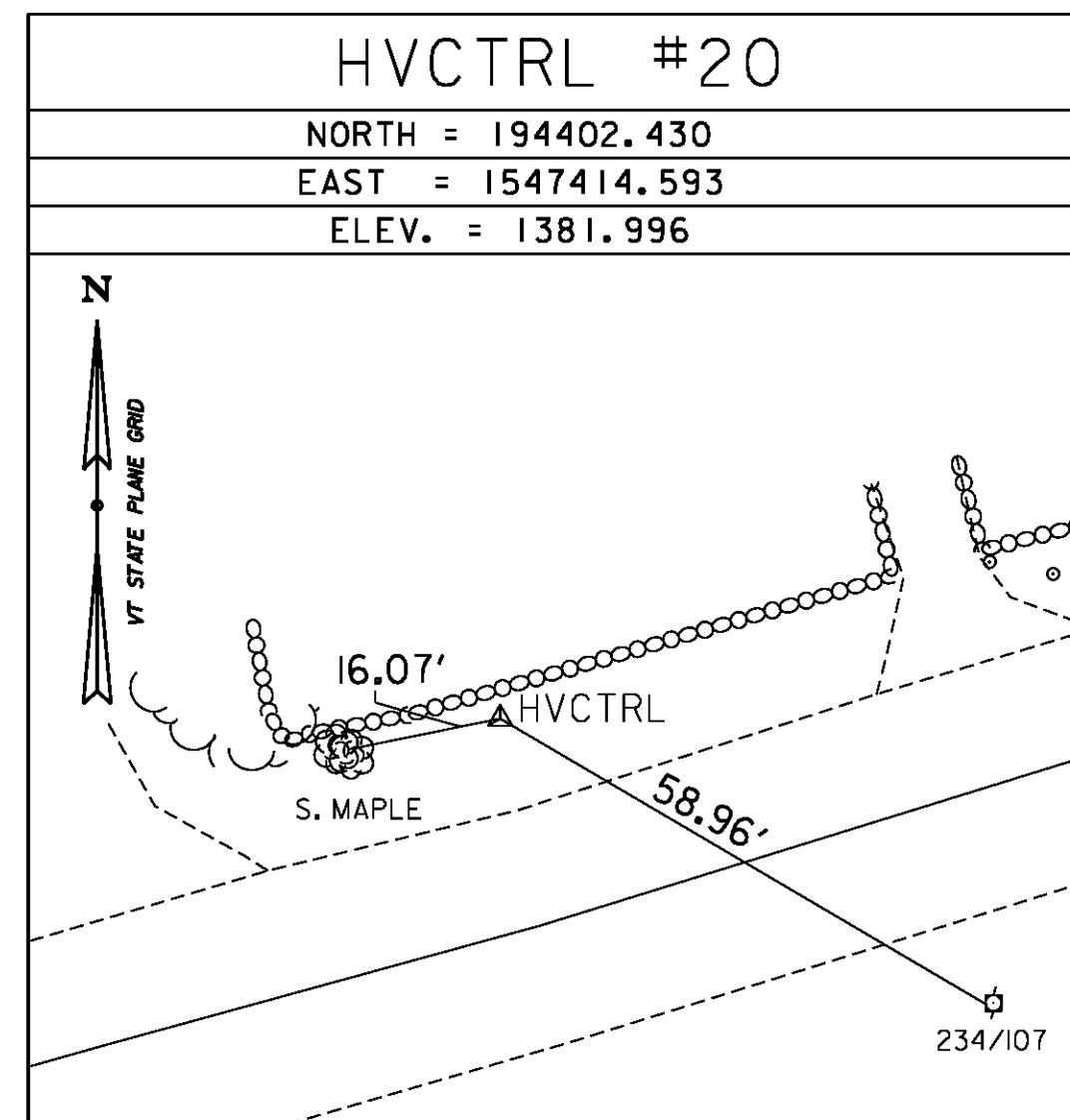
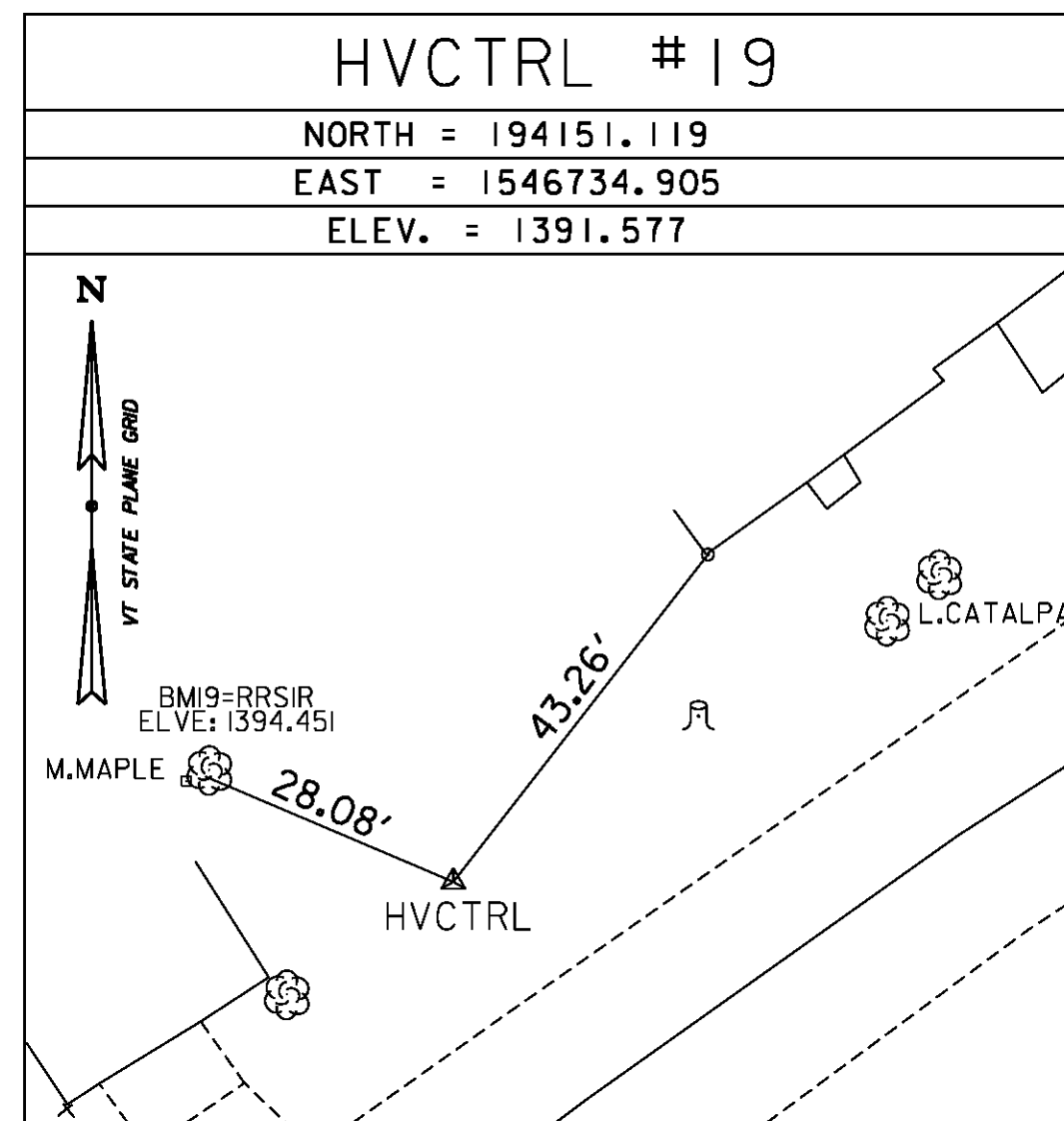
--- HVCTRL #428 ---

BRIDGE

NORTH = 202295.934
EAST = 1564192.960
ELEV. = 927.723

REBAR WITH ALUMINIUM CAP

TRAVERSE TIES



ALIGNMENT TIES

NORTH = _____
EAST = _____
ELEV. = _____

NORTH = _____
EAST = _____
ELEV. = _____

NORTH = _____
EAST = _____
ELEV. = _____

NORTH = _____
EAST = _____
ELEV. = _____

NORTH = _____
EAST = _____
ELEV. = _____

DATUM	
VERTICAL	NAVD 88
HORIZONTAL	NAD 83 (2007)
ADJUSTMENT	COMPASS

PROJECT NAME: WARDBORO-JAMAICA	
PROJECT NUMBER: ER STP 013-1(17)	
FILE NAME: XI2B236T1.DGN	PLOT DATE: 2/26/2014
PROJECT LEADER: K. UPMAL	DRAWN BY: S. DONOVAN
DESIGNED BY: B. KIPP	CHECKED BY: P. BEYOR
TIE SHEET 5	SHEET 19 OF 444