

GPS CONTROL POINTS

--- HVCTRL #402 ---

T 127 AZ MK
 NORTH = 209918.831
 EAST = 1577683.039
 ELEV. = 553.597

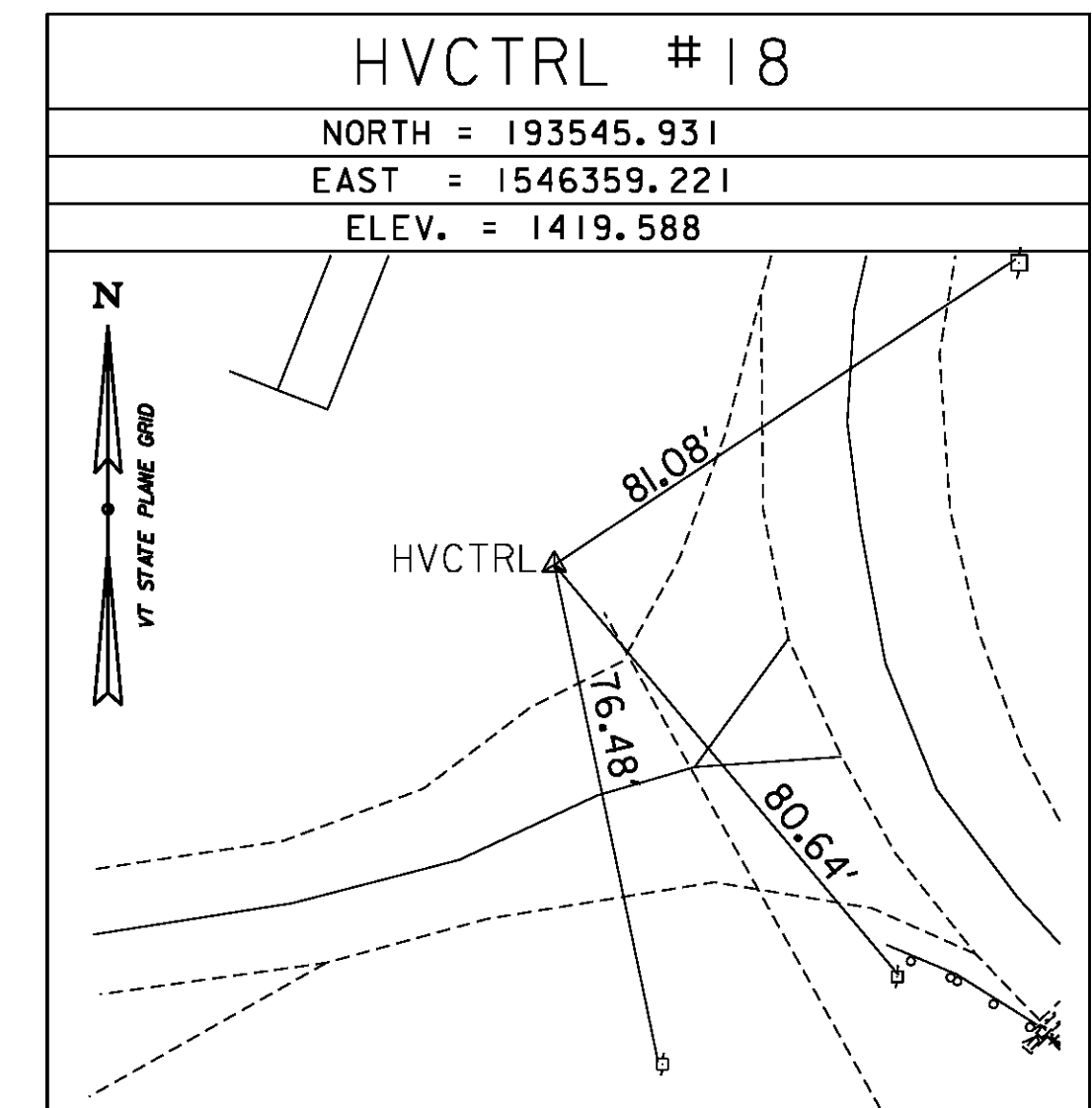
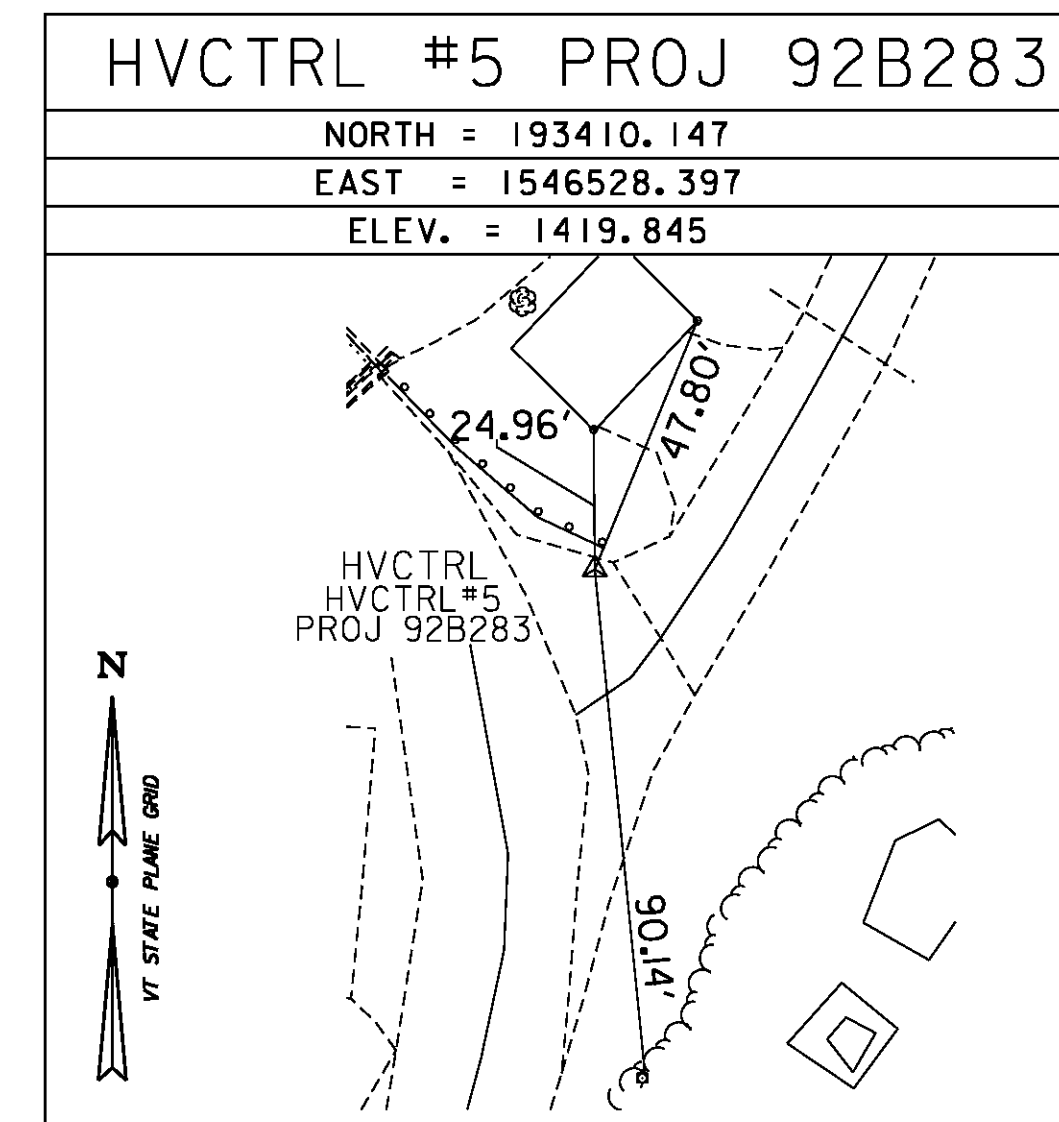
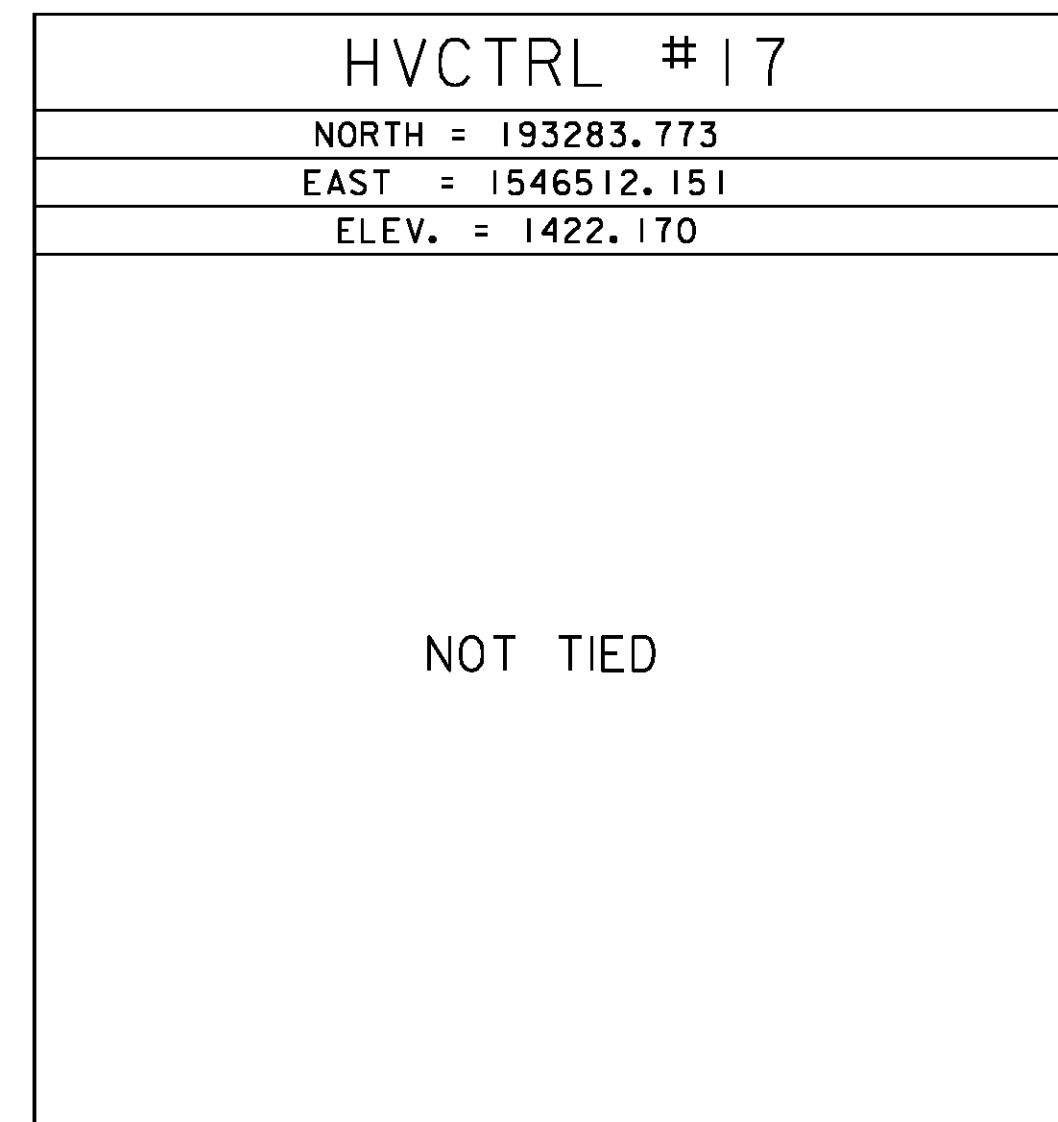
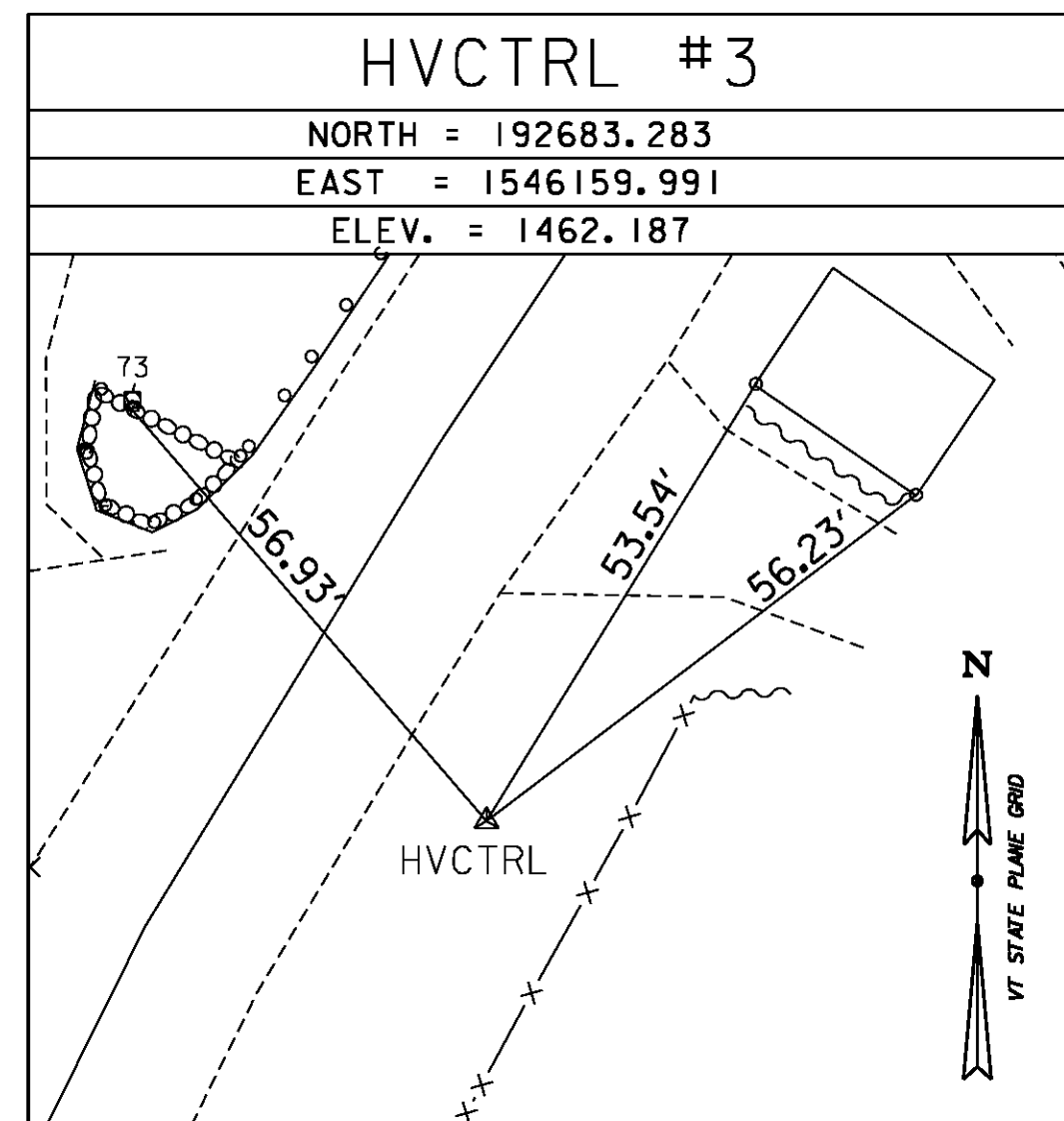
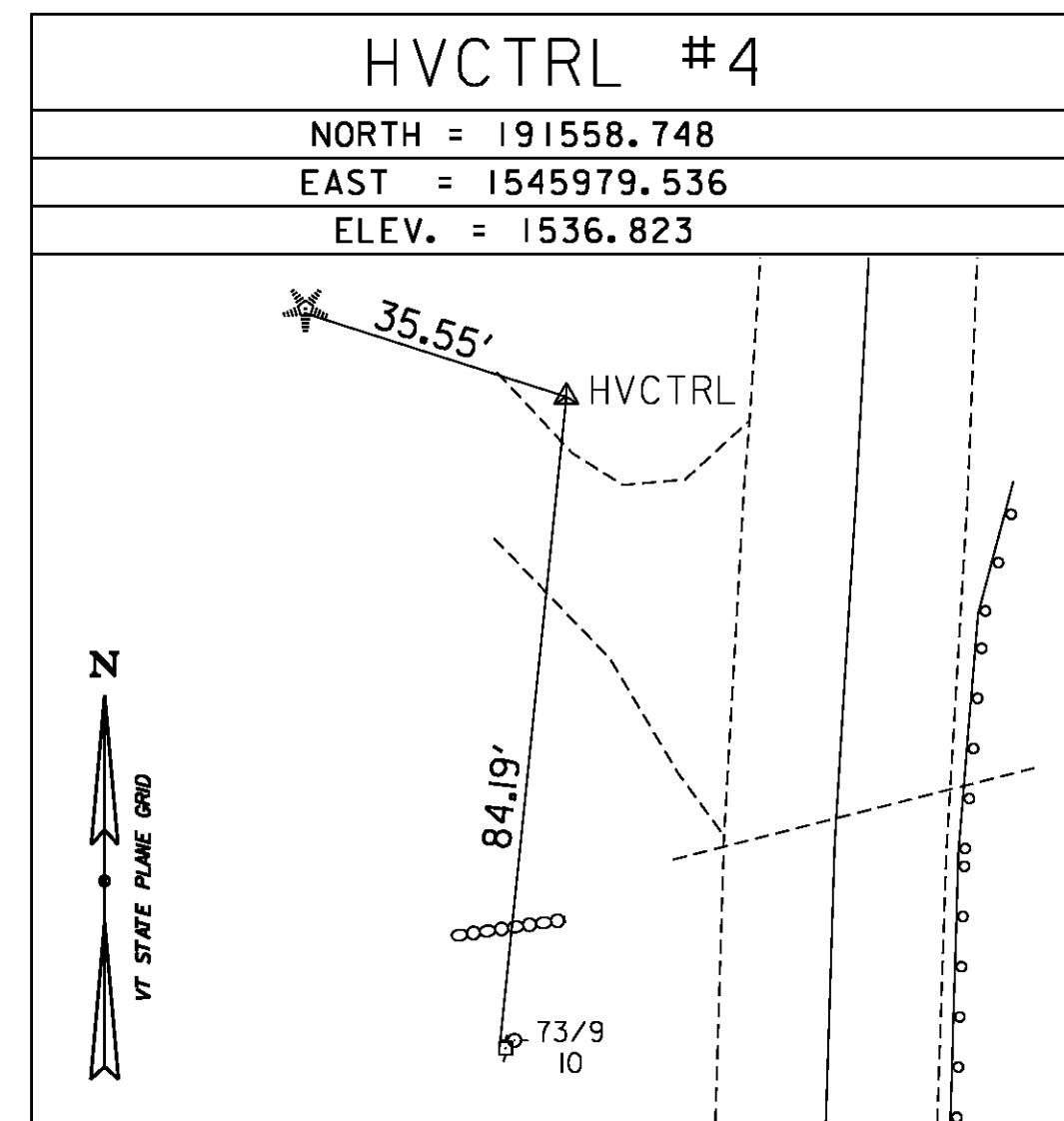
GENERAL LOCATION, JAMAICA, VT.
 TO REACH FROM THE MOST SOUTHERLY INTERSECTION OF VT ROUTES 100 AND 30 N EAST JAMAICA GO EAST ALONG VT ROUTE 30 FOR 0.2 MI (0.3 KM) TO THE MARK ON THE RIGHT OPPOSITE A LEDGE CUT. THE MARK IS SET IN THE TOP OF A FENO TYPE MONUMENT FLUSH WITH GROUND SURFACE. IT IS 1.9 M (6.2 FT) SOUTH OF AND ABOUT LEVEL WITH THE SOUTH EDGE OF PAVEMENT OF VT ROUTE 30, 5.0 M (16.4 FT) WEST NORTHWEST OF POLE NO.594/514, 21.0 M (68.9 FT) NORTHWEST OF A 60 CM PINE, AND 0.3 NORTH OF A FIBERGLASS WITNESS POST.

--- HVCTRL #414 ---

W BROOK
 NORTH = 205589.173
 EAST = 1570478.825
 ELEV. = 726.710

REBAR WITH ALUMINIUM CAP.
 SEE TRAVERSE TIE BOX BELOW FOR DETAILS.

TRAVERSE TIES



ALIGNMENT TIES

NORTH = _____
 EAST = _____
 ELEV. = _____

NORTH = _____
 EAST = _____
 ELEV. = _____

NORTH = _____
 EAST = _____
 ELEV. = _____

NORTH = _____
 EAST = _____
 ELEV. = _____

NORTH = _____
 EAST = _____
 ELEV. = _____

DATUM	
VERTICAL	NAVD 88
HORIZONTAL	NAD 83 (2007)
ADJUSTMENT	COMPASS

PROJECT NAME: WARDBORO-JAMAICA	
PROJECT NUMBER: ER STP 013-1(17)	
FILE NAME: XI2B236T1.DGN	PLOT DATE: 2/26/2014
PROJECT LEADER: K. UPMAL	DRAWN BY: S. DONOVAN
DESIGNED BY: B. KIPP	CHECKED BY: P. BEYOR
TIE SHEET 4	SHEET 18 OF 444