

GPS CONTROL POINTS

--- HVCTRL #97 ---

BILL TEMP 2
 NORTH = 195647.681
 EAST = 1556734.527
 ELEV. = 1224.417

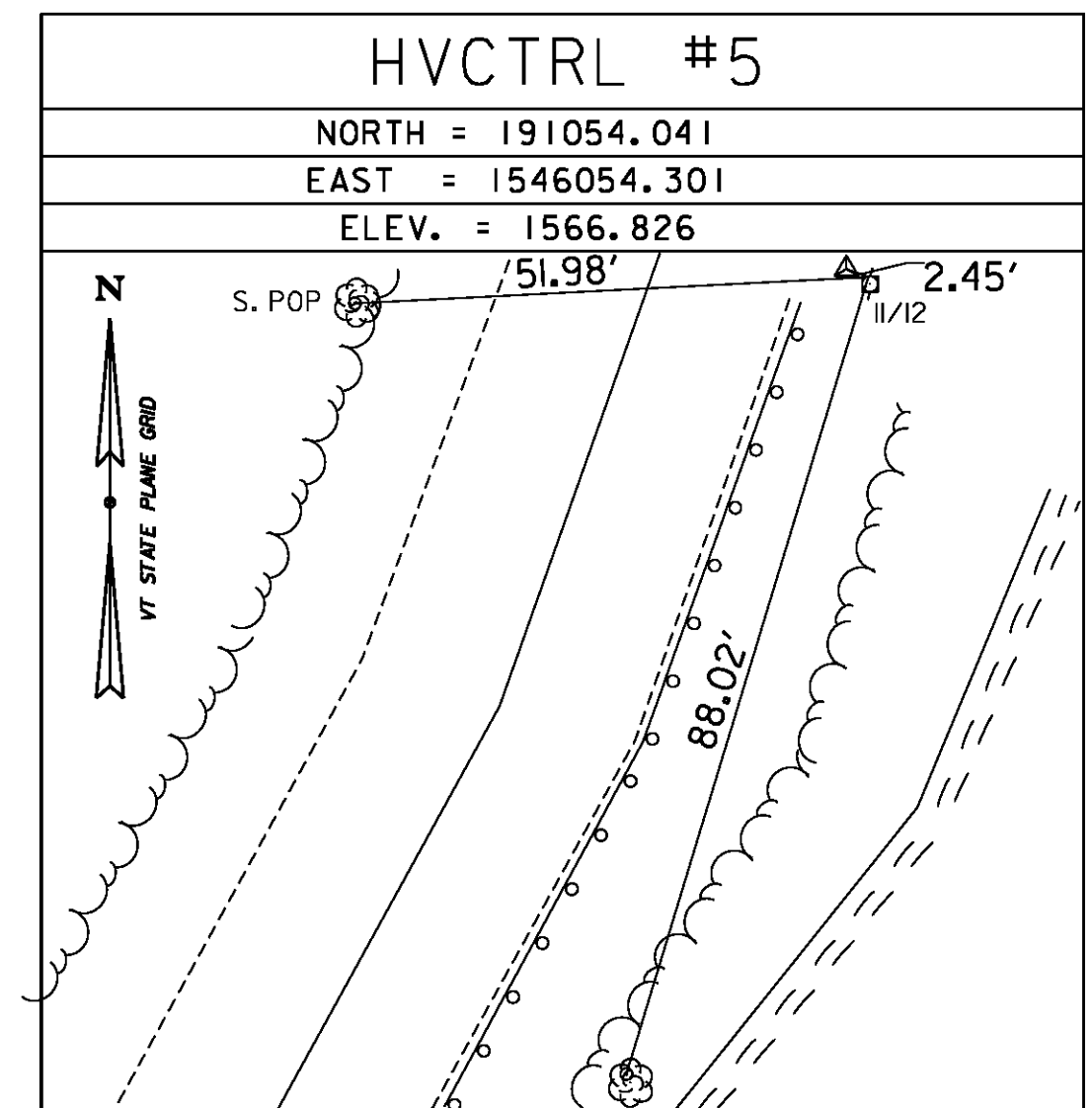
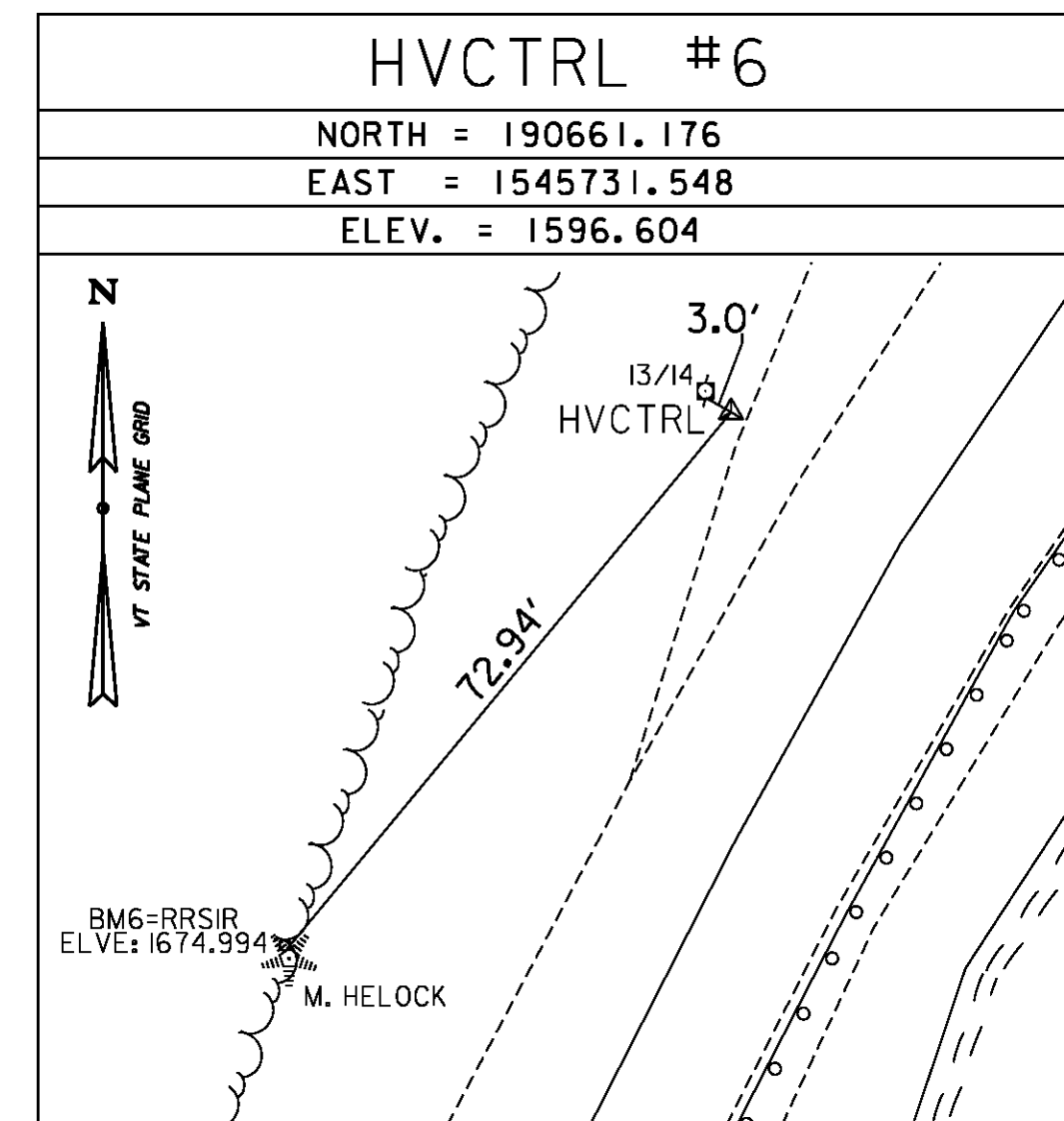
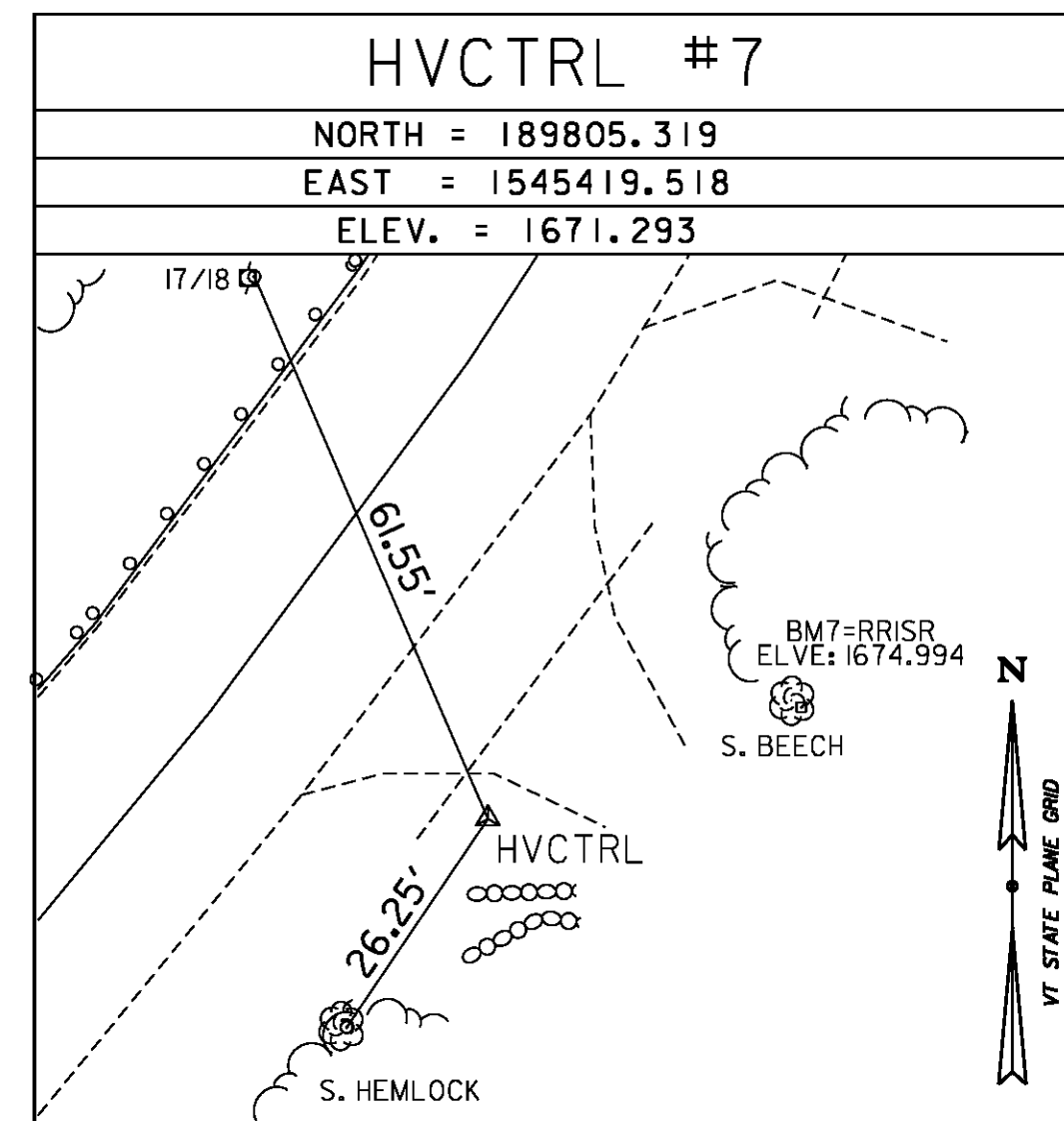
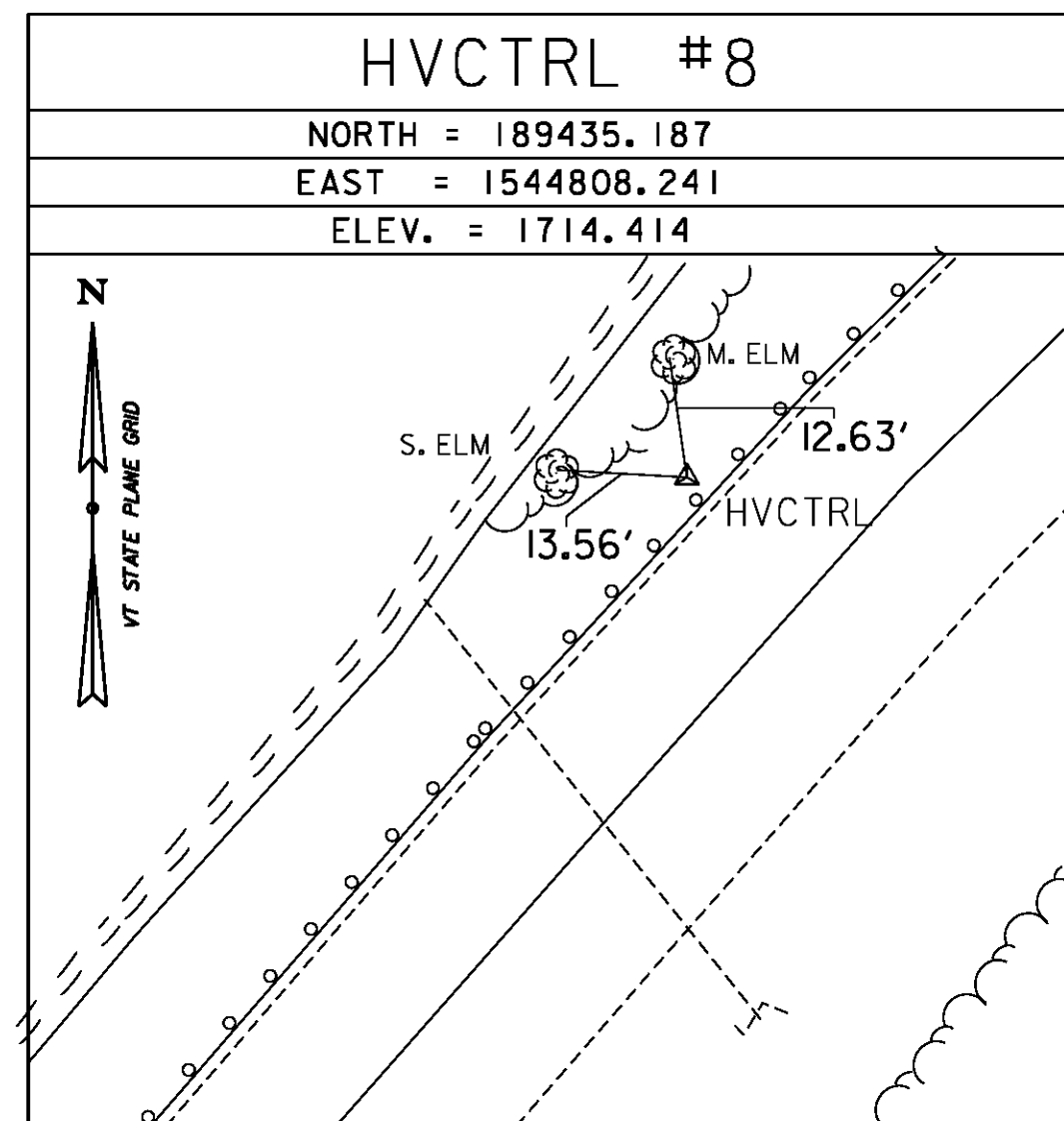
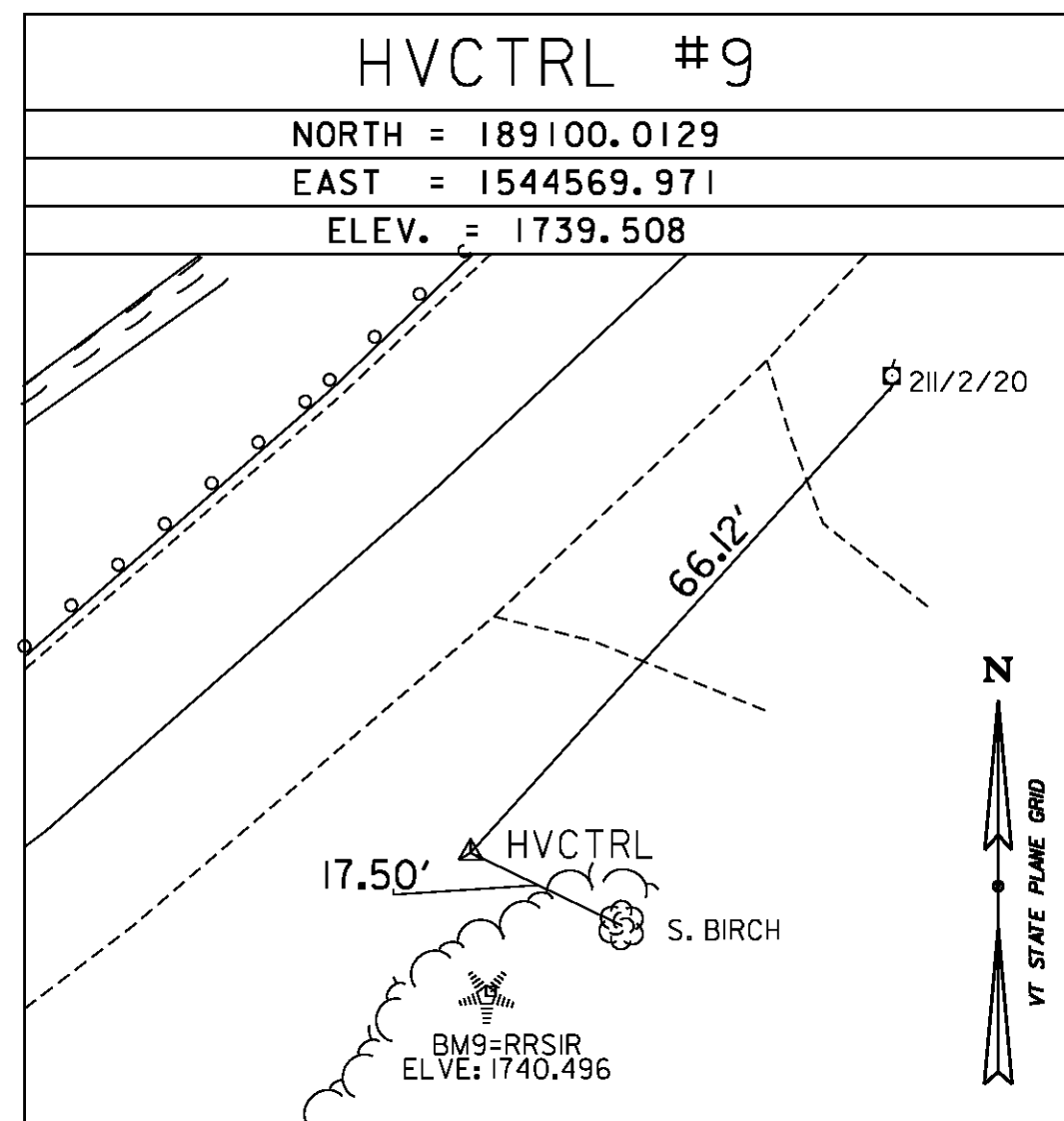
REBAR WITH ALUMINIUM CAP

--- HVCTRL #401 ---

T 127
 NORTH = 209820.851
 EAST = 1578913.605
 ELEV. = 571.838

GENERAL LOCATION, JAMAICA, VT.
 TO REACH FROM THE MOST SOUTHERLY INTERSECTION OF VT ROUTES 100 AND 30 IN EAST JAMAICA GO WEST ALONG VT ROUTE 100 AND 30 FOR ABOUT 65 M (213.3 FT) TO THE INTERSECTION OF A GRAVEL ROAD RIGHT AND THE MARK ON THE RIGHT IN THE SOUTHWEST CORNER OF THE STEPHEN BALLANTINE MEMORIAL ATHLETIC FIELD COMPLEX.
 THE MARK IS SET FLUSH WITH GROUND SURFACE IN THE TOP OF A CAST ALUMINUM MONUMENT. IT IS 10.7 M (35.1 FT) NORTH OF AND ABOUT 2 M (6.6 FT) LOWER THAN THE NORTH EDGE OF PAVEMENT OF VT ROUTE 100 AND 30, 9.5 M (31.2 FT) EAST OF THE CENTERLINE OF THE GRAVEL ROAD, 18.2 M (59.7 FT) NORTHWEST OF POLE NO. 599/5/505, AND 0.1 SOUTH OF A FIBERGLASS WITNESS POST.

TRAVERSE TIES



ALIGNMENT TIES

NORTH = _____
 EAST = _____
 ELEV. = _____

NORTH = _____
 EAST = _____
 ELEV. = _____

NORTH = _____
 EAST = _____
 ELEV. = _____

NORTH = _____
 EAST = _____
 ELEV. = _____

NORTH = _____
 EAST = _____
 ELEV. = _____

DATUM	
VERTICAL	NAVD 88
HORIZONTAL	NAD 83 (2007)
ADJUSTMENT	COMPASS

PROJECT NAME: WARDBORO-JAMAICA	
PROJECT NUMBER: ER STP 013-1(17)	
FILE NAME: XI2B2361.DGN	PLOT DATE: 2/26/2014
PROJECT LEADER: K. UPMAL	DRAWN BY: S. DONOVAN
DESIGNED BY: B. KIPP	CHECKED BY: P. BEYOR
TIE SHEET 3	SHEET 17 OF 444