

GPS CONTROL POINTS

--- HVCTRL #3 ---

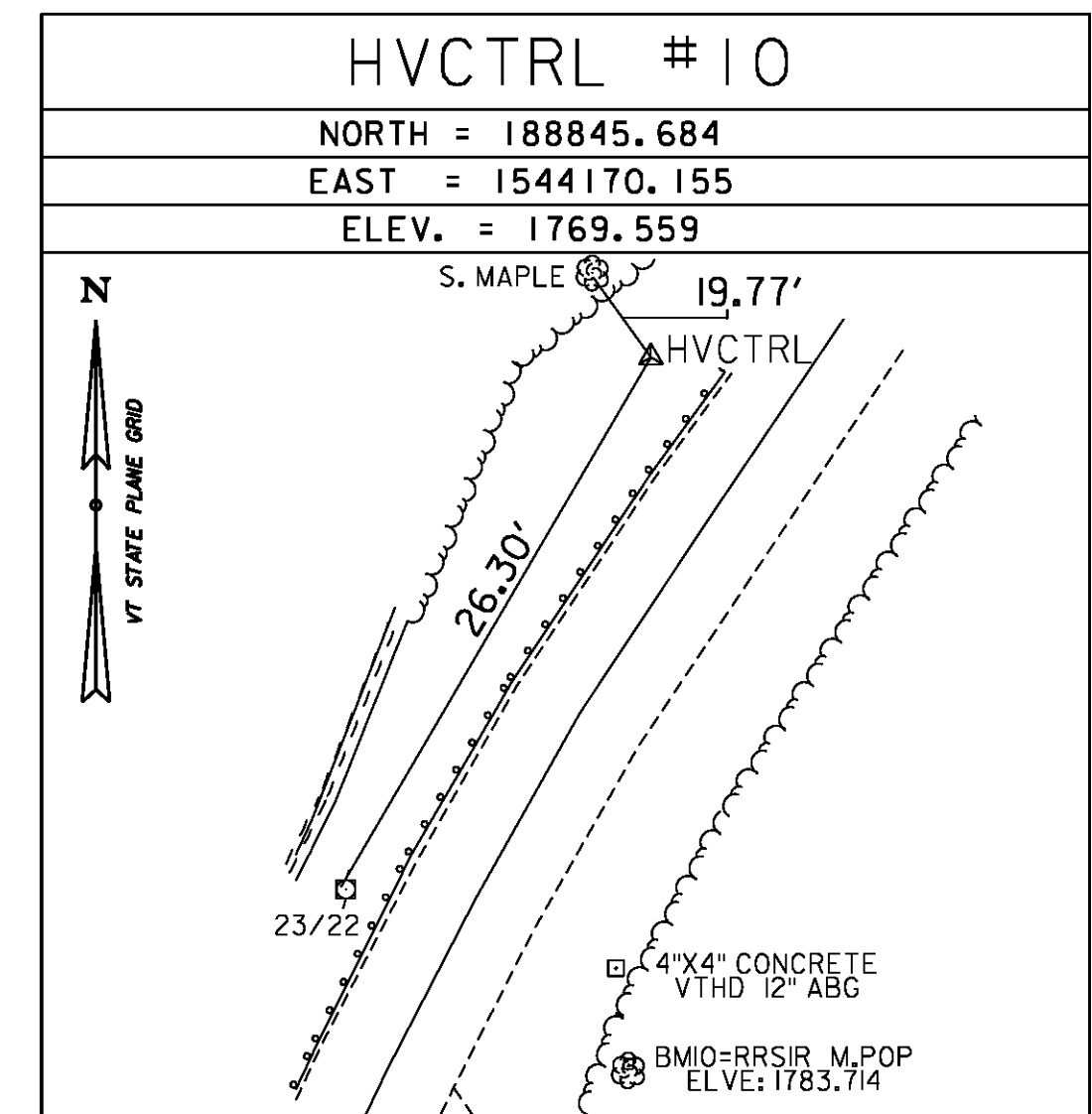
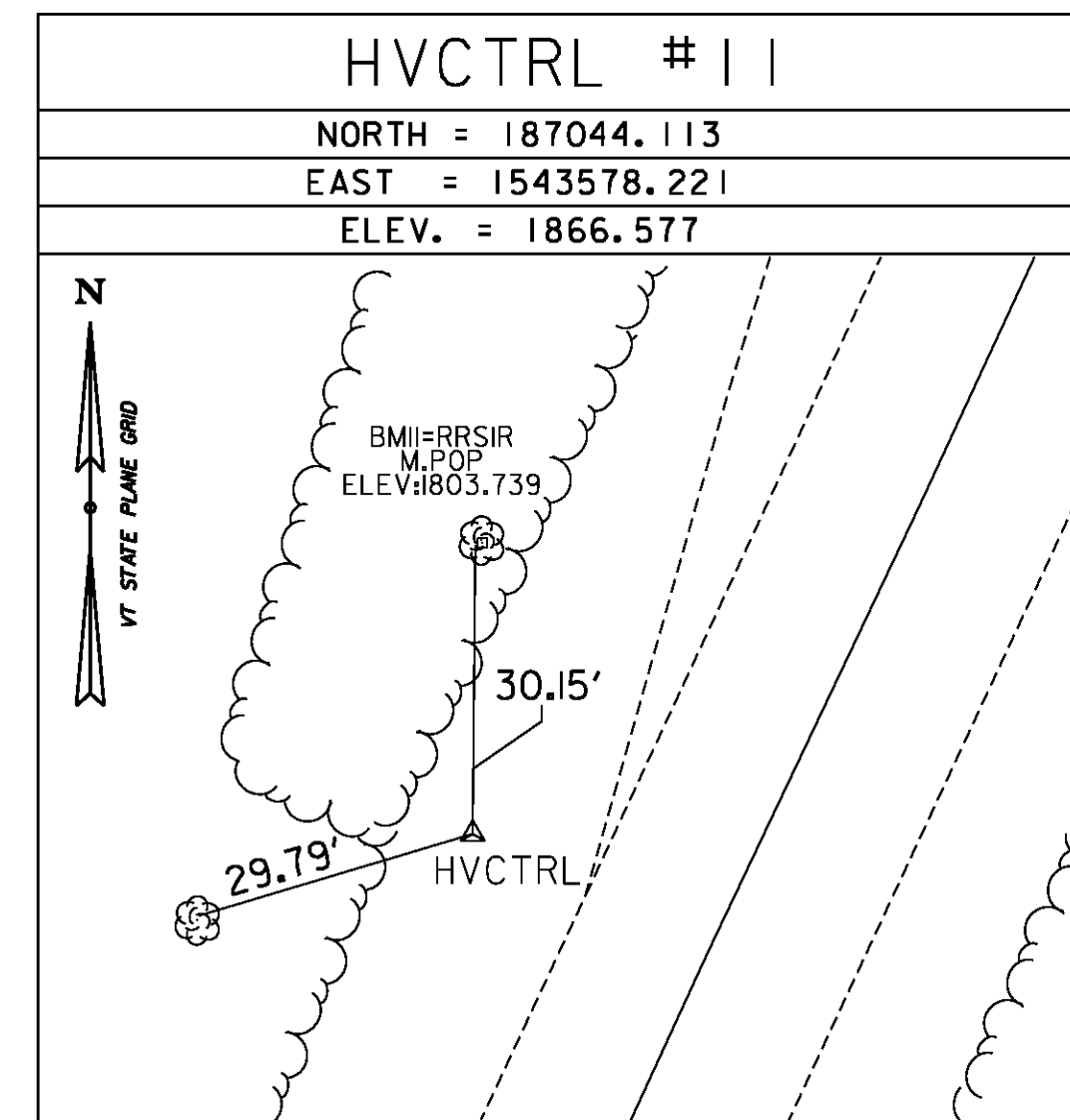
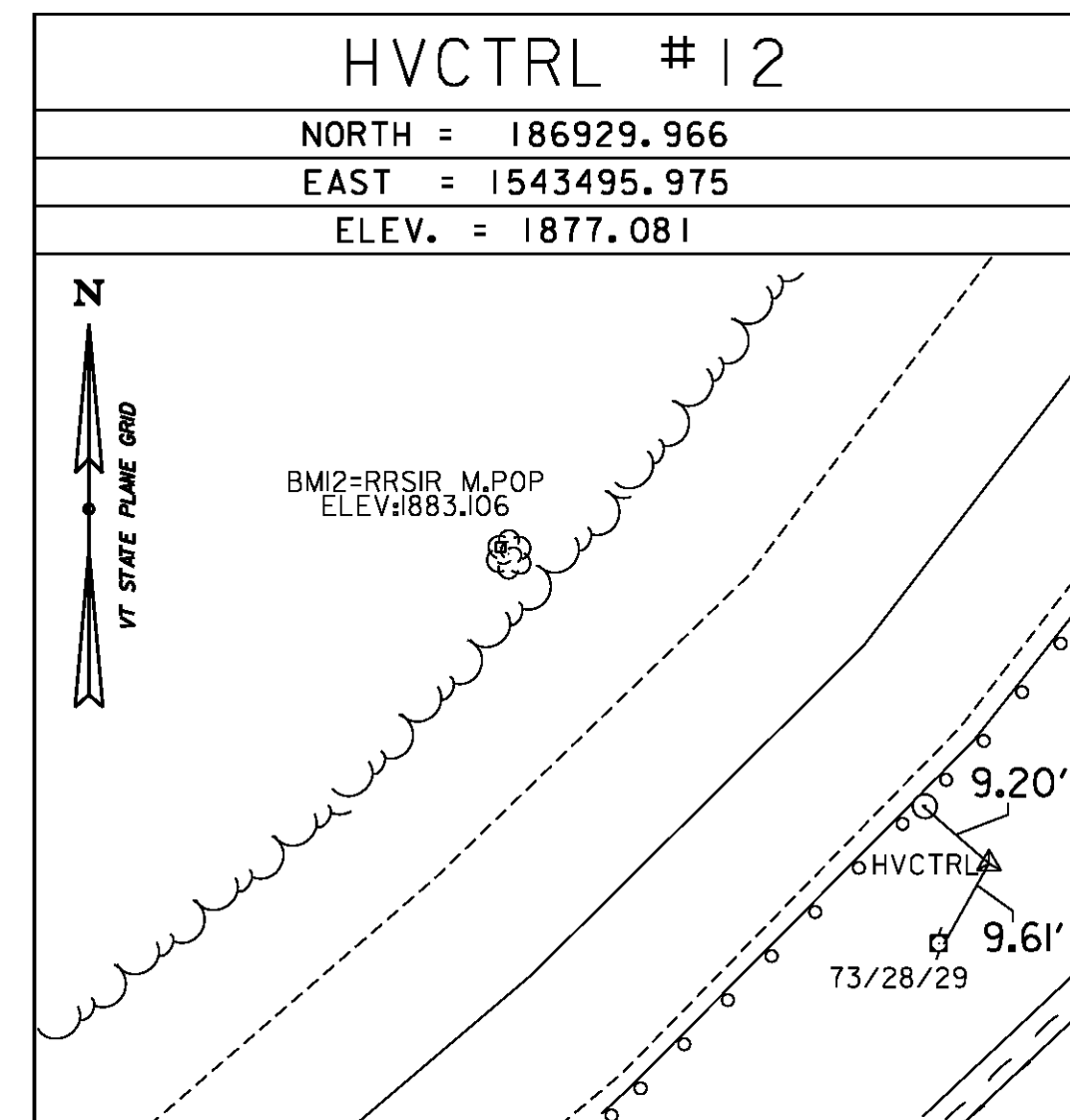
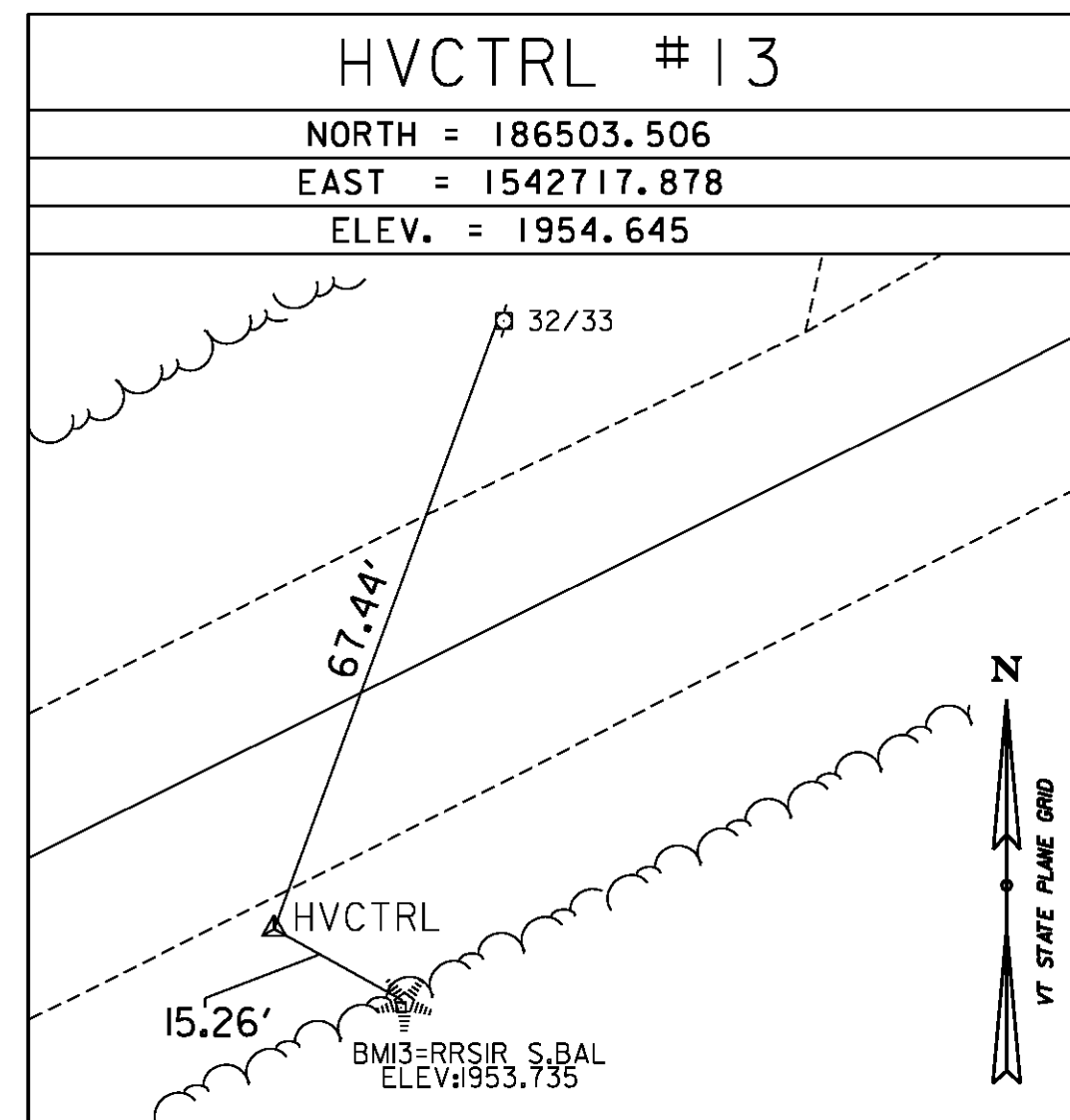
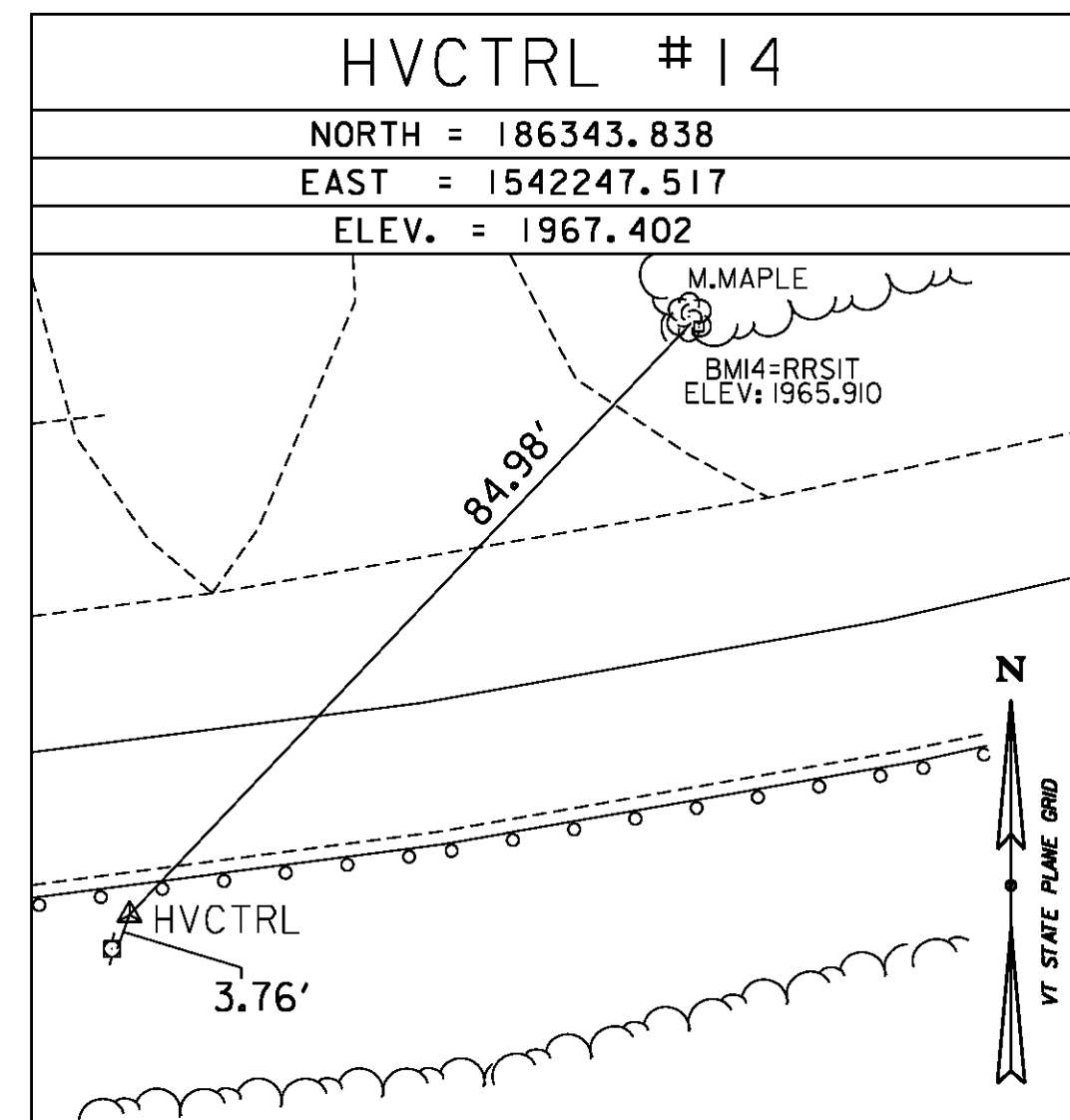
REBAR W CAP
 NORTH = 192683.283
 EAST = 1546159.991
 ELEV. = 1462.187

--- HVCTRL #37 ---

BILL TEMP I
 NORTH = 195089.425
 EAST = 1557502.028
 ELEV. = 1109.215

REBAR WITH ALUMINIUM CAP

TRAVERSE TIES



ALIGNMENT TIES

NORTH = _____
 EAST = _____
 ELEV. = _____

NORTH = _____
 EAST = _____
 ELEV. = _____

NORTH = _____
 EAST = _____
 ELEV. = _____

NORTH = _____
 EAST = _____
 ELEV. = _____

NORTH = _____
 EAST = _____
 ELEV. = _____

DATUM

VERTICAL	NAVD 88
HORIZONTAL	NAD 83 (2007)
ADJUSTMENT	COMPASS

PROJECT NAME:	WARDSBORO-JAMAICA	
PROJECT NUMBER:	ER STP 013-1(17)	
FILE NAME:	XI2B236TI.DGN	PLOT DATE: 2/26/2014
PROJECT LEADER:	K. UPMAL	DRAWN BY: S. DONOVAN
DESIGNED BY:	B. KIPP	CHECKED BY: P. BEYOR
TIE SHEET	2	SHEET 16 OF 444